

# Center for Integrated Underwater Observation Technology

## [Evolution of Studies on Underwater Technology]

Applied Sensing for Deep-sea Resources Exploration

Graduate School of Frontier Sciences, Dept. of Ocean Technology, Policy and Environment

Graduate School of Engineering, Dept. of Systems Innovation

<http://seasat.iis.u-tokyo.ac.jp/>

## Evolution of Studies on Underwater Technology

**A**ctual **B**enefit, **C**reation and **D**iscovery, **E**xploration of **F**uture

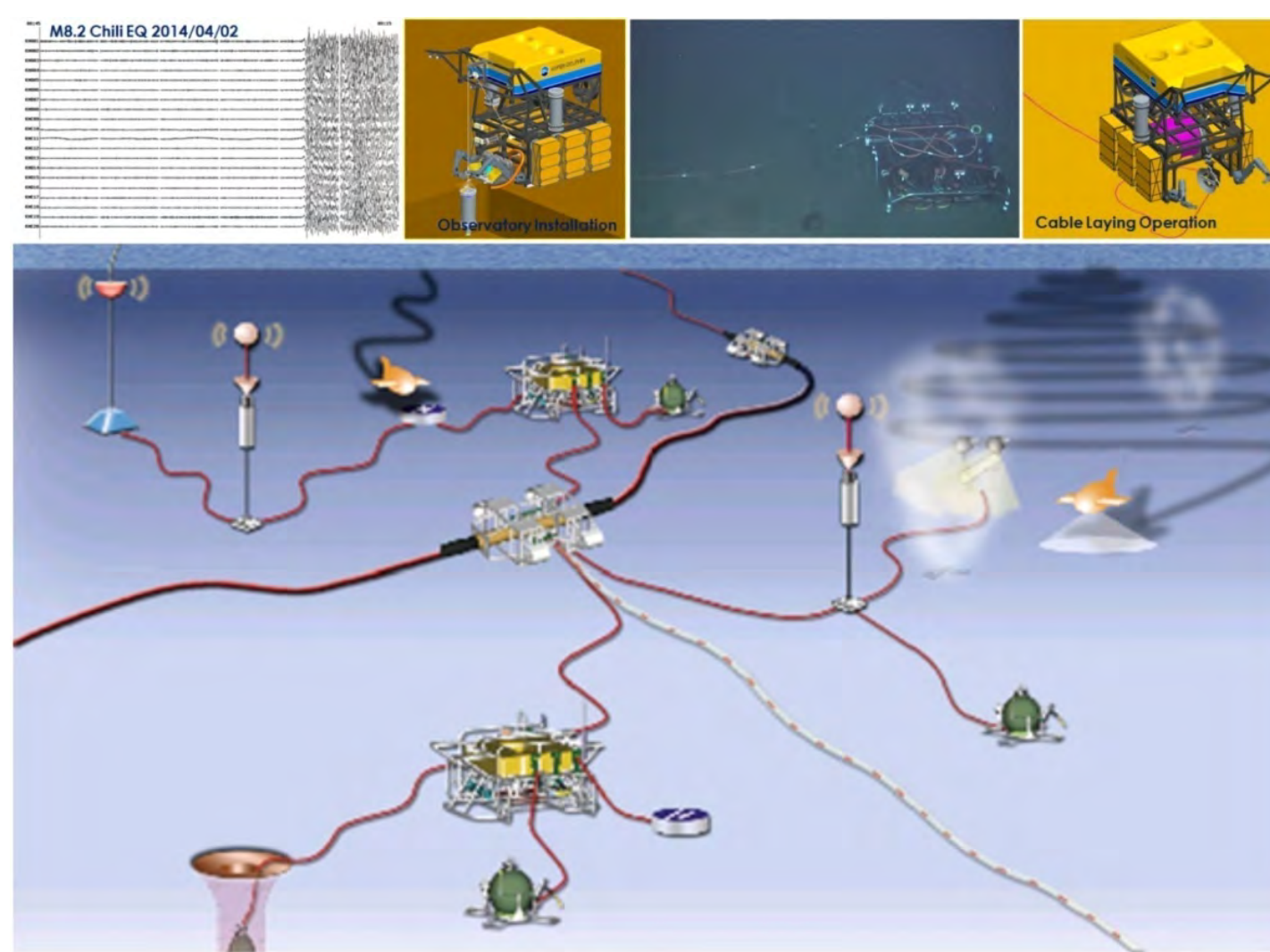
Rheem Lab.

Ocean Environmental Engineering



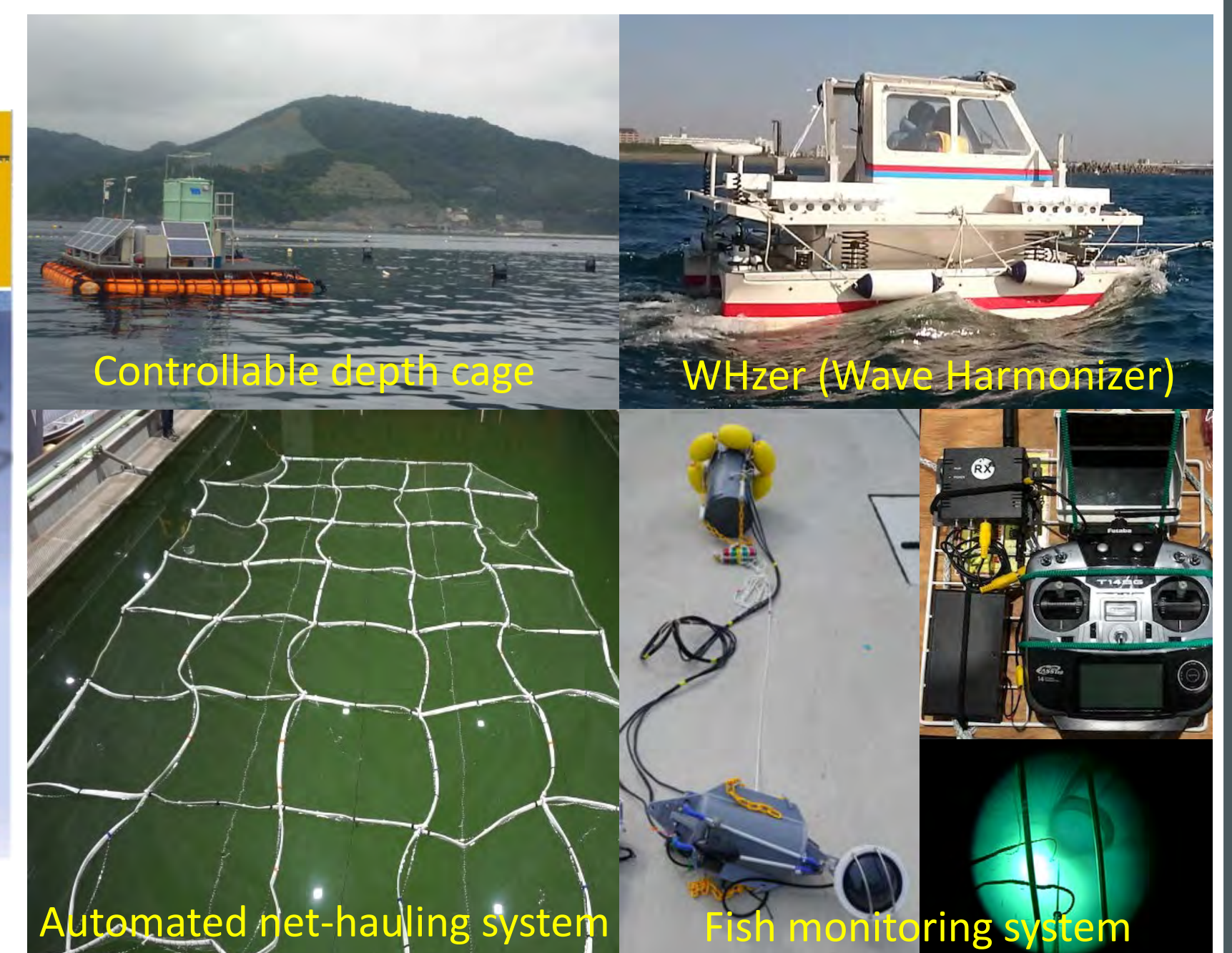
Kawaguchi Lab.

Multidisciplinary Seafloor Observatory Engineering



Kitazawa Lab.

Marine Ecosystem Engineering

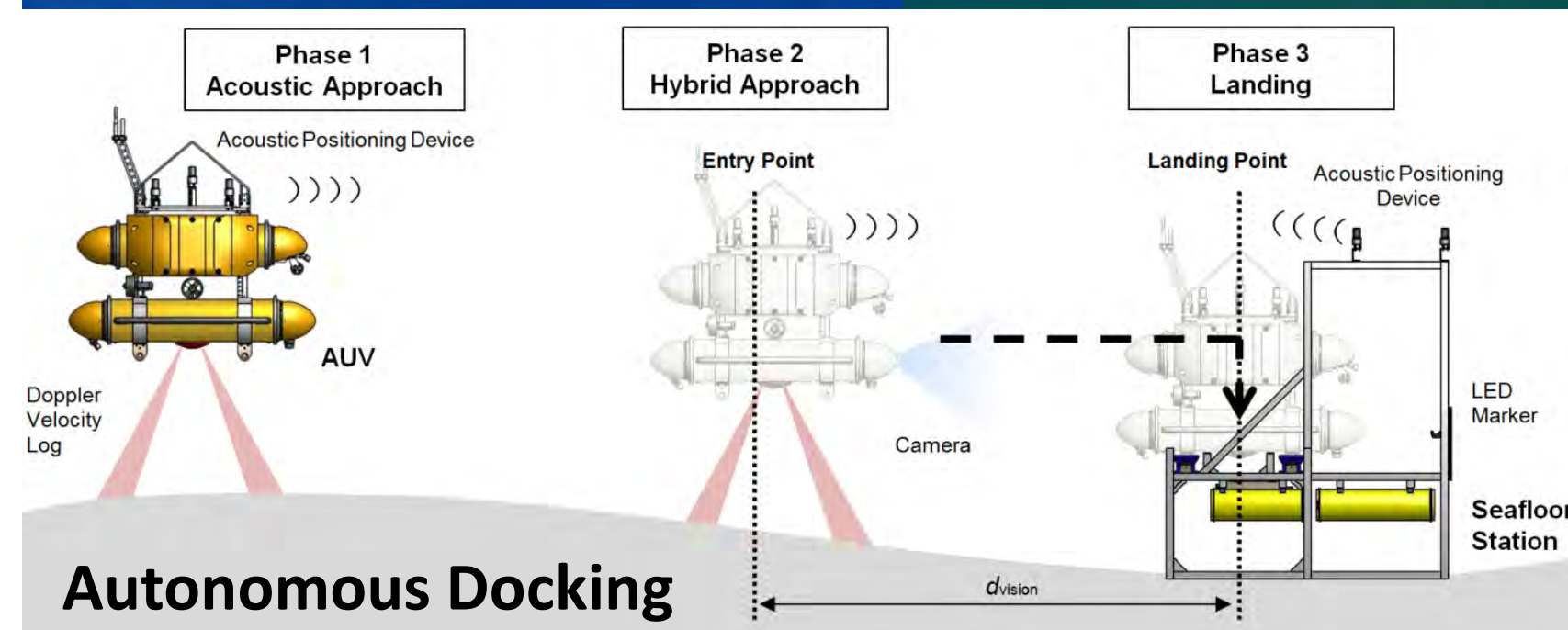


Maruyama Lab.

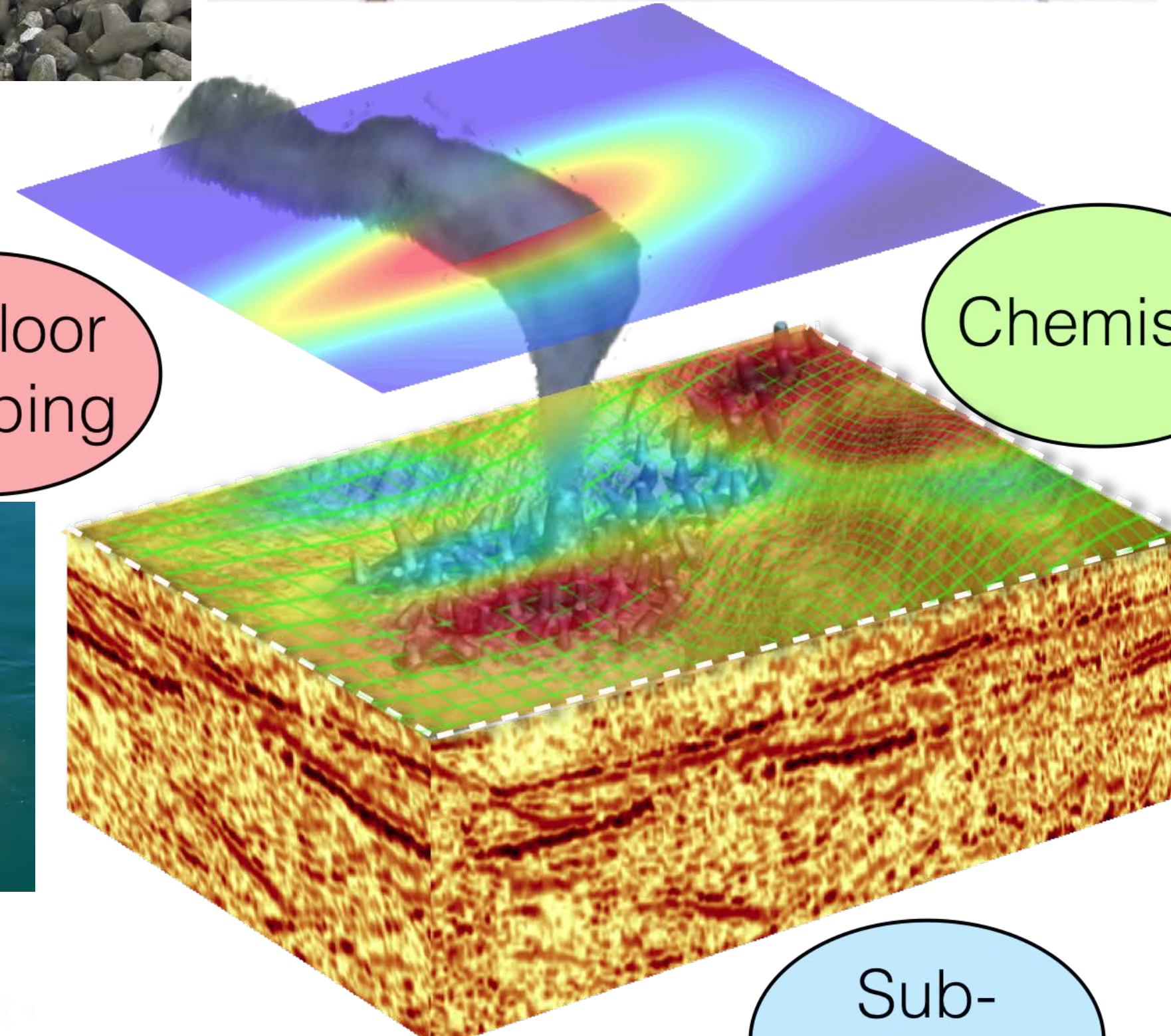
Ocean Renewable Energy

Maki Lab.

Underwater Platform Systems

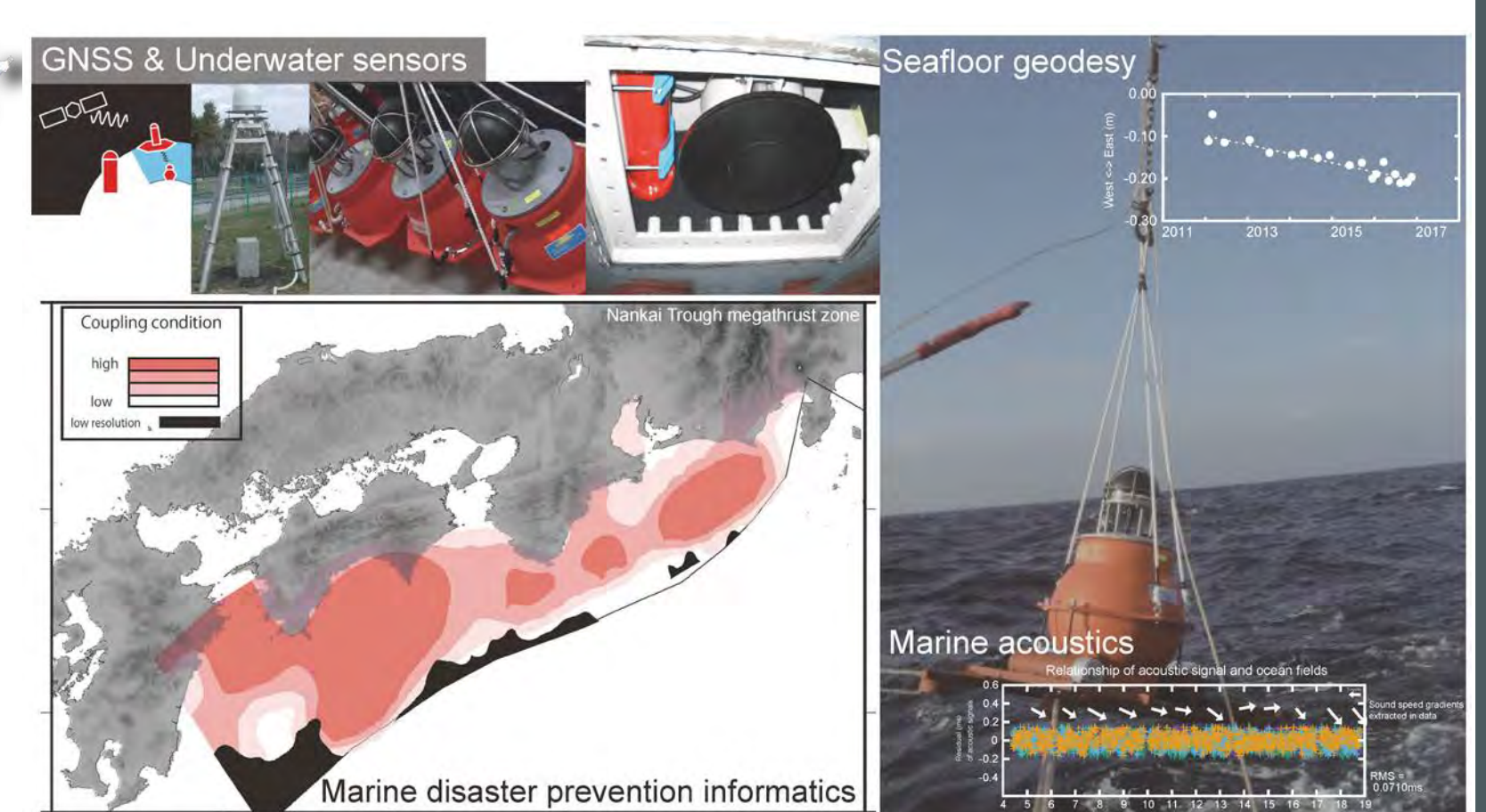


Seafloor mapping



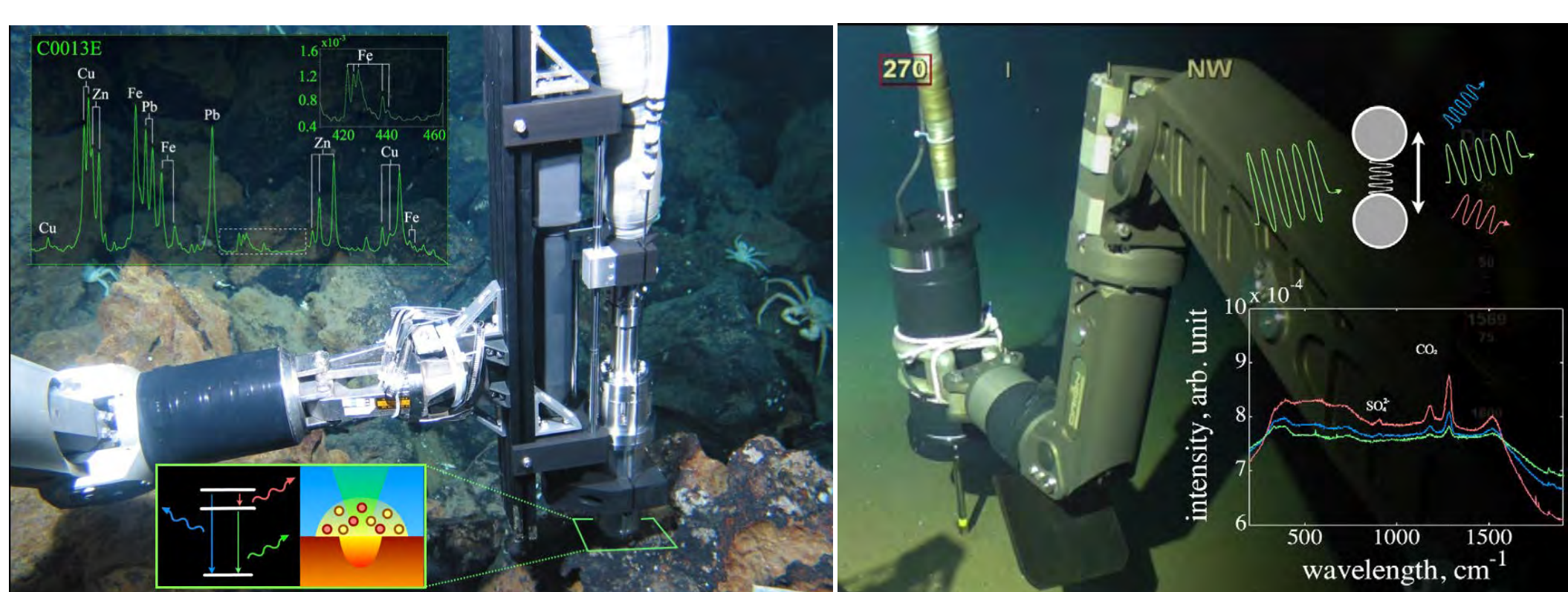
Yokota Lab.

Underwater Information System



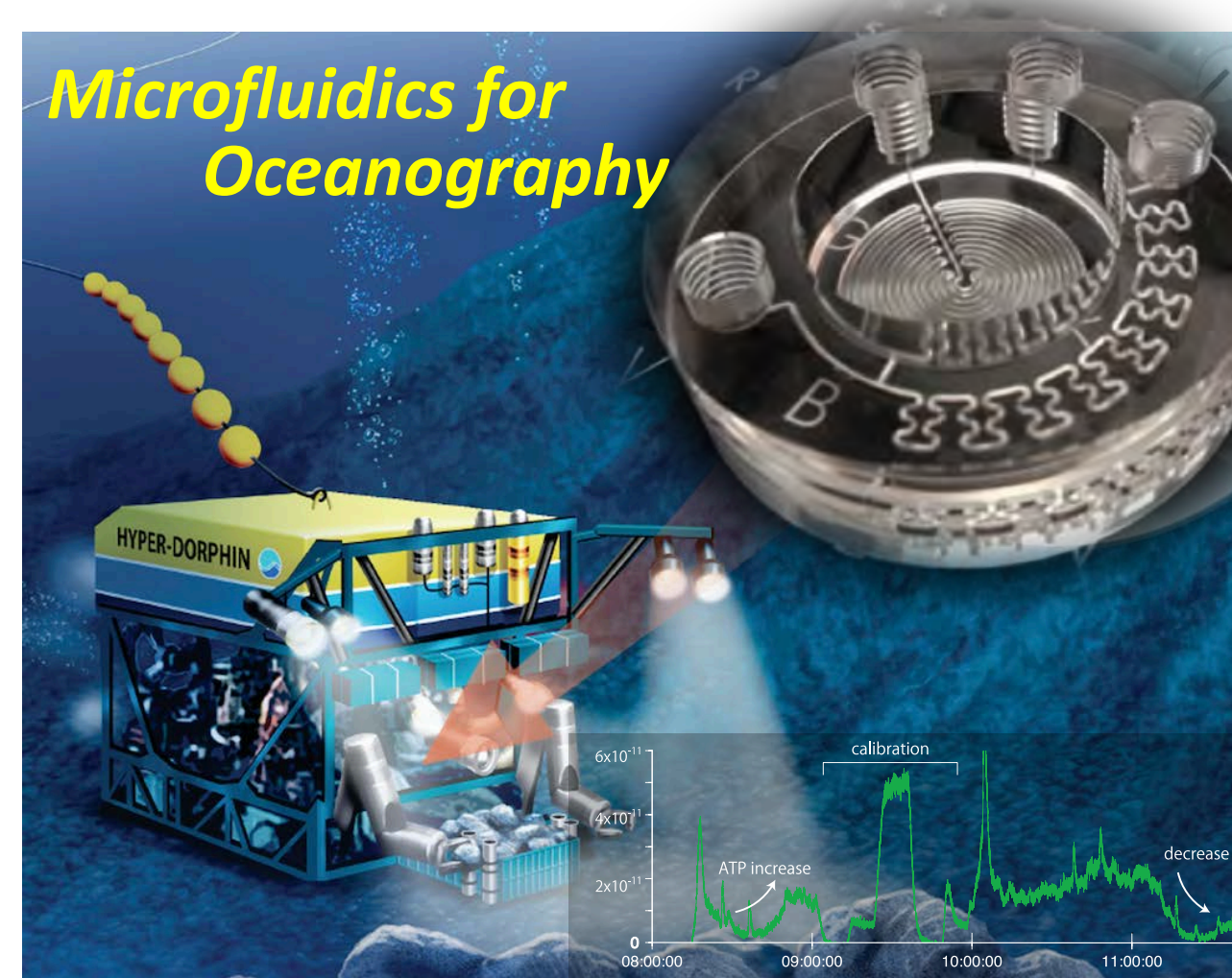
Thornton Lab.

Underwater Photonics



Fukuba Lab.

Multi-modal Ocean Sensing Systems



Hasegawa Lab.

Interfacial Transport Engineering

