



W.TAKEUCHI LAB.

[Monitoring global environment changes and International technology collaboration]

Department of Humans and Social Systems
Remote Sensing of Environment and Disaster

Department of Civil Engineering, Faculty of Engineering

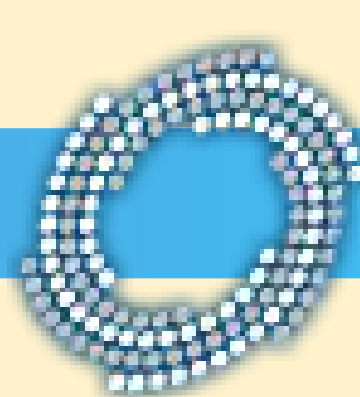
<http://wtlab.iis.u-tokyo.ac.jp/>

Mission: Developing methodologies of global-scale measurement on environmental changes in ...
 Cities
 Agricultural area
 Forested area

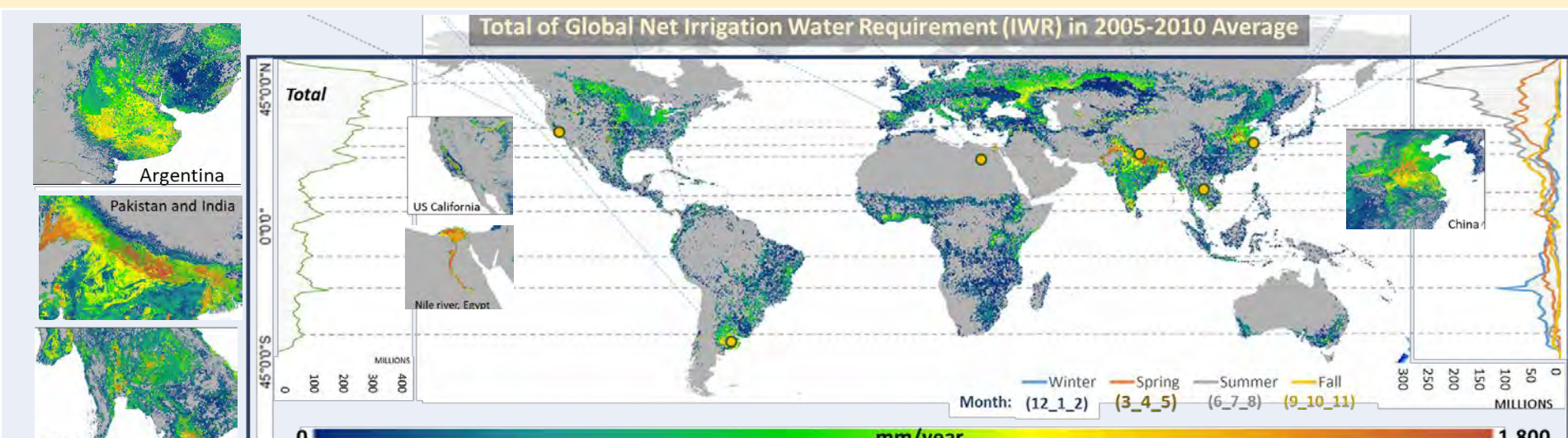
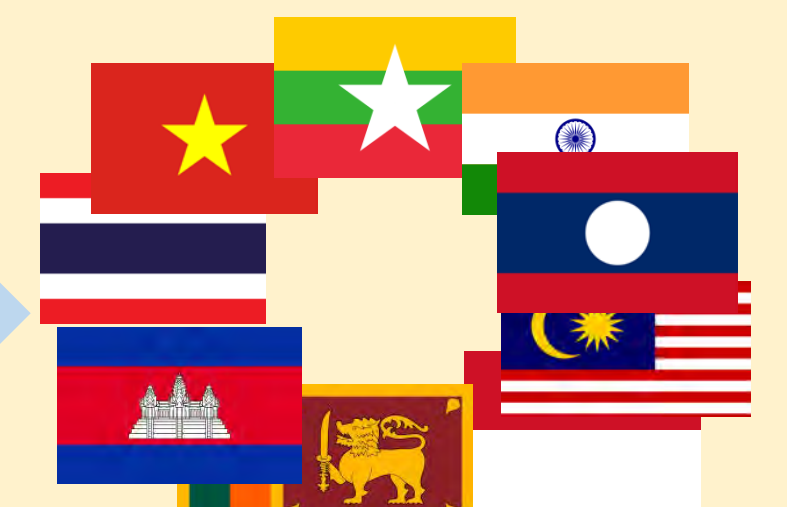
Area exposed to anthropogenic impacts



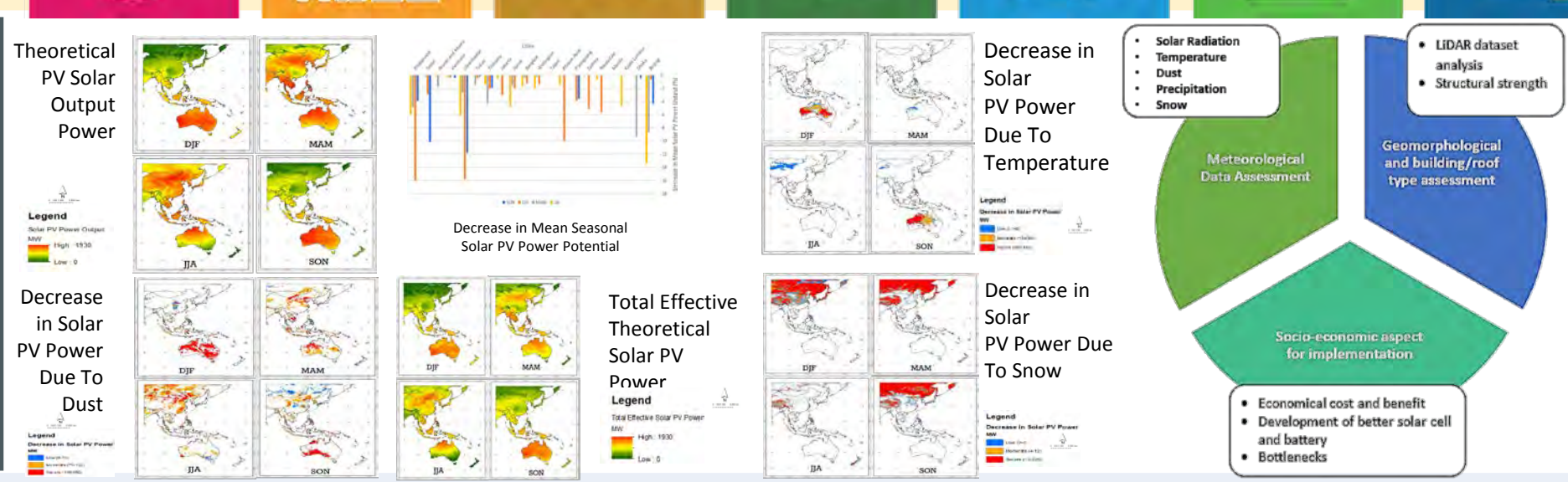
International technology collaboration with Asian countries



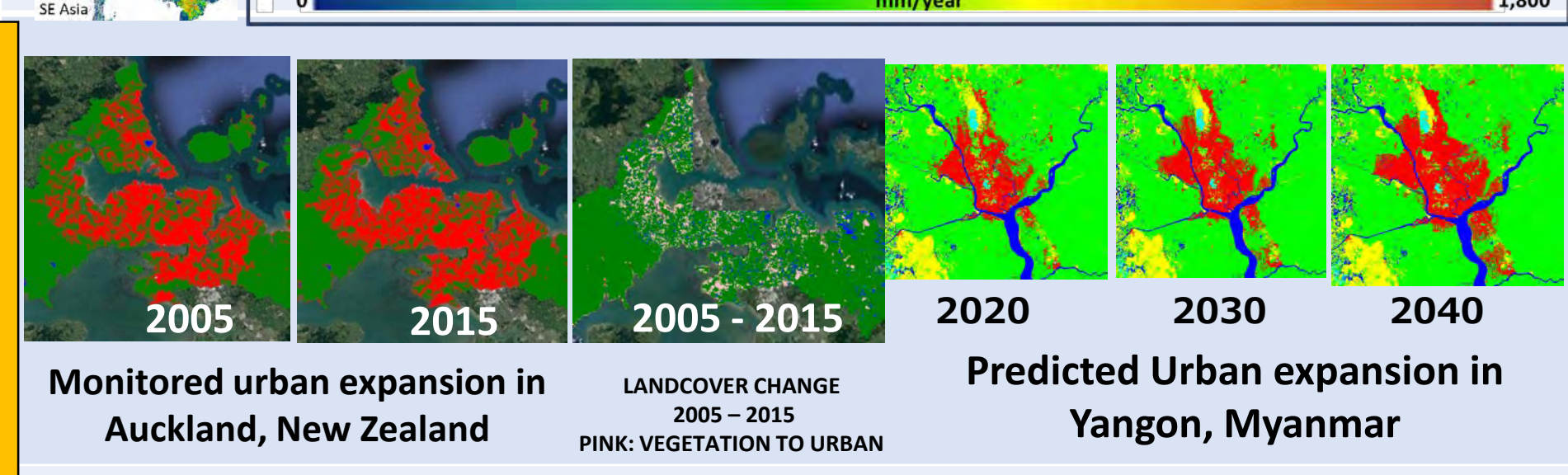
APRSAP
ASIA-PACIFIC REGIONAL SPACE AGENCY FORUM



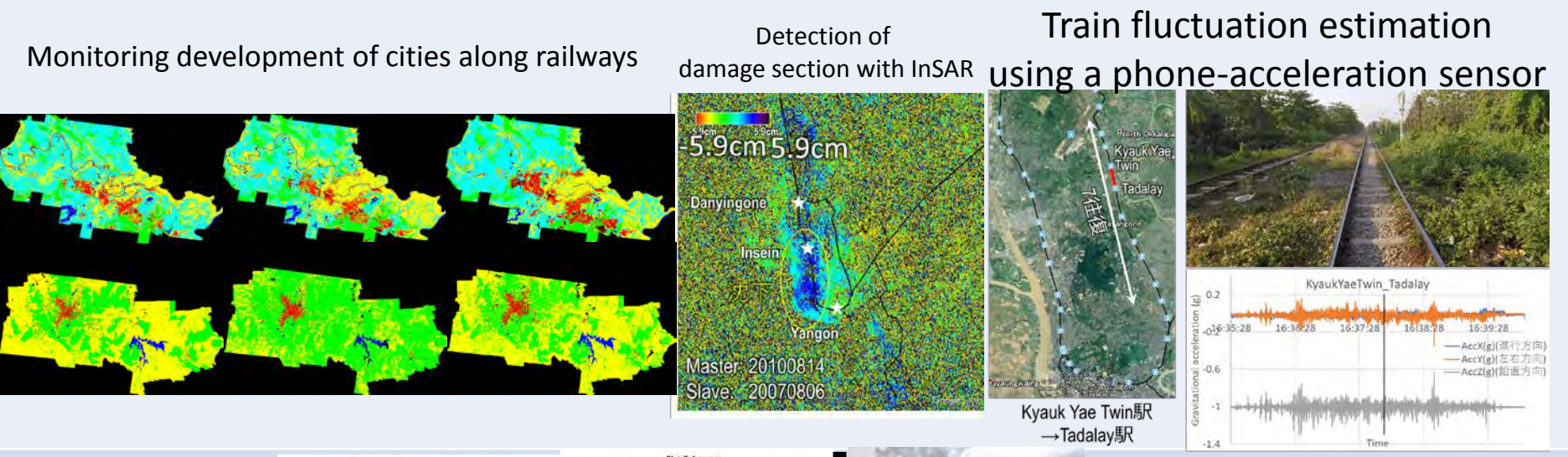
Development of Global Irrigation Water Requirement Based on Multi Remote Sensing Data Integration



ASSESSMENT OF SOLAR PV POWER POTENTIAL OVER ASIA PACIFIC REGION



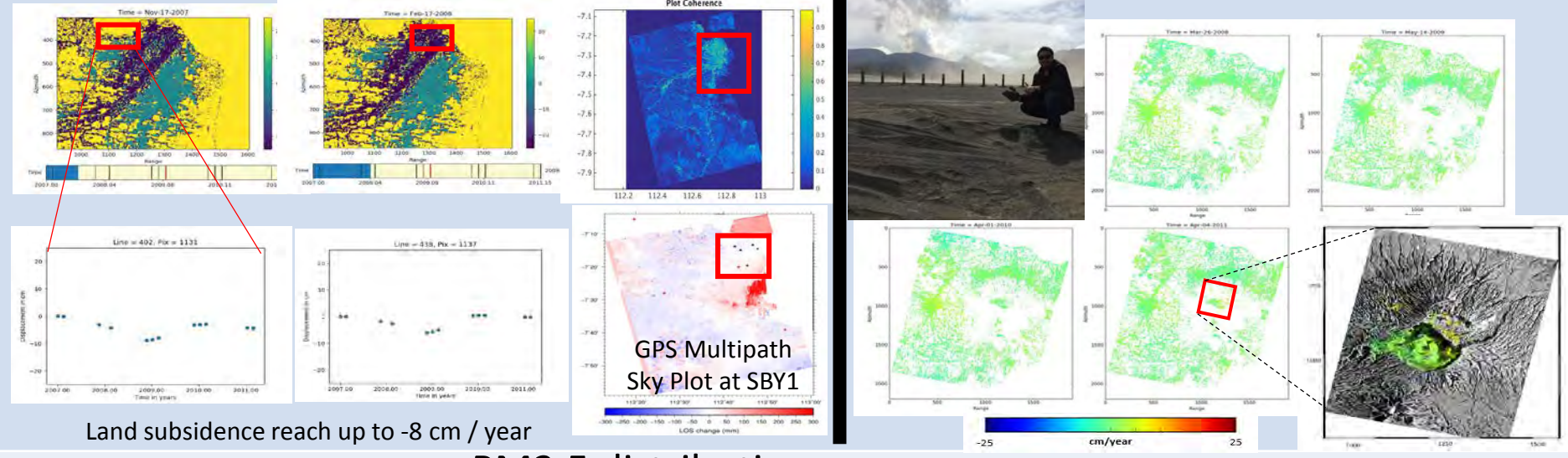
Monitoring/Modeling of urban expansion status



Health Monitoring of Civil Infrastructure & Assessment of its economic impact on urban development



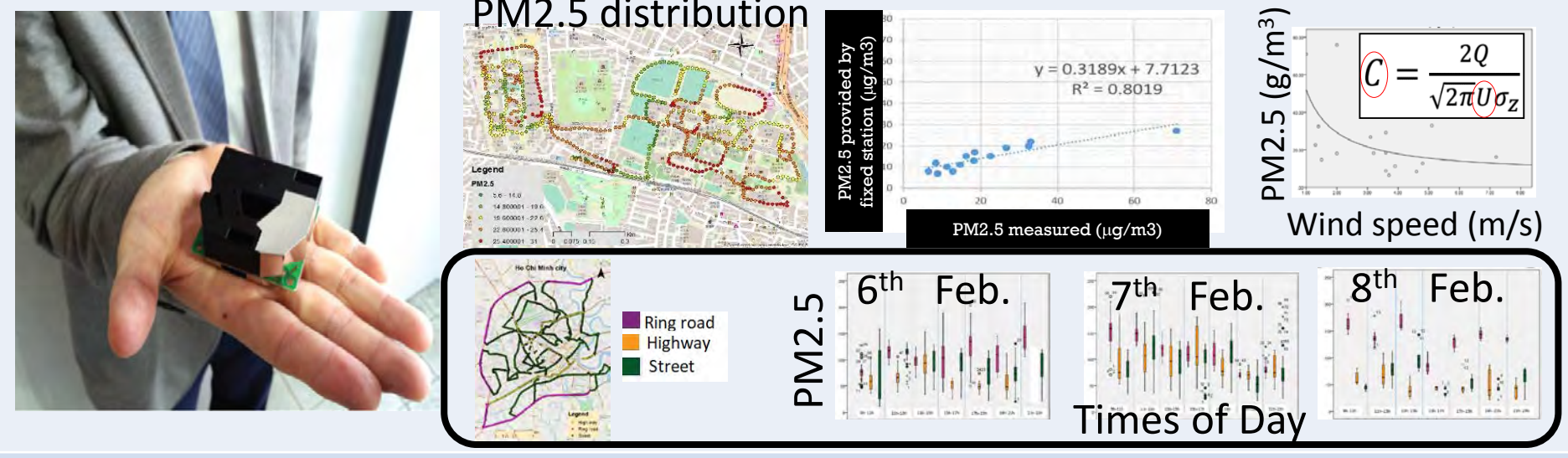
3D Reconstruction from Images and LIDAR for Infrastructure Health Monitoring



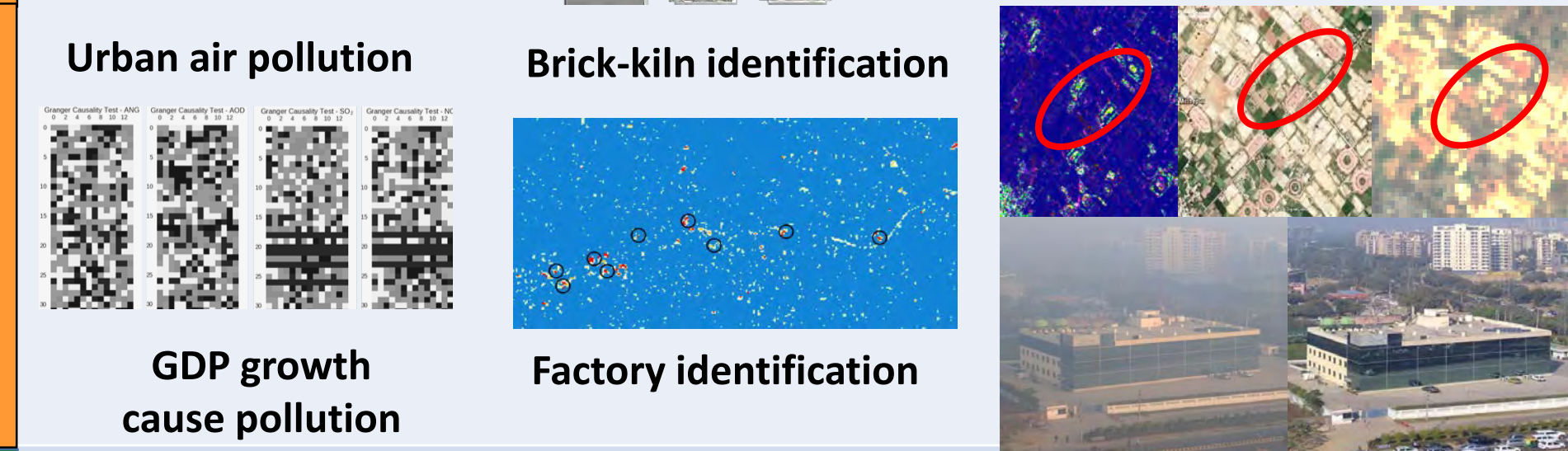
Time-Series Interferometric SAR and GPS analysis in Indonesia for Land Subsidence Detection in Surabaya & Monitoring active volcano (Mt. Bromo)



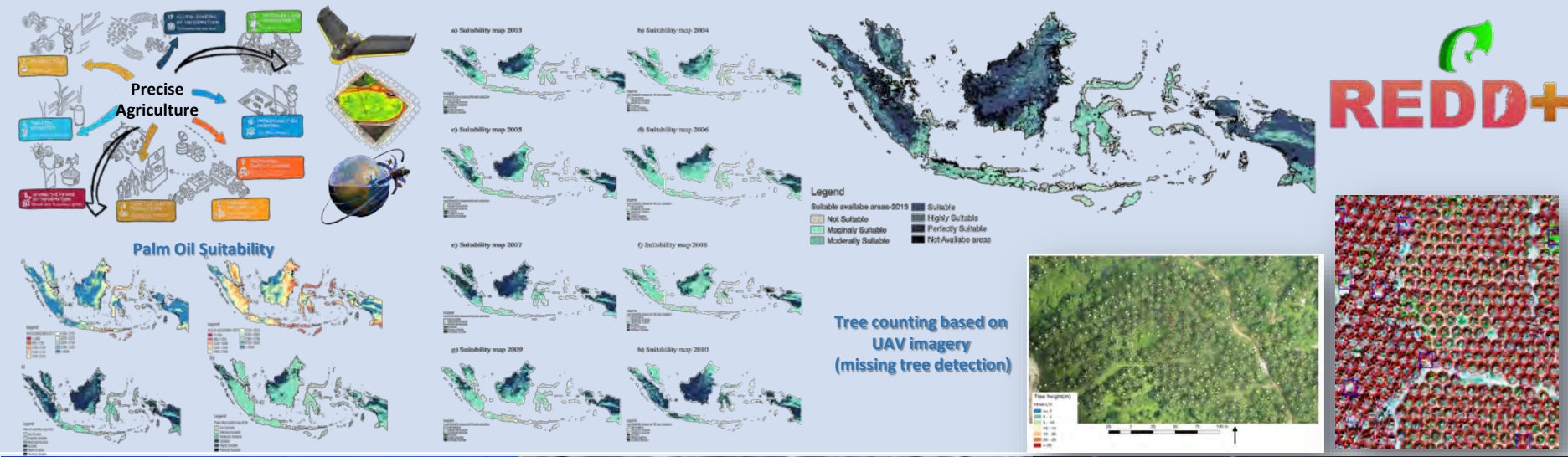
Infrared Camera System based on Open Source Hardware



Air pollution mapping and personal exposure assessment by portable devices for urban area



Impact of socio-economic development on urban air quality in India



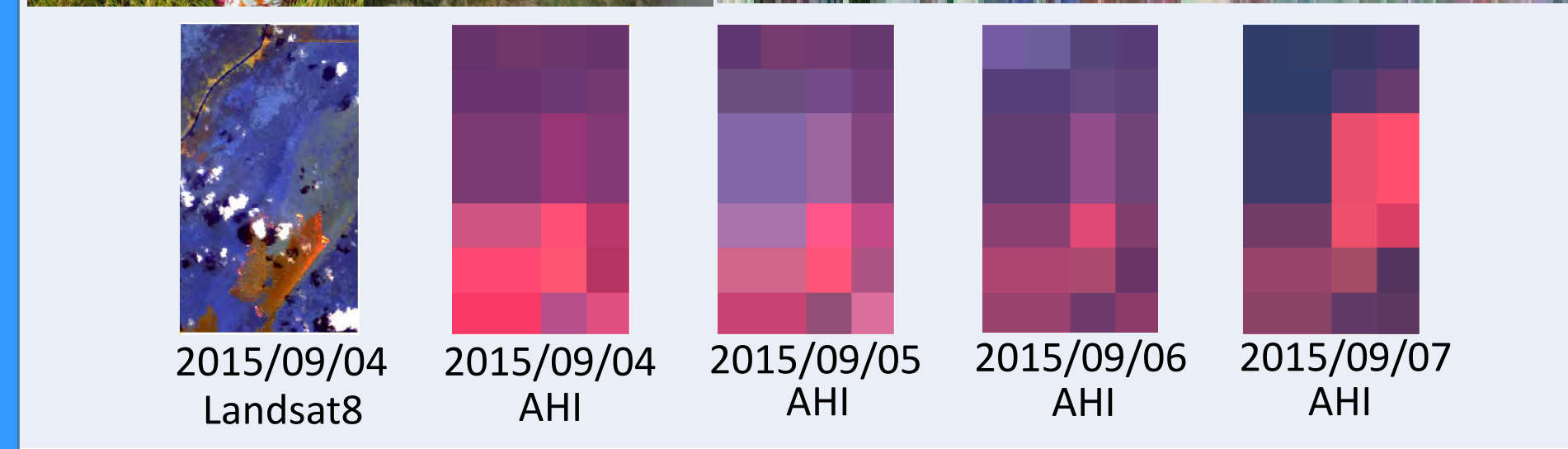
Sustainable Palm Oil management



Regional/global evaluation of GHGs emission from tropical rice paddies



Environmental Monitoring of Eastern Thailand Sea



Detection of forest fire by Himawari-8 imager with high temporal resolution

