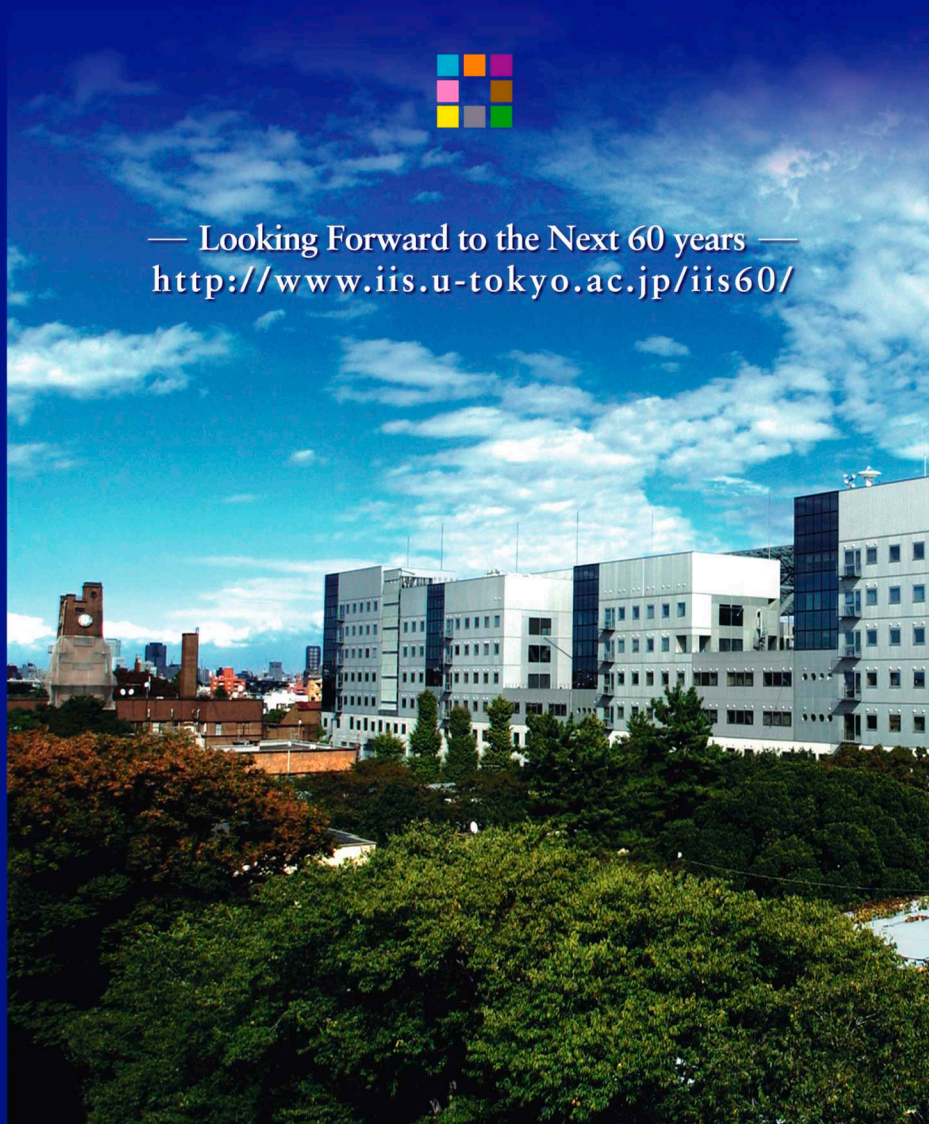


**Projects Commemorating  
the 60th Anniversary of  
The Institute of Industrial Science  
The University of Tokyo**

# SEIKEN 60



— Looking Forward to the Next 60 years —  
<http://www.iis.u-tokyo.ac.jp/iis60/>



**Institute of Industrial Science, the University of Tokyo**

## **Request for Donations for Projects Commemorating the 60th Anniversary The Institute of Industrial Science, The University of Tokyo**

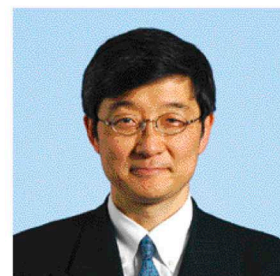
The Institute of Industrial Science (IIS) of the University of Tokyo was established on 31 May, 1949. It is the successor to the Second Faculty of Engineering, which was founded in 1942. In 2009, IIS celebrated its 60th anniversary.

In 1962, the campus of IIS was relocated from Yayoi-cho, Chiba City to Azabu Ryudo-cho, and in 2001 it moved again to the present Komaba Research Campus. Today, IIS is undergoing a major organizational transformation following the conversion of national universities into independent corporate entities in 2004.

IIS is Japan's largest research institute attached to a university, and is renowned worldwide as a research hub that is active at the frontiers of engineering research. Our founding vision has been to establish systems that allow fundamental research to evolve into the development of innovative new technologies, and power a technology-driven nation. Based on this vision, we continue to undertake world-leading research and develop human resources of outstanding ability. This is the result of the commitment and support provided by the leadership and faculty members of IIS.

We are now proposing a number of exciting new projects to commemorate our 60th anniversary, which will lay the foundations for the next stage in the evolution of IIS. Delivering these projects is a challenging task—in particular, raising the necessary funds.

A donation from you will not only support cutting-edge research by leading academics in their fields, but also contribute to the future welfare of people and communities around the world.



**Professor Tomonari Yashiro**  
Director General  
Institute of Industrial Science  
University of Tokyo



## **Future Goals of IIS**

At IIS, we are proud to be part of Japan's largest research institute attached to a university. Our activities encompass a broad spectrum of engineering studies ranging from global to quantum, from living to artificial systems, and from natural to built environment.

Since our establishment, IIS has maintained a clear vision of cross-cultural integration and industry-university collaboration, and promoted research whose results can be shared with communities and have practical applications. This approach has now been adopted by many other universities and research institutes.

We will continue to maintain and further develop this vision, while finding solutions to problems that affect the global community today in areas such as the environment, energy, and healthcare. We will also focus on developing the industrial infrastructure and manufacturing technologies that will bring those solutions within reach. To this end, IIS will undertake internationally competitive research through activities that are innovative, yet universal and sustainable, and develop the necessary human resources.



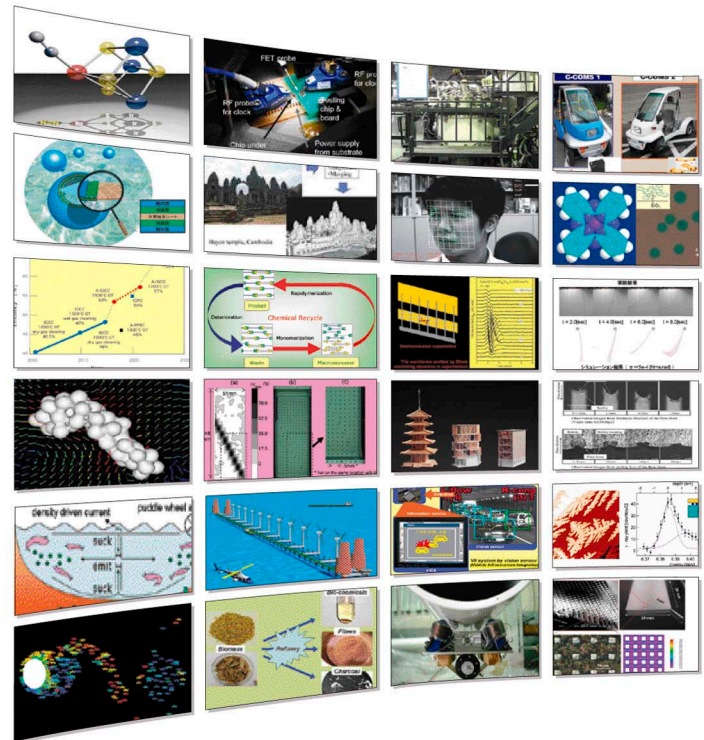


# 60th Anniversary Co

## Industry-University Research Collaboration Support System

The results of engineering research build upon each other and permeate every aspect of our lives. To promote research and development, we need human, material, and financial resources, which we must manage flexibly to extract the maximum benefits and synergies.

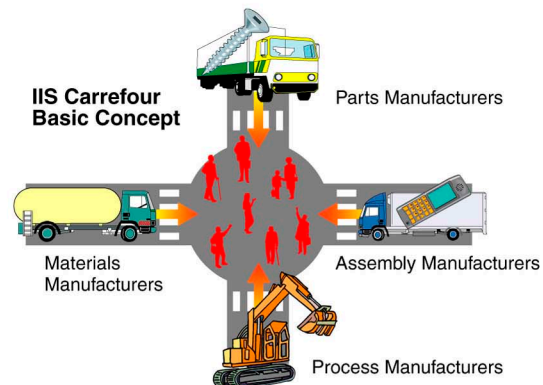
IIS is expanding its industry-university research collaboration support system in cooperation with a wide range of companies and organizations to secure these vital human, laboratory, and financial resources.



## IIS Carrefour (Matchmaking Support for Companies)

When developing new technologies, development and integration of existing technologies provide one way toward achieving the breakthroughs that lead to the creation of new industries. IIS works with technology companies—both large and small—and offers a platform we call Carrefour, which consists of cross-disciplinary research and development teams including our own teaching staff. Through this new project, we are committed to strengthening the functions of IIS Carrefour and promoting the creation of new industries.

※ Carrefour is a French word meaning crossroads or open square. It also refers to a venue where people gather for discussions.



## IIS Friendship Society

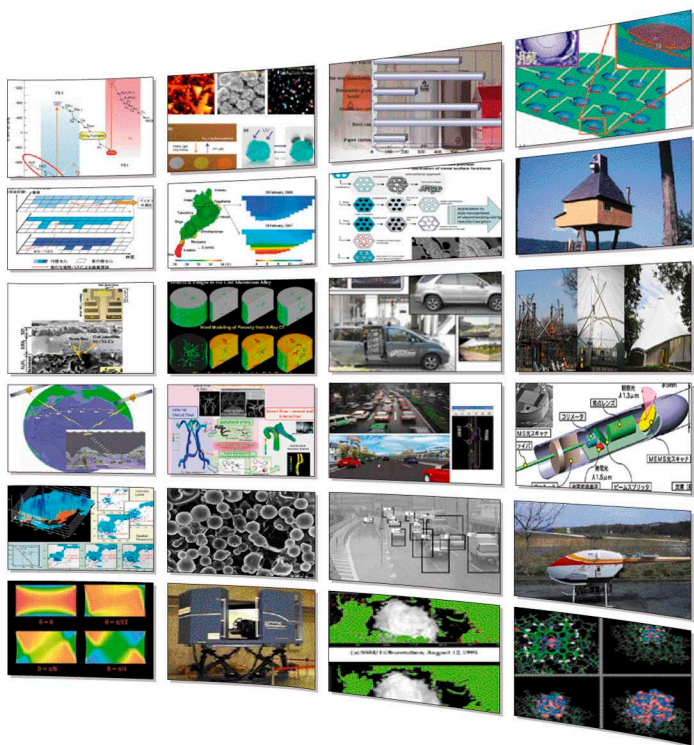
The IIS Friendship Society is being established with members who support the vision and goals of our activities. The Society will be an important forum for promoting dialogues with a broad spectrum of high-technology industries.



## IIS Special Scholarship

The IIS Special Scholarship is being set up and offered to several PhD students every year to help develop and train talented researchers.

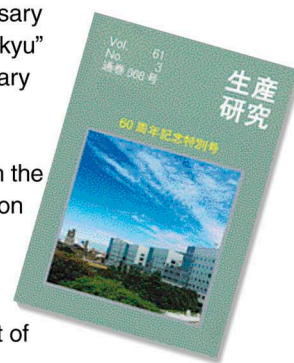
# Commemorative Projects



## Publication of “Seiken Kenkyu” Special Edition

IIS published the 40th Anniversary Special Edition of “Seiken Kenkyu” in 1989 and the 50th Anniversary Special Edition in 1999.

To commemorate our 60th anniversary, we plan to publish the 60th Anniversary Special Edition of “Seiken Kenkyu” with the support and cooperation of academic colleagues and alumni who are at the forefront of their fields.



## Historical Materials Archives of the Second Faculty of Engineering and IIS

The research activities of IIS and its predecessor, the Second Faculty of Engineering, have delivered results that have led directly to many engineering technology innovations in Japan, while the researchers themselves have gone on to take up leadership roles in academia and industry. The historical materials archives project will collect and collate materials detailing those research and education activities, research results, and subsequent contributions to society. An exhibition space will allow public access and showcase the innovations that have made Japan the technological powerhouse it is today. The archives will be the foundations for the evolution of innovative engineering research, inherited from the Second Faculty of Engineering, for many years to come.

## The 60th Anniversary Commemorative Hall (tentative name)

Building Number 60 at the Komaba Research Campus will be renovated and become the 60th Anniversary Commemorative Hall (tentative name). The main purposes of the Hall are as follows:

- To enhance research spaces for active cross-culture integration and industry-university joint research
- To provide a home for our archives and an 3D virtual reality theater for presenting advanced technologies developed in the past and those under development at present
- To organize and store research and development records dating back to the Second Faculty of Engineering, and exhibit them to the public
- To set up a communication space for alumni of IIS and the Second Faculty of Engineering, members of IIS Alumni Association and IIS Friendship Society and researchers and engineers who gather at IIS



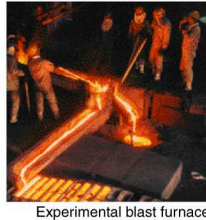
## The 60th Anniversary Commemorative Project Fundraising

We are currently staging a fundraising campaign (target of one billion yen) to accomplish the various projects that commemorate our 60th anniversary. We would greatly appreciate your help in reaching this target and supporting the work of IIS.



# History of IIS

- 1877 The University of Tokyo founded.
- 1886 Engineering College established.
- 1942 Second Faculty of Engineering founded in Yayoi-cho, Chiba City. It produced a stream of capable scholars until 1951 when it merged with IIS.
- 1949 Institute of Industrial Science established. (31 May, 1949)
- 1954 First IIS Open Day. Experimental blast furnace for iron production research started operation.
- 1955 Research and development of observation rockets started.
- 1962 IIS transferred to Azabu.
- 1965 Earthquake resistance engineering departments established.
- 1973 Center for Development of Instrumentation Technology established.
- 1975 Composite Materials Research and Development Center established.
- 1977 Research Center for Multidimensional Image Processing established.
- 1984 Research Center for Function-oriented Electronics established.
- 1985 Research Center for the Development of Advanced Materials established.
- 1990 Information Fusion (RICOH) established as Endowed Chair.
- 1991 Intelligent Mechatronics (TOSHIBA) established as Endowed Chair. The Globe Engineering (TOYOTA) established as Endowed Chair. The International Center for Disaster-mitigation Engineering established.
- 1994 Center for Conceptual Processing of Multimedia Information established.
- 1995 Research Center for Soft Material Engineering established.
- 1997 Joint ground-breaking ceremony for IIS and Research Center for Advanced Science & Technology (RCAST) held at the Komaba II Campus.
- 1998 First phase of transfer to the Komaba II Campus began.
- 1999 Underwater Technology Research Center established. Lecture, ceremony, and celebration commemorating the 50th Anniversary of IIS held.

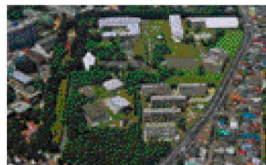


Experimental blast furnace



Observation rockets

- 2000 Center for International Research on Micro-Mechatronics established. Three Research Departments and Strategic Research Center set up as a new research structure.
- 2001 Endowed Chair of Complex Precision Machining System established. International Center for Urban Safety Engineering established. Transfer to the Komaba II Campus completed, and completion ceremony for new Research Building held.
- 2002 Ebara-Donated Research Unit of Biomass Refinery (Ebara Corporation) established. Collaborative Research Center for Frontier Simulation Software established. Nanoelectronics Collaborative Research Center established.
- 2003 Donated Chair for Advanced Display Technology (Advanced PDP Development Center Corporation) established.
- 2004 The University of Tokyo incorporated and transformed into National University Corporation. Five Research Departments established as a new research structure. International Research Center for Sustainable Materials established.
- 2005 Collaborative Research Center for Advanced Mobility (ITS Center) established. Construction of the General Research Experiment Building (Block An) completed.
- 2006 Nikon Chair of Optical Engineering established. Traffic Signal System for ITS experiment set up at Chiba Experiment Station
- 2007 Endowed Chair of Color Science (Sony Corporation) established. Experimental Railway Track built at Chiba Experiment Station.
- 2008 Center for Research on Innovative Simulation Software established. Collaborative Research Center for Energy Engineering established. Collaborative Research Center for Bio Nano Hybrid Process established. Donated Chair for Advanced Energy Conversion Engineering established.
- 2009 Underwater Technology International Research Center established. Advanced Mobility Research Center established. Donated Chair for Mobility and Field Science (TAKARA TOMY) established. Lecture, ceremony and celebration commemorating the 60th Anniversary of IIS held.



Chiba Experiment Station  
(formerly Second Faculty of Engineering)



Site of former Roppongi building



Site of Komaba main building

**Please contact the Secretariat below for more information on making a donation to IIS.**

## The University of Tokyo Foundation Secretariat

7-3-1 Hongo, Bunkyo-ku, Tokyo 113-8654 Tel: 03-5841-1217 Fax: 03-5841-1219  
E-mail: [kikin@adm.u-tokyo.ac.jp](mailto:kikin@adm.u-tokyo.ac.jp)

The University of Tokyo Foundation Homepage  
You can send donations through this homepage

<http://utf.u-tokyo.ac.jp>

## Information on IIS 60th Anniversary Commemorative Projects is available from

### General Affairs Section The Institute of Industrial Science, The University of Tokyo

4-6-1 Komaba, Meguro-ku, Tokyo 153-8505  
[http:// www.iis.u-tokyo.ac.jp/iis60/](http://www.iis.u-tokyo.ac.jp/iis60/)  
Tel: 03-5452-6004, 6009  
Fax: 03-5452-6872  
E-mail: [iis60@iis.u-tokyo.ac.jp](mailto:iis60@iis.u-tokyo.ac.jp)

## IIS Alumni Association

The IIS Alumni Association was inaugurated in 2004. Its Thai and South Korean Branches were established in 2007. Former teaching and administration staff, students, and researchers of the Second Faculty of Engineering, a branch of the Engineering College and IIS (and who are current members) are eligible to join the IIS Alumni Association by registering. Please visit the IIS Alumni homepage for further information.

<http://www.iis.u-tokyo.ac.jp/alumni/>  
Tel: 03-5452-6017 Fax: 03-5452-6071  
E-mail: [reunion@iis.u-tokyo.ac.jp](mailto:reunion@iis.u-tokyo.ac.jp)



**Institute of Industrial Science, the University of Tokyo**