

# KAMIJO LAB.

## Enhanced Mobility and Location Service

Department of Informatics and Electronics



Applied Multimedia Information Processing

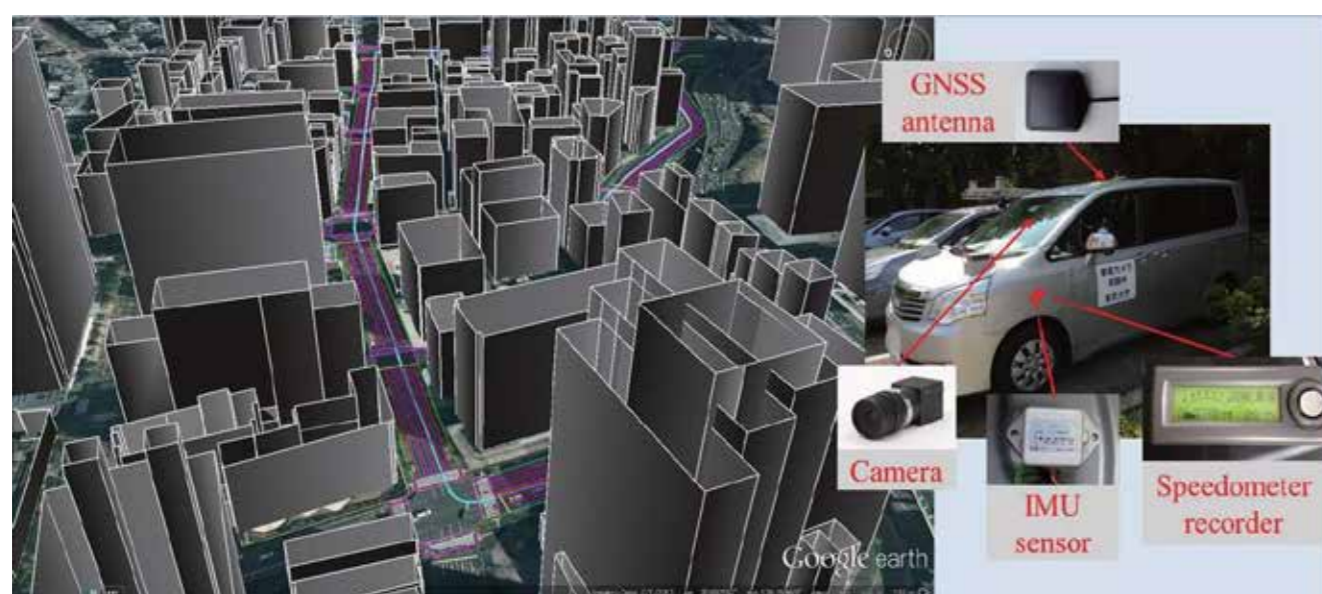
Emerging Design and Informatics Course, GSII

Department of Information and Communication Engineering, GSIST

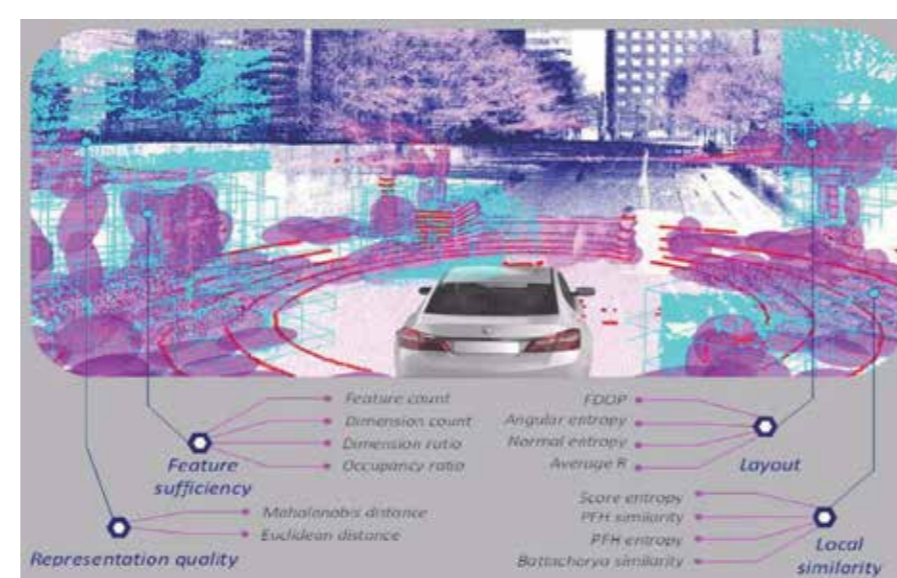
<http://kmj.iis.u-tokyo.ac.jp/>

## Autonomous Driving

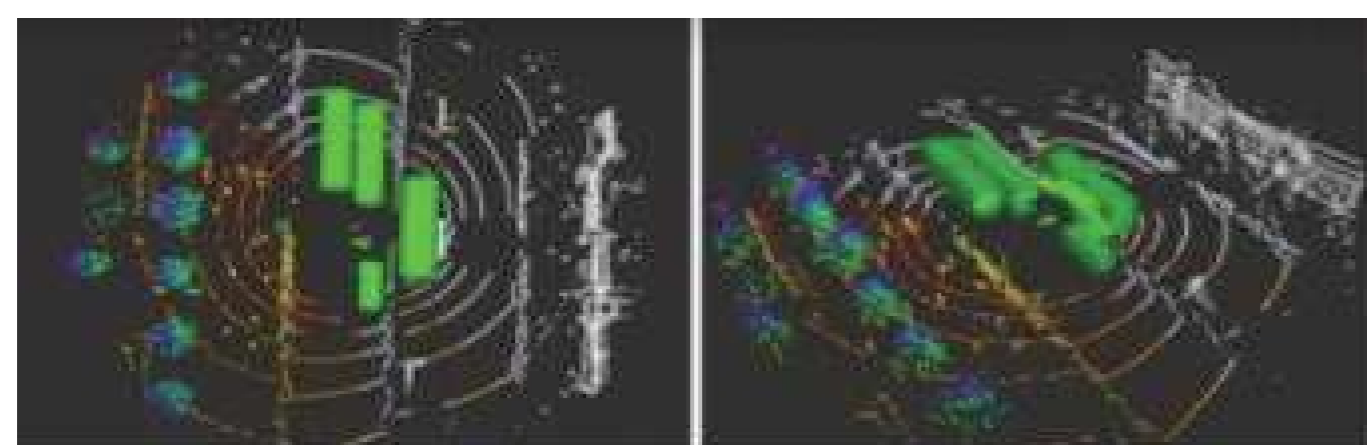
### Maps & Self-Localization in Urban Area



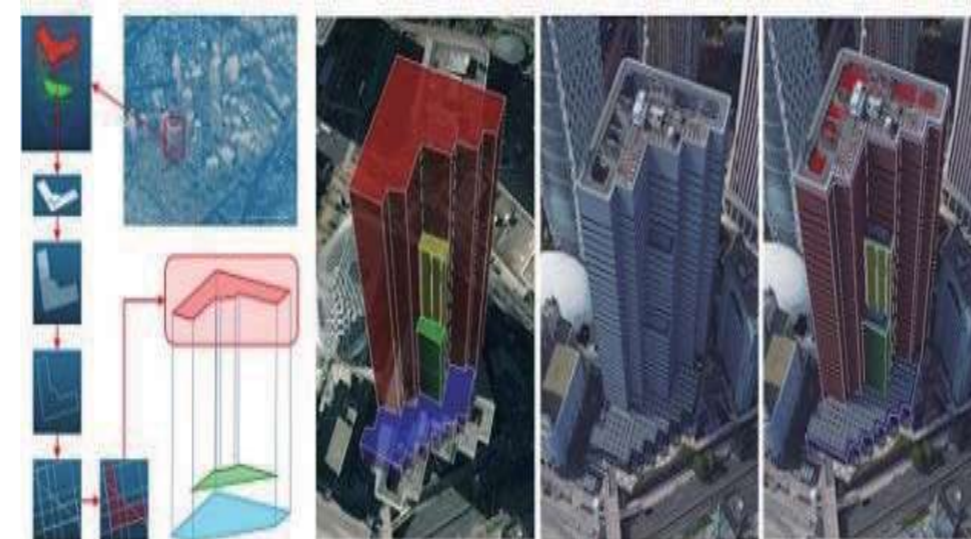
Self-Localization with Sensor Integration



Map Evaluation for Self-Localization



Occlusion Effects for Self-Localization

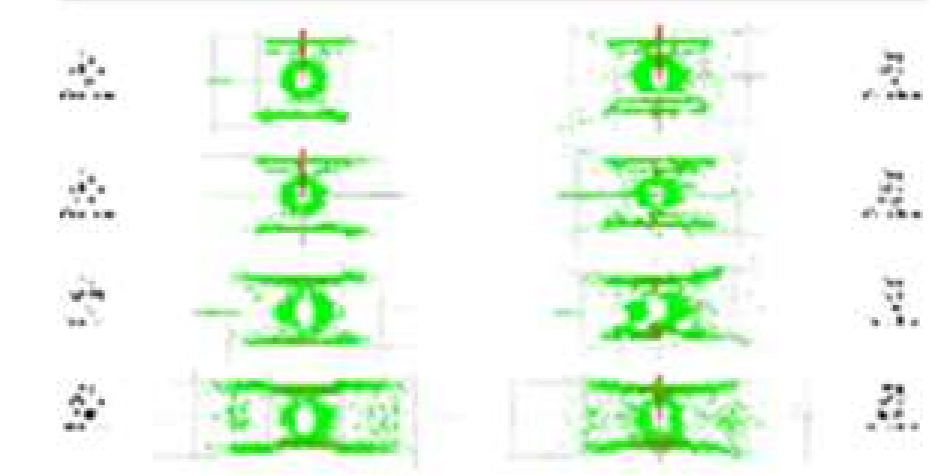


3D Map Generation

### Sensing Simulation under Bad Condition via Generative Models

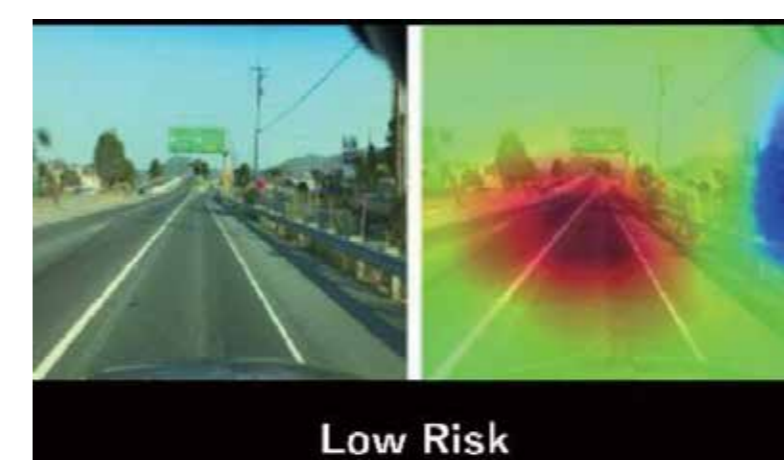


Day-to-Night Image Translation

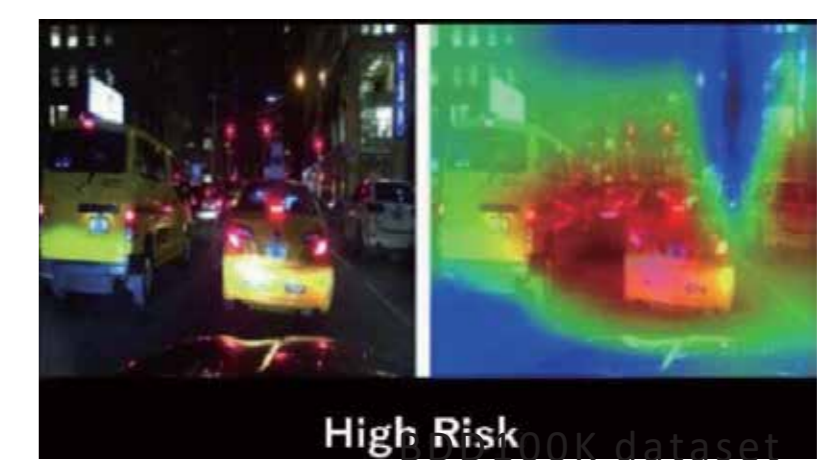


LiDAR Points Style Translation

### Scene Understanding



Low Risk



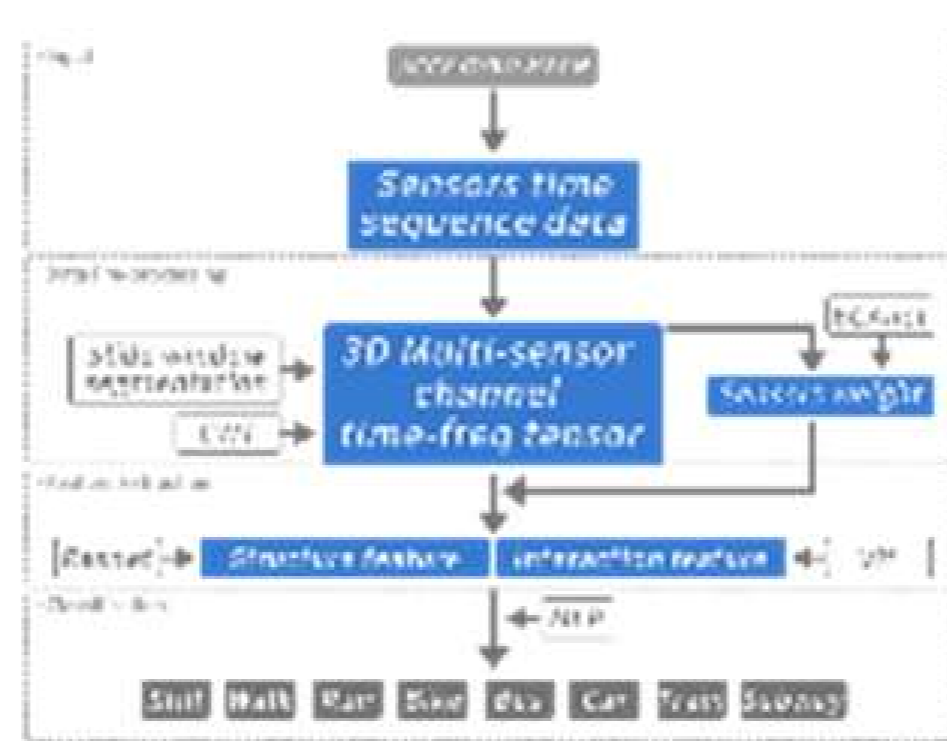
High Risk

Risk Assessment for Driving

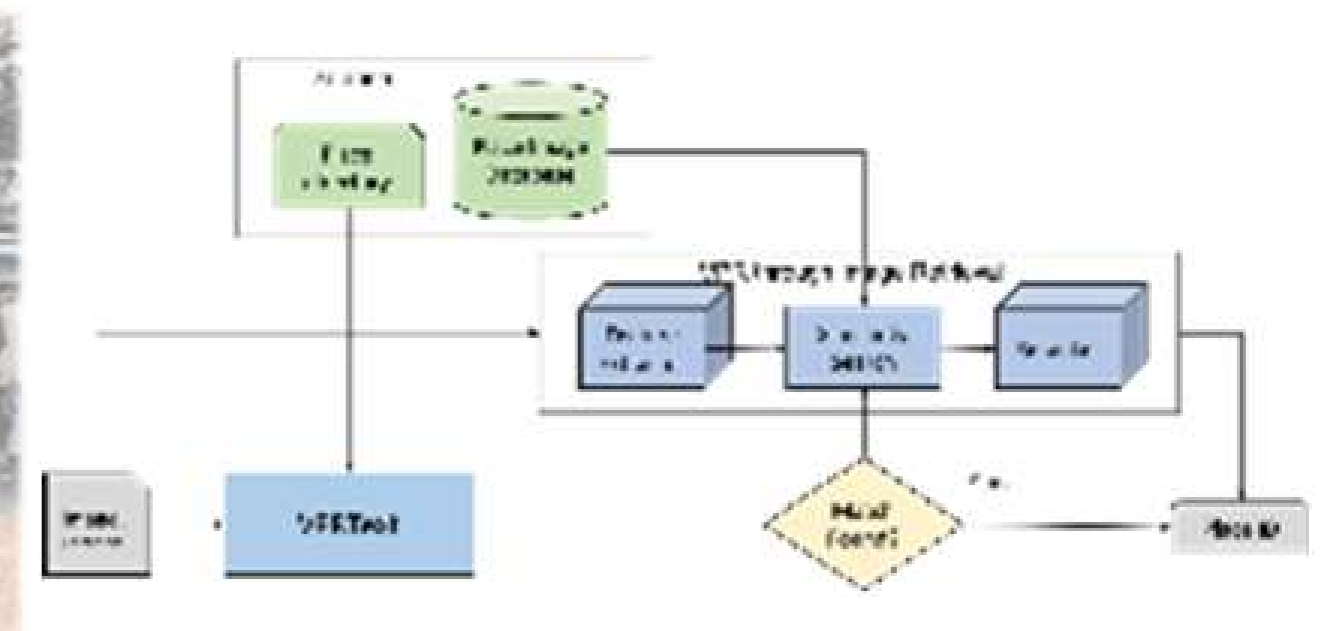
## Portable & Wearable Application



Indoor Action Recognition & Transportation Mode Detection using Smartphone



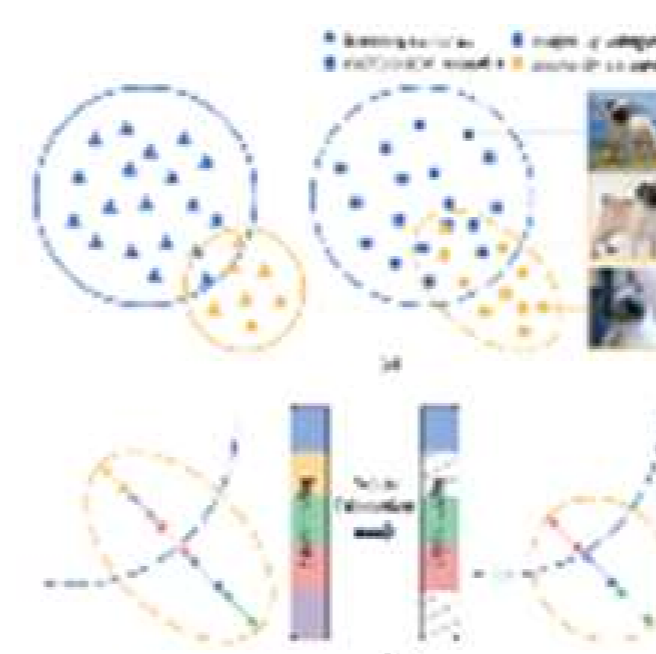
Position Estimation Framework using Smartphone via Image Retrieval



## Deep Learning

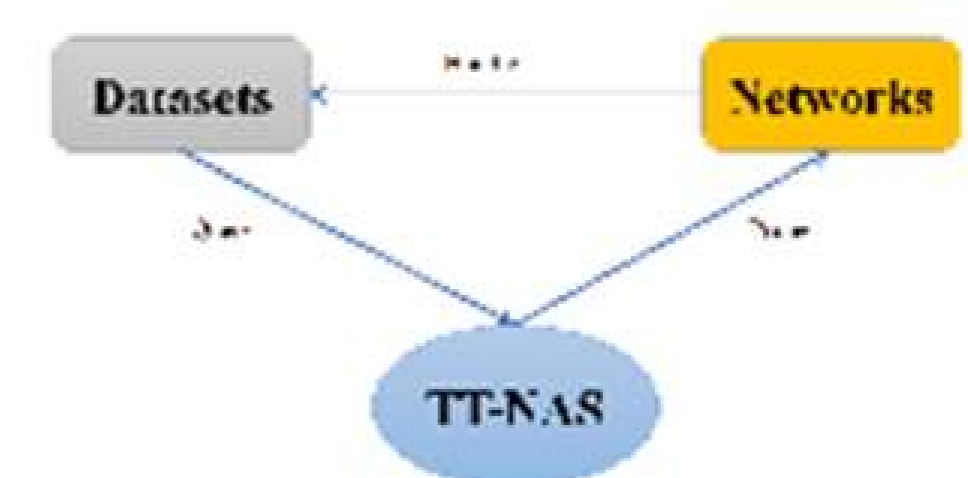


Line Generation for Manga Drawing using Generative Models



Efficient Training of CGANs for Class Imbalanced Data

TT: True Skill Training freeNAS Framework



Neural Architecture Search

