

# MIZUTANI LAB.

## [Big Data Construction of Infrastructural Quantitative Information]

Department of Human and Social Systems

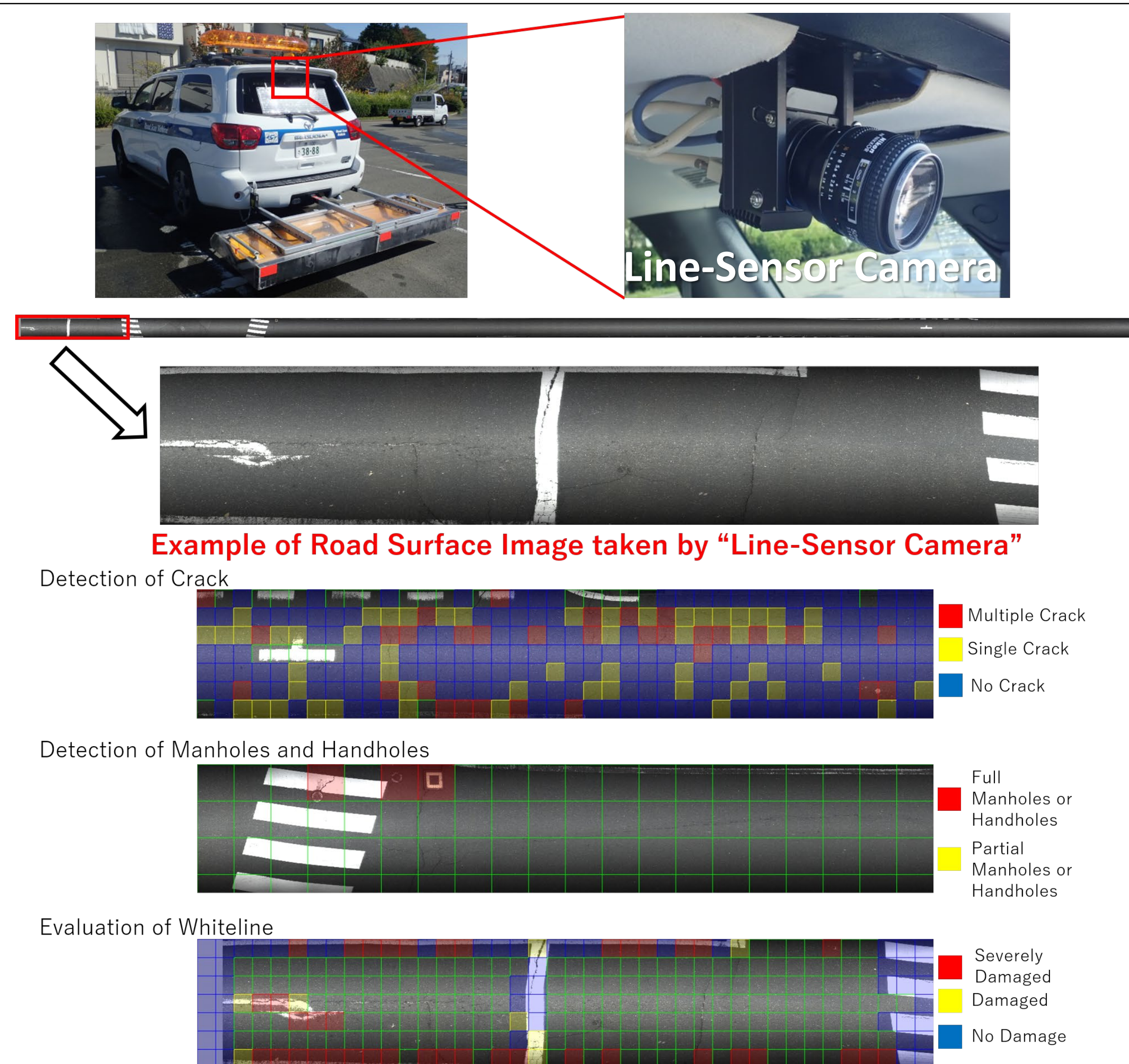
Real-Time Spatial Analysis



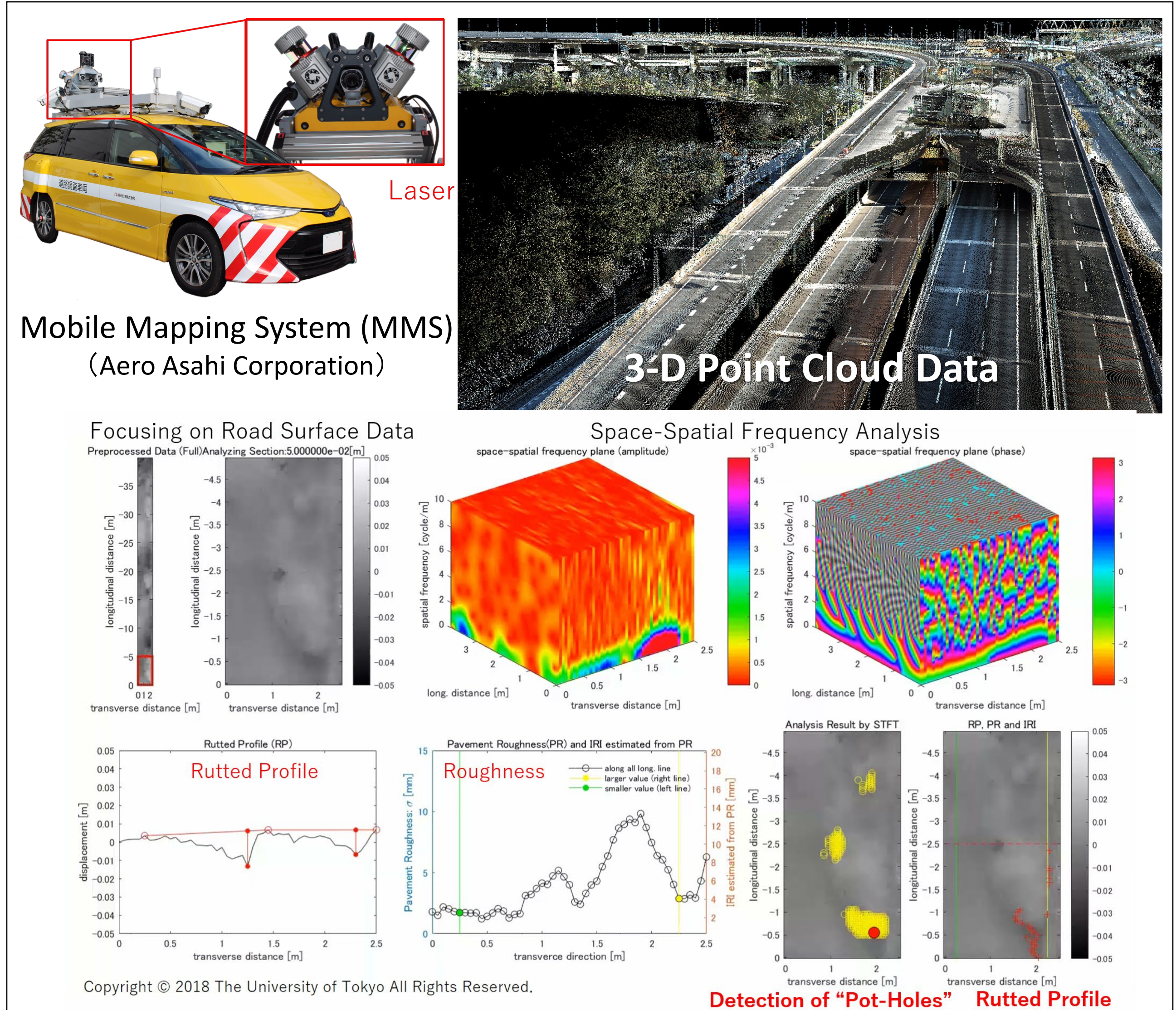
Department of Civil Engineering

<https://www.iis.u-tokyo.ac.jp/en/research/staff/mizutani-tsukasa/>

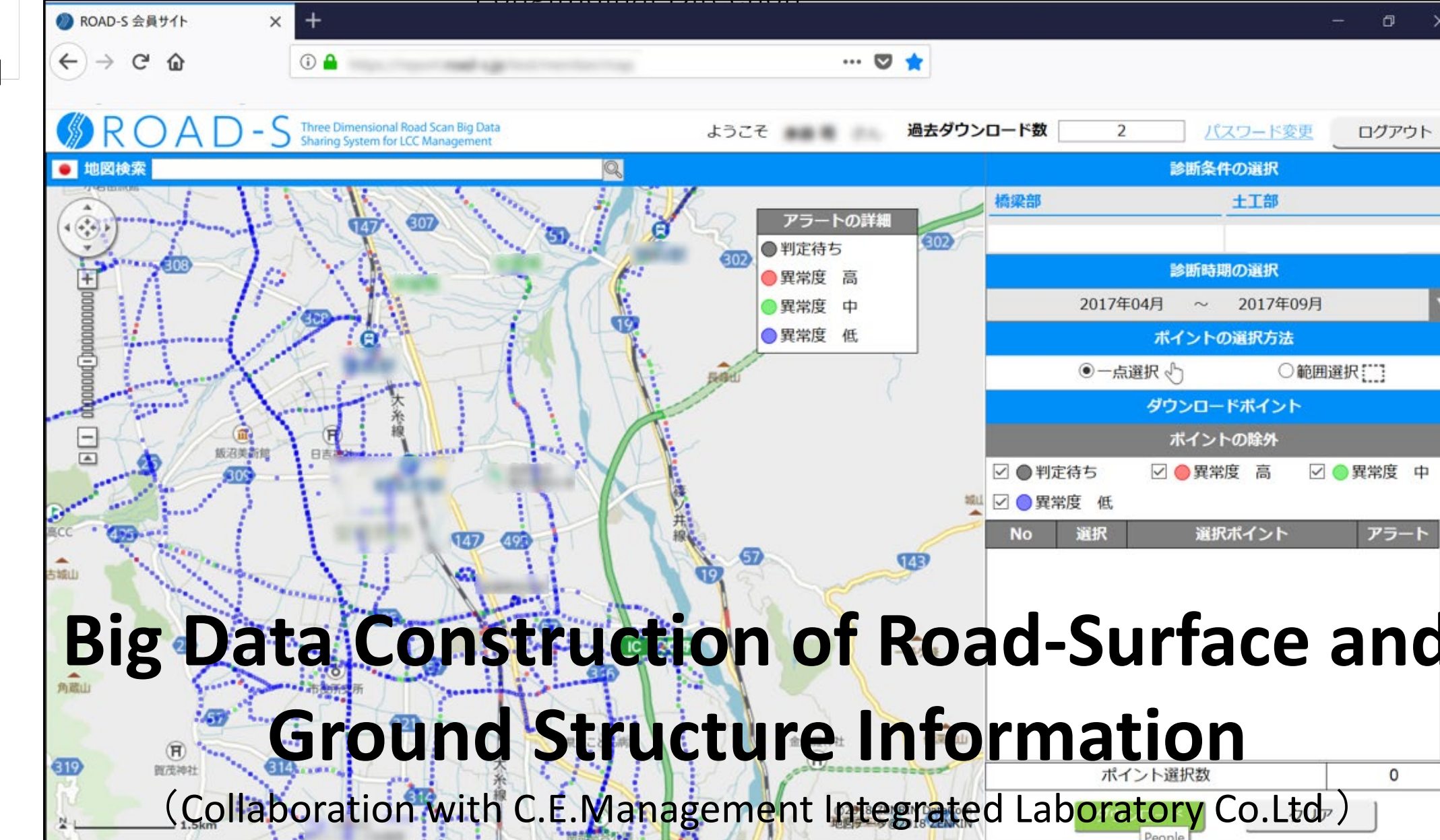
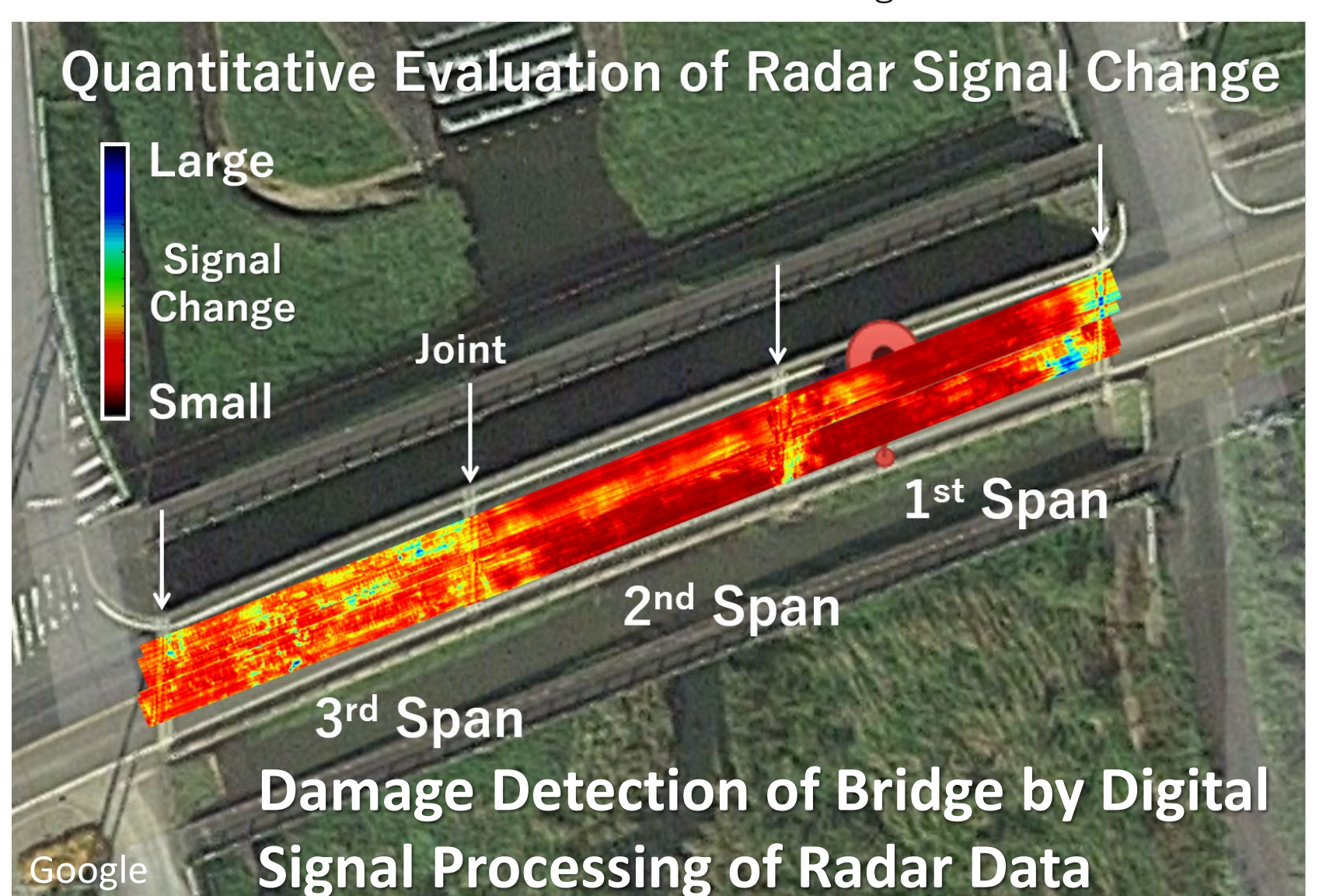
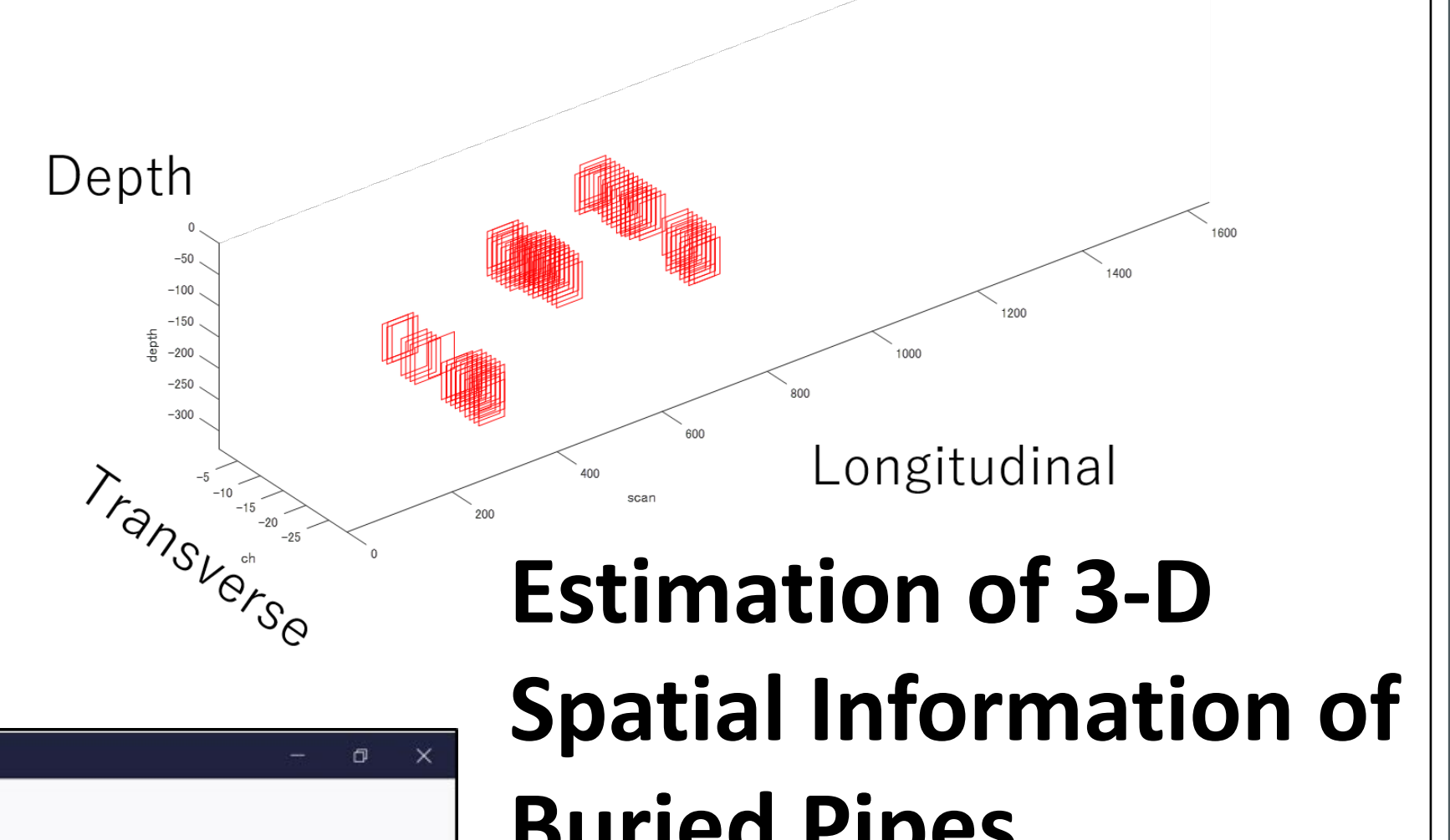
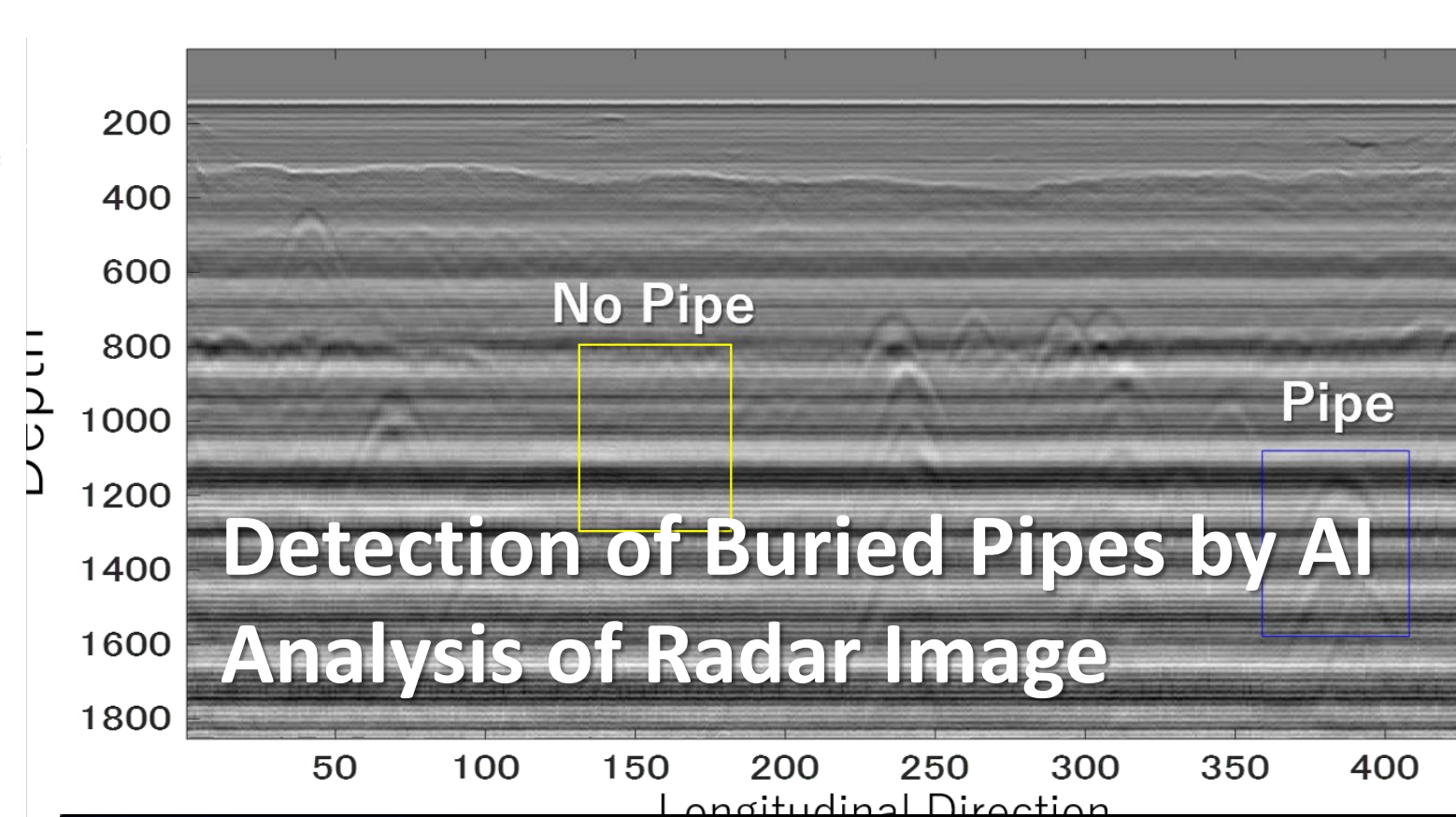
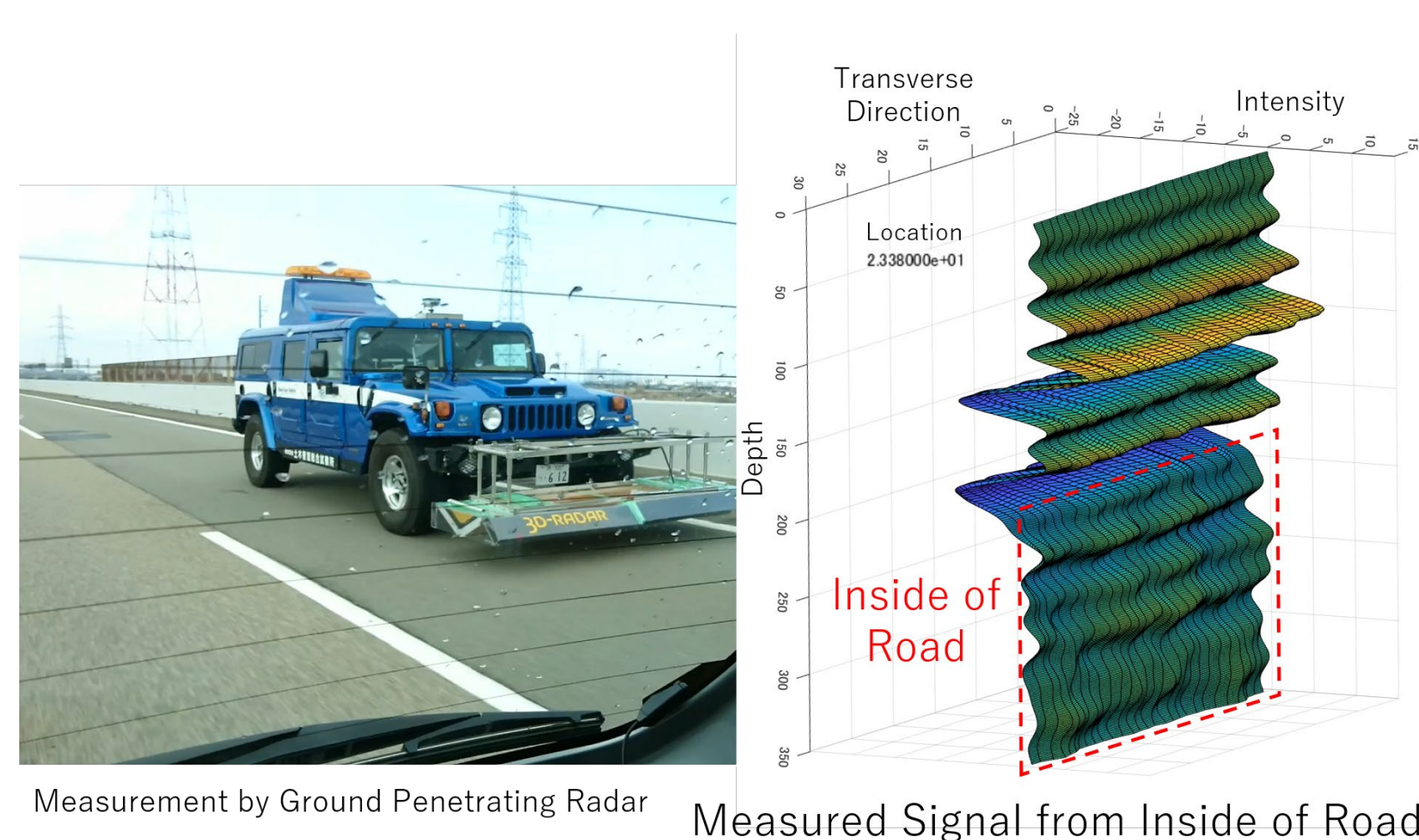
Our Laboratory is Constructing Big Data of Infrastructural Quantitative Information by Digital Signal Processing and Artificial Intelligence Analysis of the Data of State-of-the-Art Laser, Radar and Image Devices.



Analysis Time: 1-2 hours/100 km Image  
**High-Speed and Automatic Diagnosis of Road Surface Condition by Artificial Intelligence Analysis of “Line-Sensor Camera”**



Analysis Time: 10-20 min./100 km Data  
**High-Speed and Automatic Diagnosis of Road Surface Condition by Digital Signal Processing of 3-D Point Cloud Data measured by Mobile Mapping System(MMS)**



**Automatic Big Data Construction of Bridge Condition and Ground Structure Information by Both Digital Signal Processing and AI Analysis of 3-D Ground Penetrating Radar Data**