

IMAI LAB.

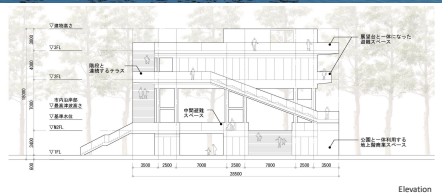
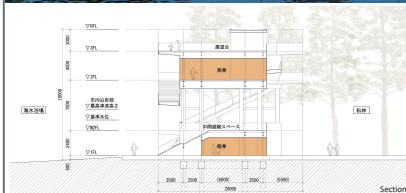
[Architectural Prototype Integrating Tsunami Evacuation and Tourism]

Department of Human and Social Systems, Design-Led X Platform

Architectural Space System

Department of Architecture

<http://http://www.imai-lab.iis.u-tokyo.ac.jp/>



This project is a prototype of a completely new architecture that integrates the functions of tsunami evacuation and tourism. It is a disaster prevention facility that can be used as a tourist attraction on a daily basis, thus increasing the economic impact of the area and improving the safety of the evacuation process by familiarising the public with the facility. The top and roof floors, where approximately 1,200 people will be evacuated based on the number of tourists and the residential distribution of the local population, are of high value as commercial space and observatory deck due to their location in a scenic area. In order to avoid congestion when large numbers of people evacuate, an intermediate evacuation floor is provided. This semi-outdoor place will be actively used as a space for sea bathers, as it is a shaded and airy piloti space created by the upper evacuation space. In addition, a staircase wide enough to evacuate people upwards smoothly is placed on the periphery of the building, together with a highly visible terrace, so that people can experience going up to the observation space on the top floor while enjoying the view in the pine forest.

*This project is in collaboration with Takahashi Kato's laboratory (Planning and Engineering for Social Safety System).

