

KAWAZOE LAB.

[Things and Thinking]

Institute of Industrial Science

<http://www.kwz.iis.u-tokyo.ac.jp>

Architectural design Scenery theory

Things and Thinking

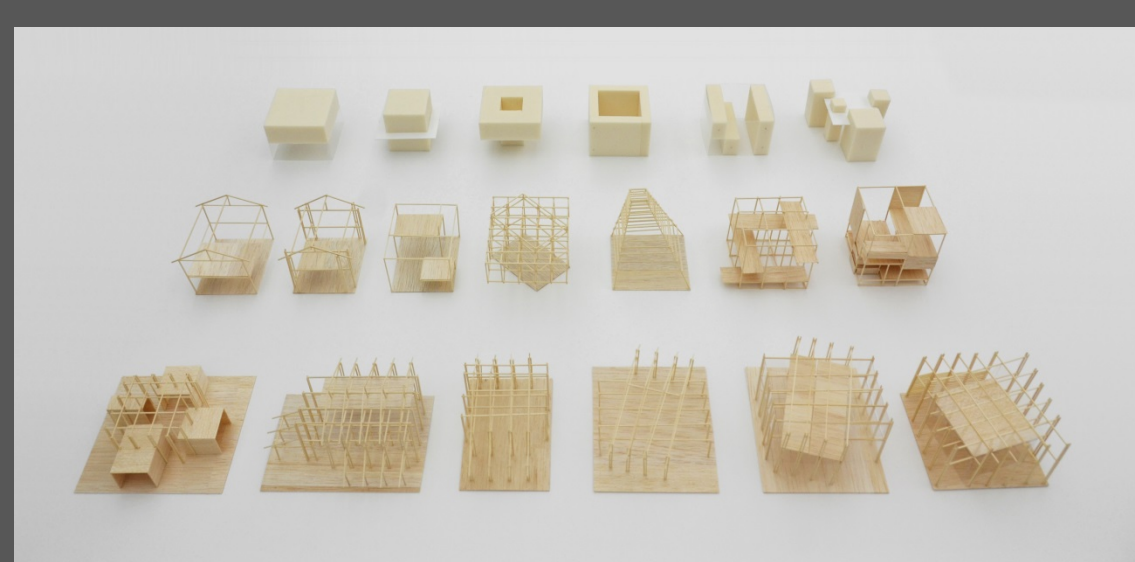
Mejirodai International Hall of Residence



©Shigeo Ogawa

Mejirodai international lodge is a stage where students and researchers from diverse cultural backgrounds can share everyday life while at the same time developing a deep appreciation and a greater sensitivity to the world at large. Thus, laying down a strong foundation for a well integrated international community.

Residence in Sano



Sitting at a corner of a temple in Sano, Tochigi, the residence is required to correspond to the history of the temple and the lifestyle of its owner. In response to the continuity and future changes of the temple, the residence is made of nested wooden frame.

The Pilothouse in Sasebo



©Shinkenchiku-sha

This house was built as an Experiment of the new and innovative low-carbon lifestyle. It incorporates the Sasebo shipbuilding technology. In addition, the construction material also serves as the equipment material. Furthermore, The framework temperature is controlled in a specific way which makes the house behave like a living organism.

Smart Hotel in Sasebo



In this building's design we focused on improving the indoor air quality without resorting to air conditioning systems. we designed an aperture where radiation and wind passes through the roof to control the distribution of sunlight and air flow to the various rooms.

Kawazoe Lab(S202)



New building for the General Library of the University of Tokyo



The General Library's new wing, should serve two functions; the expansion of archives, and the creation of new knowledge. By fusing the old and new library, The resulting space will serve as the new base of activity to facilitate interaction and collection of intelligence.

Renovation of General Library



©Shigeo Ogawa

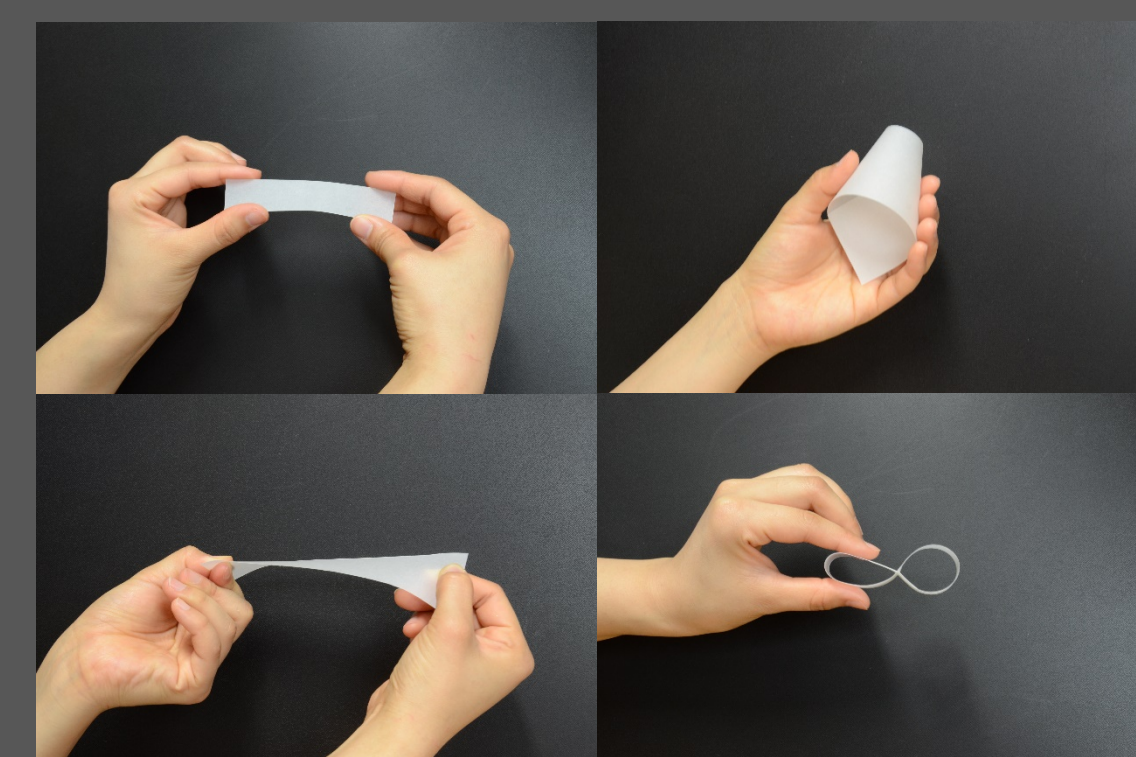
This is a large-scale renovation plan for the General Library, which was founded in 1928. The plan also includes adding seismic reinforcement to the library building. Our design concept aims to Preserve both the Architectural and Historical value and in the same time to create a new space that promotes active intellectual interaction.

Project in Kada



In cooperation with multiple companies and the local residents we conducted a survey in the historic fishing port of Kada in the Wakayama prefecture. Using the results of this survey, we came up with a proposal to help improve the living conditions and combat pressing issues such as population outflow and aging society.

Project in Takeo



The intention of this project was to generate architectural forms using paper. Using the paper's inherent qualities such thickness and weight, we created a wide verity of forms that could be used in architecture and furniture design.