

KAMIJO LAB.

[Support Movement and Behavior utilizing Information Devices]

Center for Socio-Global Informatics

<http://kmj.iis.u-tokyo.ac.jp>

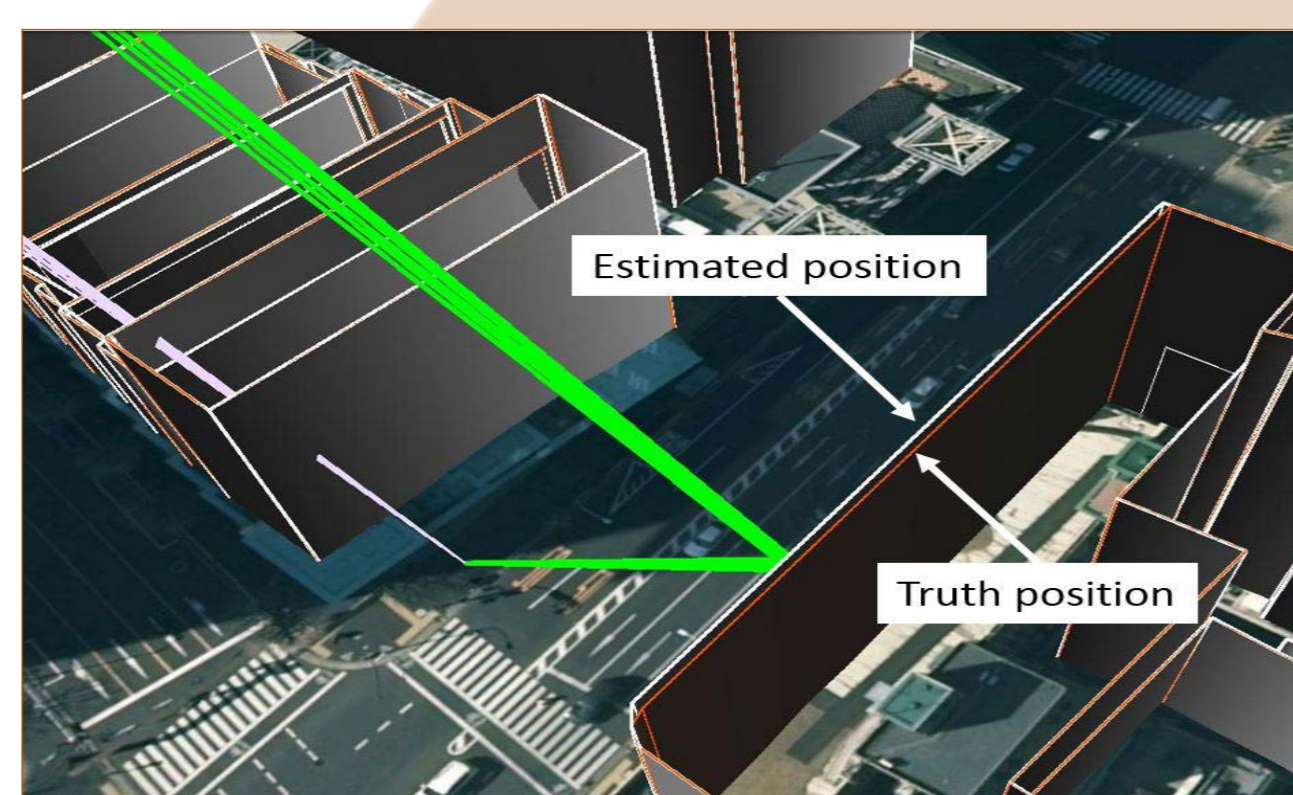
Applied Multimedia Information Processing

Science and Technology, Information and Communication Engineering /
Initiative in Information Studies Graduate School of Interdisciplinary Information Studies

Support Movement and Behavior utilizing Information Devices

3D Map

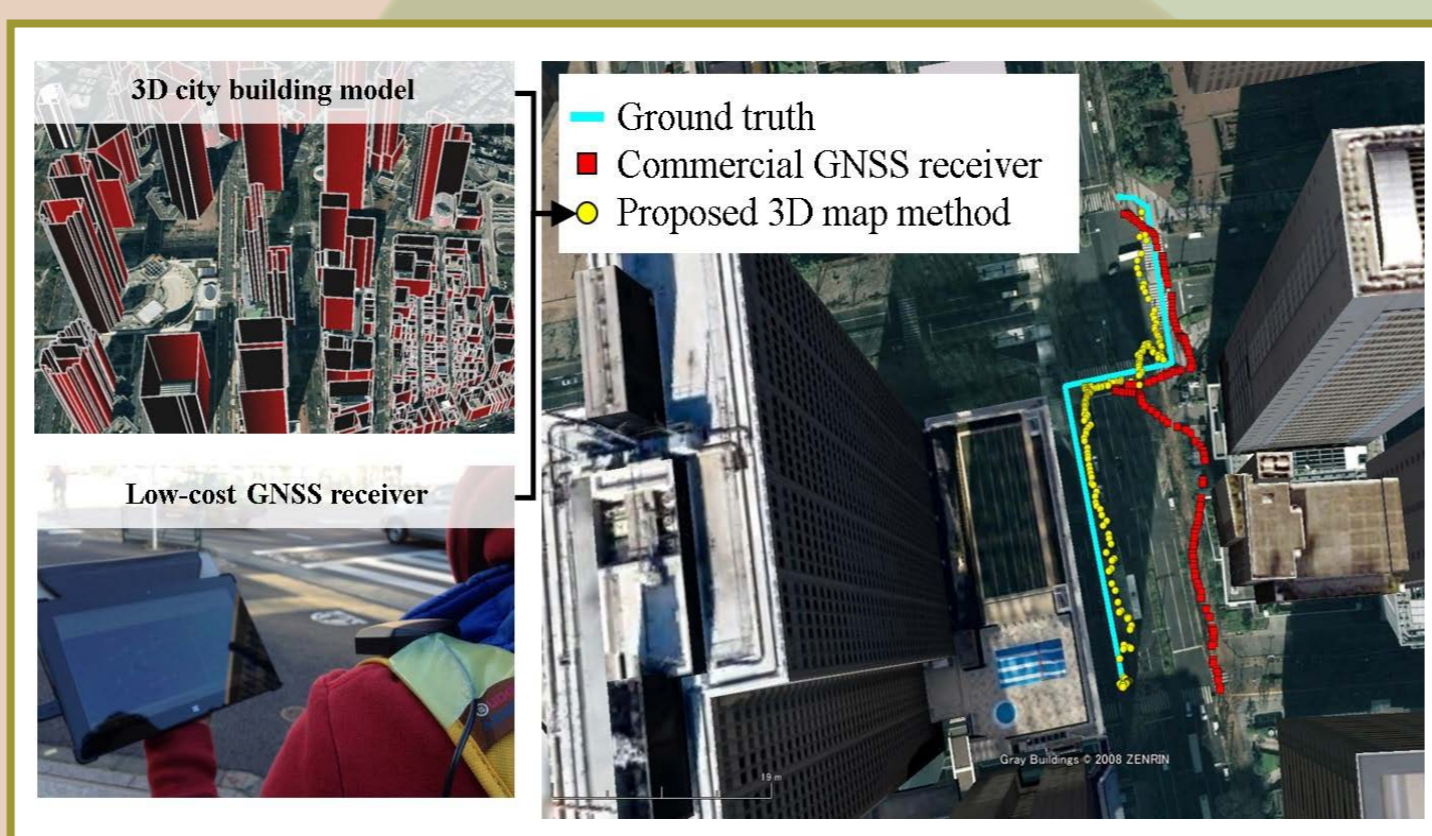
3D Map Correction using GPS Measurement



3D Building Map Construction using Point Cloud Data & 2D Map



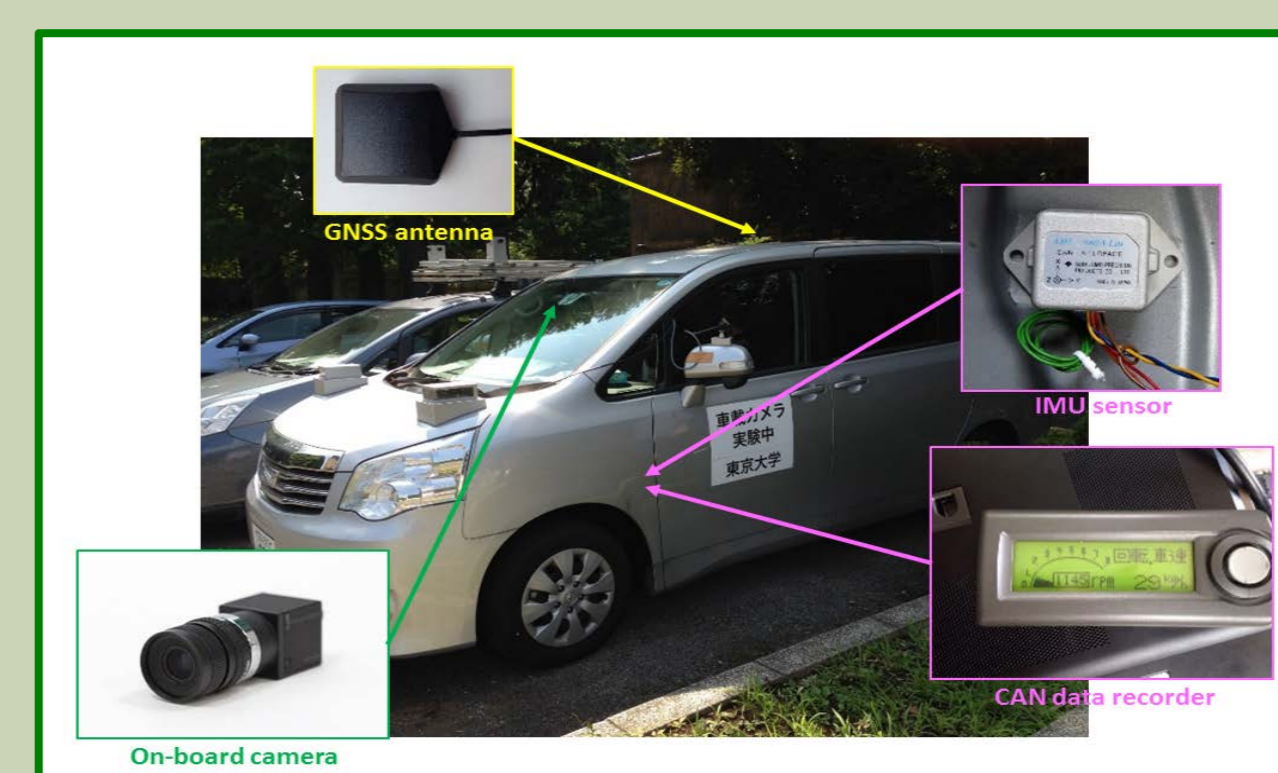
3D City Building Model Based Positioning Method using Multi-GNSS in Deep Urban Canyons



Self Localization

GNSS Positioning Result Improvement using Height Based Conventional Method

Integration of Passive Sensors for Vehicle Self-Localization in Urban Environment

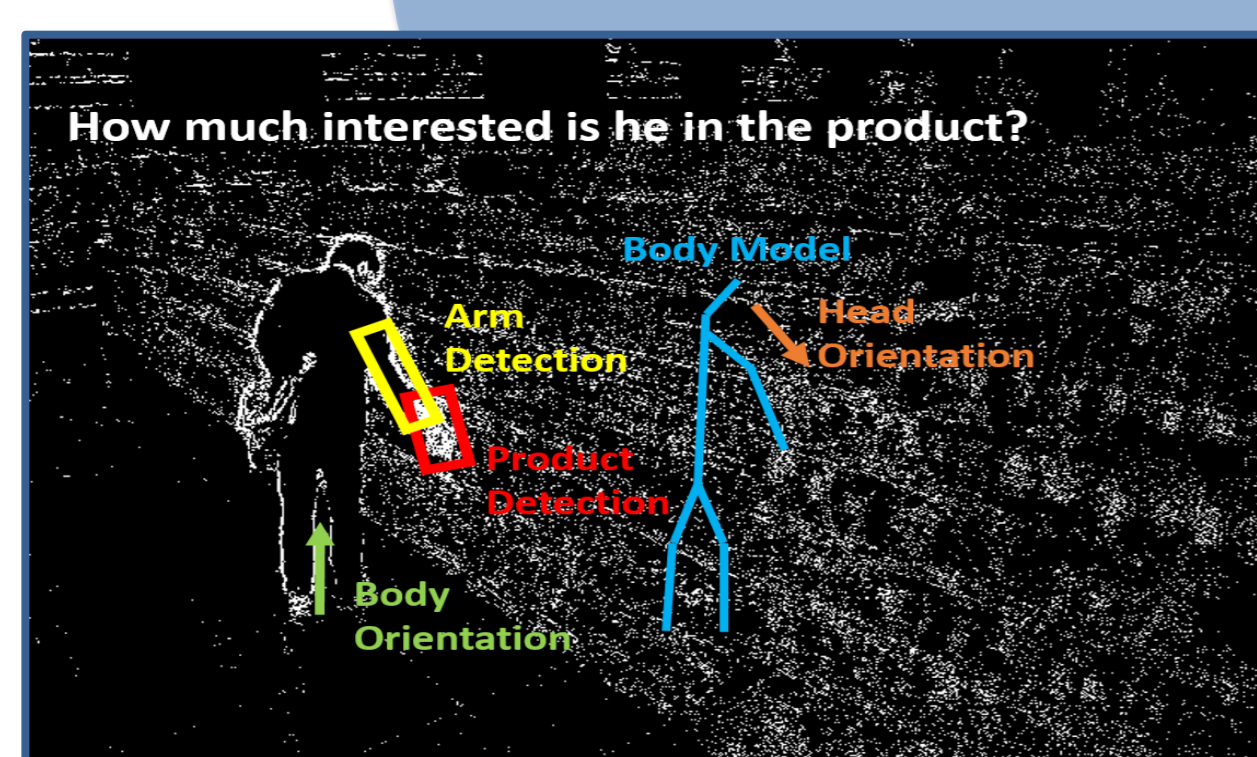


For Autonomous Driving

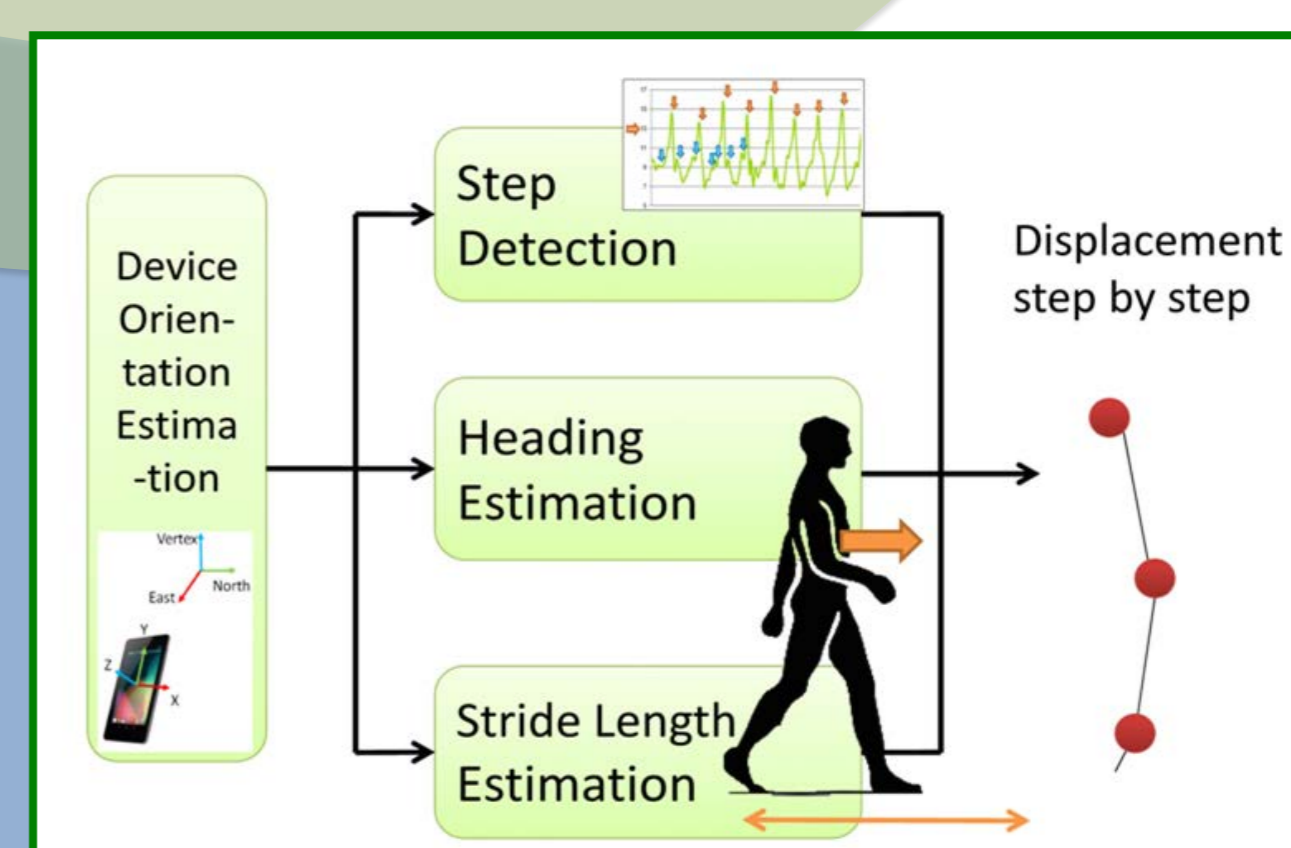
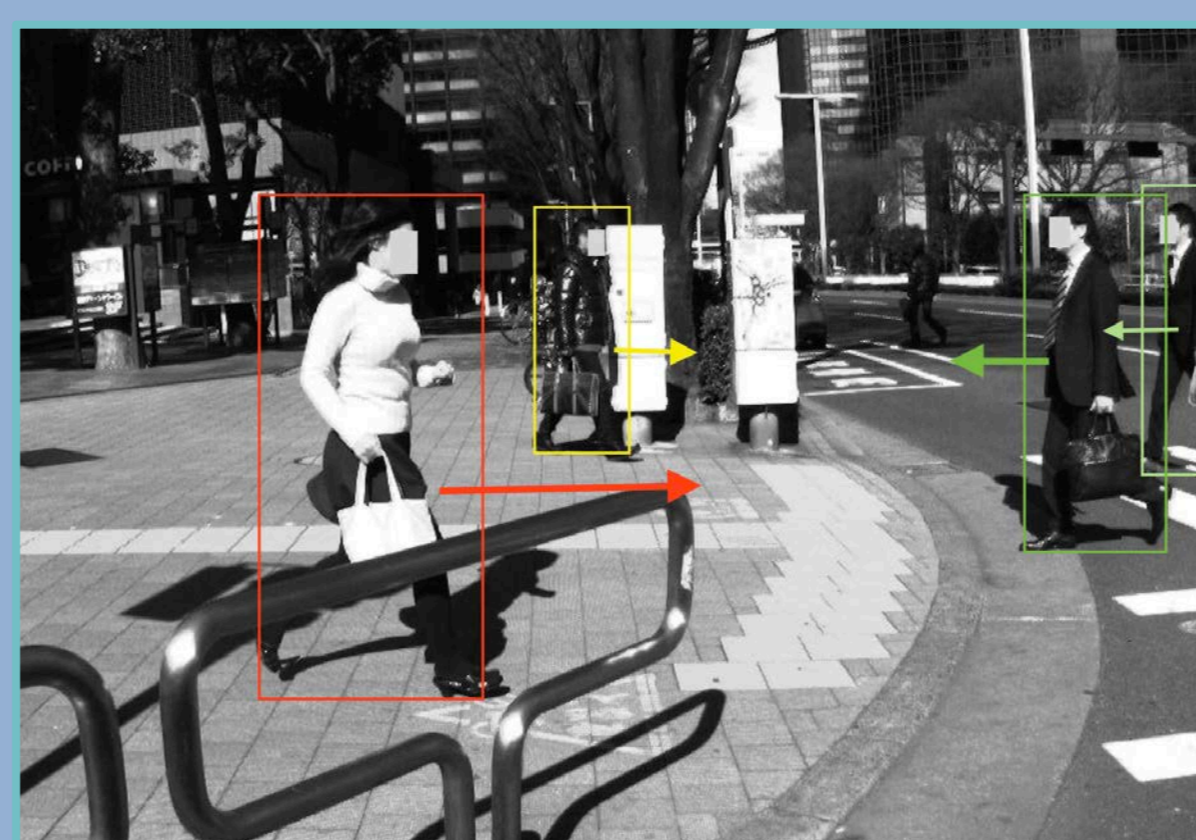
3D Mapping and Self Localization

Location Estimation and Pedestrian Dead Reckoning using Mobile Devices

Customer Behavior Recognition in Retail Surveillance Video



Pedestrian Behavior Understanding in Traffic Scenes



Pedestrian Pose Estimation from on-Board Camera

Scene Understanding

※These researches are permitted by the compliance committee of the university.