



Matsunaga Lab.



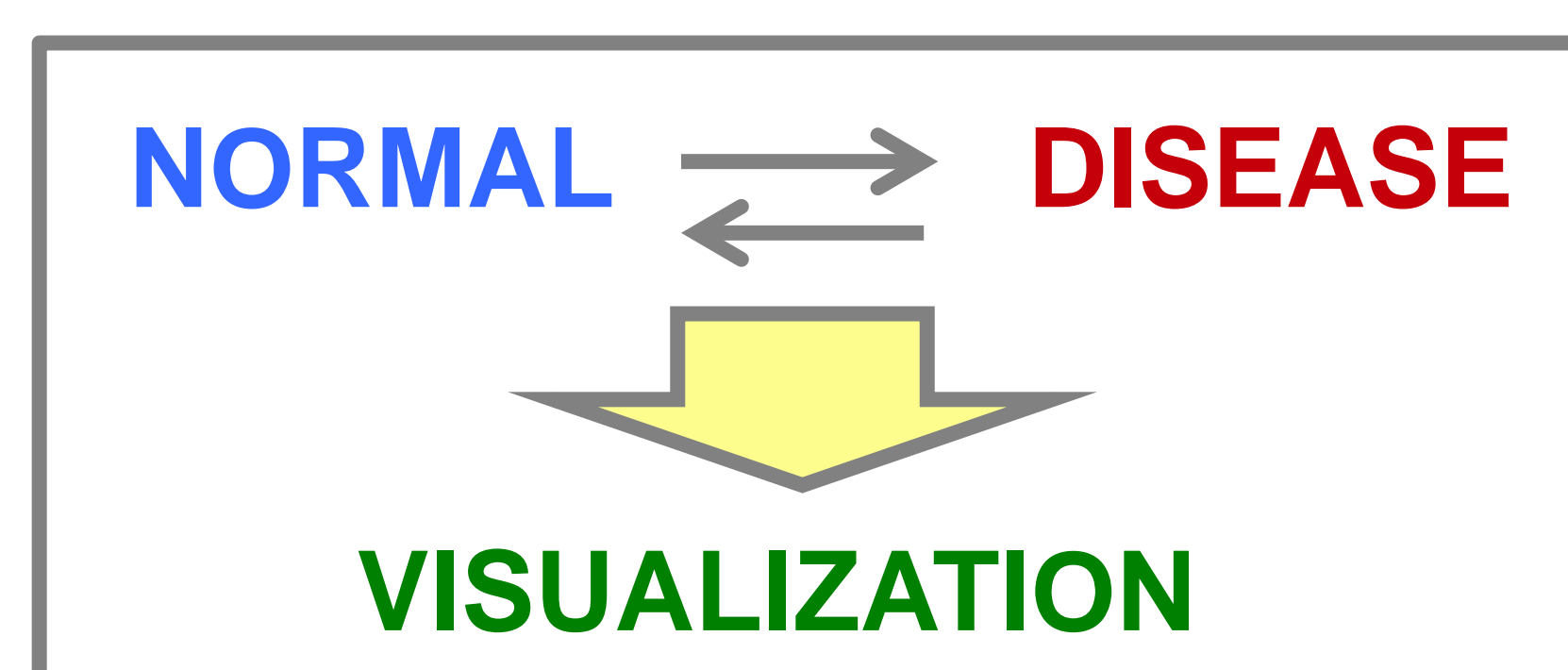
IIS, Center for International Research on Integrative Biomedical Systems

<http://matlab.iis.u-tokyo.ac.jp>

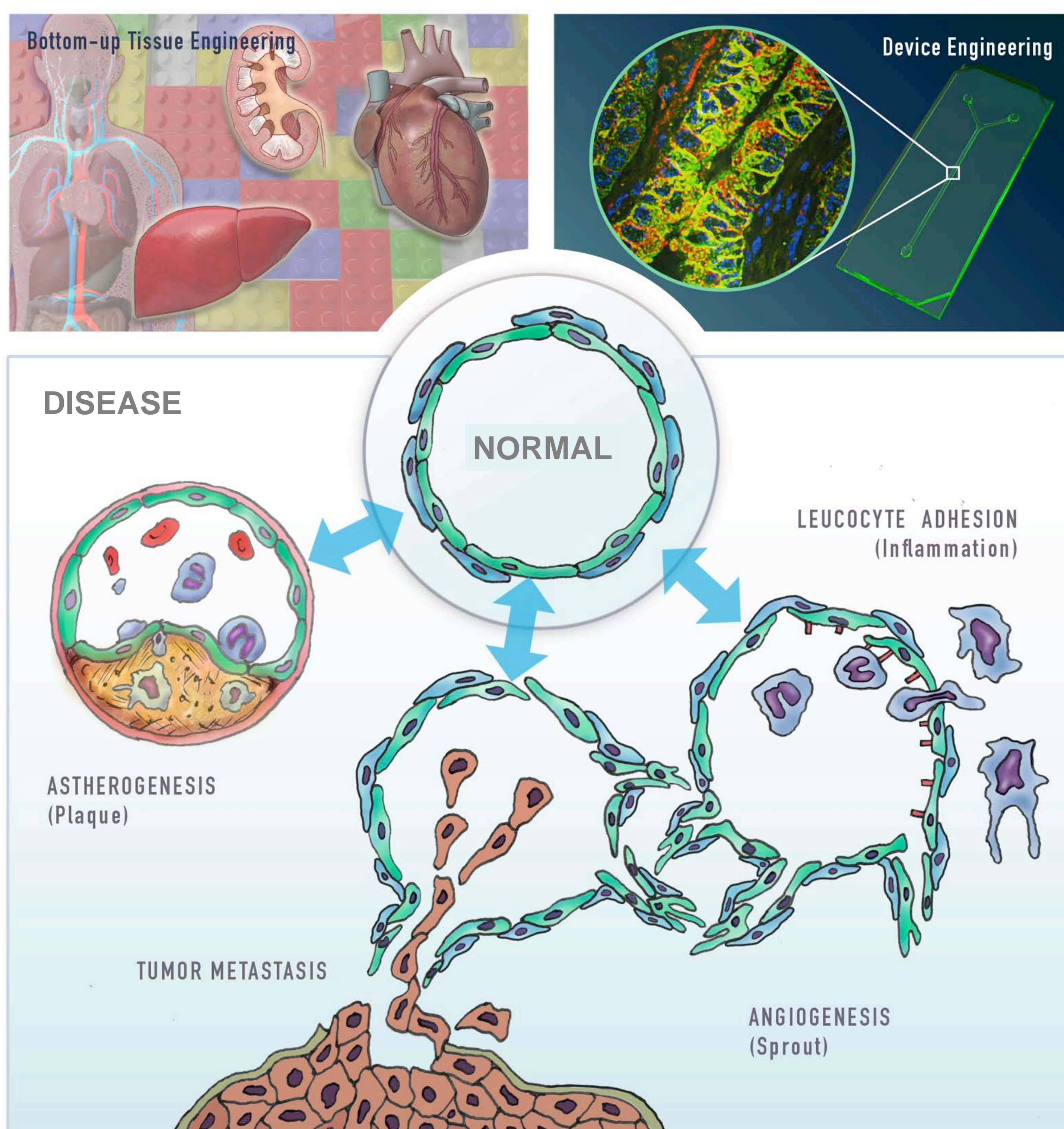
Bottom-up tissue engineering, Vascular tissue engineering, Organ on a chip

CIBiS ▪ Industrial applications

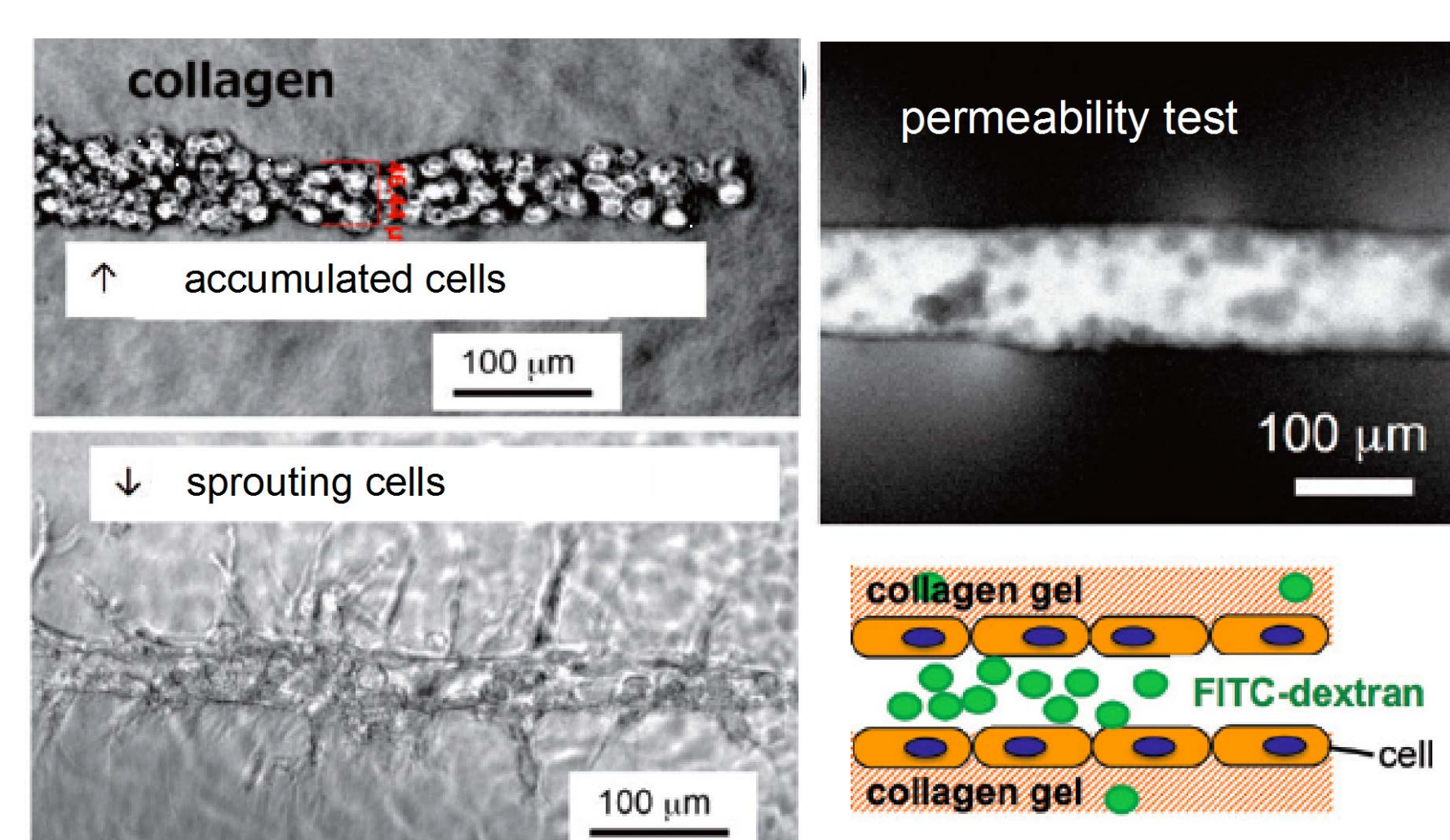
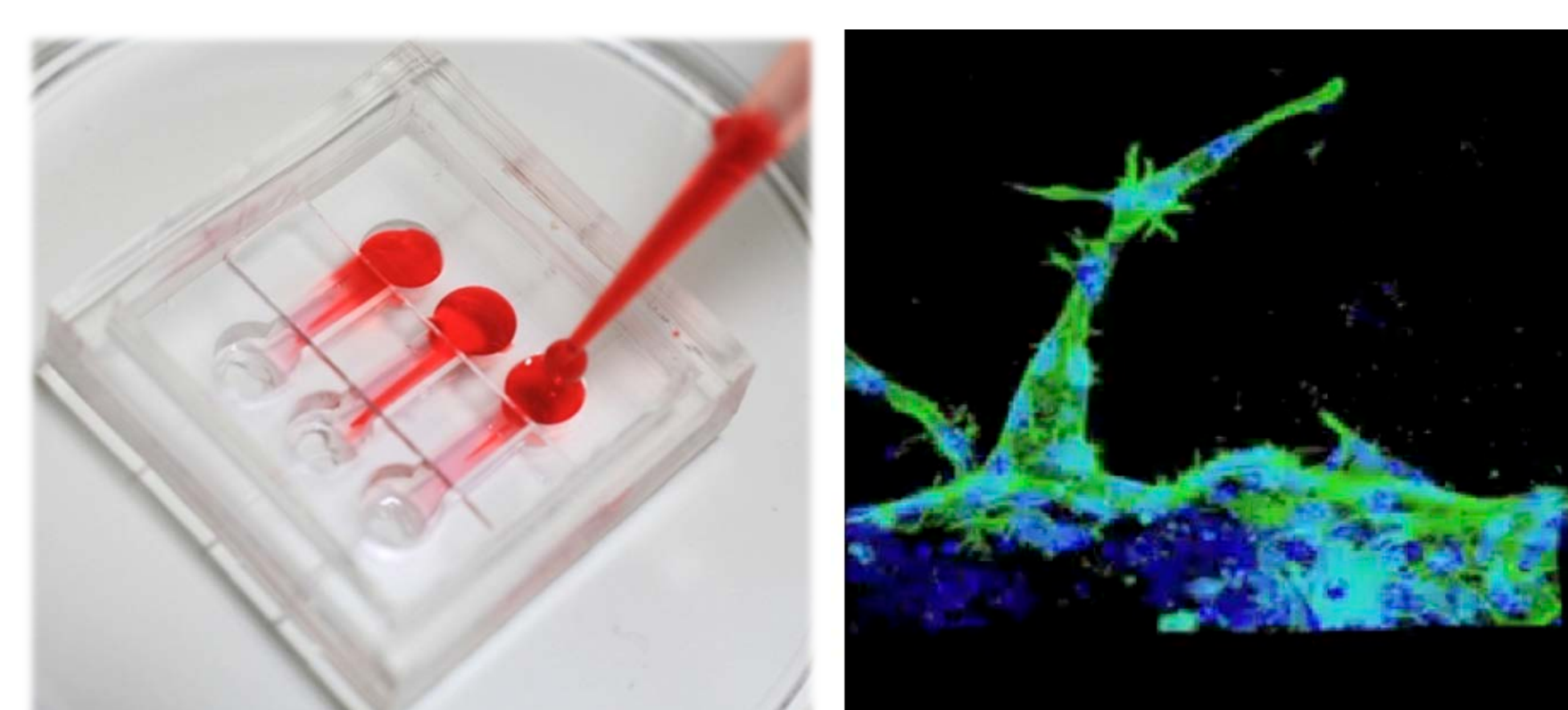
Fabrication of 3D Living Tissues to Understand Disease Mechanisms



Matsunaga lab has been focusing on disease tissue engineering by combining biomaterial synthesis, microfabrication and cell biology. Our goal is to develop controllable *in vitro* models to “visualize” the microenvironment of tissues from normal to disease state at the cellular level. This approach is a powerful tool for mechanistic understanding of disease and drug discovery.



Microvasculature chip



Biomaterials research

