



LIMMS

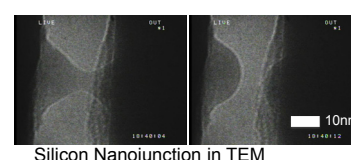
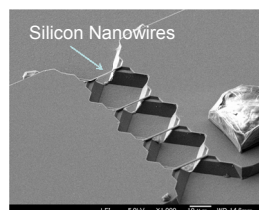
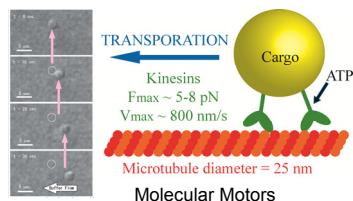
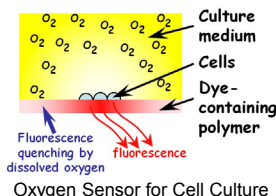
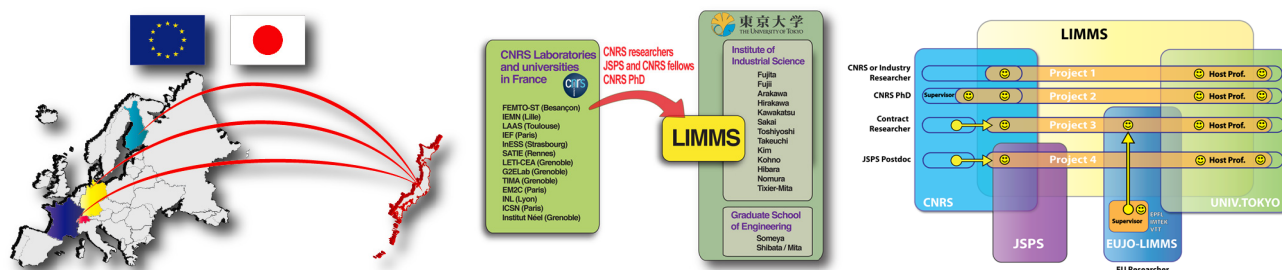


Laboratory for Integrated MicroMechatronic Systems

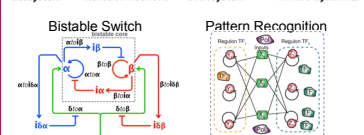
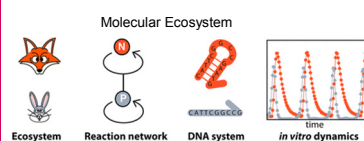
<http://limmshp.iis.u-tokyo.ac.jp/>

LIMMS: A joint laboratory between France, Europe and Japan

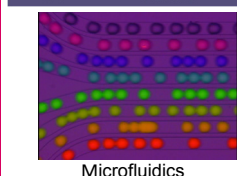
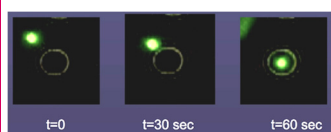
LIMMS is a joint research unit between CNRS (Engineering Institute) and IIS established in 1995. LIMMS welcome CNRS researchers, post doctoral fellows supported by JSPS and CNRS, and PhD students. Since 1995, more than 110 researchers were hosted in IIS for periods longer than 2 years. Since December 2011, LIMMS and his EUJO-LIMMS extension became the European Commission's first international laboratory in Japan.



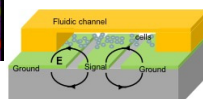
Silicon Nanojunction in TEM



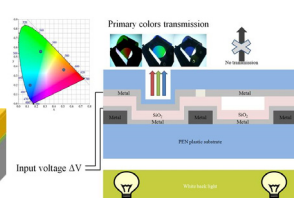
in vitro Reaction Networks for Complex Behaviors



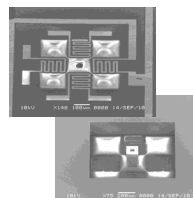
Microfluidics



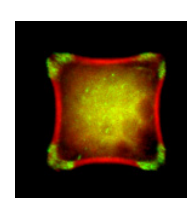
RF- Biosensor



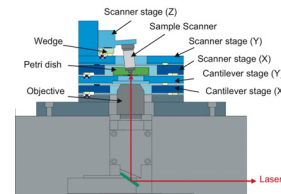
Large Area MEMS on Flexible Film



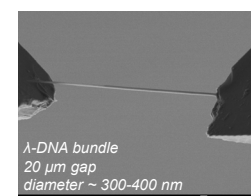
Air-jet Micromanipulator



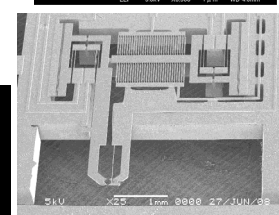
Smart structures



AFM for in Liquid Measurements



λ-DNA bundle
20 μm gap
diameter ~ 300-400 nm



Silicon Nanotweezers