

KAMIJO LAB.

[Safety for Pedestrian and Vehicle]

Center for Socio-Global Informatics

<http://kmj.iis.u-tokyo.ac.jp>

Applied Multimedia Information Processing

Information Science and Technology
Information and Communication Engineering

Sensor Technologies for Road Safety

Safety Assistance System using On-board Sensors

The traffic accidents still remain as a serious problem. We proposed the robust tracking algorithms and developed the sensors to detect the abnormal flow of vehicles or pedestrians imminent to collision. Our ultimate goal is to protect vulnerable road users and increase the road safety by implementing safety assistance system.

Pedestrian Detection

Pedestrian detection and trajectory estimation by on-board monocular camera
Pedestrian detection using Received Signal Strength Indicator

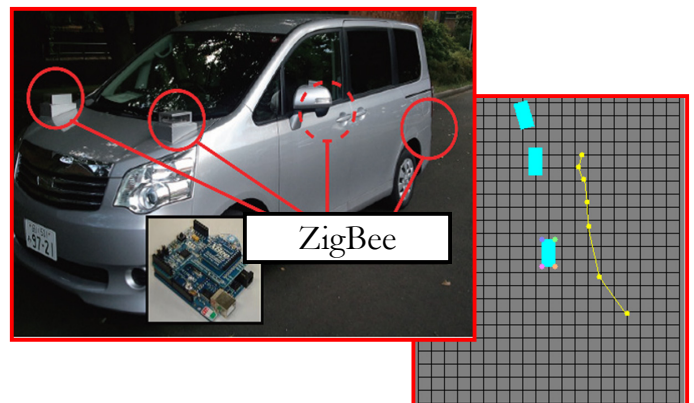
Traffic signal control

Activity recognition using mobile devices

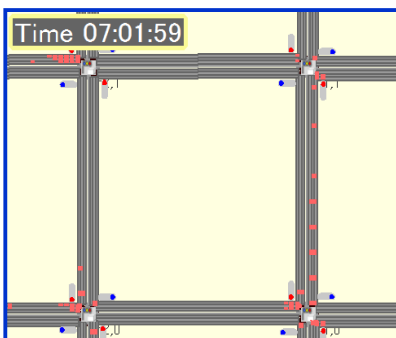
Human pose recognition for retail surveillance



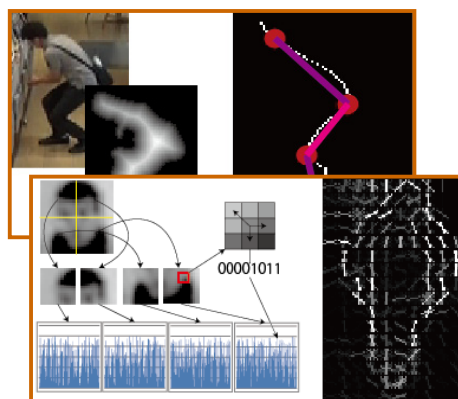
Pedestrian detection by monocular camera



Pedestrian detection using RSSI



Traffic signal control



Human pose recognition for retail surveillance



Activity recognition using mobile devices