

OHARA LAB.

[Effective Use of Disaster Information]

International Center for Urban Safety Engineering

<http://disaster-net.iis.u-tokyo.ac.jp/>

-Dept. of Civil Engineering
-Interfaculty Initiative in Information Studies

Integrated Disaster Management Engineering

Disaster Prevention by Use of Disaster Information

Strategies for Better Use of Disaster Information

Disaster information such as risk information, disaster warning can reduce the expected damage due to future disasters if it is properly used. For this, design of strategies for “Production-Transmission-Use of Disaster Information” based on precise understandings of people’s literacy and process of information transmission is necessary. Ohara lab aims to study these strategies for earthquake disaster and water disaster

- Survey on Citizen’s Awareness and Better Use of Earthquake Early Warning (EEW)
- Study on Evacuation Plan in Case of Large-Scale Urban Flood in Tokyo Metropolitan Area
- Study on Support System for People Who Have Difficulty in Returning Home during Disaster
- Study on Spatial Distribution of Disaster Prevention Facilities Considering Depopulation

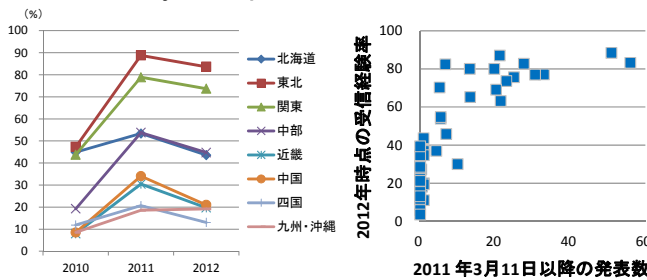


Fig.1 Receiving Experience of EEW in Each Region

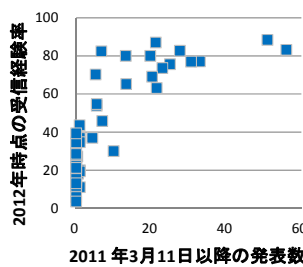


Fig.2 Relationship of Number of EEW and Receiving Experience in Each Prefecture

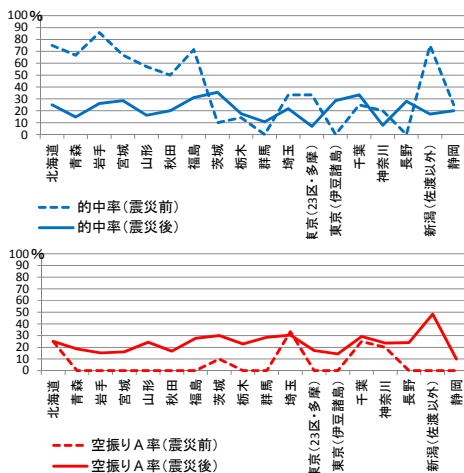


Fig.3 Ratio of Hit and Failure of EEW between 2007-2012

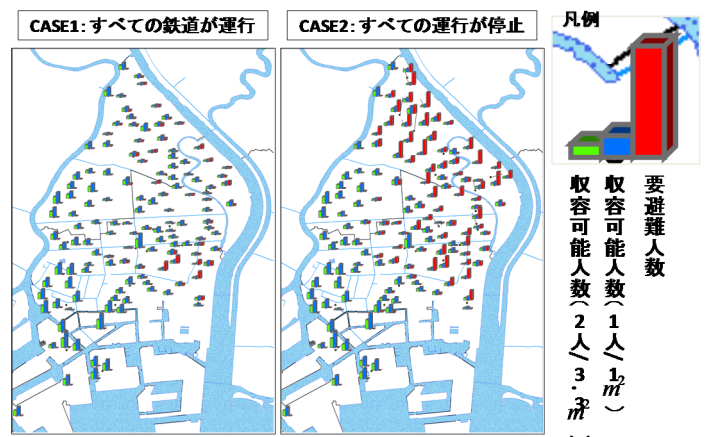


Fig.4 Capacity of Evacuation Buildings in Case of Urban Flood in Koto Delta Area



Fig.5 System for Imaging Human Evacuation in Case of Urban Flood