



Kawasaki Lab.

[Regional development and disaster mgt.]

International Center for Urban Safety Engineering (ICUS)

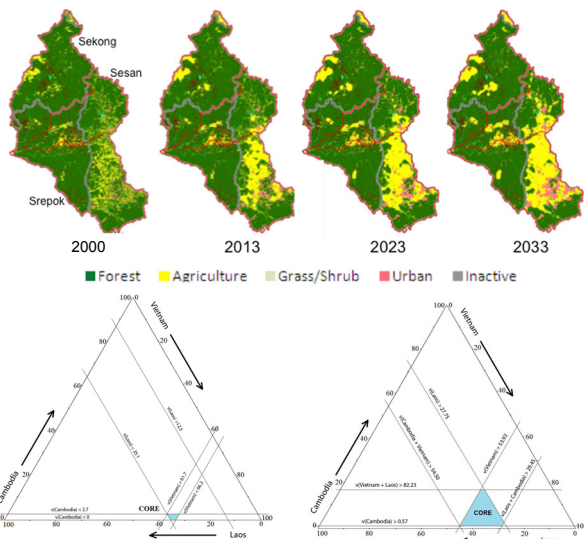
<http://icus.iis.u-tokyo.ac.jp/kawasaki/en>

Optimal strategy and responding technology

Strategy for rapid, dynamic change in Asia

Investigating regional development and disaster management in Asia, residing at Asian Institute of Technology (AIT), Thailand as hub for research activity. Capturing temporal-spatial changes using geospatial technology for problem solving and planning in local level.

Optimal development strategy adapting to socio-economic and climate change
<landuse modeling, transboundary river basin mgt.>



Future land-use prediction in a tributary of Mekong River basin (above) and comparison of cooperative strategies among riparian countries using Game Theory (below)

Developing disaster information dissemination system covering diverse society
<rural mountain, foreigners, poverty, disparity>



Workshops with farmers in Thailand, Laos, Cambodia, Vietnam, Myanmar, and Bangladesh



Workshop and analysis of foreigners' information needs in case of Tokyo Metropolitan earthquake, collaborating with Prof. Meguro, ICUS

Investigating government's disaster response plan and reduction technologies
<coordination, information dissemination and sharing>



Expert workshop with governmental officers and local leaders

Creating teaching material and curriculum of geospatial technology
<gis (geographic information system), geodatabase>



Book publication

Lecture and exercise at Yangon Technological University (pic), AIT, United Nations University