

YASHIRO LAB.

[Cutting Edge for Smart Buildings]

Department of Human and Social Systems

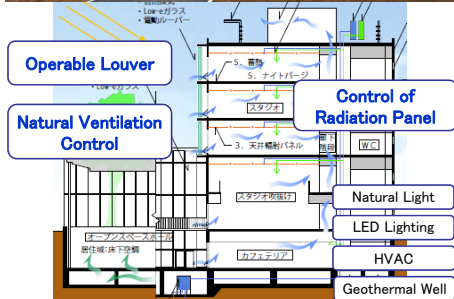
<http://yashirolab.iis.u-tokyo.ac.jp/>

Management of Project

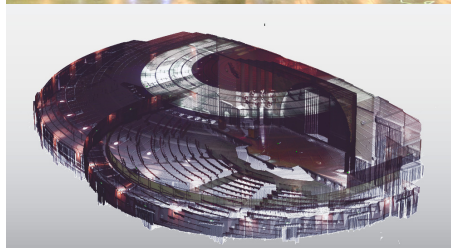
Engineering/Architecture
(Interdisciplinary Information Studies)
(Technology Management for Innovation)

Cutting Edge for Smart Buildings

Introducing studies aimed at the realization and popularization of smart buildings, such as monitoring technologies for continuously improving the *use of buildings*.



Monitoring and Control of ZEB @ Komaba



Acquiring As-Is Information via 3D Scan

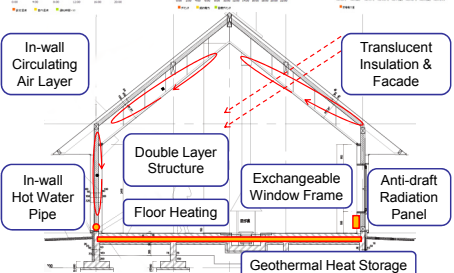


R&D of Smart House Technologies



Monitoring List

- Electric Consumption
- Energy Usage
- Material Temperature
- Room Temp./Humidity
- Seismic Activity



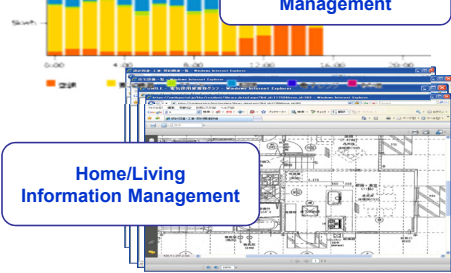
Cold Climate Experimental House



Employment/Labor
Record
Management

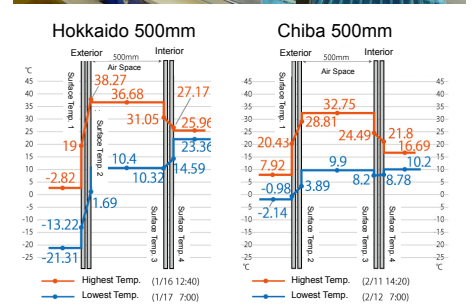


Energy Demand
Management



Home/Living
Information Management

Log & Demand Information Management



Solar Radiation & Aperture Studies