



W. Takeuchi lab

[Monitoring global environment changes and international technology collaboration]

Department of human and social systems

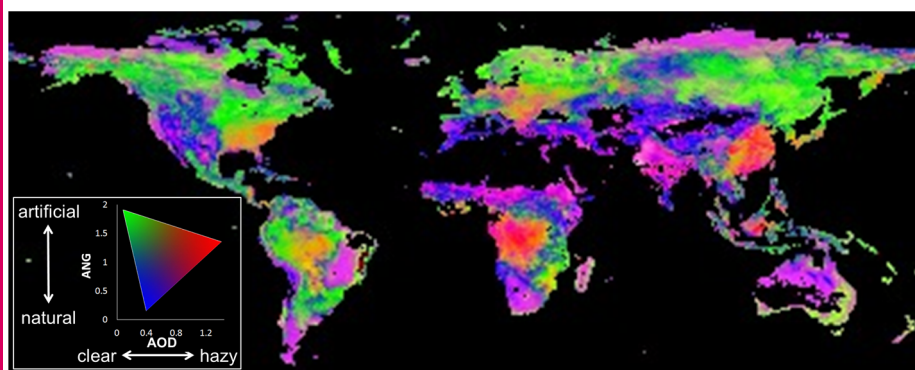
<http://stlab.iis.u-tokyo.ac.jp/>

Remote sensing of environment and disaster

Department of civil engineering, faculty of engineering

Monitoring global environment changes and international technology collaboration

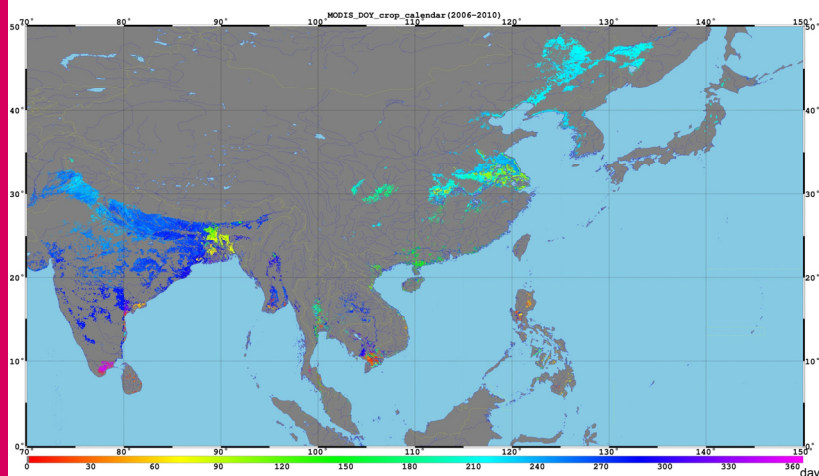
Our lab's mission is to develop the methodology to measure and evaluate the environmental changes of city, agricultural area and forested area focused on human activities in Asian countries. Those researches are carried out under international technology collaboration and the derived systems are implemented and transferred to operational schemes in ASEAN countries including Vietnam, Laos, Indonesia and Myanmar through APRSAF and JICA.



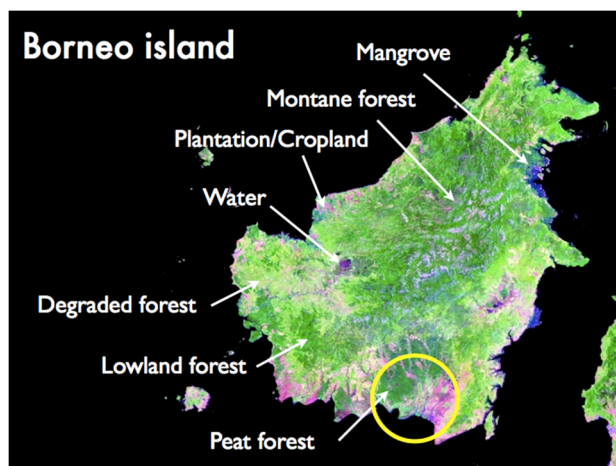
Global atmospheric environment map as indices of aerosol and angstrom exponent from MODIS Atmosphere Products (MOD04, MOD08)



Field survey of Paddy field and Mangrove in Sri-Lanka (Investigation items: Longitude Latitude, Air temperature, Relative air humidity, Soil pH, Beginning period of irrigation in paddy)



Cropping calendar of rice paddy field in Asia as a source of food from AMSR-E Land Surface Water Coverage (LSWC) and MODIS Normalized Differential Vegetation Index (NDVI)



Ecosystems in Borneo island as a world's largest tropical peat land using ALOS/PALSAR