

KAWAZOE LAB.

[Scoping Future from Architectural Viewpoint]

Institute of Industrial Science

<http://www.kwz.iis.u-tokyo.ac.jp>

Architectural Design / Landscape & Culture

Department of Architecture

Scoping Future from Architectural Viewpoint

Architectural design approaches towards the future. It does not, however, aim to create only "new" things.

Where do we stand, and towards which direction are we moving?

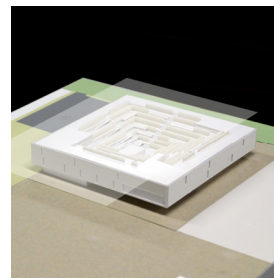
We aim to widen range of the question, in order to understand today, and make it as a lighthouse of the future.

We are a still young team, but everyday working on with the following researches and projects.

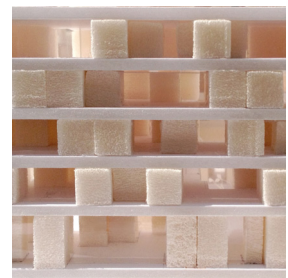
Locality & Universality



The Possibility of transferring PC technology to developing countries.

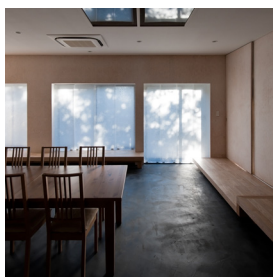


Knowledge Center
"the Valley of information"



Residence built up with students' individualities and their cultural exchanges.

Thinking architecture in dynamic local scenery



Regeneration of local culture by editing local materials.

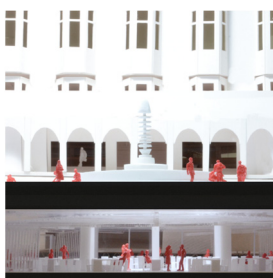


Sharing with various generations through the interview, the scenery of old castle town.

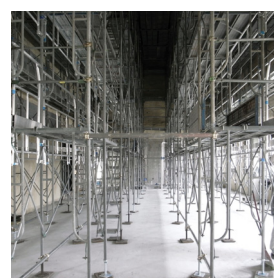


The space integrating architectural structure and equipment, created through the collaboration with local industry.

Time and Architecture



Creation of new knowledge and succession of scenery, through the integration of historical library and electronic library,



Conversion of uniformity into various research activities.



the memorial for 15882 people and the cherry forest.