



Center for Research on Innovative Simulation Software

[Introduction]

<http://www.ciss.iis.u-tokyo.ac.jp/>

Advanced research on simulation software

Since January 2008

Purpose and Main theme of CISS

To conduct R&D on the advanced and practical computational science simulation software needed for the 21th century, we are collaborating with researchers within and outside the university while responding to the needs of the industry.

- ◆ Conducting world-leading advanced research on simulation software
- ◆ Disseminating R&D results to society
- ◆ Strengthening the educational foundation for training human resources capable of developing and using simulation software

Center Director



Chisachi Kato, Professor



Nobuhiro Yoshikawa, Professor



Fumitoshi Sato, Professor



Marie Oshima, Professor



Shinsuke Kato, Professor



Toshio Hatada, Project Professor



Takahisa Ohno, Visiting Professor



Fujihiro Hamba, Professor



Yoshitaka Umeno, Associate Professor

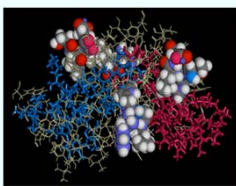


Yoshinori Shihara, Research Associate



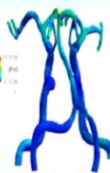
Katsuhiko Nishimura, Research Associate

Life Simulation



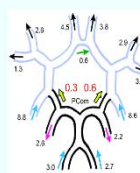
The computational model of PSRC. The special pair and the residues affected by pigments were drawn by stick and CPK models, respectively

SATO, F. Lab.

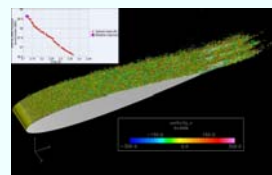


a) Wall shear stress distribution
b) Distribution of flow rates
Blood flow simulation of multi-scale circle of Willis considering the effects of peripheral vessels

OSHIMA, M. Lab.

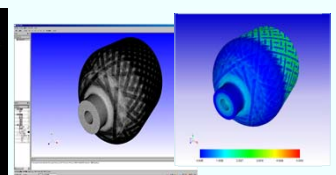


Multi-physics multiscale simulation



Plot showing the Pareto-set of optimal trade-off obtained for the serrated airfoil and a visualization of the vortical structures present around the airfoil

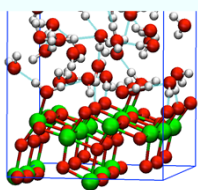
KATO, C. Lab.



Meso-mechanical strength evaluation of Filament Winding FRP Tank for Fuel Cell Vehicle

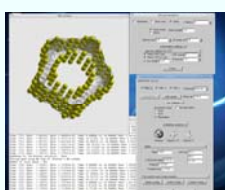
YOSHIKAWA, N. Lab.

Nano device simulation



Interfacial structures between photocatalytic materials and water: TiO₂/H₂O interface

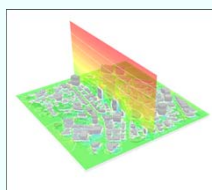
Ohno, T. Lab.



A GUI based simulator for radial corrugation of multi-walled carbon nanotubes

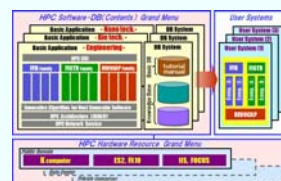
Umeno, Y. Lab.

Simulation System for urban Environment and Safety



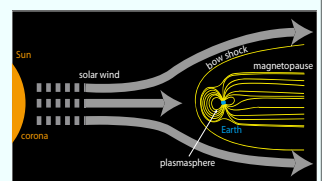
Hazardous Material Dispersion within City Blocks by means of Wind Flow Simulation

KATO, S. Lab.



Basic Structure and Application Scheme for Multipurpose HPC/PF

HATADA, T. Lab.



Solar wind and Earth's magnetic field

HAMBA, F. Lab.