



W. Takeuchi lab

[Monitoring human activities and its environmental impacts in Asia and international technology collaboration]

Department of human and social systems

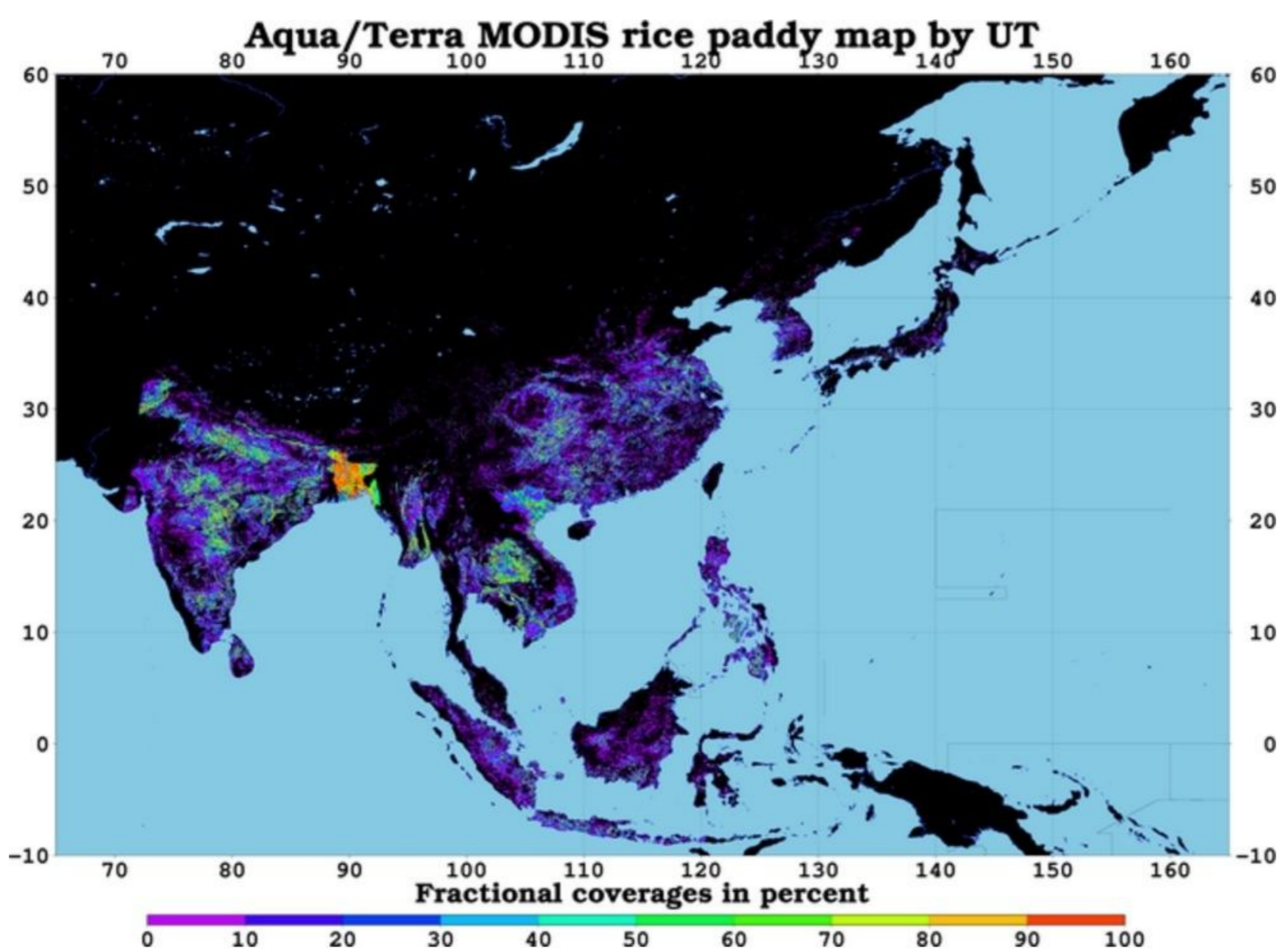
<http://stlab.iis.u-tokyo.ac.jp/>

Remote sensing of environment and disaster

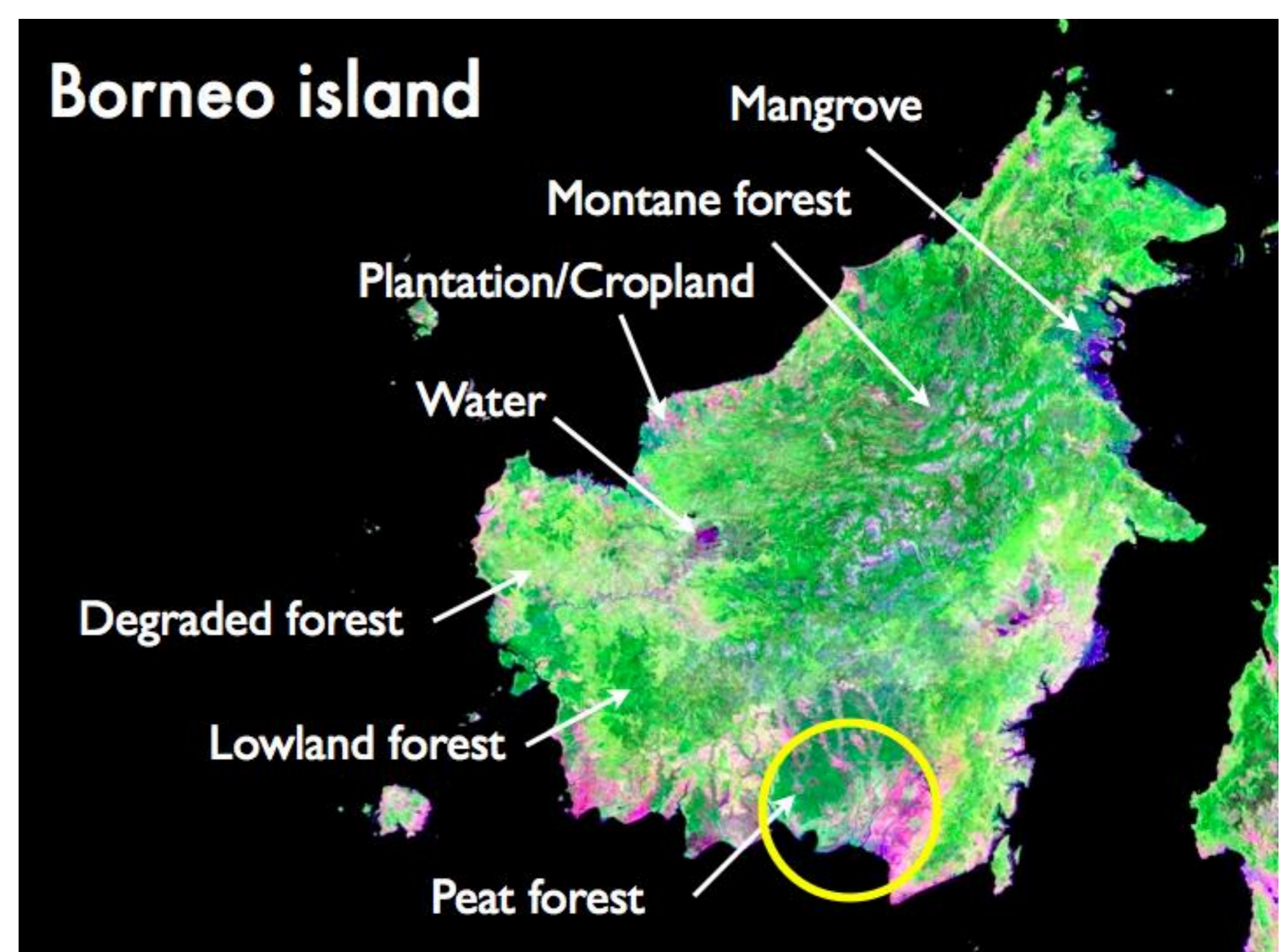
Department of civil engineering, faculty of engineering

Monitoring of human activities and its environmental impacts in Asia and international technology collaboration

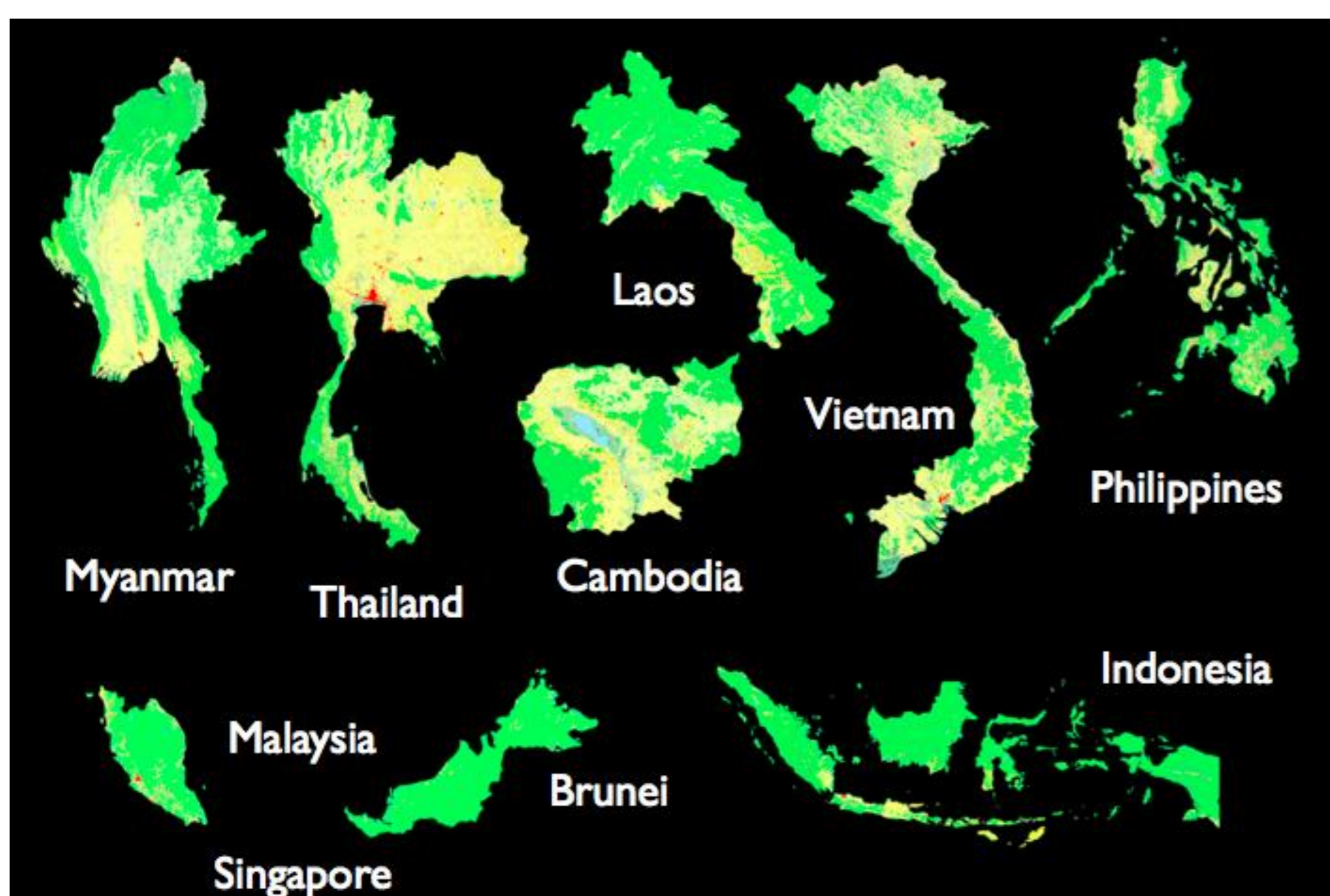
Our lab's mission is to develop the methodology to measure and evaluate the environmental changes of city, agricultural area and forested area focused on human activities in Asian countries. Those researches are carried out under international technology collaboration and the derived systems are implemented and transferred to operational schemes in ASEAN countries including Vietnam, Laos, Indonesia and Myanmar through APRSAF and JICA.



Mapping of rice paddy field in Asia as a source of food and CH4



Ecosystems in Borneo island as a world's largest tropical peatland



Land use and land cover map of Asia from satellite remote sensing



Field survey of forest ecosystems in Vietnam