

NAKANO LAB.

[Seismic Damage Estimation of RC Building Structure]

Department of Fundamental Engineering

<http://sismo.iis.u-tokyo.ac.jp/>

Earthquake Engineering / Structural Engineering

Faculty of Engineering,
Dept. of Architecture

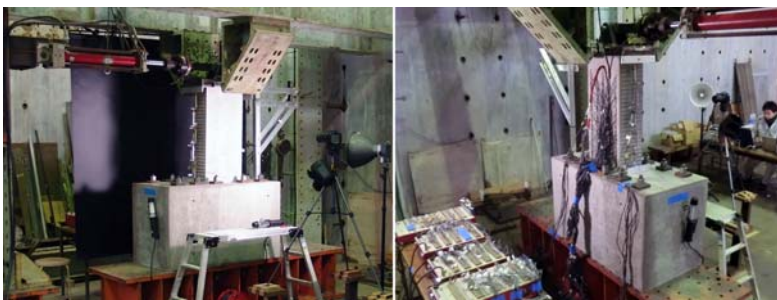
Damage Estimation of Reinforced Concrete Building Structures During Earthquakes

On the subject of STRUCTURAL ...

MEMBER : Seismic Crack Length Evaluation of RC Members

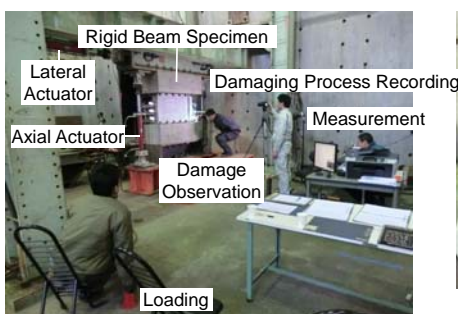
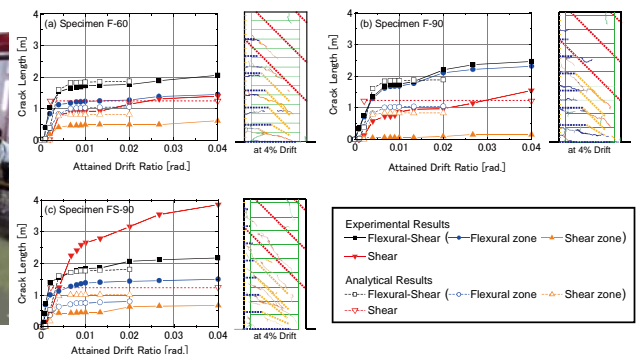
FRAME : Seismic Performance Evaluation of RC Frames with URM Infill

SYSTEM : Changes of the Vibrational Characteristics due to Seismic Retrofit

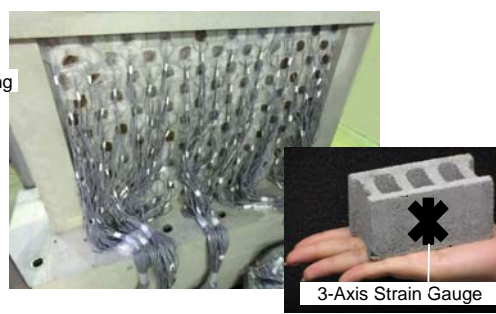


(a) Front view of the specimen FS-90 (b) Rear view of the specimen FS-90

Test Setup

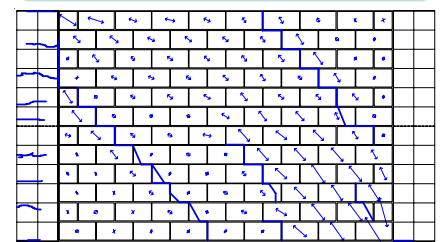


Test Setup



3-Axis Strain Gauges of CB Wall

Investigation of seismic capacity (Diagonal strut mechanism · Shear strength)



Principal Compressive Strain of CB Wall

Changes of the Vibrational Characteristics in... 2008: original design
2010: under construction
2011: seismic retrofit



Susono city hall, Shizuoka



seismic isolation and oil damper

