



LIMMS

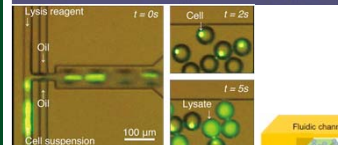
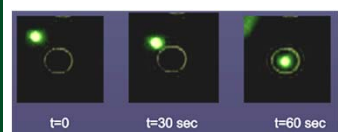
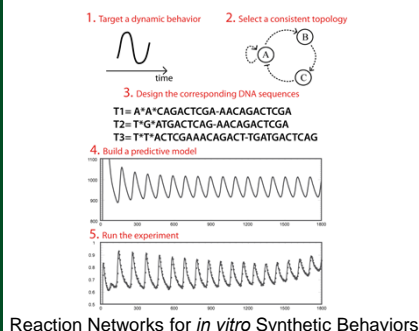
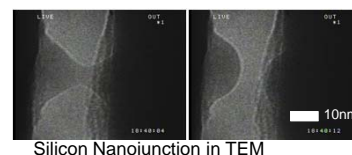
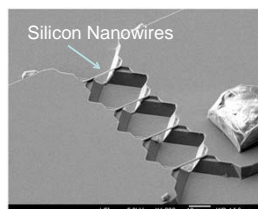
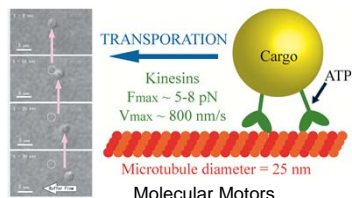
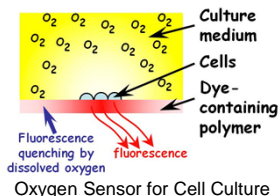
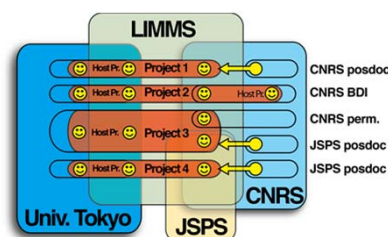
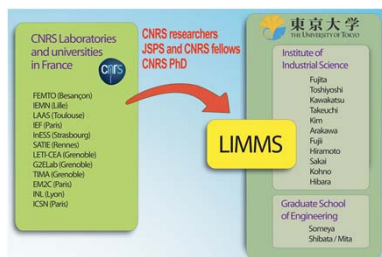
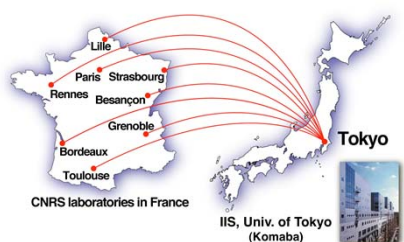


Laboratory for Integrated MicroMechatronic Systems

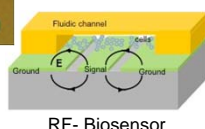
<http://limmshp.iis.u-tokyo.ac.jp/>

LIMMS: A joint laboratory between France and Japan

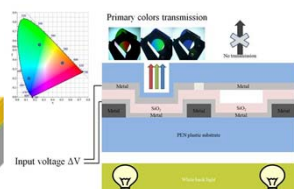
LIMMS is a joint research unit between CNRS (Engineering Institute) and IIS established in 1995. LIMMS welcome CNRS researchers, post doctoral fellows supported by JSPS and CNRS, and PhD students. Since 1995, more than 90 researchers were hosted in IIS for period longer than 2 years. Scientific policy is based on 3 main axis.



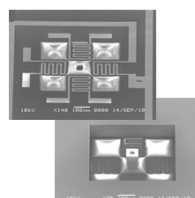
Microfluidics



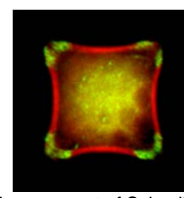
RF-Biosensor



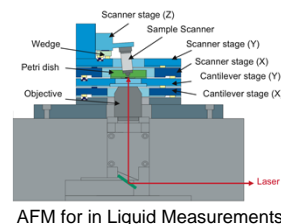
Large Area MEMS on Flexible Film



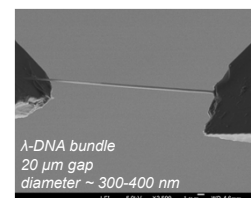
Air-jet Micromanipulator



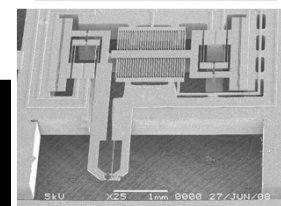
Measurement of Subcellular Contractile Structure



AFM for in Liquid Measurements



λ-DNA bundle 20 μm gap diameter ~ 300-400 nm



Silicon Nanotweezers