

SAWADA LAB.

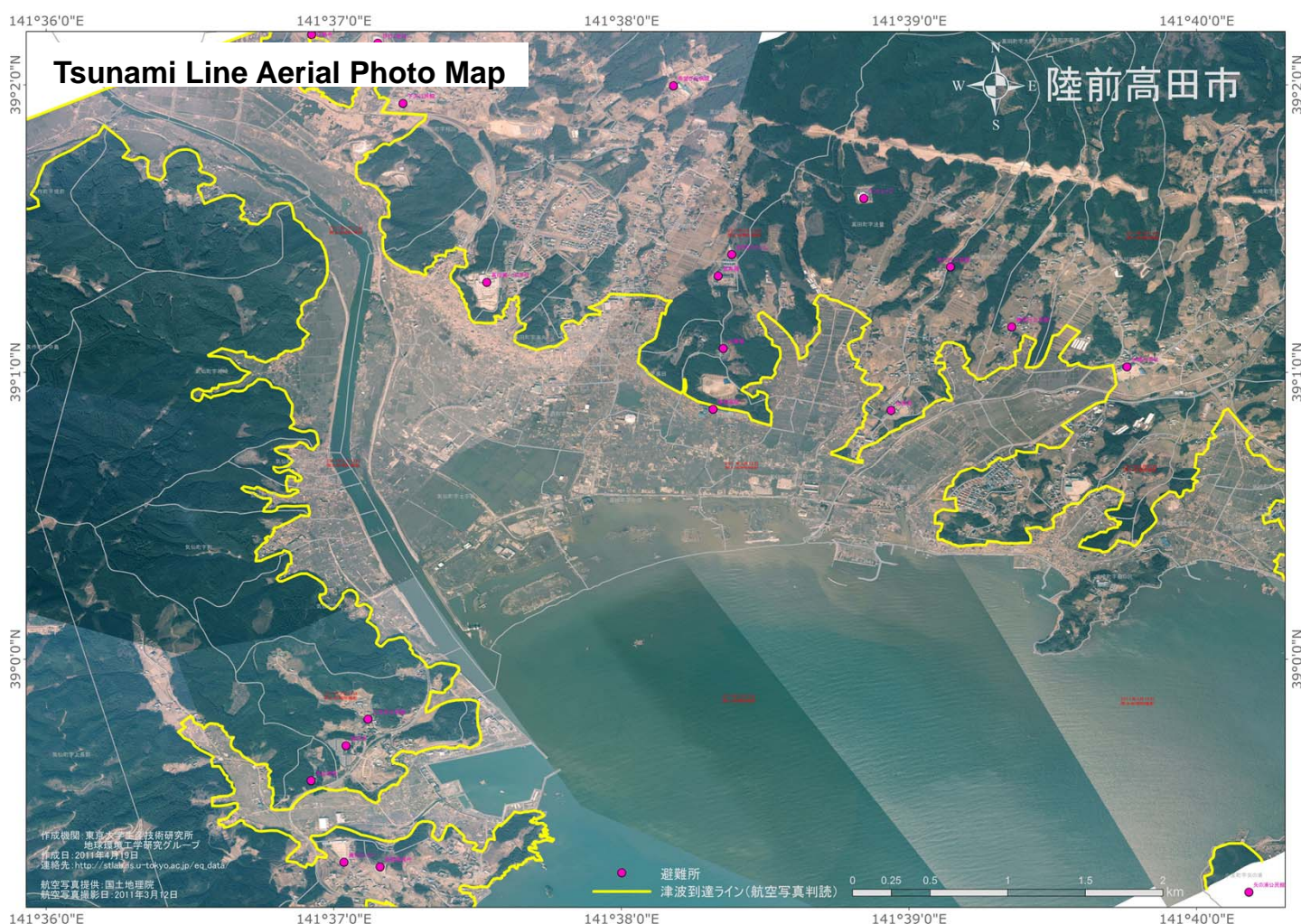
[Global Environment and Disaster Monitoring]

International Centre for Urban Safety Engineering (ICUS)

<http://stlab.iis.u-tokyo.ac.jp/>

Graduate School of Engineering, Civil Engineering

Tsunami Disaster Mapping for the Great East Japan Earthquake



Conversion of orthophoto to a Google Earth layer

- Post-disaster aerial orthophoto by GSI (jpg, jgw format)
- Conversion of image format and map projection
- Post-disaster aerial orthophoto projected into the world geodetic system (png, kml format)

Interpretation and digitizing of inundated area

- Post-disaster aerial orthophoto, pre-disaster satellite image, inundation map by GSI and press information
- Interpretation and digitizing on Google Earth
- Precise inundation line (kml, shp format)

Preparation of other GIS data

- Boundary of the township and blocks, population, shelter point, and elevation data
- Conversion of format
- GIS data for damage detection and reconstruction planning (kml, shp format)

Development of tsunami line aerial photo map

- Overlay of post-disaster aerial orthophoto, inundation line, boundary data, and other GIS data
- **1:10,000 scale tsunami line aerial photo map (at A1 print)**
- **Distributing png format file**

http://stlab.iis.u-tokyo.ac.jp/eq_data/index_e.html