

Akira Fujii LAB.

[Research on Architectural and Urban Space]

Department of Human and Social Systems

Urban Morphology

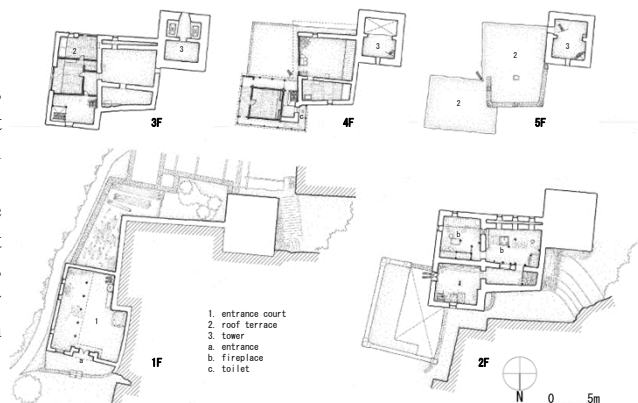
Architecture

Survey on Traditional Dwellings

To date, field studies of more than 600 traditional villages and dwellings throughout the world have been conducted. The characteristics of various dwelling cultures are being examined by comparing the spatial compositions.

Survey in Sichuan (2009)

China has 56 ethnic groups officially prescribed. Most of them have typical dwellings proper to each. RGalrong-Tibetan are noted for high towers built of stone. The sharp edges of towers show the quality of their technologies in masonry.



rGalrong-Tibetan in Sichuan Province

Architectural Design

Xianguan Township Central Primary School

For the reconstruction of the Sichuan Earthquake in 2008, we designed *Xianguan Township Central Primary School*. Thanks to the support from around the world and Chinese government, it became the first primary school completed and came into use after the disaster. The project features architectural style of Qiang, the small ethnic group in the area. Children of Qiang stay and study here. This is one of the practical results of our field surveys on traditional dwellings throughout the world.



Xianguan Township Central Primary School (2009)