

LEAP

Large-Scale Experiment and Advanced-Analysis Platform

- Comprehensive and innovative research is being carried out by combining advanced data analysis, modeling, and simulation as well as large-scale experiments.
- LEAP is operated as a basic platform that widely supports the activities of IIS in cooperation with other departments in Kashiwa Campus.

Large-Scale Experiment and Advanced-Analysis Platform

5-1-5 KASHIWANOHA KASHIWA, CHIBA 277-8574, JAPAN (Kashiwa Campus)

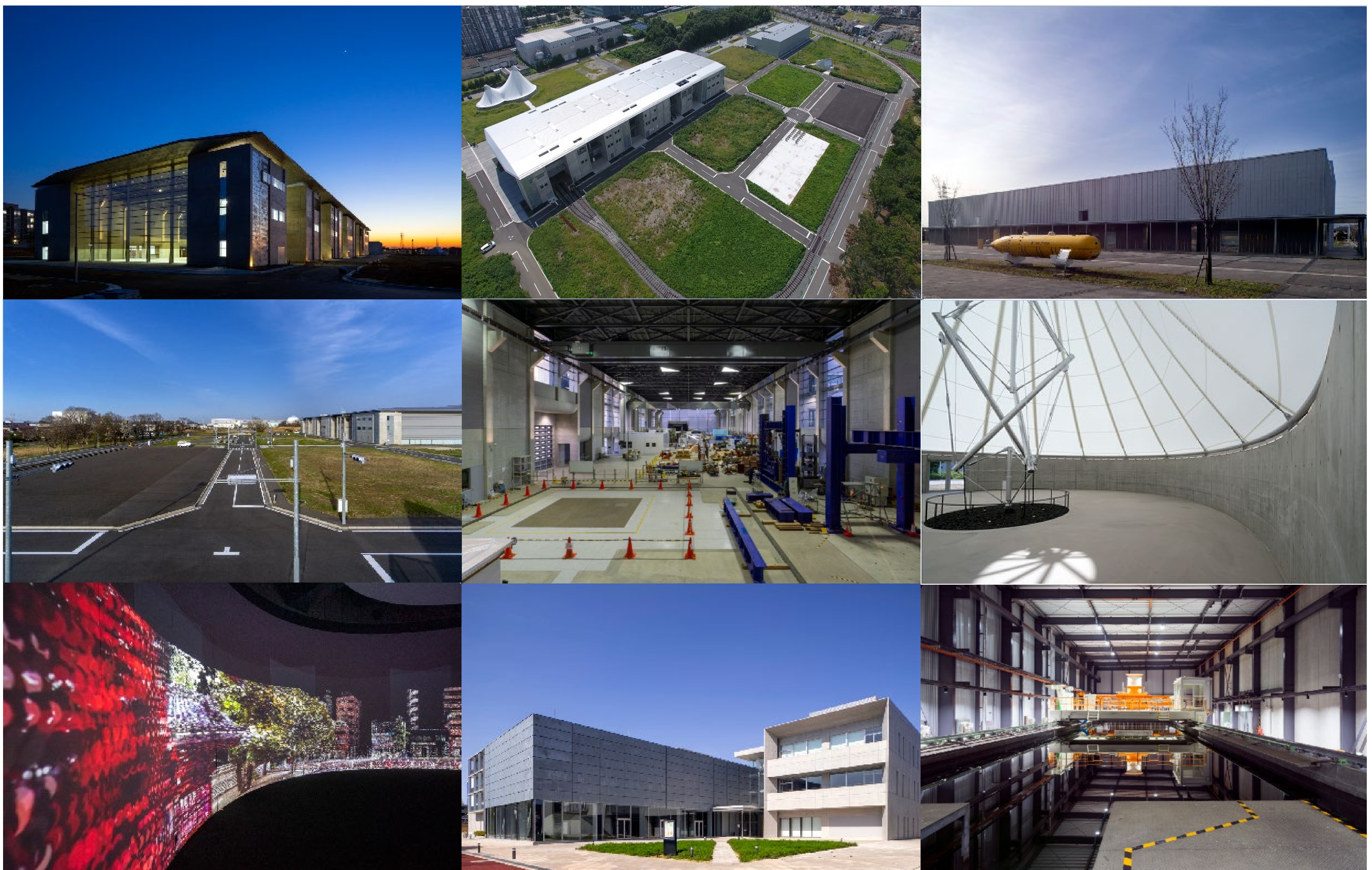
<https://www.iis.u-tokyo.ac.jp/en/about/facilities/chiba/>

【About LEAP】

In the Kashiwa area, the faculty members of the Large-Scale Experiment and Advanced Analysis Platform (LEAP) mainly use the facilities on the Kashiwa Campus. Five fully engaged members run the laboratories on the Kashiwa Campus. Nine concurrent members and faculty members belonging to the research departments and centers of the Komaba Research Campus also use the facilities of the Kashiwa Campus. About 30 faculty members in total carry out research activities with about 65 research subjects in 2022.

【Research】

- Ocean exploration, utilization and environmental conservation
- Engineering to support a disaster-resilient society
- Intelligent transportation system
- Material, information circulation, diffusion and global environment
- Development of new research fields that combine large-scale experiments and advanced data analysis



Research and Testing Complex I

Experiment Field

4D Lab
(Kashiwa 2 Cooperation Hub)

Aerial view of IIS area in Kashiwa Campus

Large Space Laboratory
(Research and Testing Complex I)

Kashiwa 2 Cooperation Hub

Research and Testing Complex II

White Rhino II

IIS Ocean Engineering Basin
(Research and Testing Complex II)

