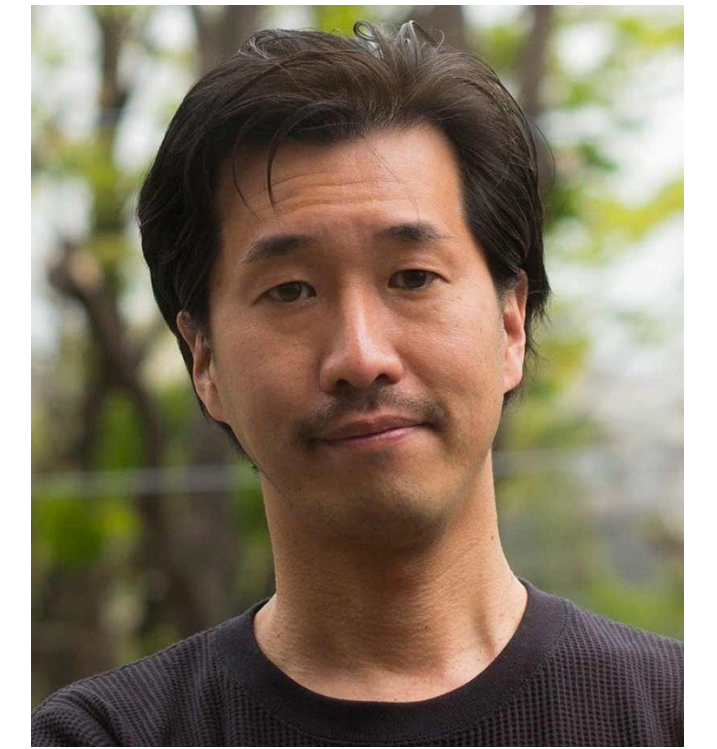


Kawazoe LAB.

[For Next of City]



Department of Human and Social Systems

Architectural Design Theory

Department of Architecture,
Graduate School of Engineering.

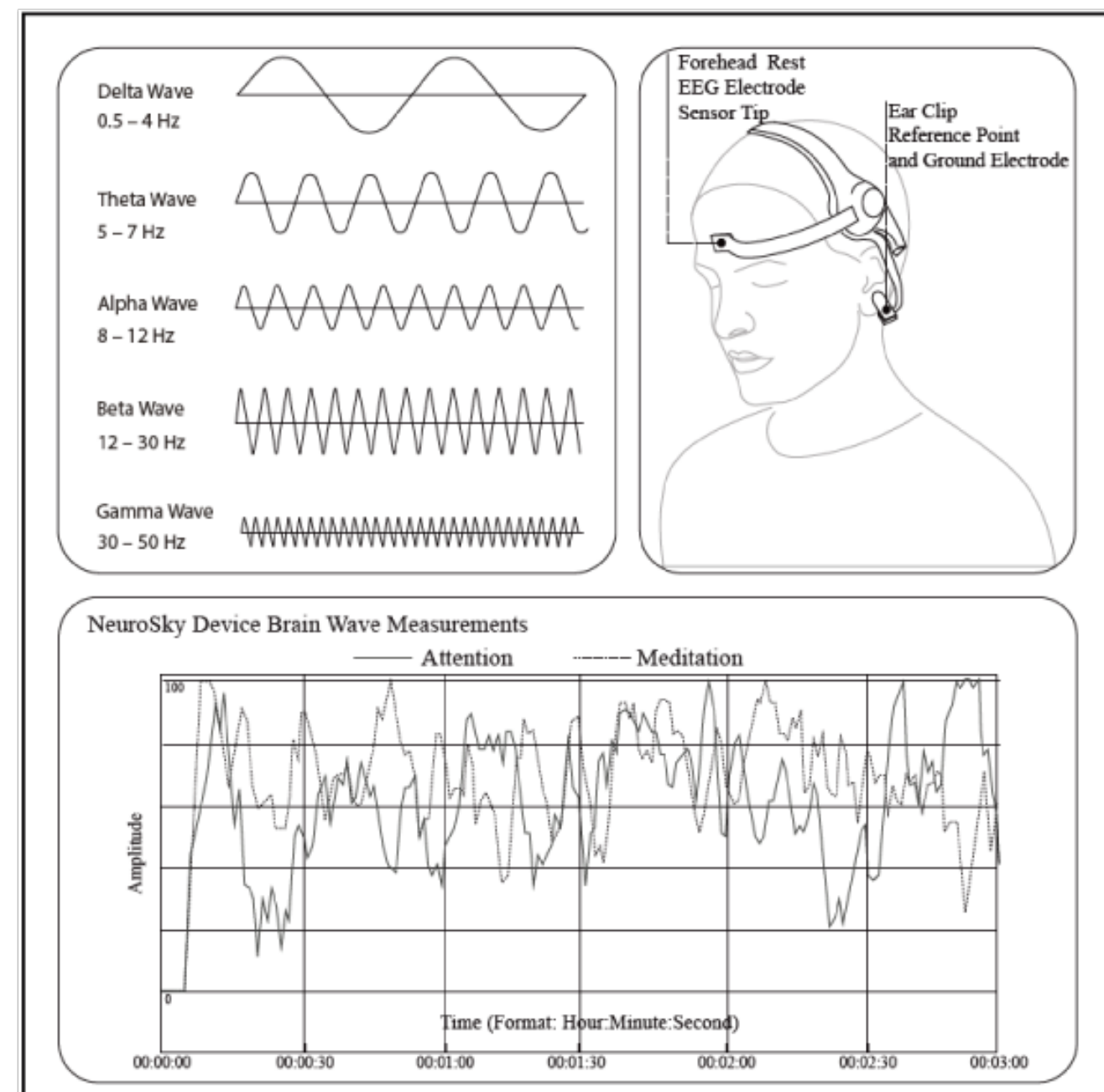
<http://www.kwz.iis.u-tokyo.ac.jp/>

We have practiced various architectural designs as well as constructing theories about architectural forms and spaces.

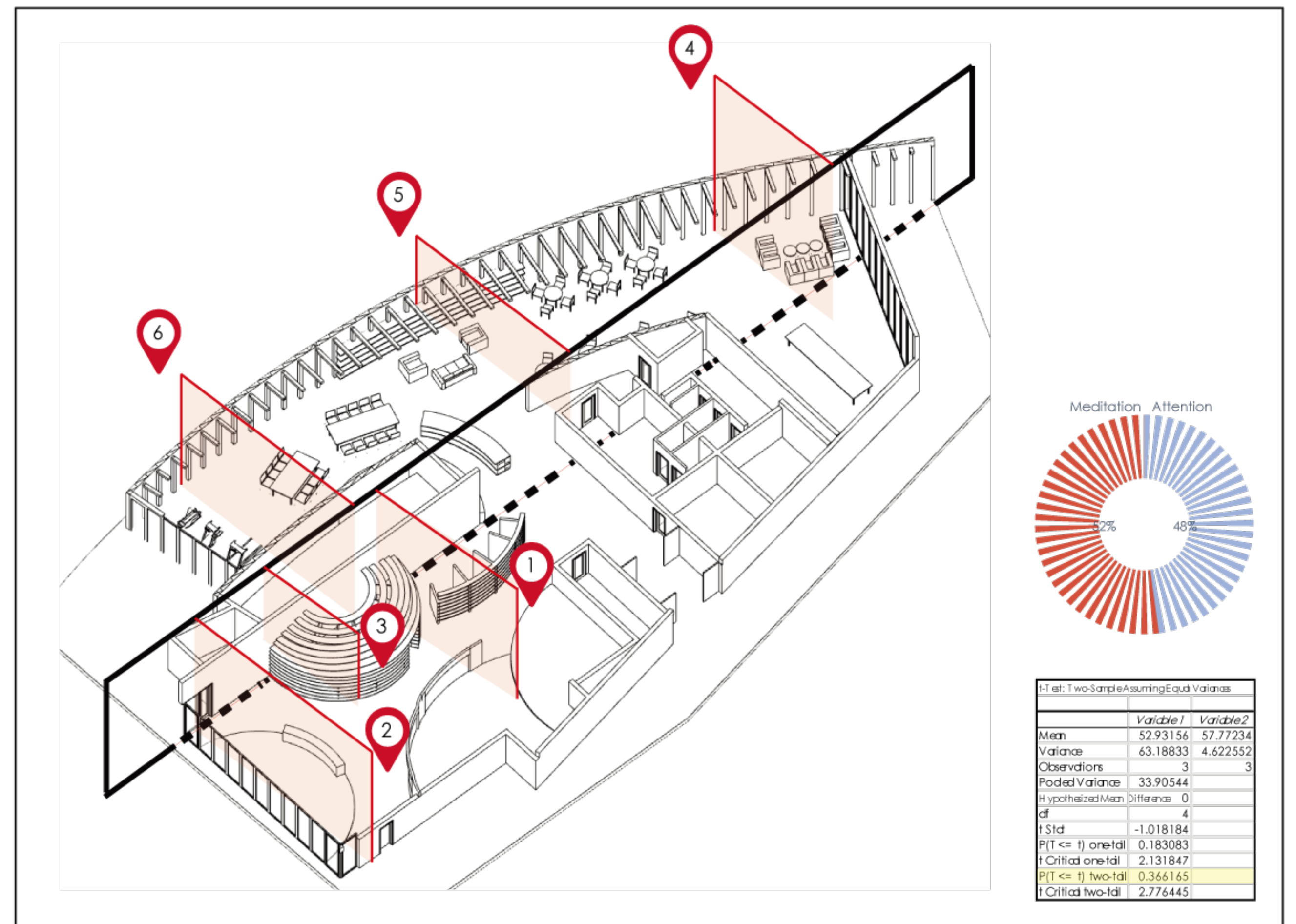
In addition, we have set up a branch office in Kada, a small fishing village in Wakayama prefecture, and researchers have been trying to regenerate the region while staying as a member of the local community for a long time.

Recently two new projects have started. One is to establish a method for measuring architectural space using brain waves and to propose a new architectural design method that applies that technology.

BRAIN WAVE MEASUREMENT



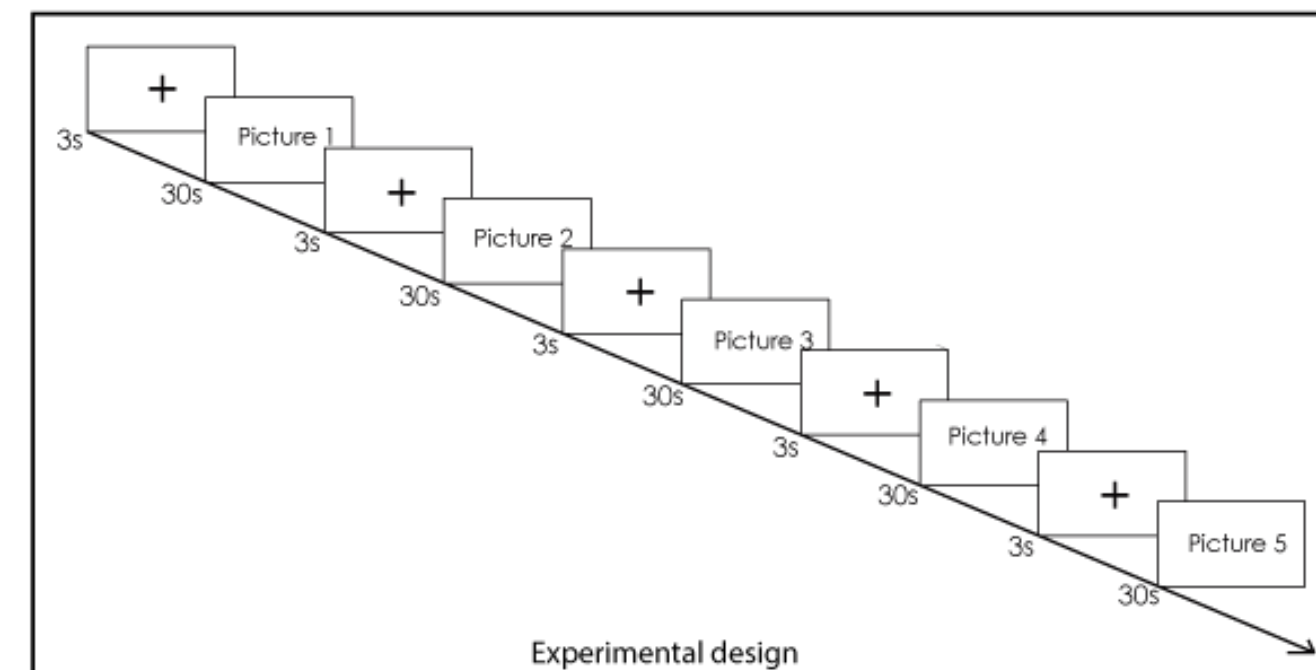
ARCHITECTURAL PARAMETERS



LABORATORY VS. REAL ENVIRONMENT



EXPERIMENTAL DESIGN



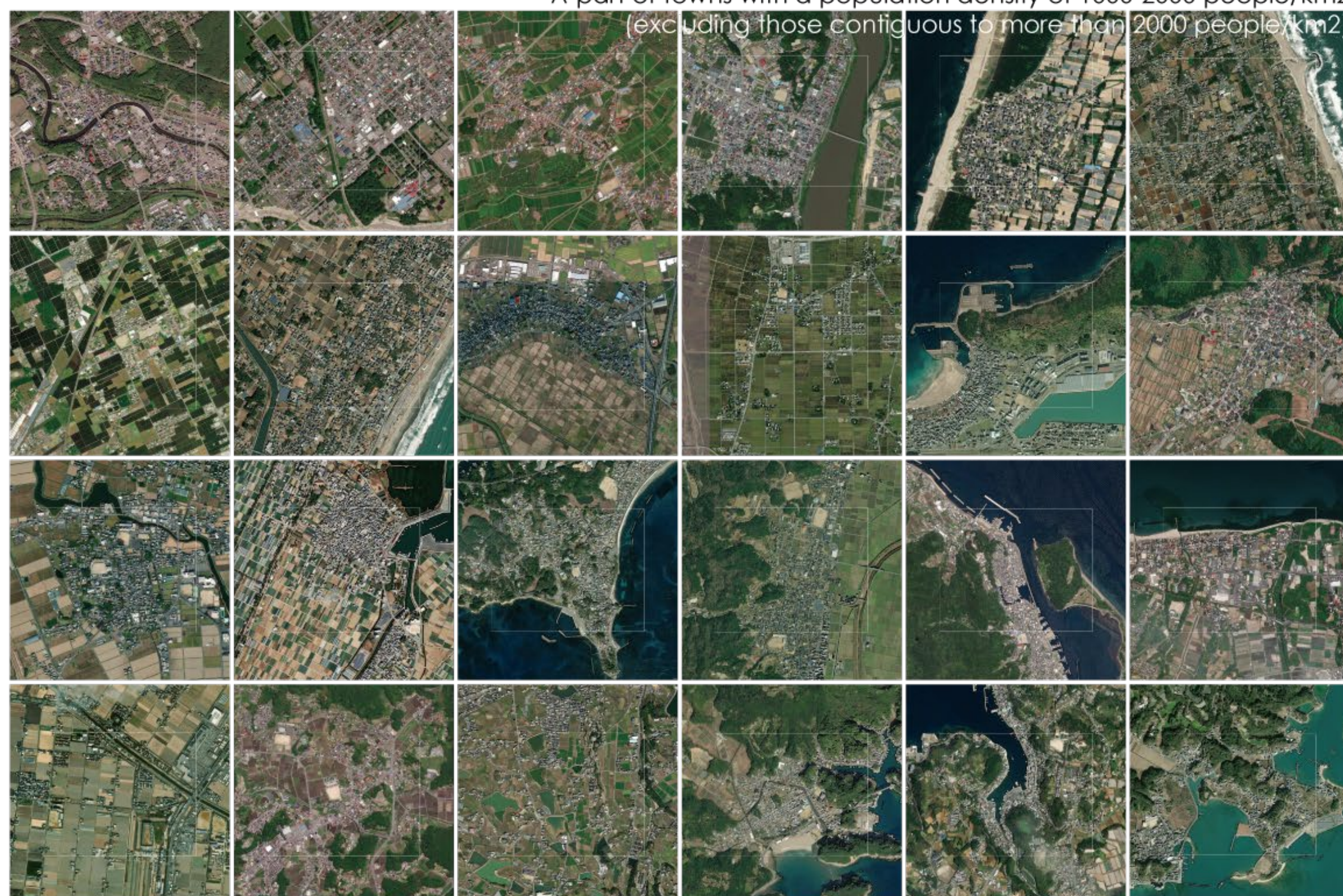
EXPERIMENTS



Neuro-architecture

Low-density Landscape

A part of towns with a population density of 1000-2000 people/km² (excluding those contiguous to more than 2000 people/km²)



Birdeye's view of Fudōdō, Kujūkuri Town



Landscape of Fudōdō, Kujūkuri Town



The other is to focus on the society and landscape of low-density towns with a population of 1,000 to 2,000 people/km² in order to envision a new sustainable society that differs from the conventional urban society based on high density, and to construct a methodology for regional regeneration. We are thinking about what is possible for architecture for the society.