

# Center for Integrated Underwater Observation Technology

## [Evolution of Studies on Underwater Technology]

Center for Integrated Underwater Observation Technology

Applied Sensing for Deep-sea Resources Exploration

Graduate School of Frontier Sciences, Dept. of Ocean Technology, Policy and Environment

Graduate School of Engineering, Dept. of Systems Innovation

<http://seasat.iis.u-tokyo.ac.jp/>

## Evolution of Studies on Underwater Technology

**A**ctual **B**enefit, **C**reation and **D**iscovery, **E**xploration of **F**uture

Rheem Lab. - Ocean Environmental Engineering

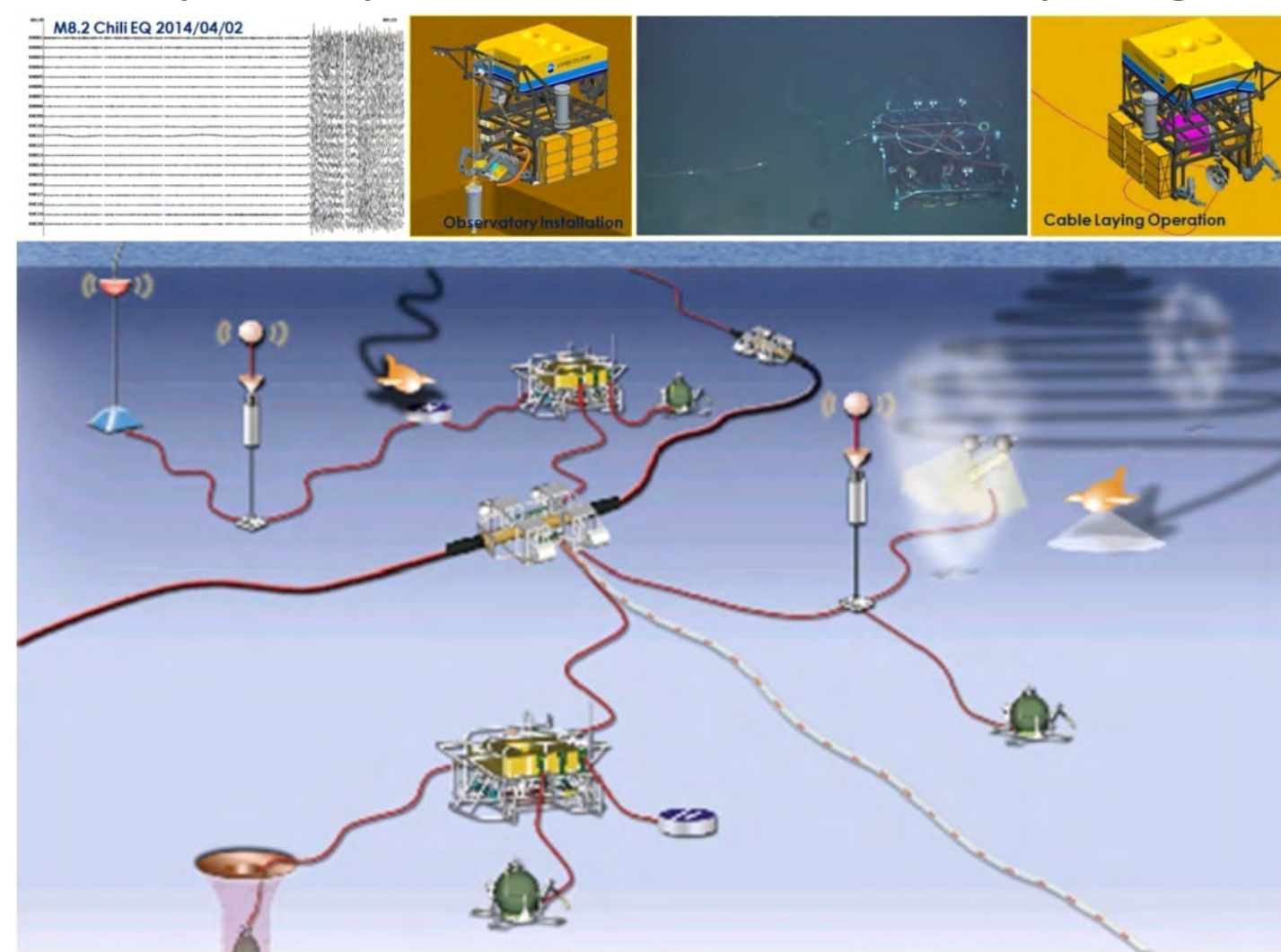
Kawaguchi K. Lab.

Kitazawa Lab. - Marine Ecosystem Engineering

Multidisciplinary Seafloor Observatory Engineering



Maruyama Lab.  
Ocean Renewable Energy

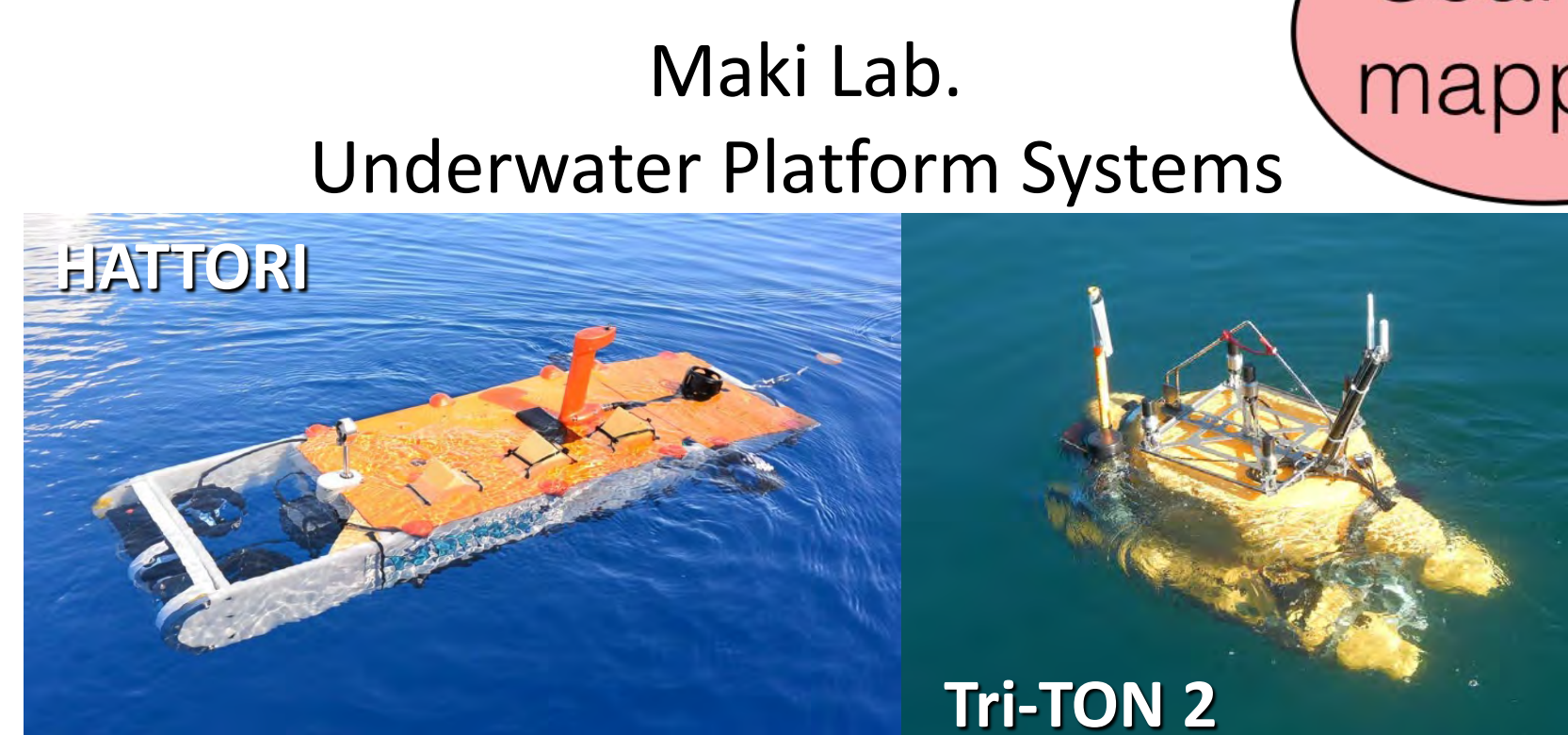


Controllable depth cage

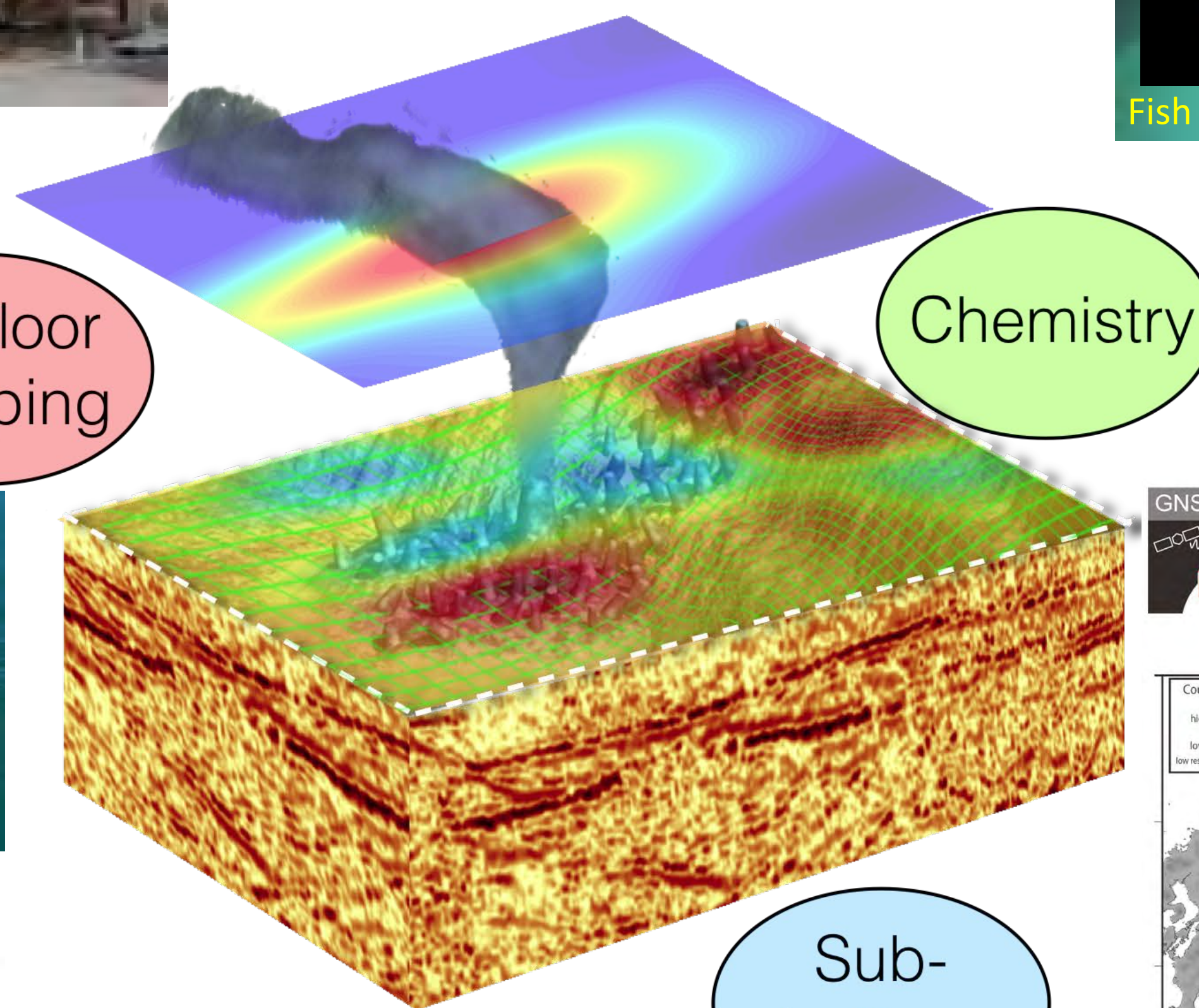
WHzer (Wave Harmonizer)

Automated net-hauling system

Fish monitoring system



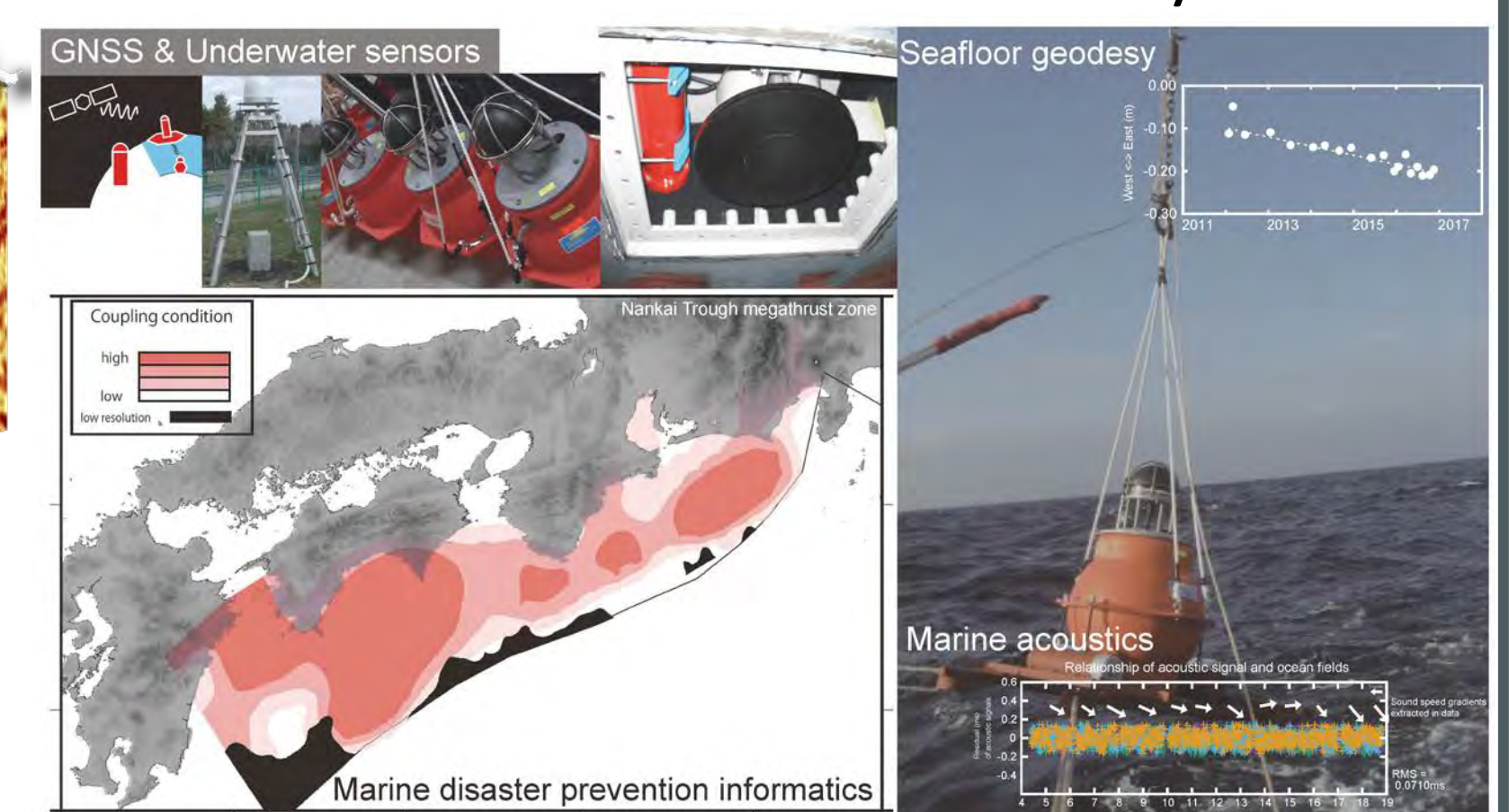
Maki Lab.  
Underwater Platform Systems



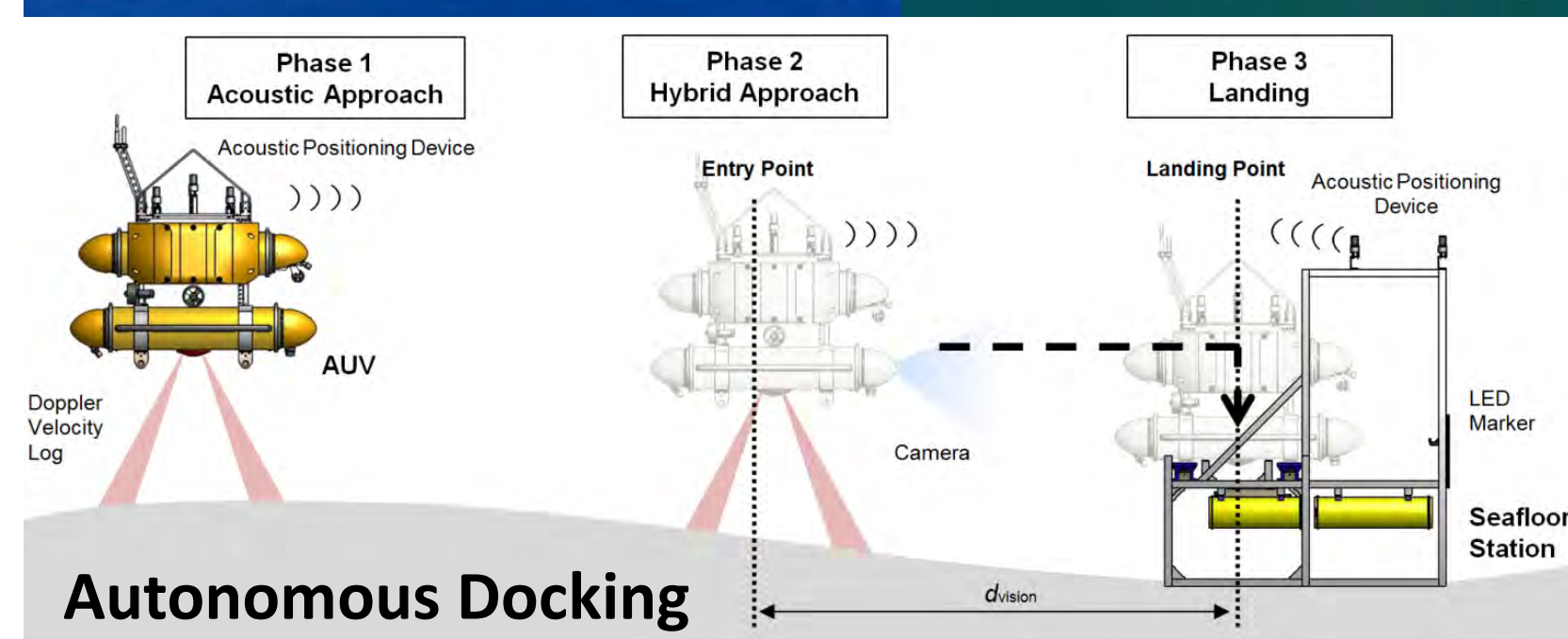
Seafloor mapping

Chemistry

Sub-bottom

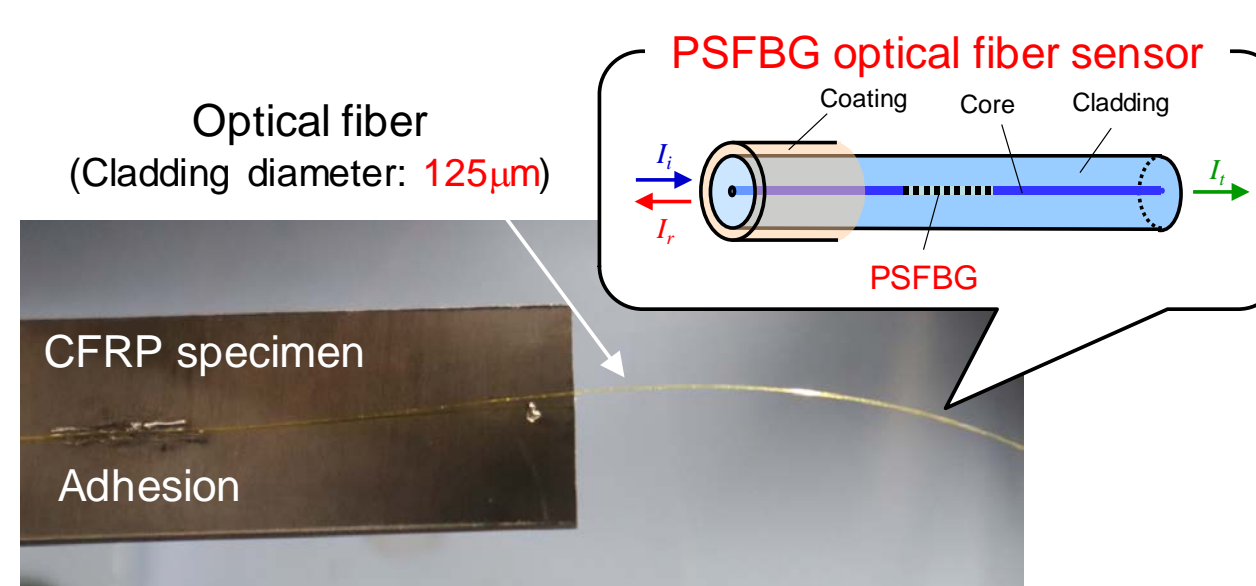


Yokota Lab.  
Underwater Information System

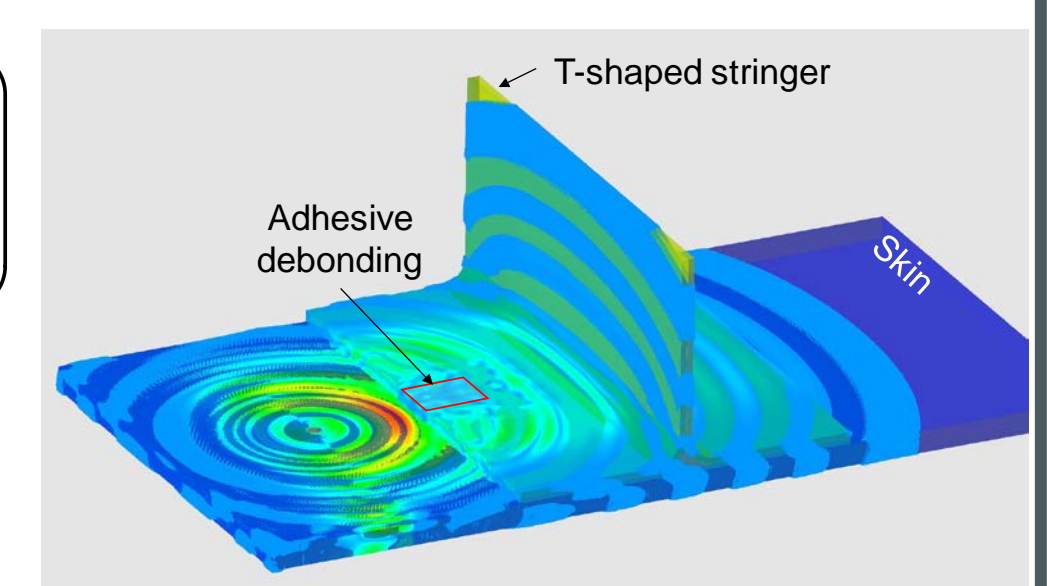


Autonomous Docking

Hasegawa Lab.  
Interfacial Transport Engineering

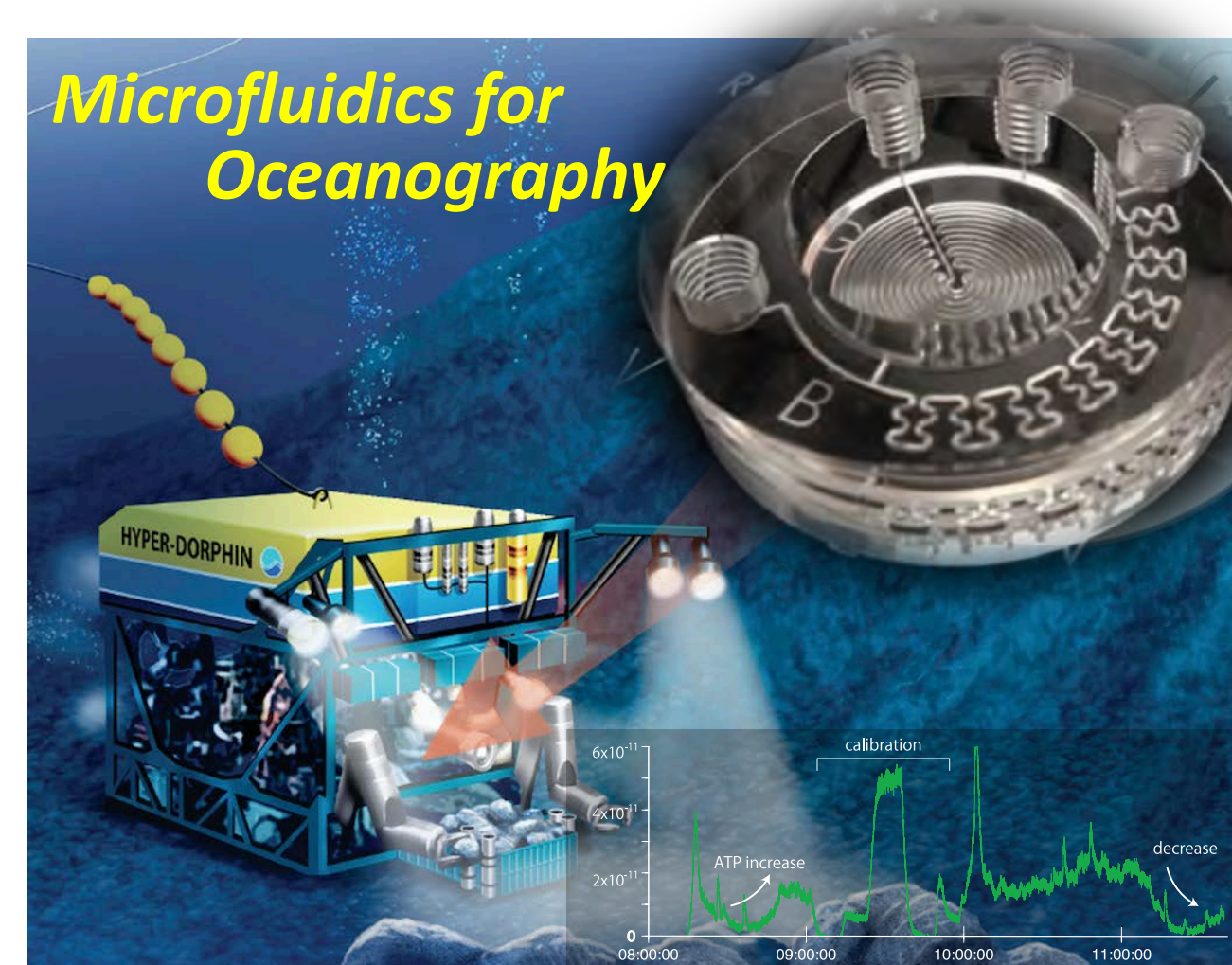


Optical fiber ultrasonic sensor for structural health monitoring

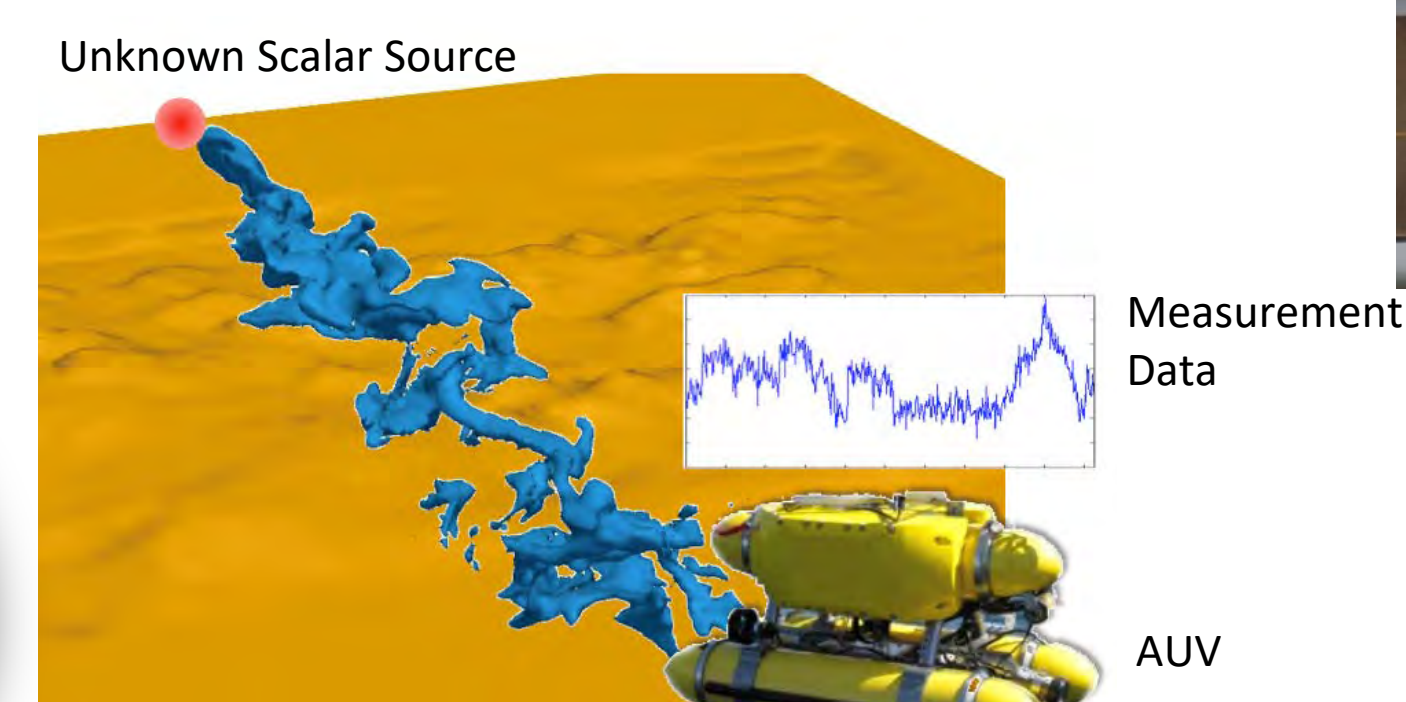


Ultrasonic damage detection in composite structures

Fukuba Lab.  
Multi-modal Ocean Sensing Systems



Microfluidics for Oceanography



Estimation of Scalar Field through Integration of Measurement Data into Computational Fluid Dynamics

Okabe Y. Lab. - Structural Health Diagnostics

Thornton Lab. - Underwater Photonics

