

H. Toshiyoshi LAB.

[MEMS / NEMS]

Centre for Interdisciplinary Research on Micro-Nano Methods

Micromachine System Engineering

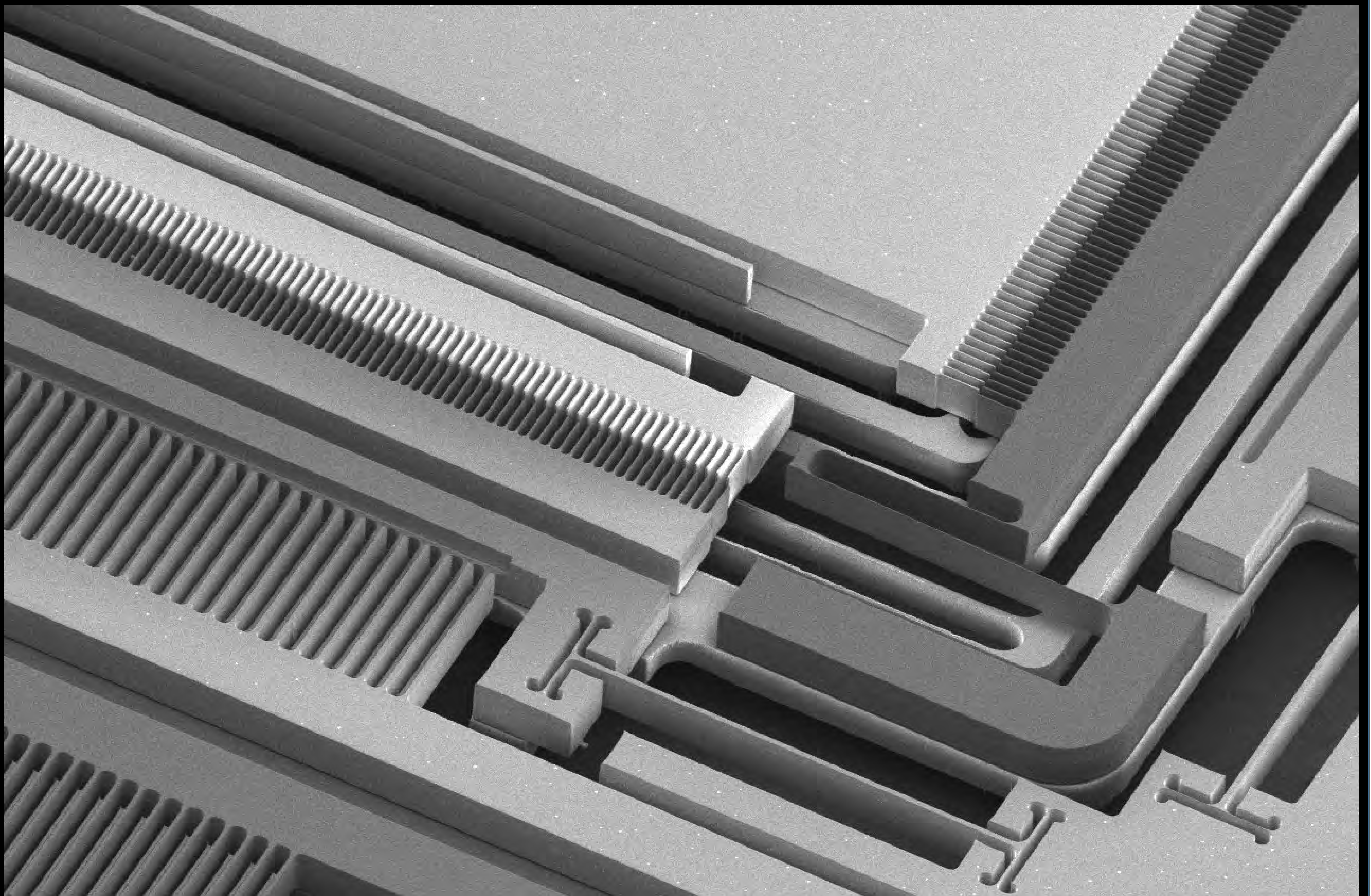
Department of Electrical Engineering and Information Systems (EEIS)

Department of Advanced Interdisciplinary Studies (AIS)

<http://toshi.iis.u-tokyo.ac.jp>

Use the force. Feel it.

MEMS Actuators and Sensors



MEMS/NEMS (micro/nanoelectromechanical systems) studies in our lab cover semiconductor-based micro sensors, actuators, energy harvesters, and beyond. Everyone who is interested in wide range of engineering layers including materials, processes, devices, systems, and IoT services is welcomed as a lab member, regardless of your status either in school or industry.

