

# KAMIJO Lab

## [Integrated Research of Location Service]

Center for Socio-Global Informatics

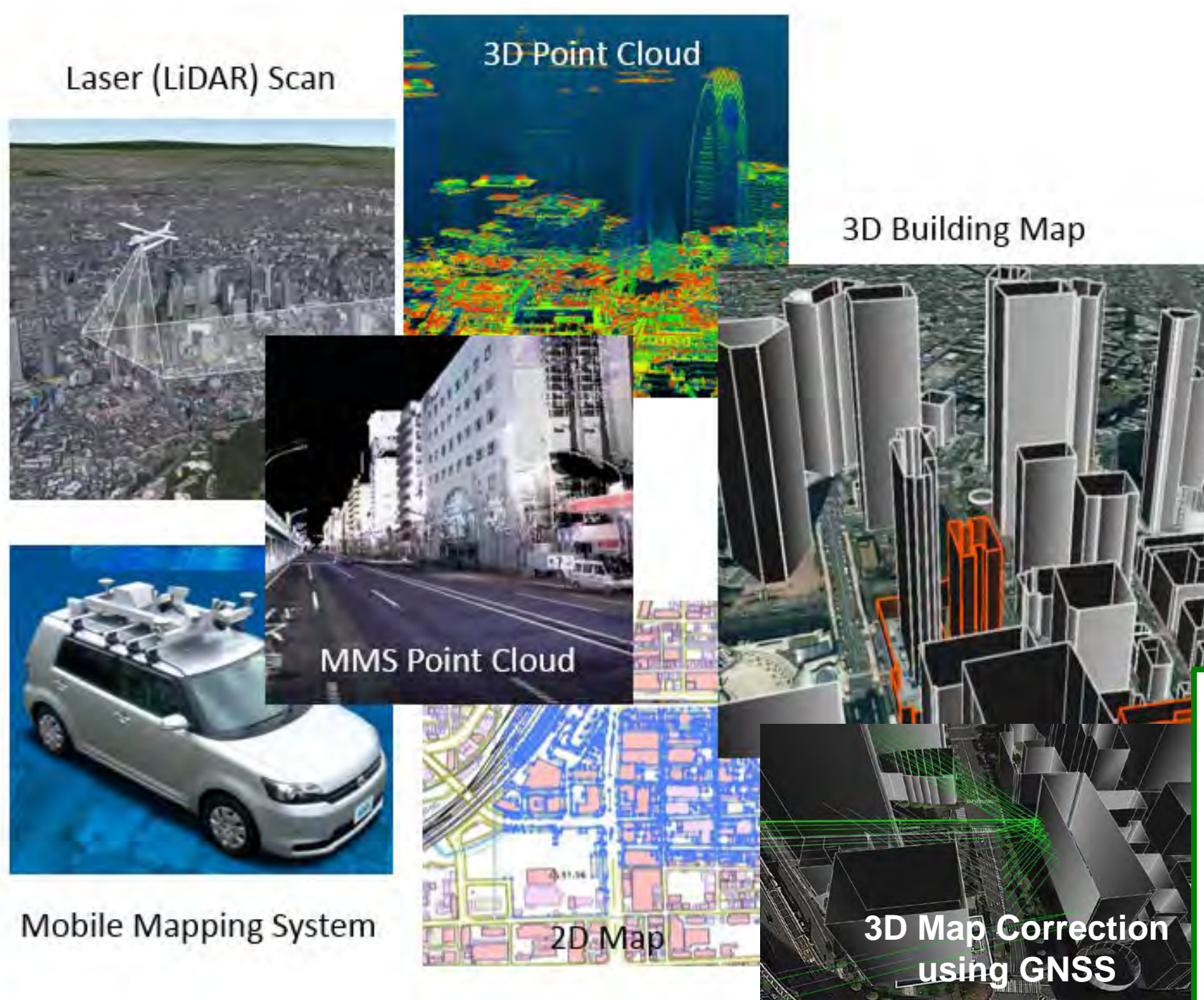
Applied Multimedia Information Processing

Information and Communication Engineering/Emerging design and informatics course

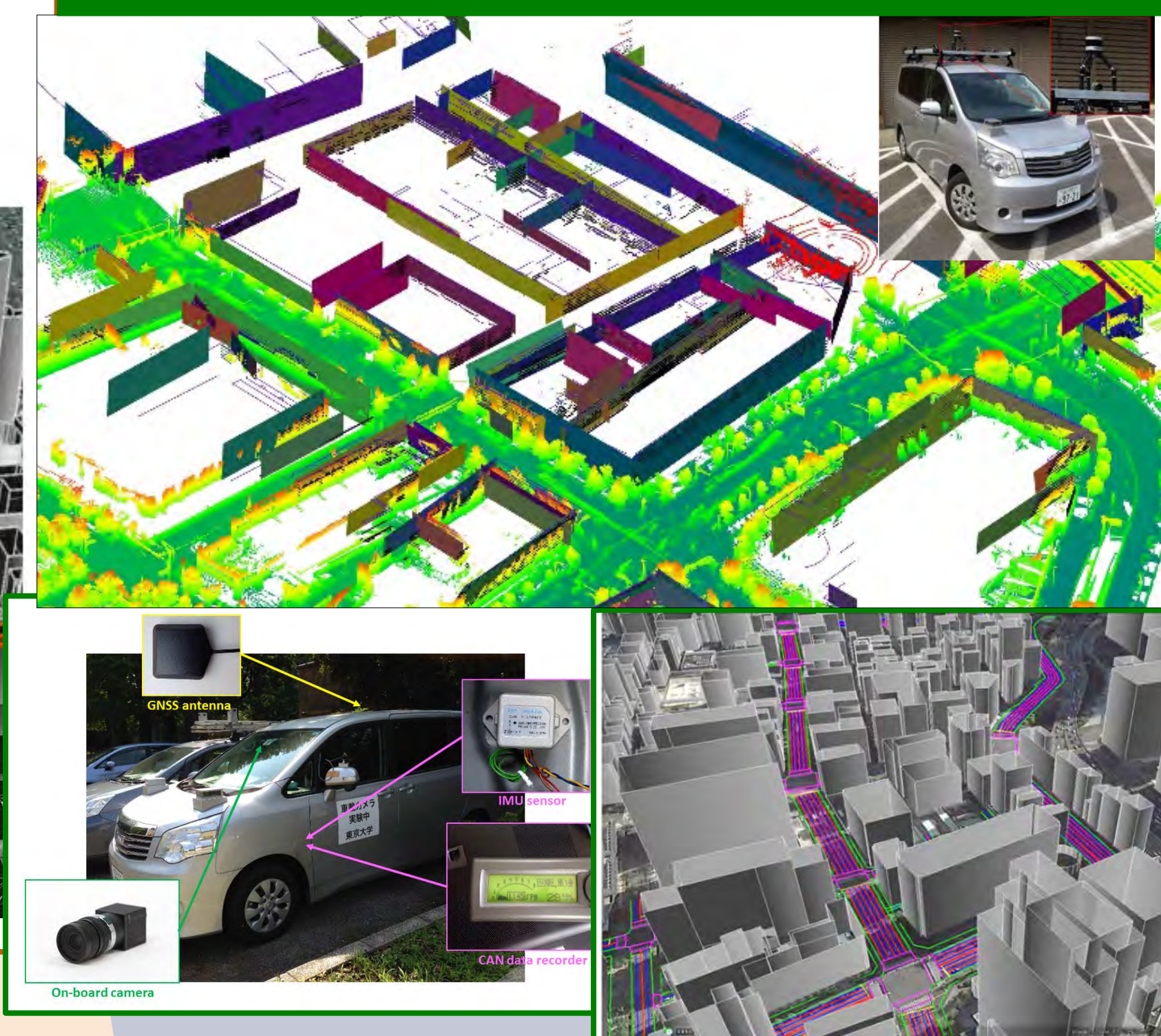
<http://kmj.iis.u-tokyo.ac.jp>

### Mapping and Localization

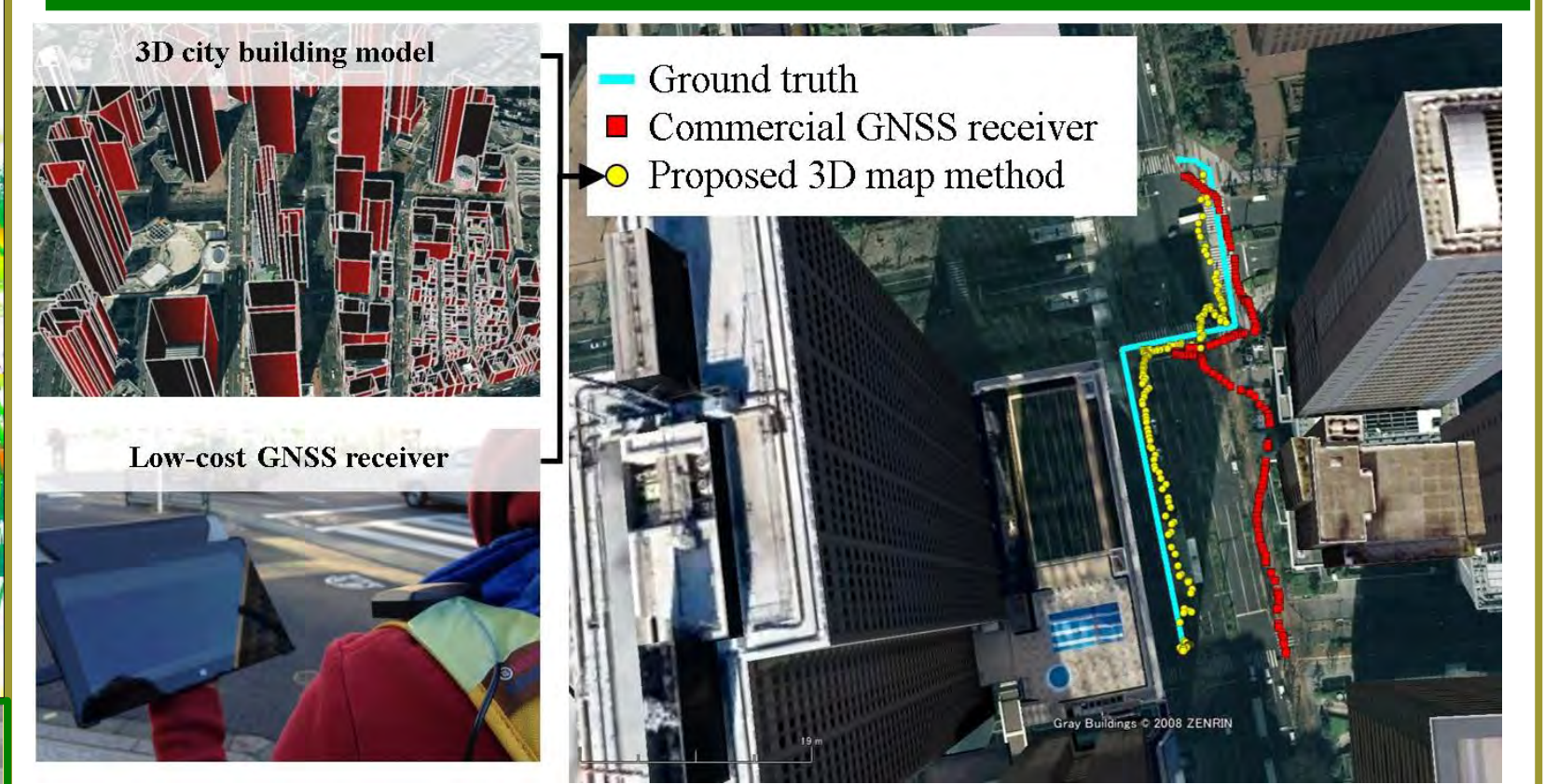
#### 3D Building Map Construction using Point Cloud Data, 2D Maps & GNSS signals



#### Vehicle Self-Localization in Urban City

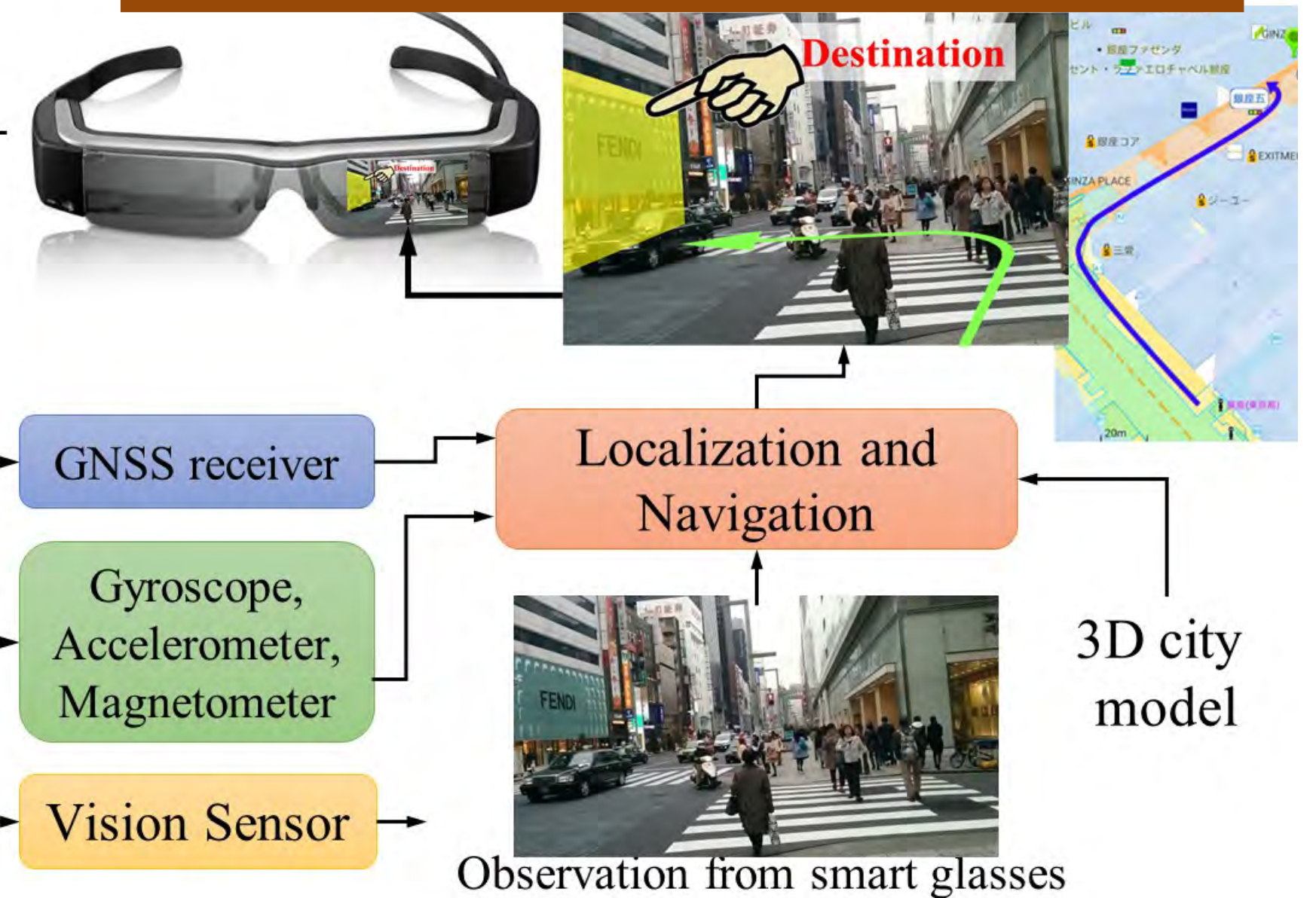


#### 3D City Building Model Based Positioning Method using Multi-GNSS in Deep Urban Canyons



### Portable and Wearable Smart Device

#### Pedestrian Navigation utilizing Wearable Devices\*

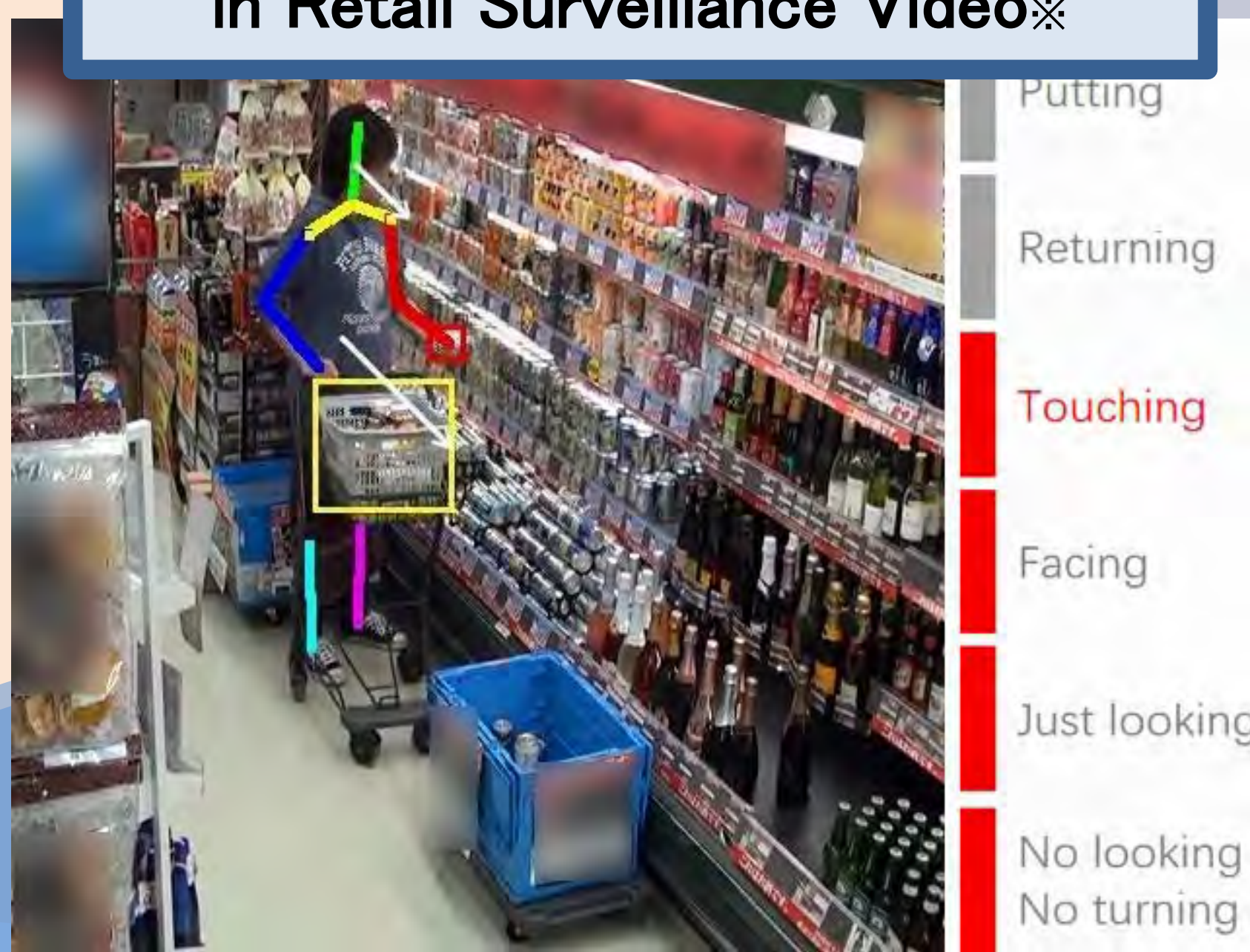


### Scene and Behavior Understanding

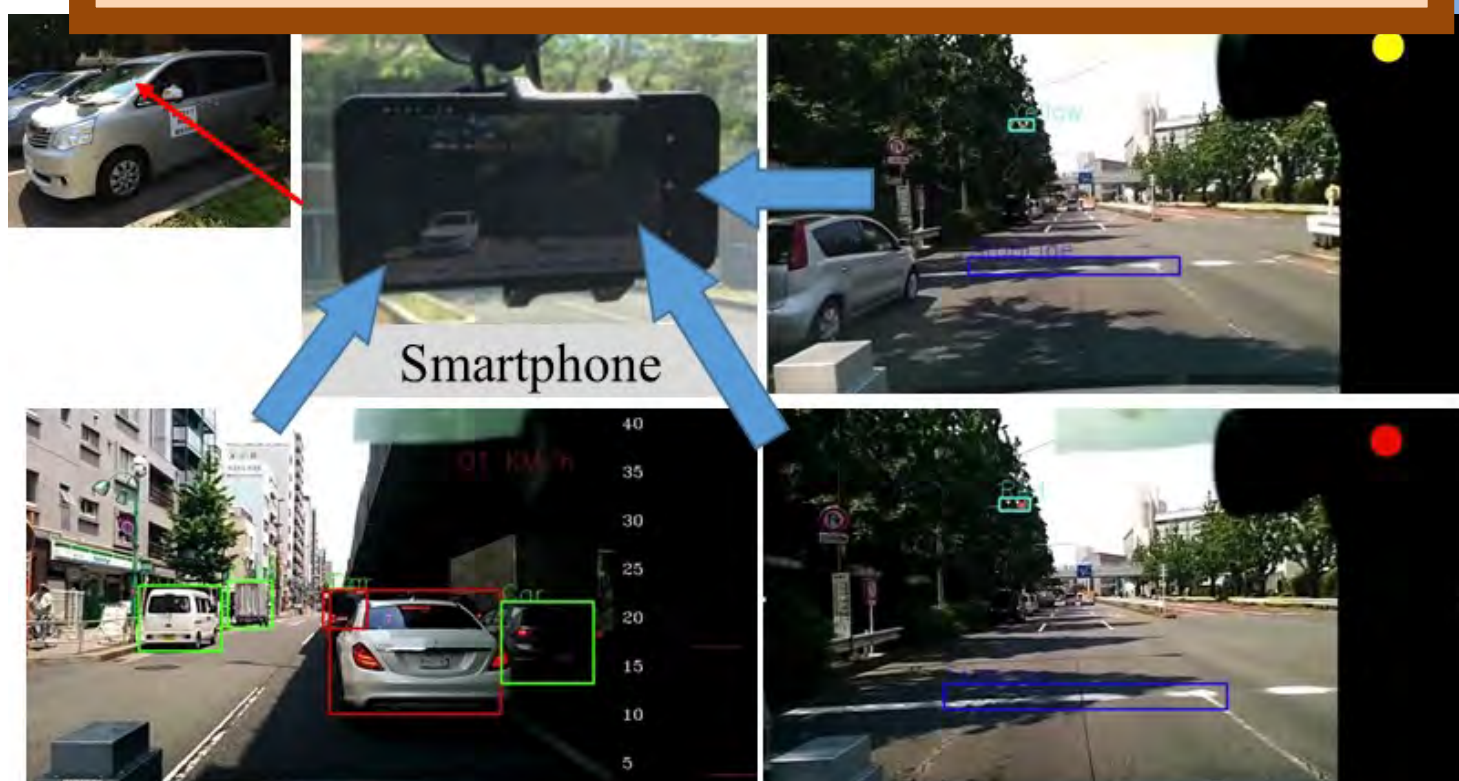
#### Traffic Scene Understanding



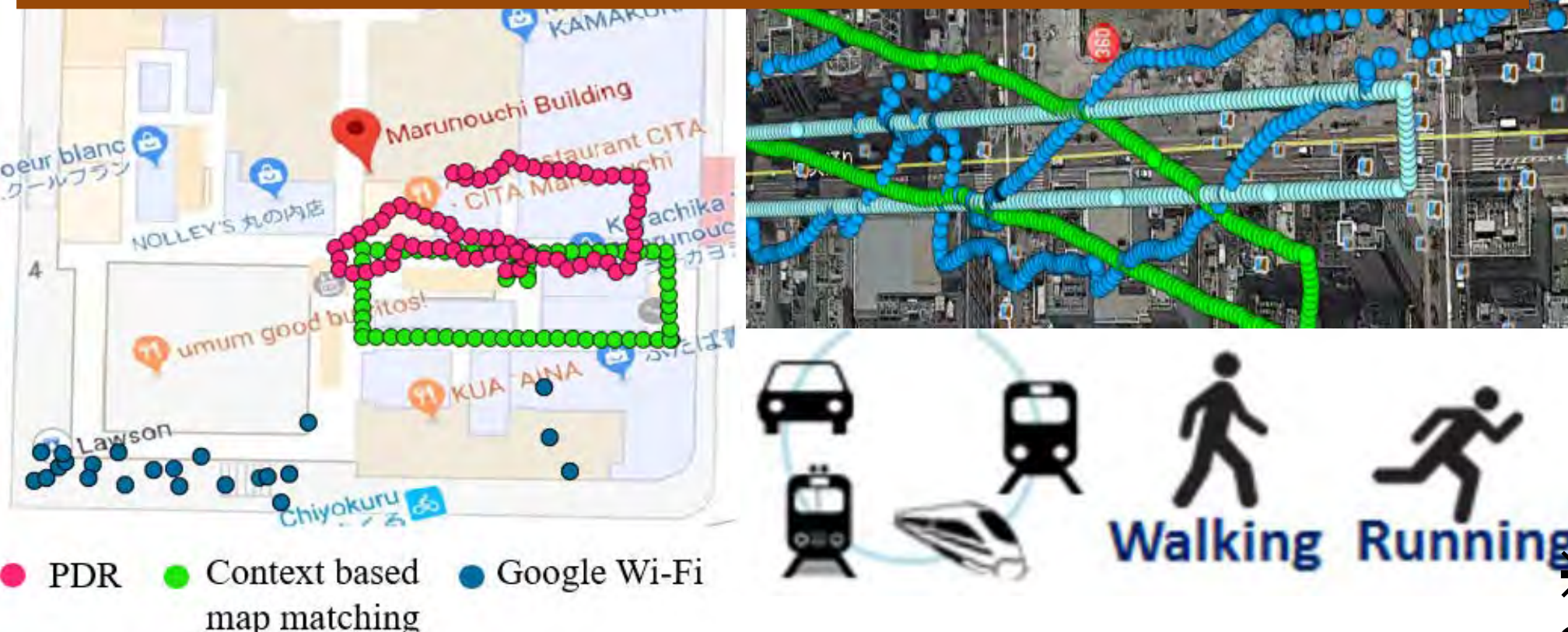
#### Customer Behavior Recognition in Retail Surveillance Video\*



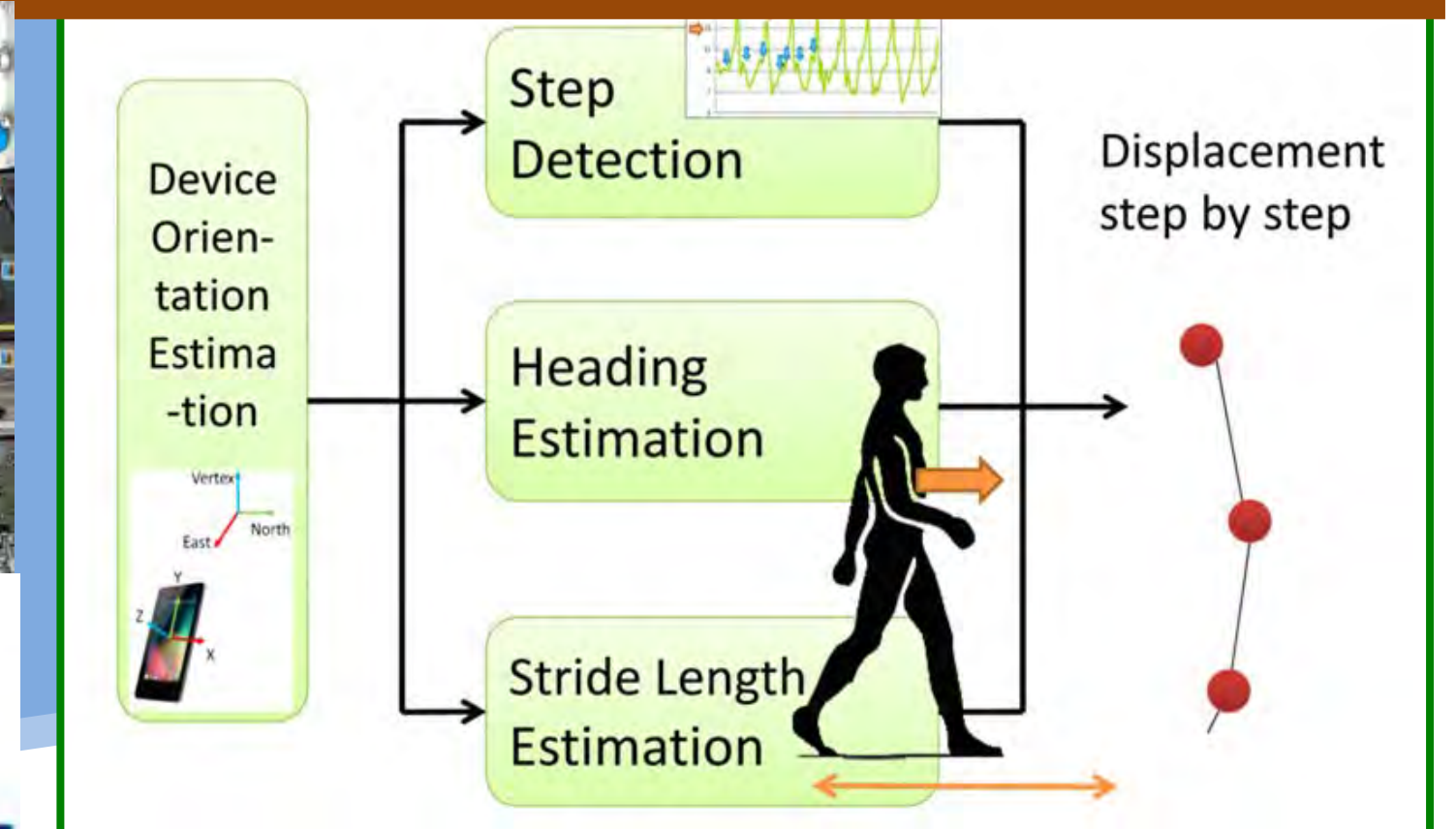
#### Driving Data Recorder using Smartphone



#### Lifelog using Mobility Context Information in Mobile Devices



#### Location Estimation and Pedestrian Dead Reckoning using Mobile Devices



\* This research is permitted by the Compliance Committee of The University of Tokyo

The safety of people and vehicles • The realization of social security

In recent years, autonomous driving and Advanced Driving Assistant Systems (ADAS) attract lots of attention. We are developing Self-localization, Scene Understanding and 3D MAP technology, which are essential to autonomous driving and ADAS. In this way, we are intend to meet the social request that ensuring the safety of people and vehicles.