



# W.TAKEUCHI LAB.


## [Monitoring global environment changes and International technology collaboration]

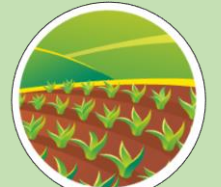
### Department of Humans and Social Systems Remote Sensing of Environment and Disaster


Department of Civil Engineering, Faculty of Engineering

<http://wtlab.iis.u-tokyo.ac.jp/>

**Mission:** Developing methodologies of global-scale measurement on environmental changes in ...  

 **Cities**

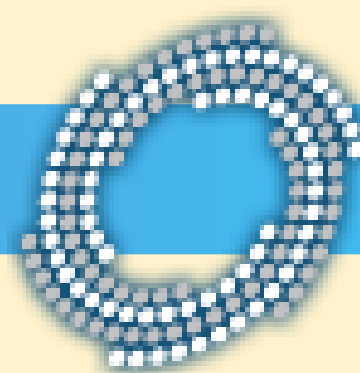
 **Agricultural area**

 **Forested area**

Area exposed to anthropogenic impacts

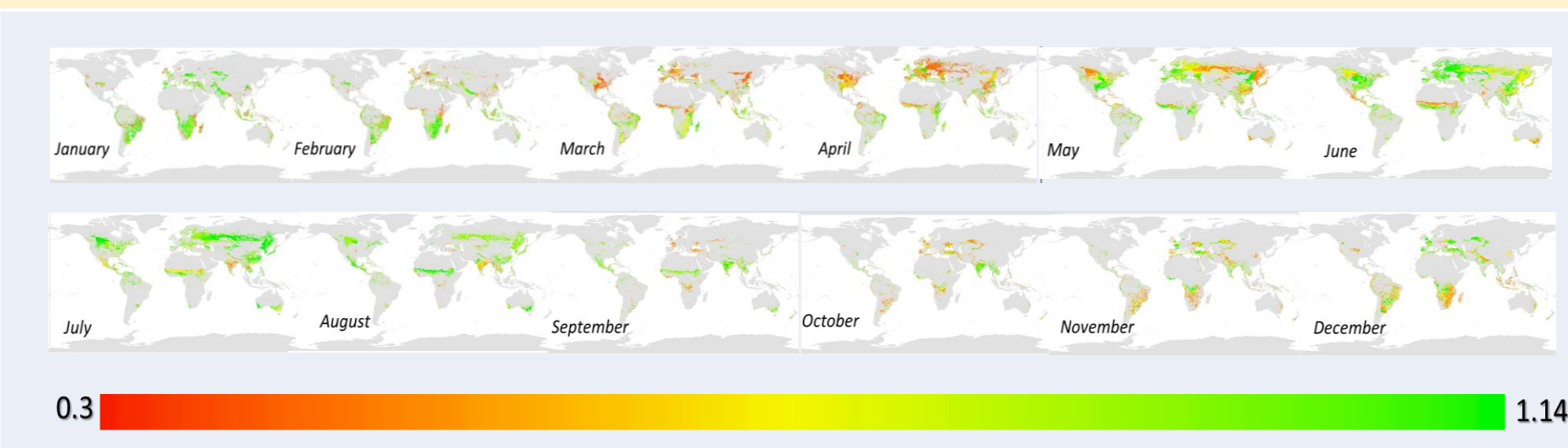


### International technology collaboration with Asian countries

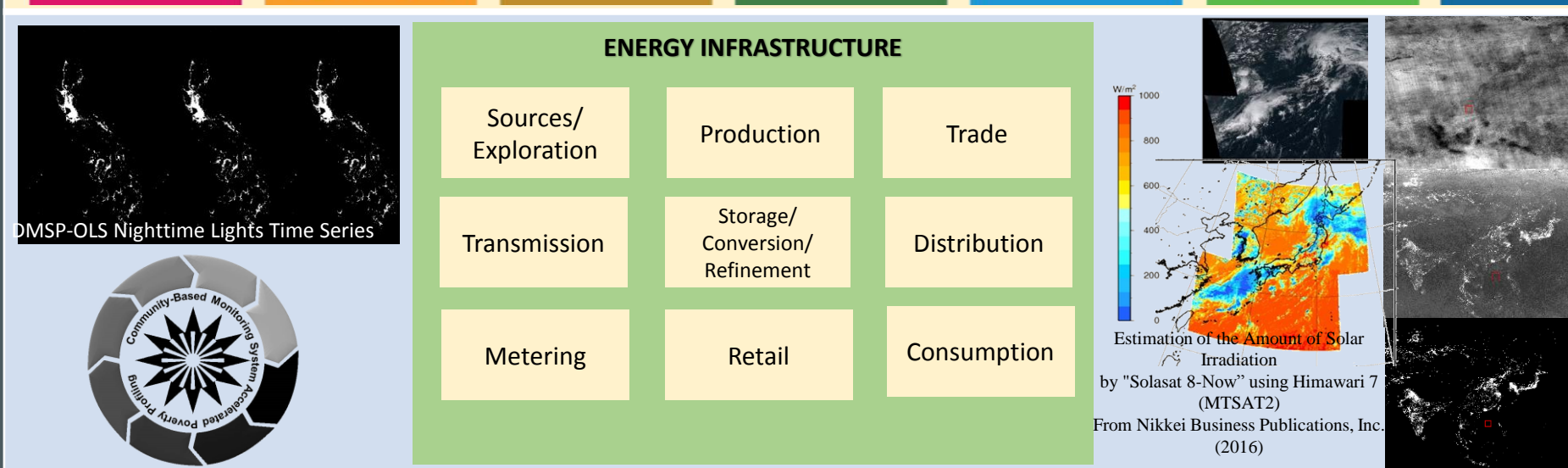


**APRSAP**  
ASIA-PACIFIC REGIONAL SPACE AGENCY FORUM

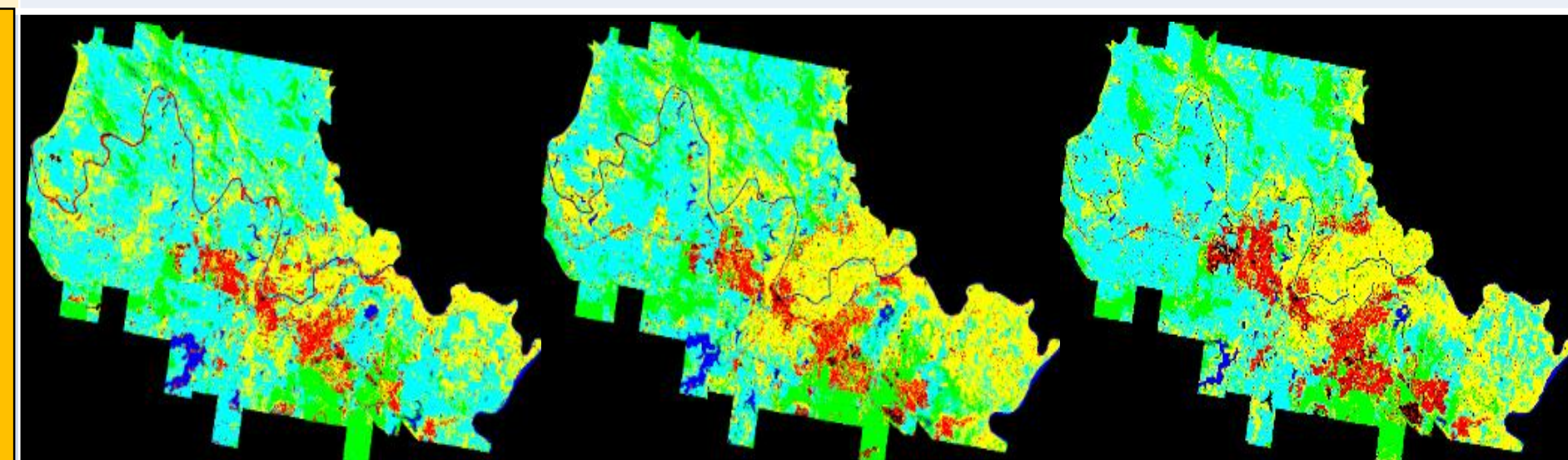
**ADB**  
Asian Development Bank



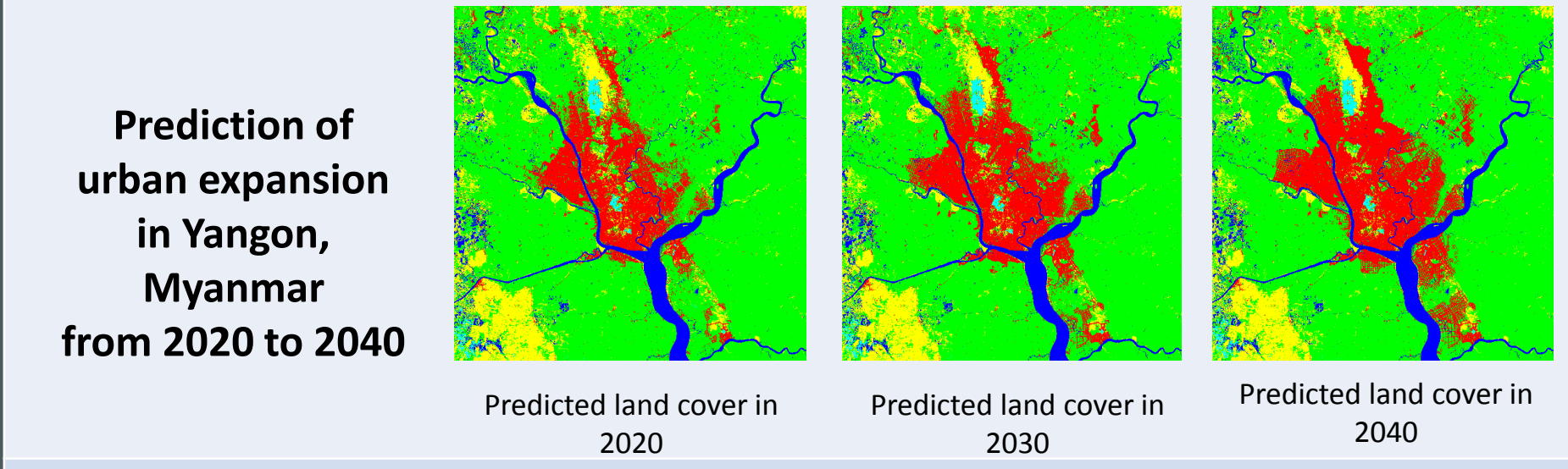
Monthly global Crop coefficients (Kc) to analyse evapotranspiration (ET)



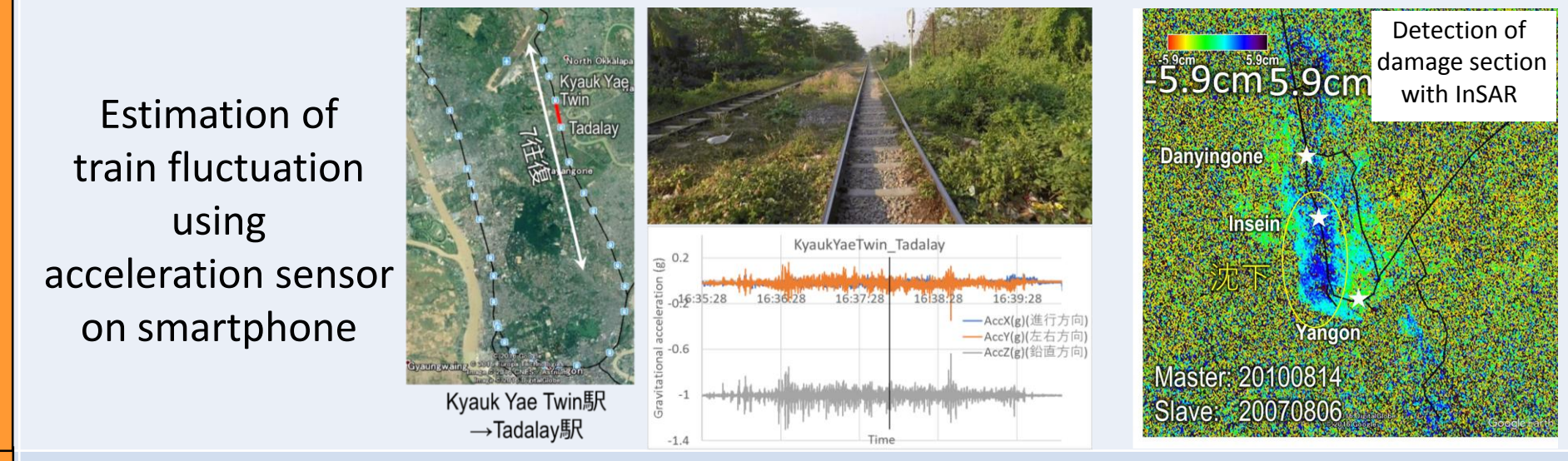
Energy Infrastructure Support towards Poverty Alleviation



Monitoring development of cities along railways



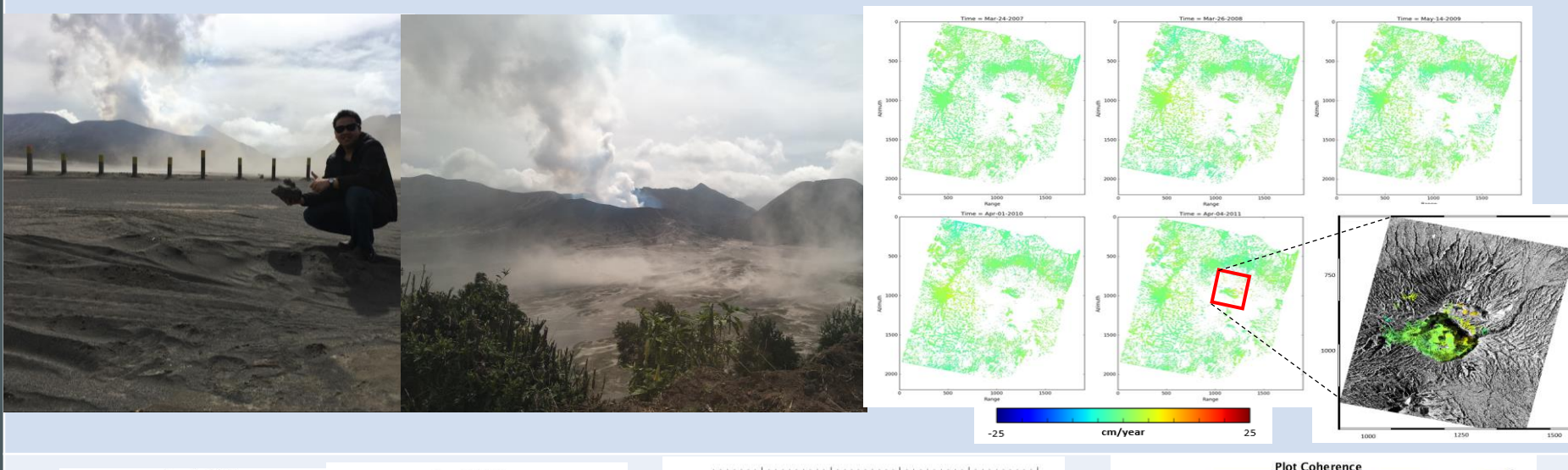
Prediction of urban expansion in Yangon, Myanmar from 2020 to 2040



Modeling urban expansion in Yangon, Myanmar



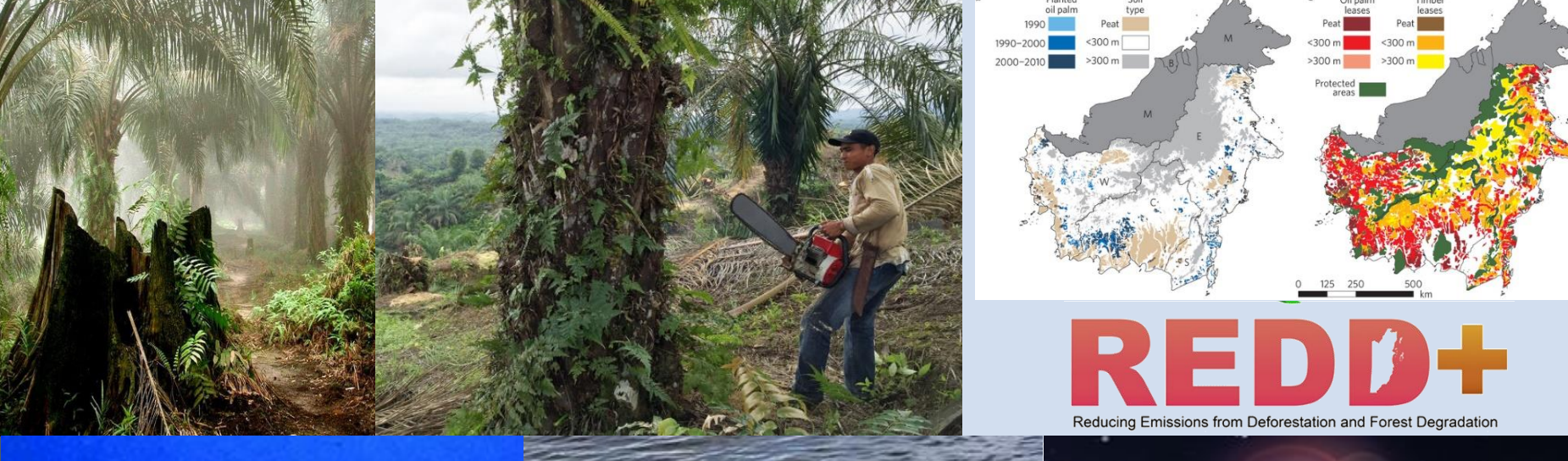
Health Monitoring of Civil Infrastructure



Monitoring active volcano (Mt. Bromo, Indonesia) by using Time-Series Interferometric SAR technique to create disaster-prone areas for sustainable cities.



3D Reconstruction from Images and LiDAR for Infrastructure Health Monitoring



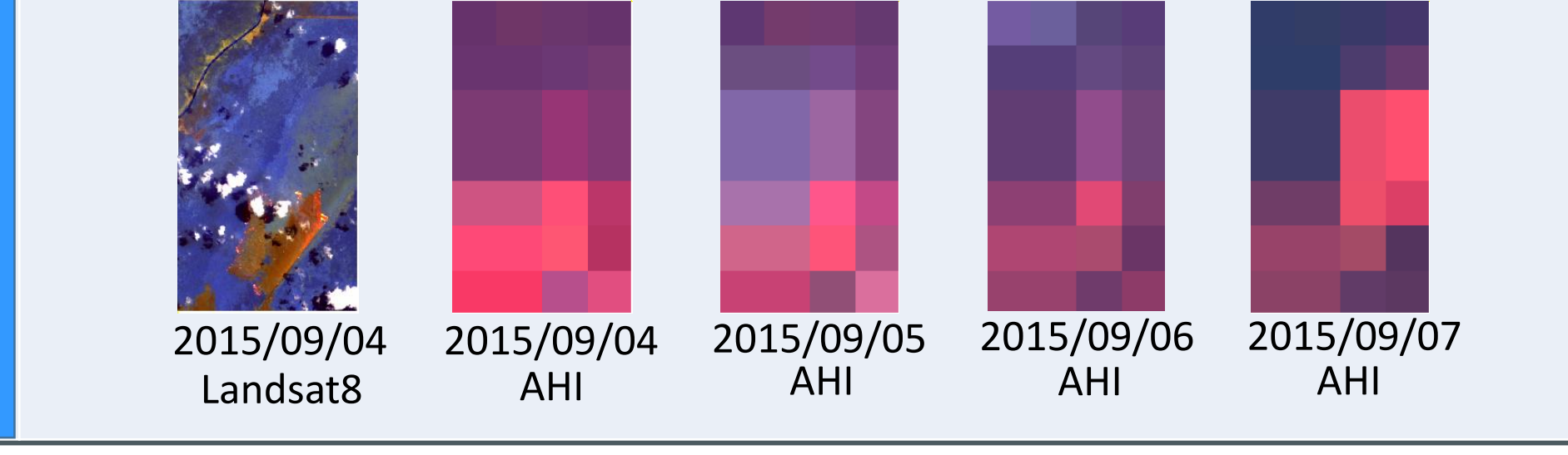
Land Subsidence Detection derived by InSAR Time Series and GPS Analysis in Surabaya, Indonesia



Impact of socio-economic development on urban air quality in India



Assessment of carbon emission in Malaysia palm Oil cultivation regarding to implementation of REDD+ and agro-industrial conflicts



Regional/global evaluation of GHGs emission from tropical rice paddies



Environmental Monitoring of Eastern Thailand Sea



Detection of forest fire by Himawari-8 imager with high temporal resolution

