

野城研究室

[建築におけるIoTの可能性]

生産技術研究所 人間・社会系部門

Department of Human and Social Systems

<http://yashirolab.iis.u-tokyo.ac.jp/>

工学系研究科建築学専攻

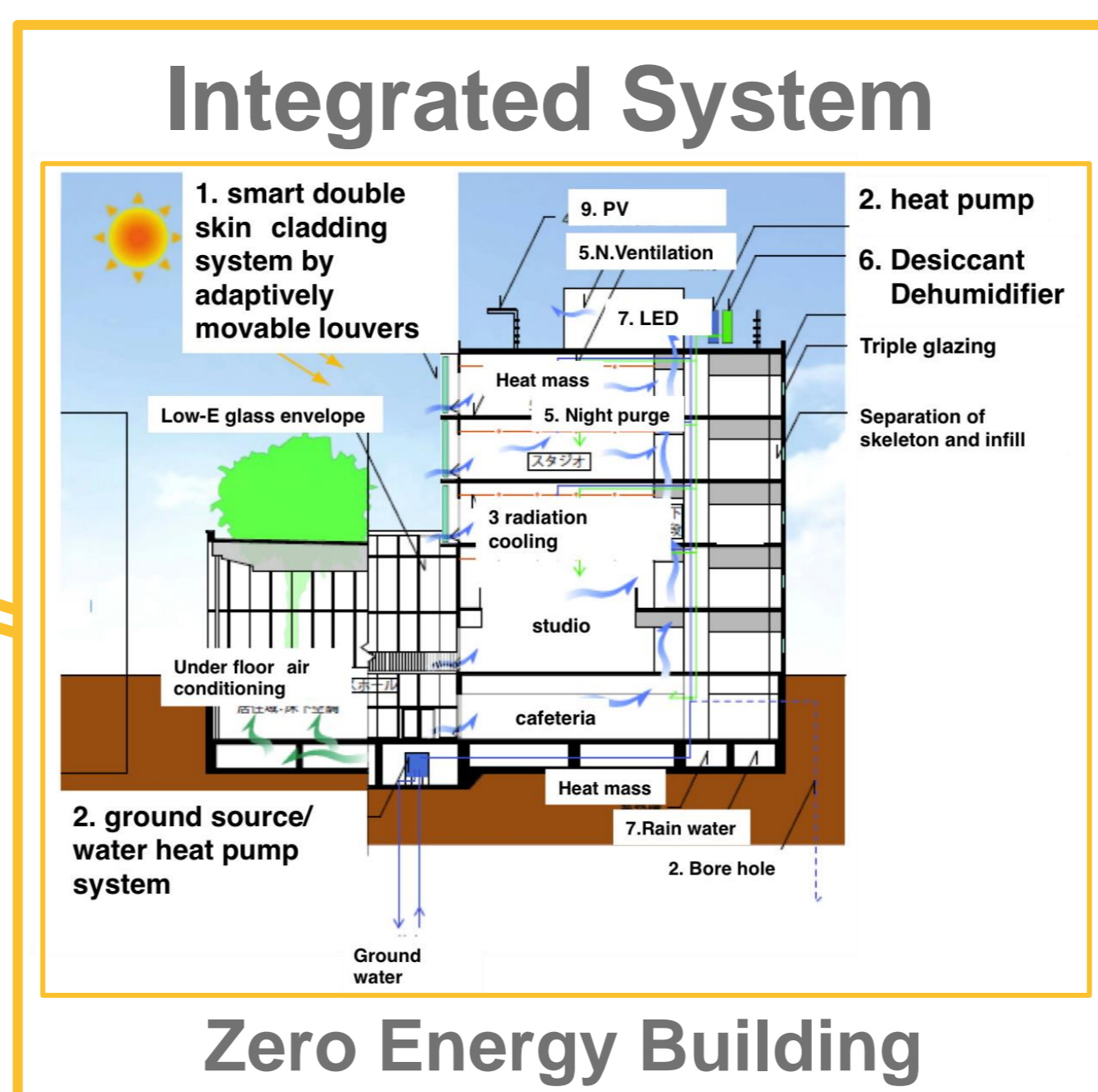
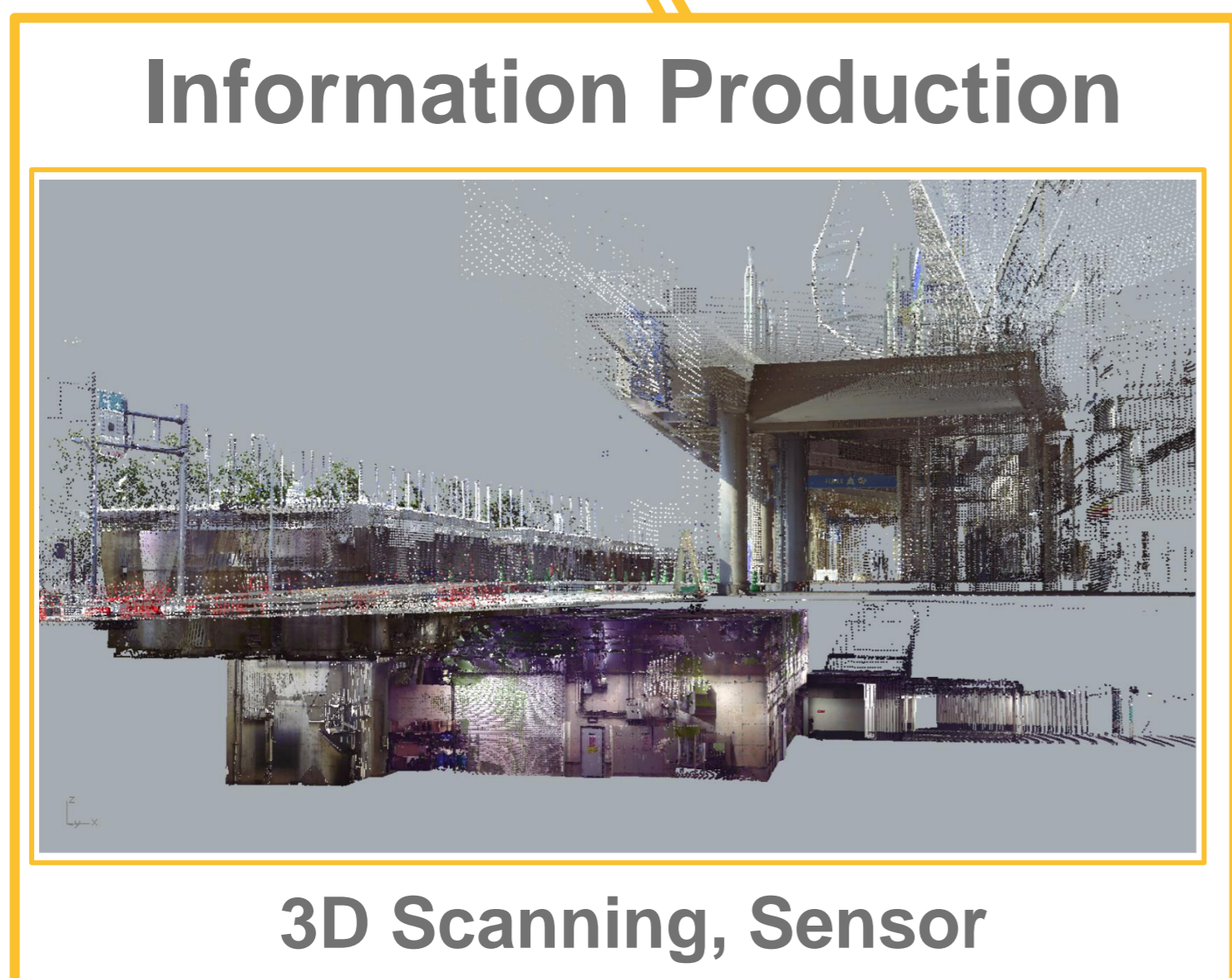
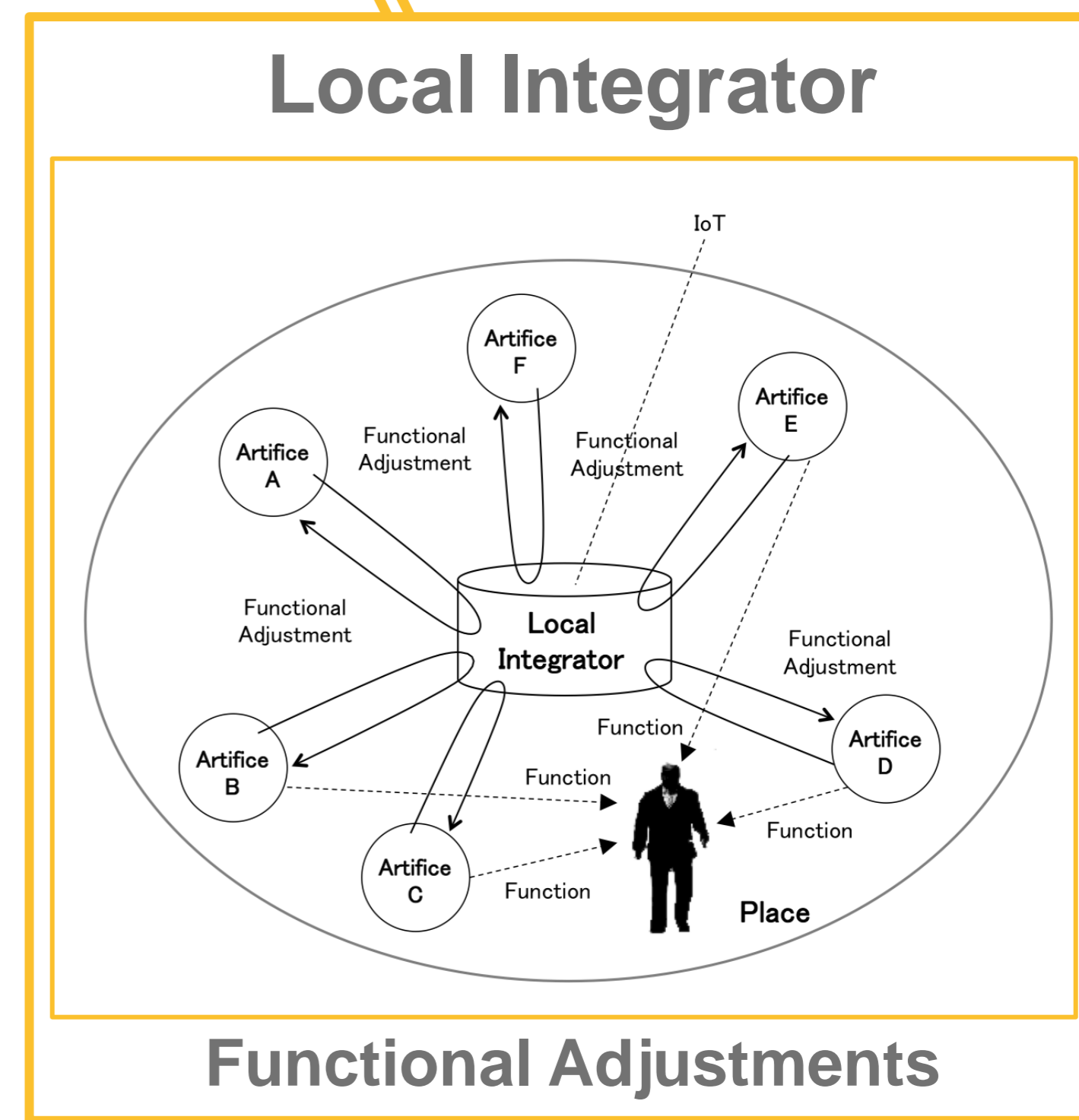
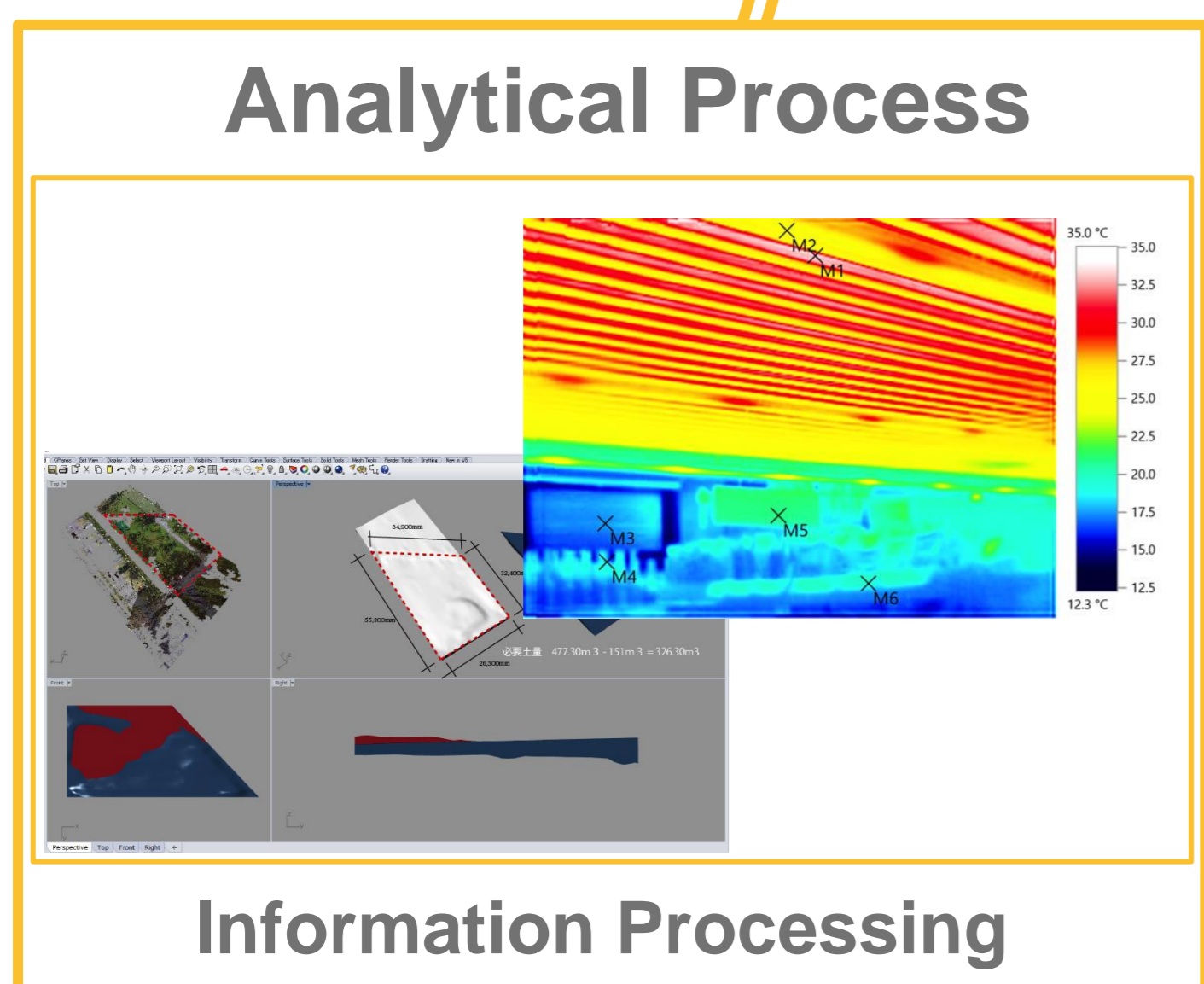
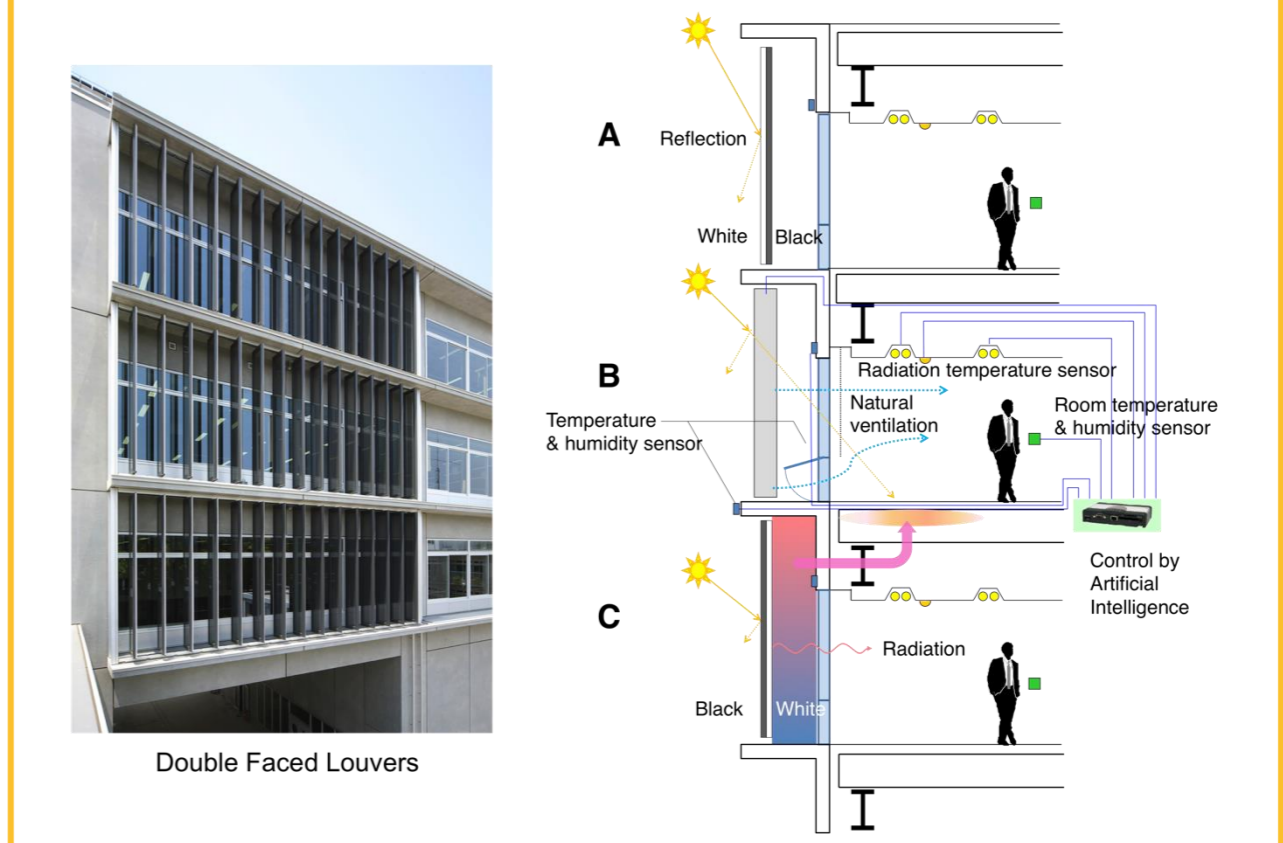
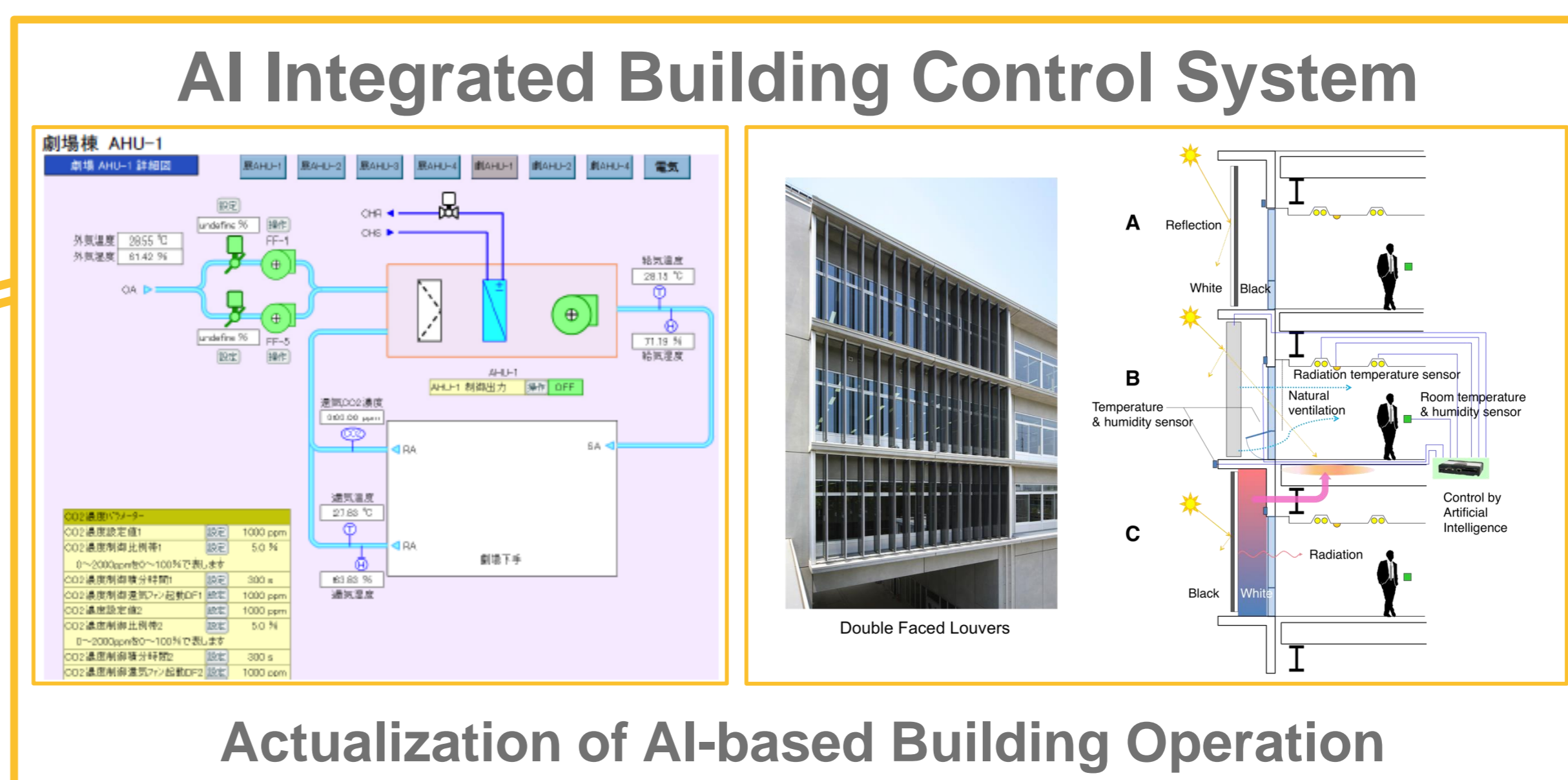
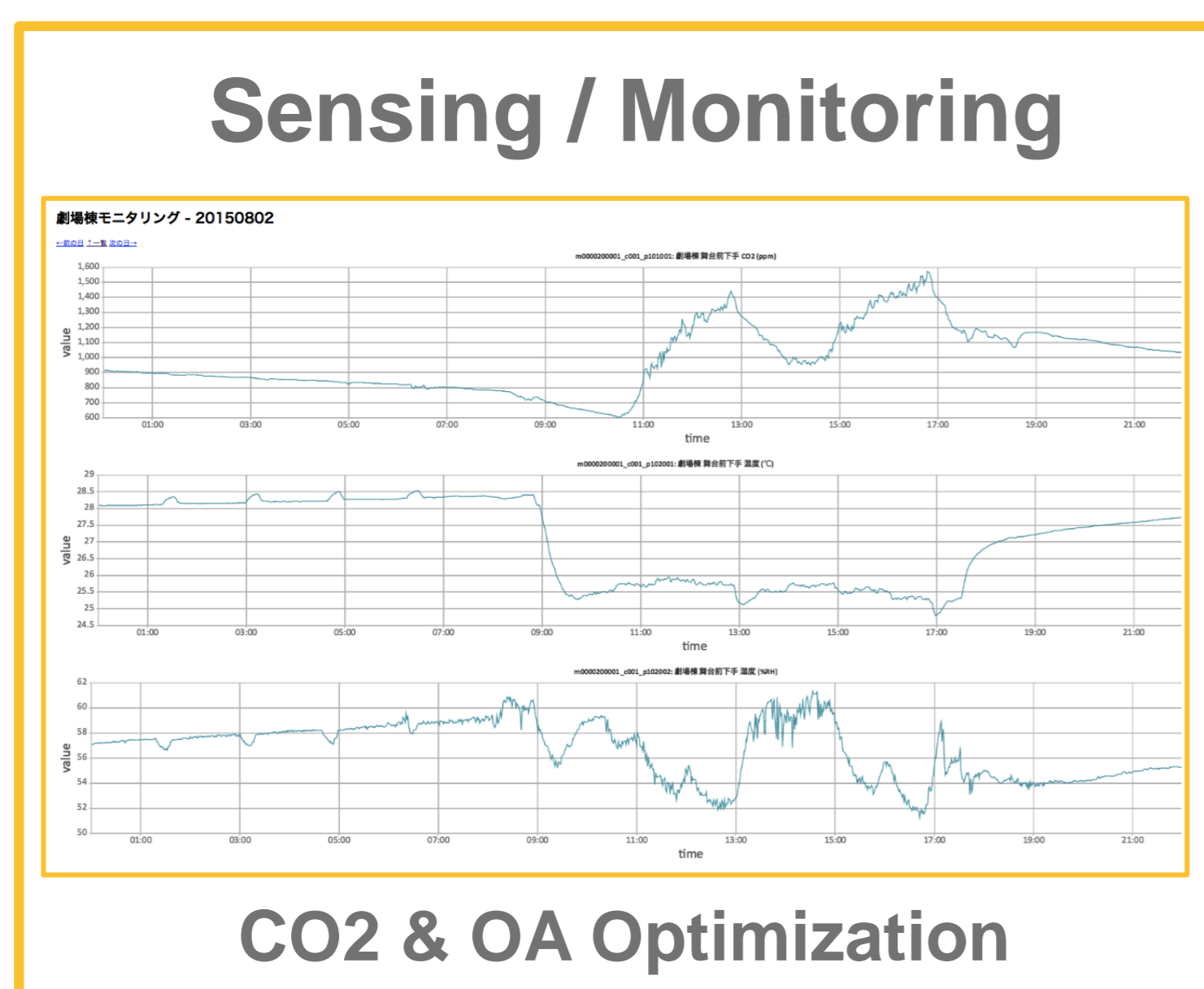
工学系研究科技術経営戦略学専攻

プロジェクト・マネジメント学

建築におけるIoTの可能性

Building and Internet of Things – Potentials and Challenges

IoTが建築を如何に変えていく可能性をもっているか？



User Interface

Summer		Winter	
Temp.	Expected Maximum Temp.	Temp.	Expected Maximum Temp.
29.8°C	29.8°C	11.5°C	12.3°C
Tomonari Yashiro Lab		Tomonari Yashiro Lab	
Now :	6.0 kW	Now :	4.0 kW
Target of Peak Demand :	5.9 kW	Target of Peak Demand :	5.9 kW
-Komaba Research Campus-		-Komaba Research Campus-	
Now :	4,000.0 kW	Now :	3,080.0 kW
Target of Peak Demand :	4,900.0 kW	Target of Peak Demand :	4,900.0 kW

Energy Visualization