



TATSUMA LAB.

[Photofunctional Nanomaterials]

Nanoscience Center for Photonics, Electronics, and Materials Engineering

Advanced Electrochemical Devices

Department of Applied Chemistry

<http://www.iis.u-tokyo.ac.jp/~tatsuma/>

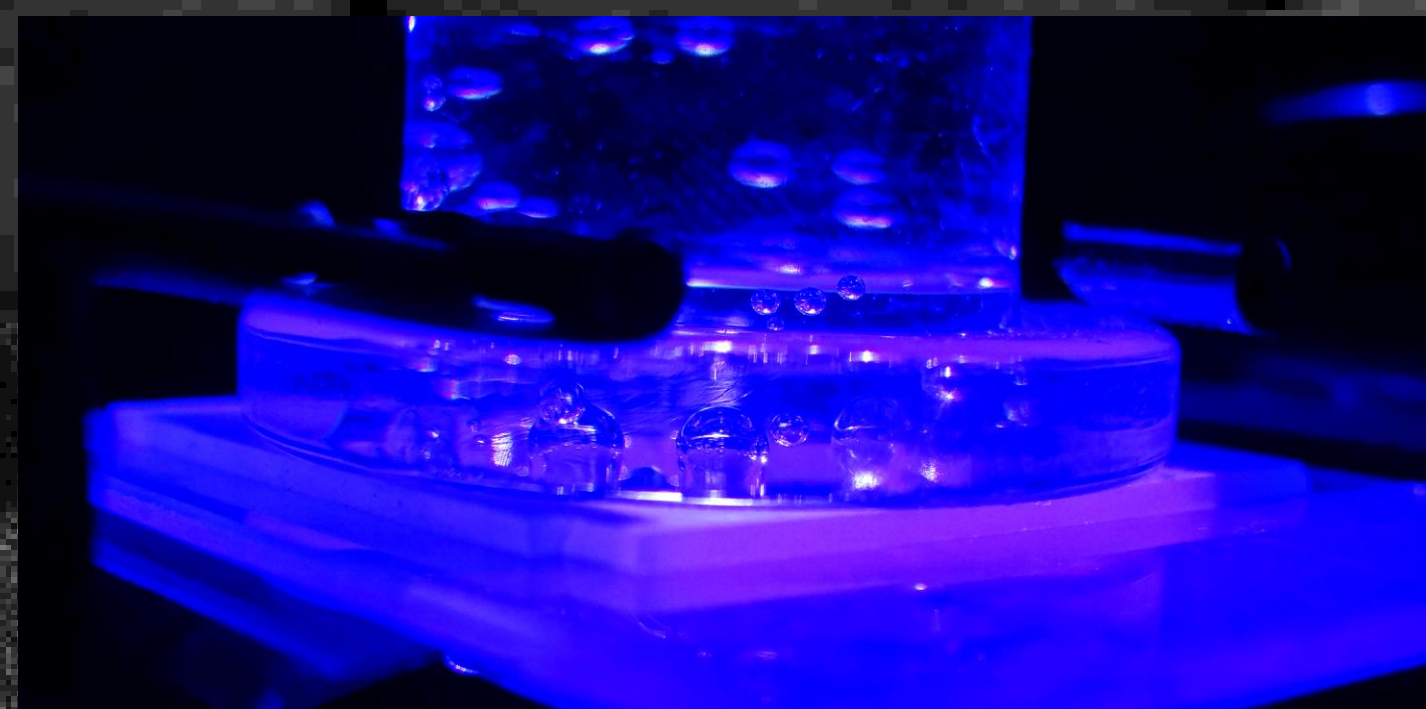


Plasmonic Nanoparticles

Nanodome



Semitransparent Solar Cells

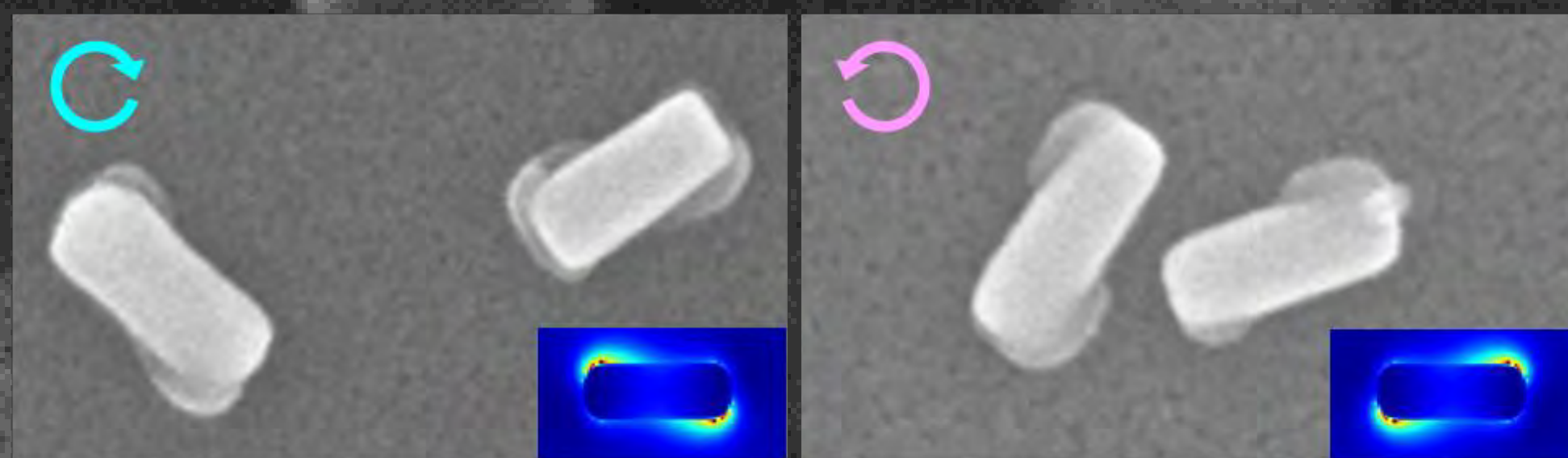


Photocatalytic Hydrogen Evolution



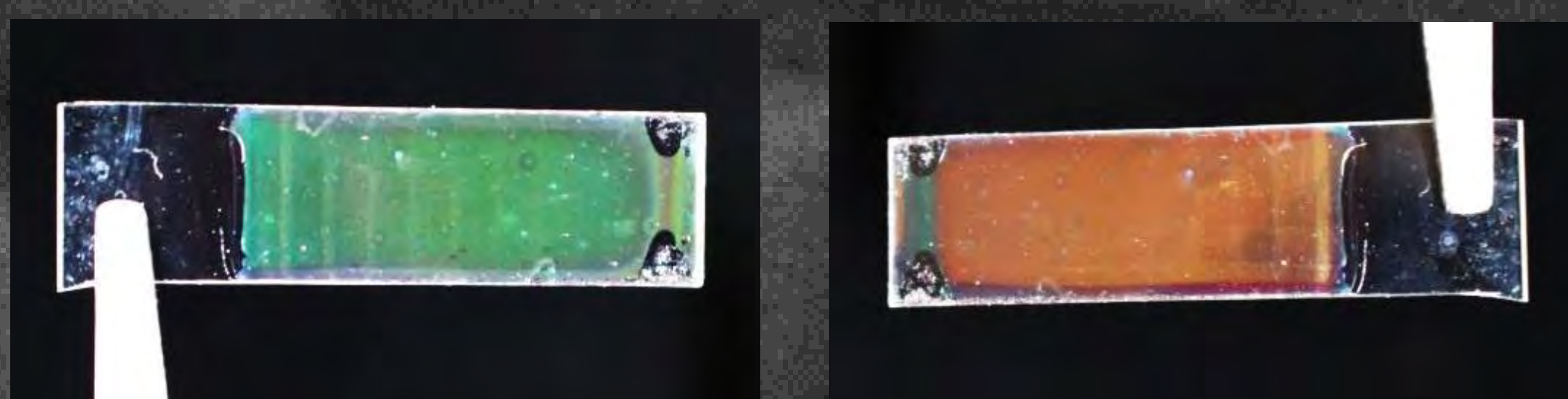
Infrared Devices

Nanohole



Chiral Plasmonic Nanostructures

Nanotown



Asymmetric Scattering Colors

Tatsuma Group

