

KAWAKATSU LAB.

[Connecting to the Nano Regime]

Centre for Interdisciplinary Research on Micro-Nano Methods

Scanning Probe Microscopy and Nano-Machines

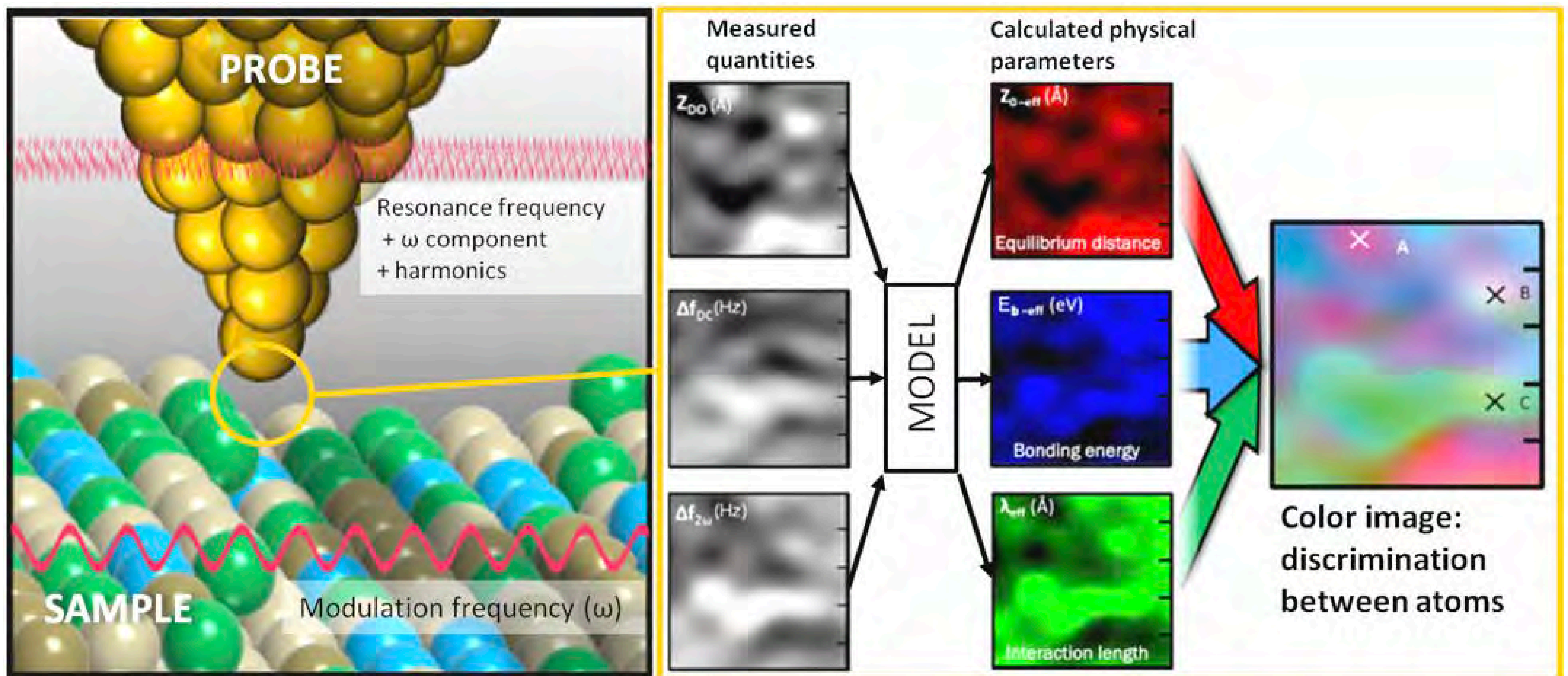


Fig.1. Colour Atomic Force Microscopy. Modulation techniques were employed to measure the potential landscape on-the-fly. The potential parameters were assigned to RGB to generate a colour image.



Fig.2. UHVTEMAFM.

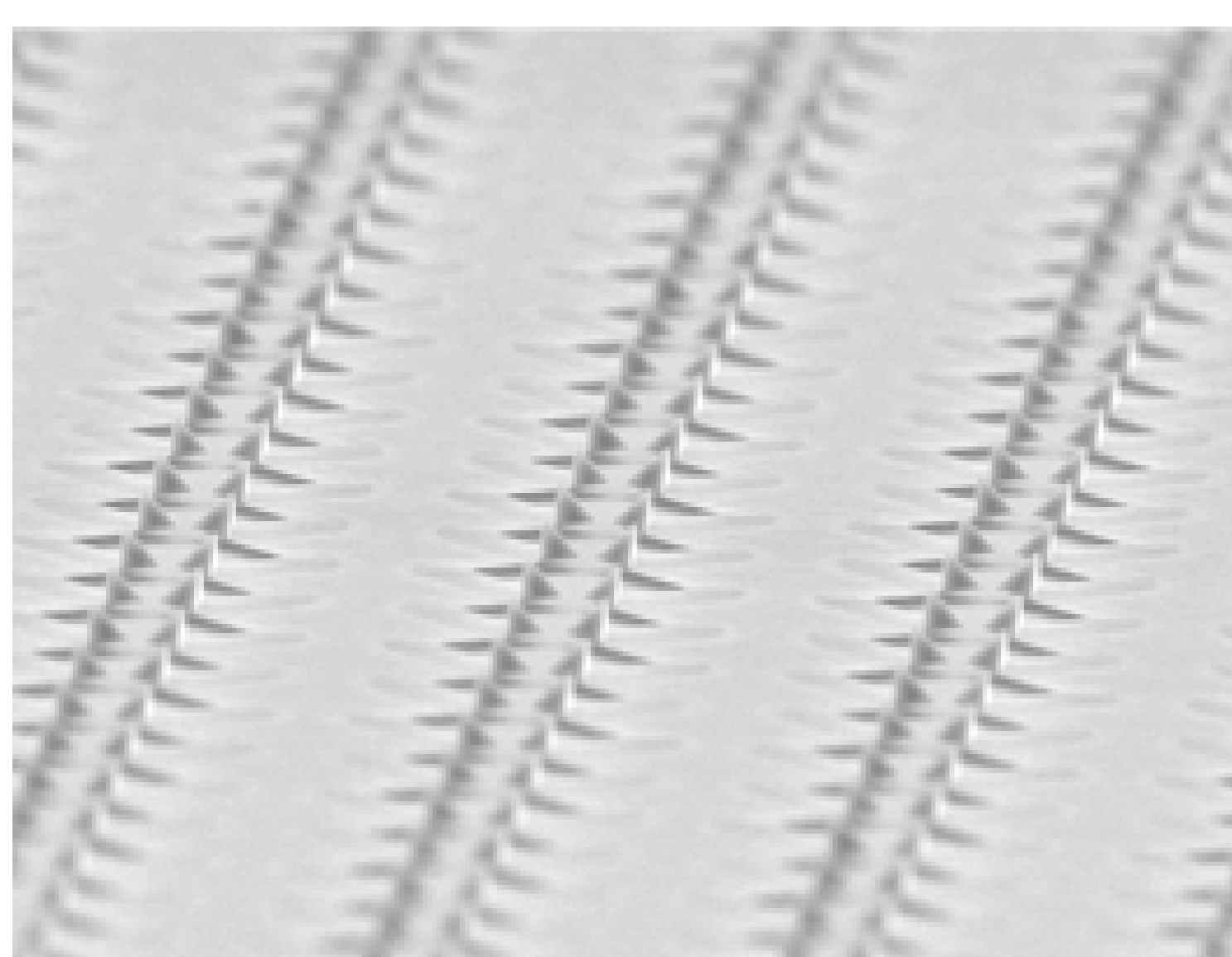


Fig.3. Millions of cantilevers for parallel sensing and multiasperity contact.

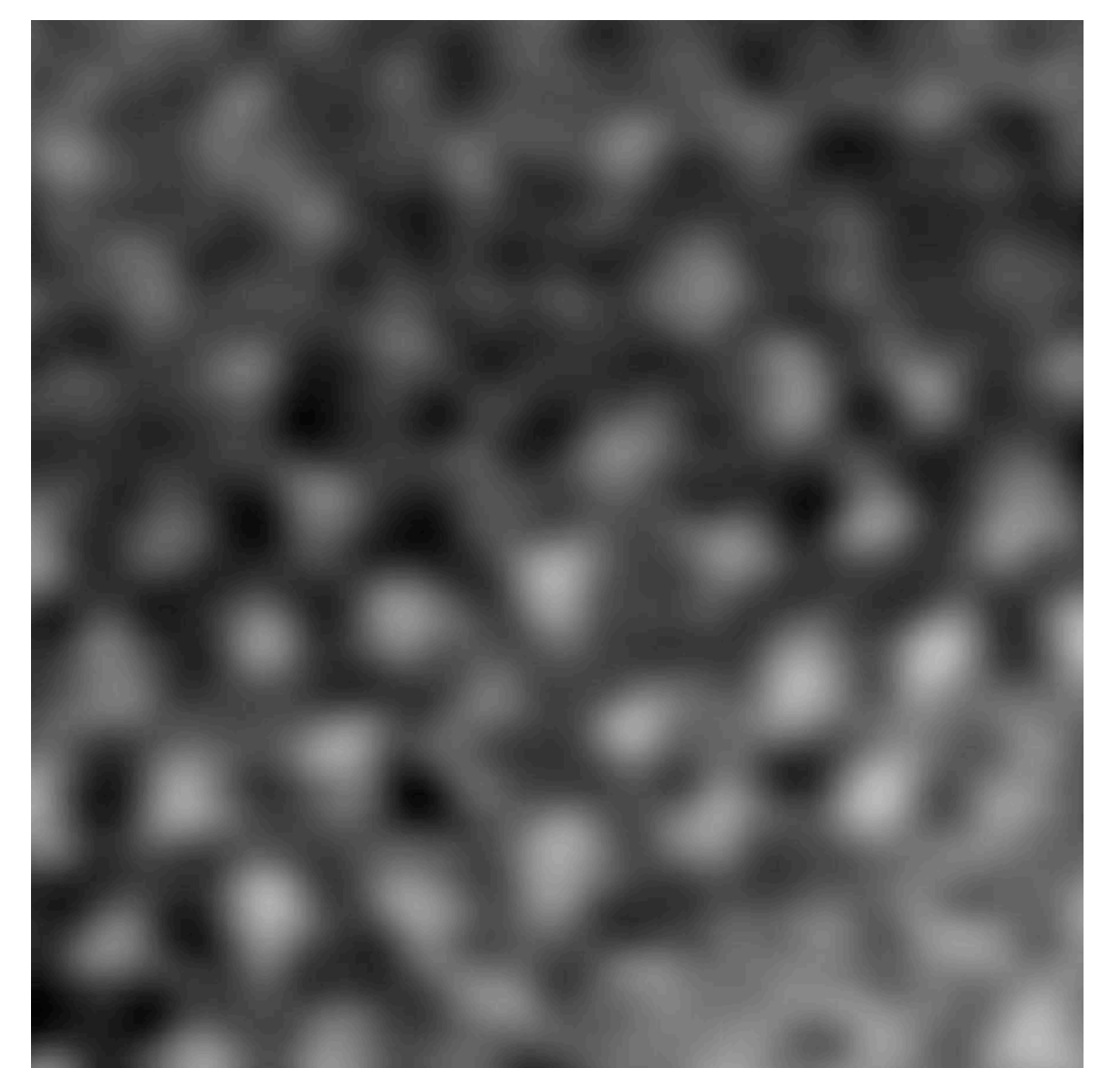


Fig. 4. Water on mica. Liquid AFM.

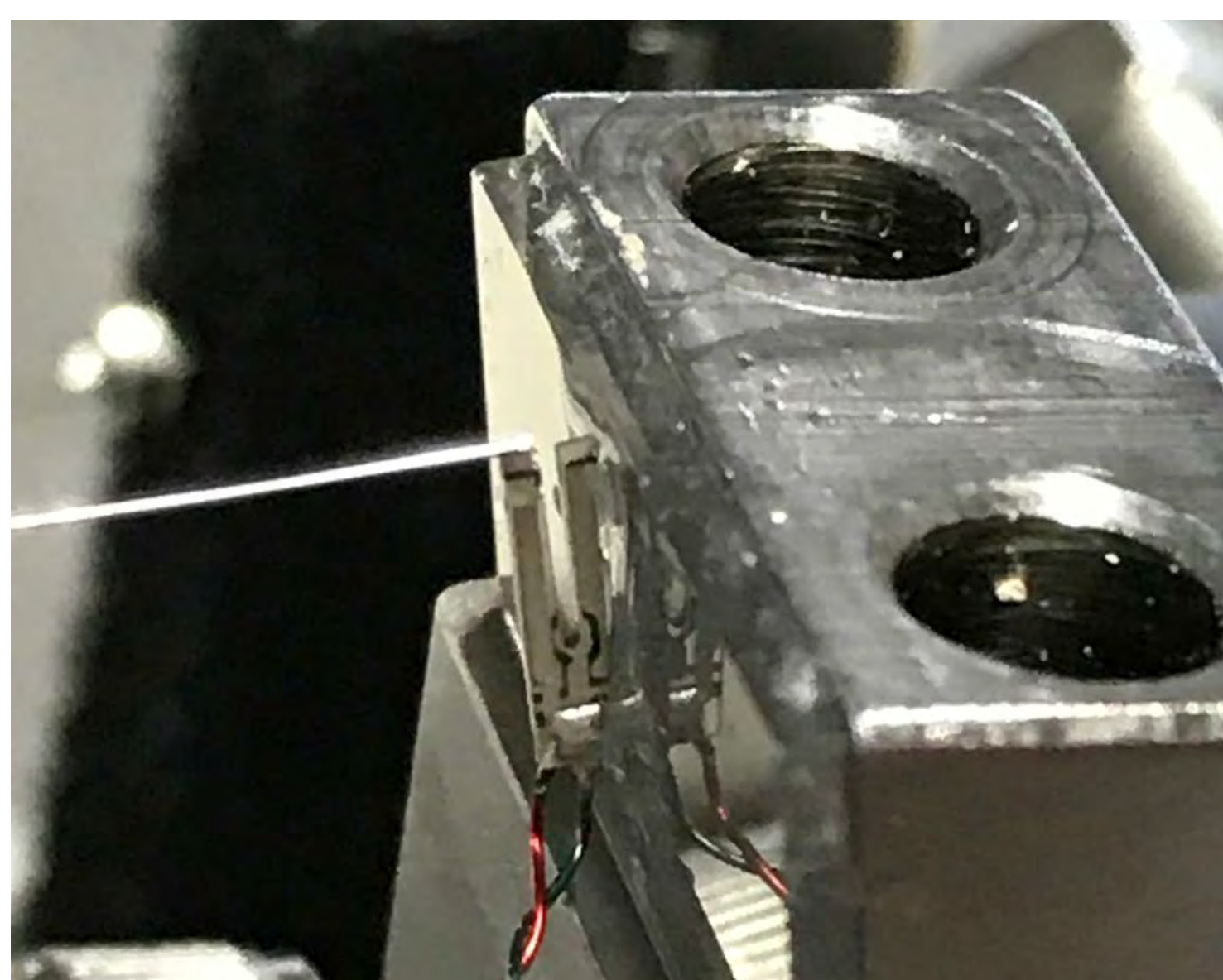


Fig.5 Simple 'Palm' AFM with a tuning fork.

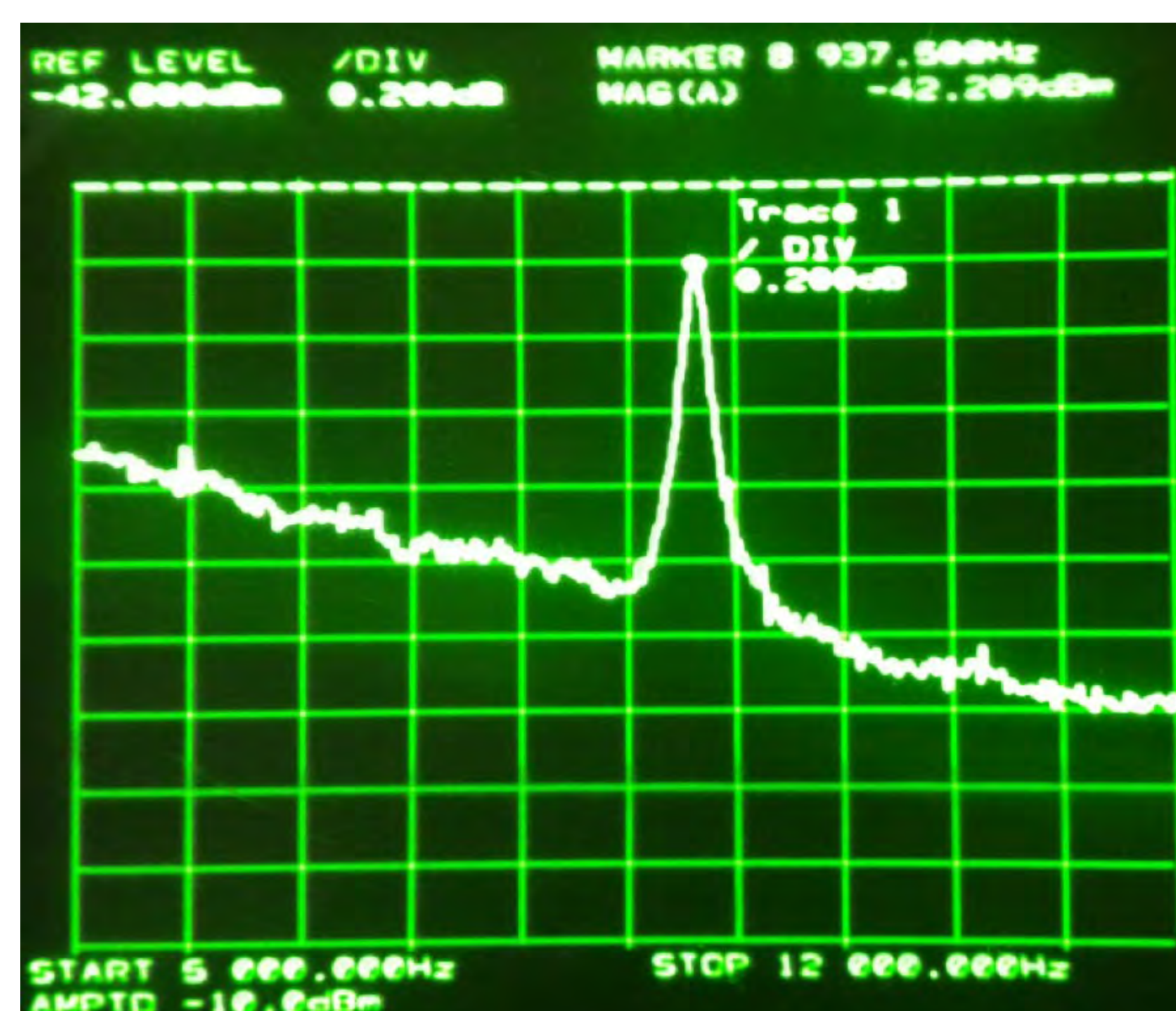


Fig. 6 Exciting vibration of an AFM cantilever with an optical lever.

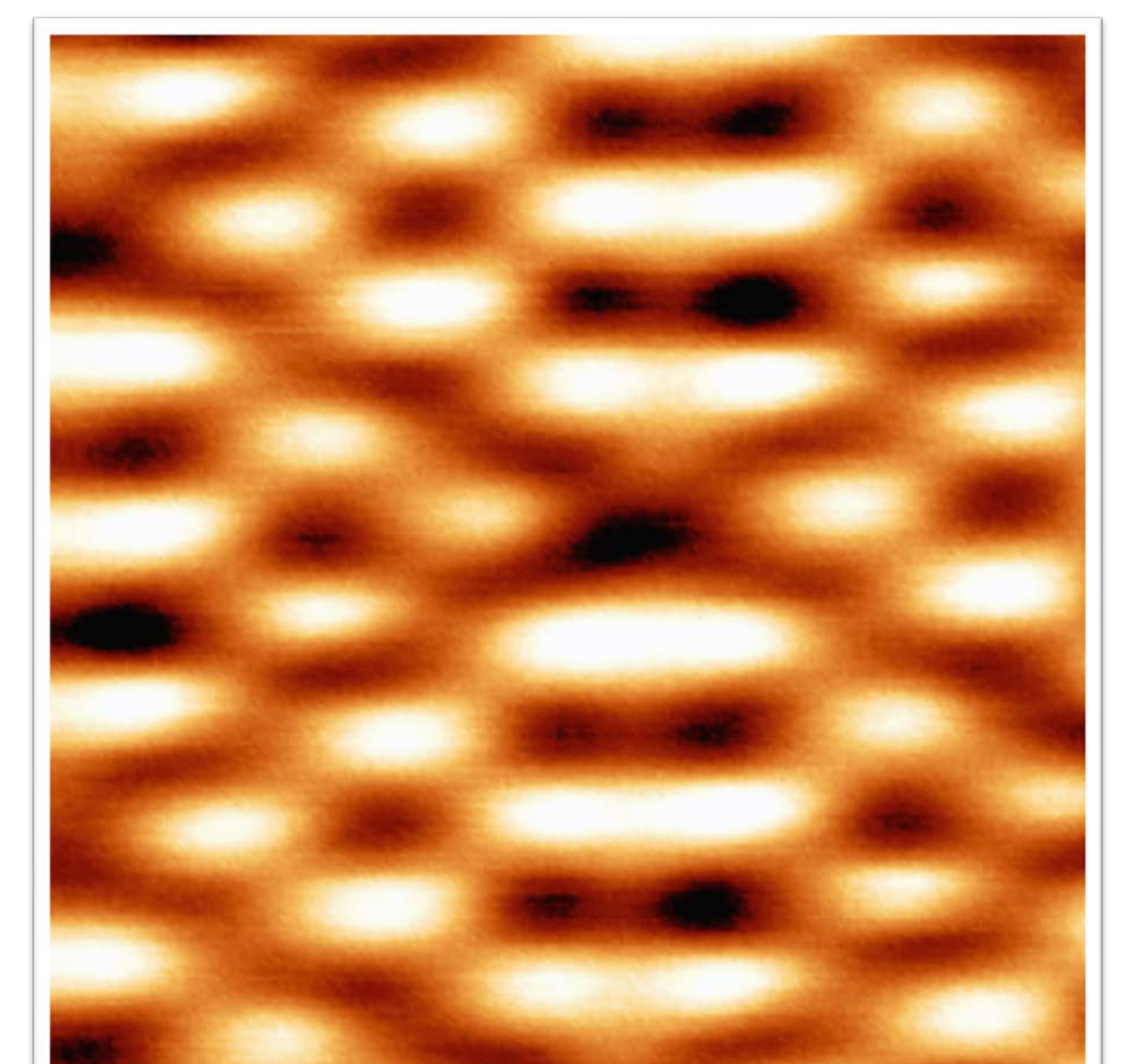


Fig. 7 Lateral force gradient of Si(111) 7x7 surface.