

Center for Integrated Underwater Observation Technology

[Evolution of Studies on Underwater Technology]

Applied Sensing for Deep-sea Resources Exploration

Graduate School of Frontier Sciences, Dept. of Ocean Technology, Policy and Environment

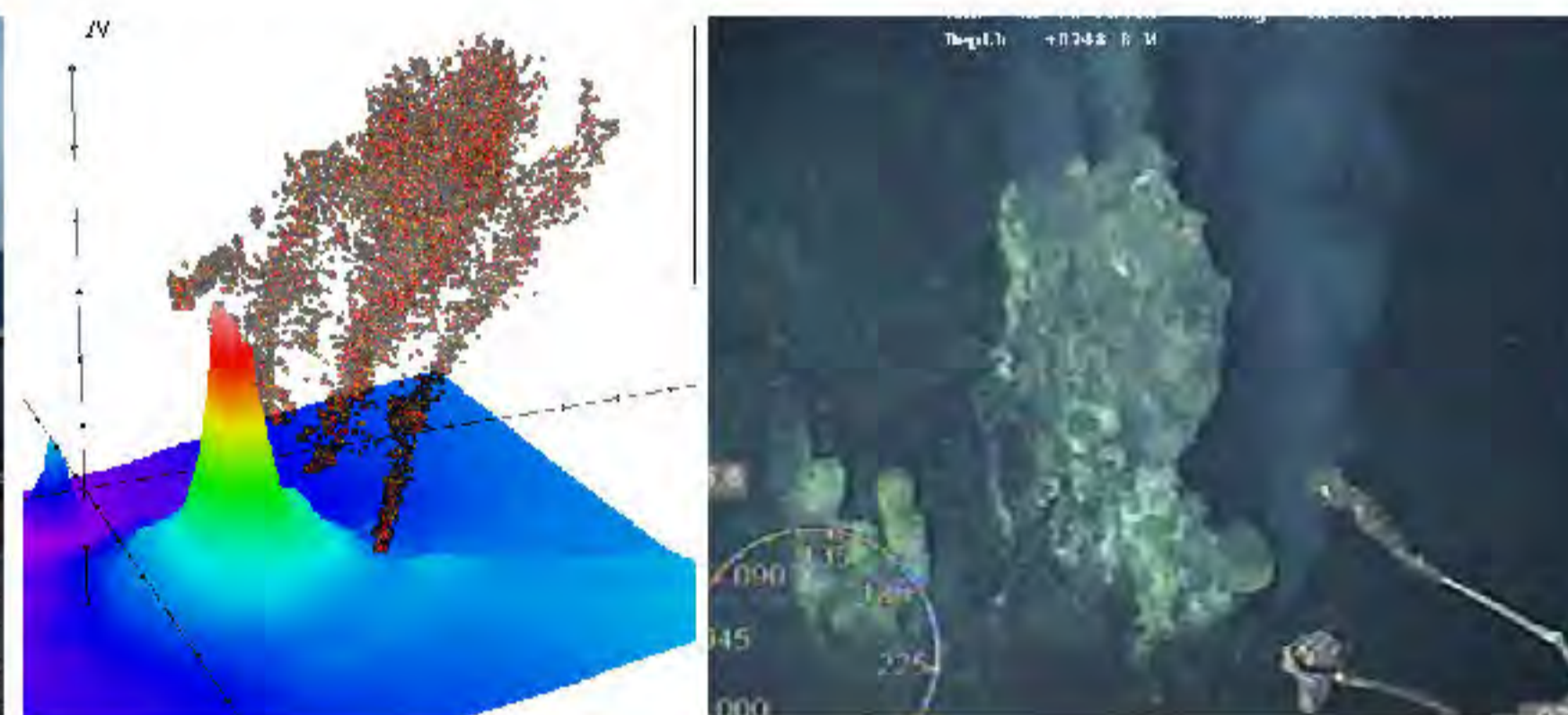
Graduate School of Engineering, Dept. of Systems Innovation

<http://seasat.iis.u-tokyo.ac.jp/>

Evolution of Studies on Underwater Technology

Actual Benefit, Creation and Discovery, Exploration of Future

Asada Lab.
Underwater Acoustic Systems Engineering



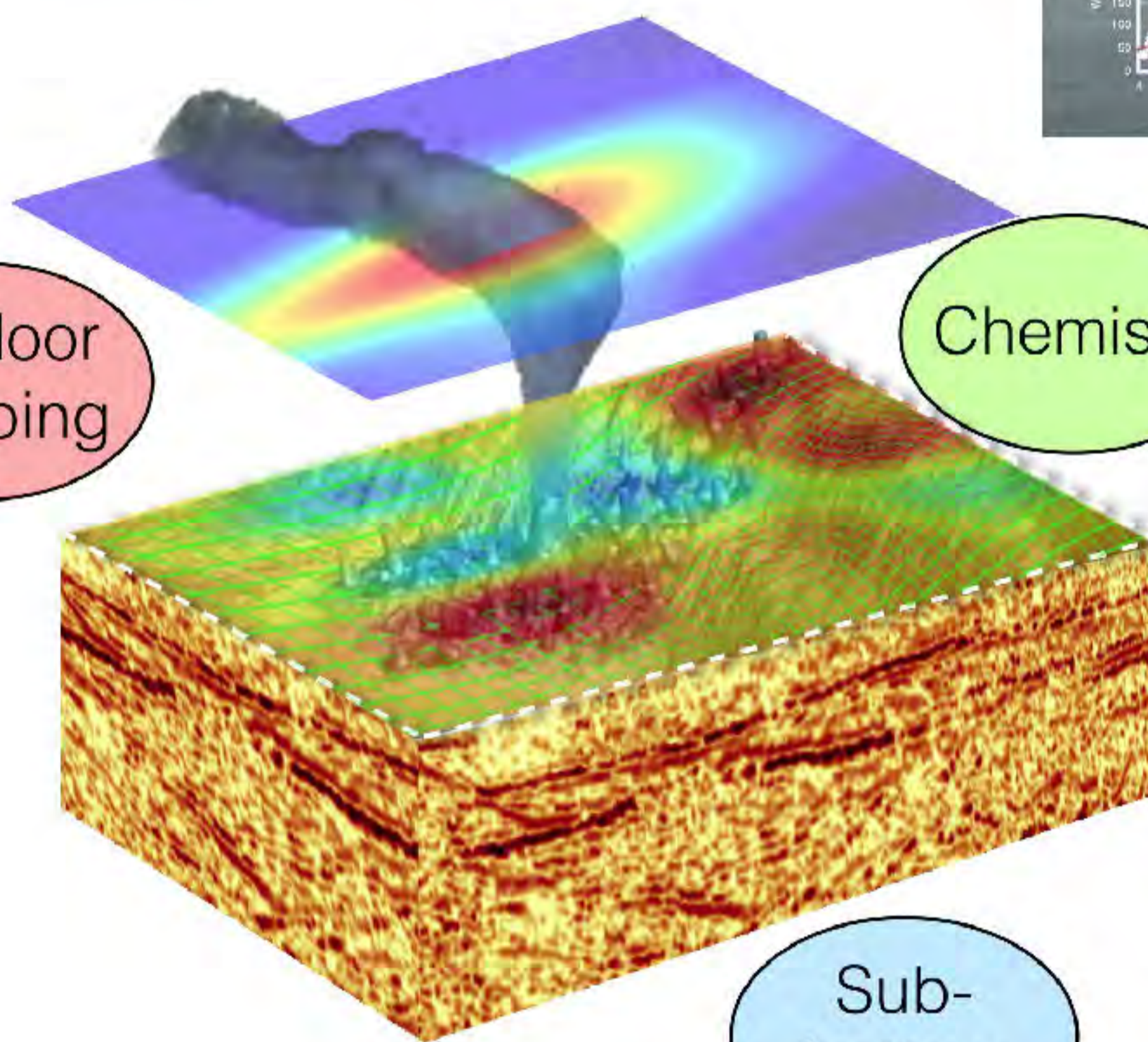
Rheem Lab.
Ocean Environmental Engineering



Kawaguchi Lab.
Multidisciplinary Seafloor Observatory Engineering



Seafloor mapping



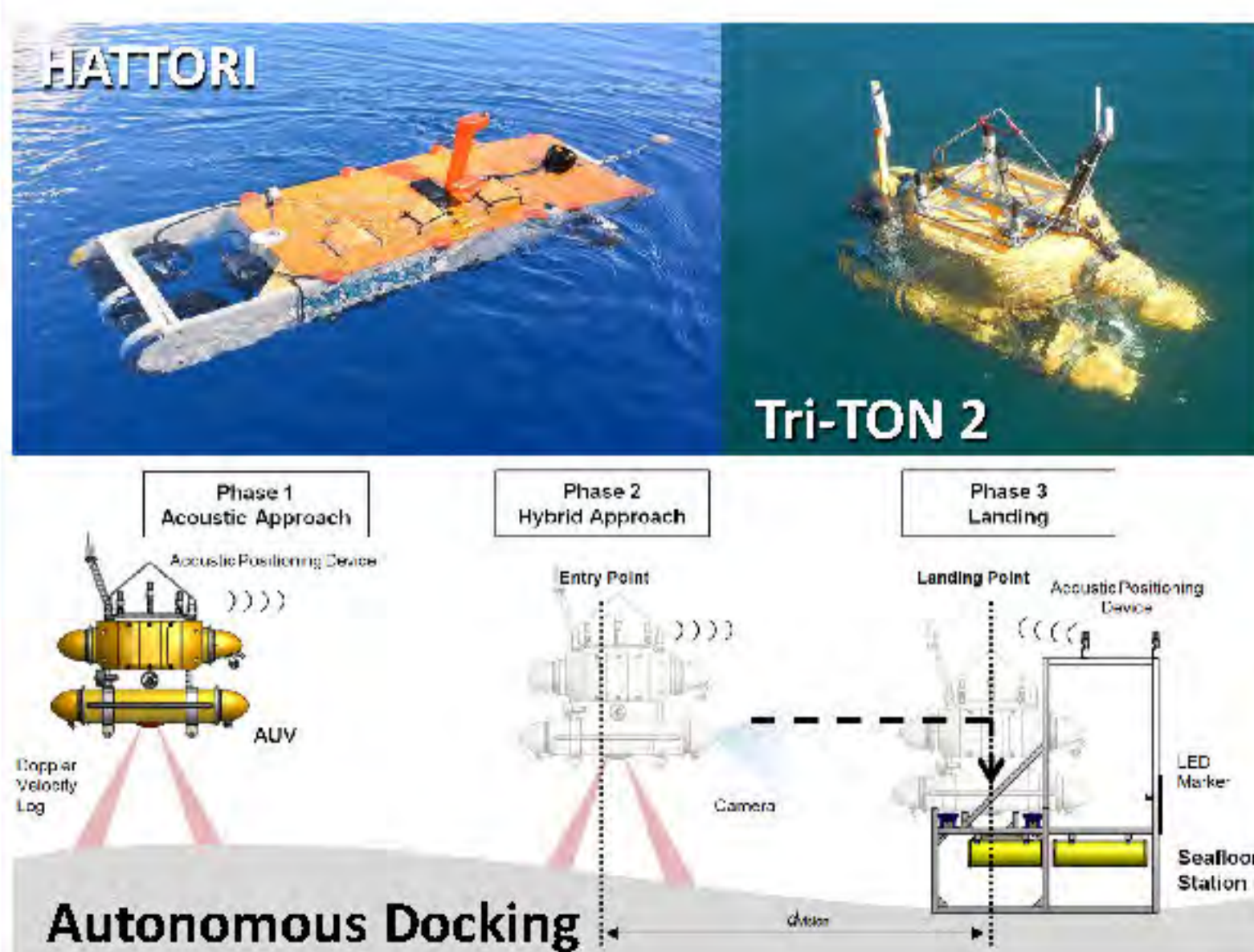
Chemistry

Sub-bottom

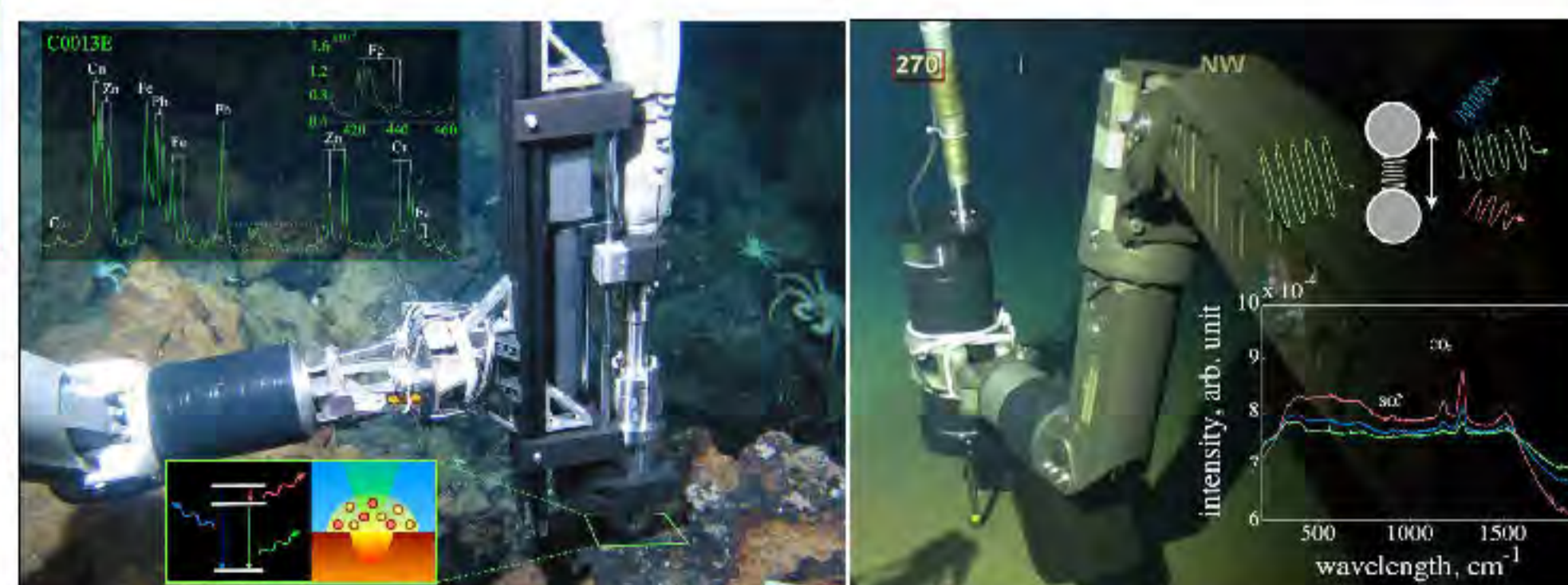
Kitazawa Lab.
Marine Ecosystem Engineering



Maki Lab.
Underwater Platform Systems



Thornton Lab.
Underwater Photonics



Hasegawa Lab.
Interfacial Transport Engineering

