

CIUOT

Center for Integrated Underwater Observation Technology

[Evolution of Studies on Underwater Technology]

Applied Sensing for Deep-sea Resources Exploration

Graduate School of Frontier Sciences, Dept. of Ocean Technology, Policy and Environment

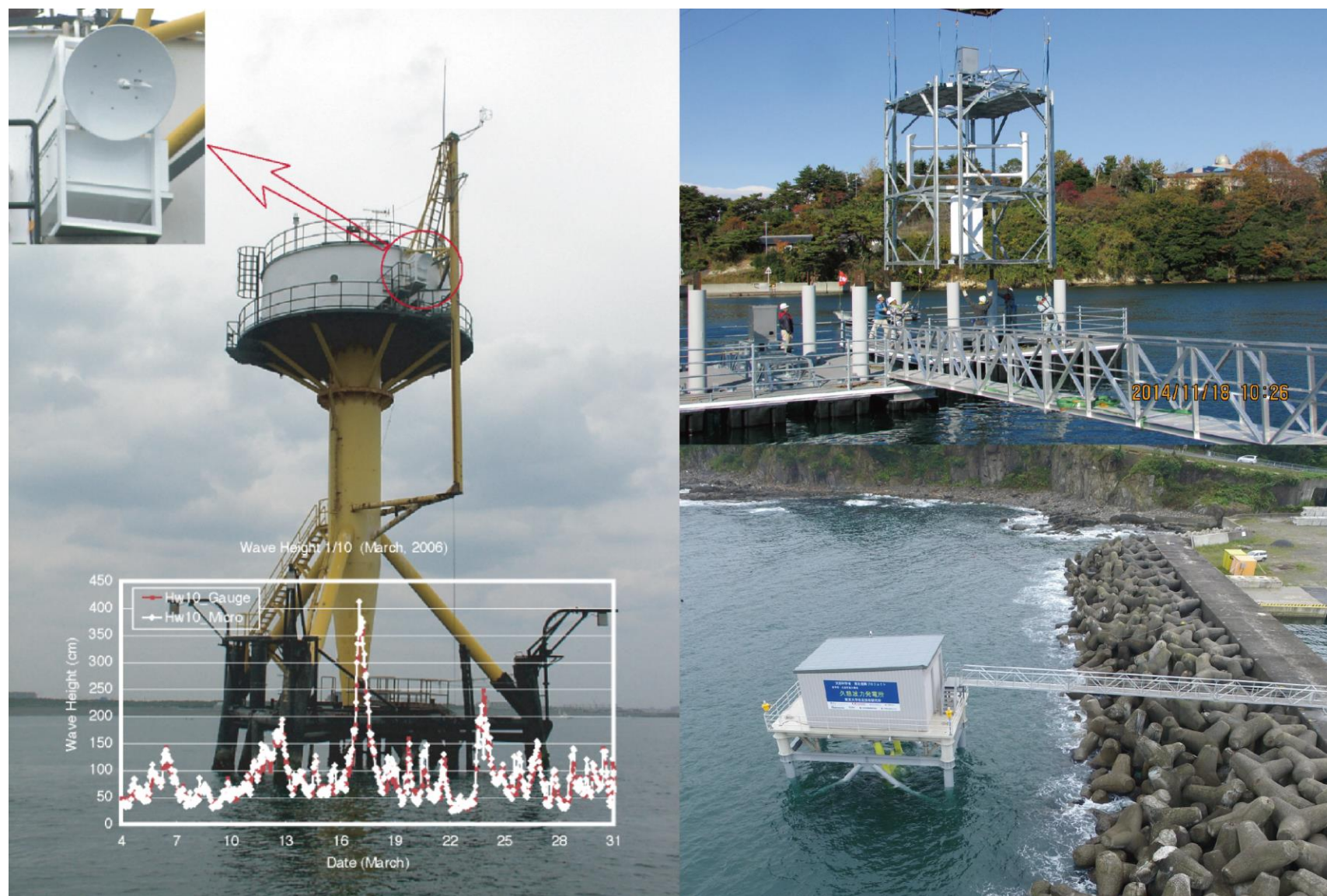
Graduate School of Engineering, Dept. of Systems Innovation

<http://seasat.iis.u-tokyo.ac.jp/>

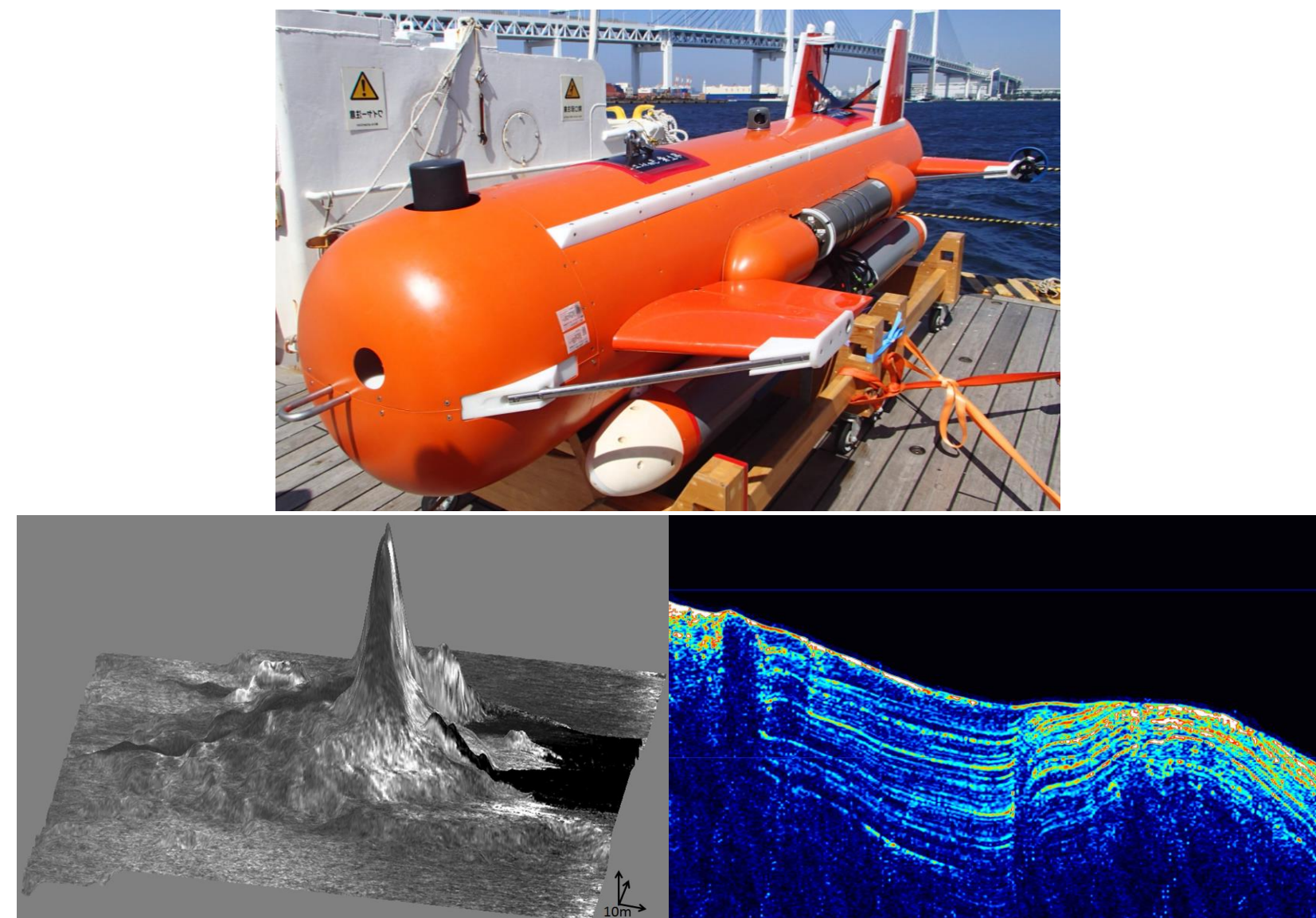
Evolution of Studies on Underwater Technology

Actual **B**enefit, **C**reation and **D**iscovery, **E**xploration of **F**uture

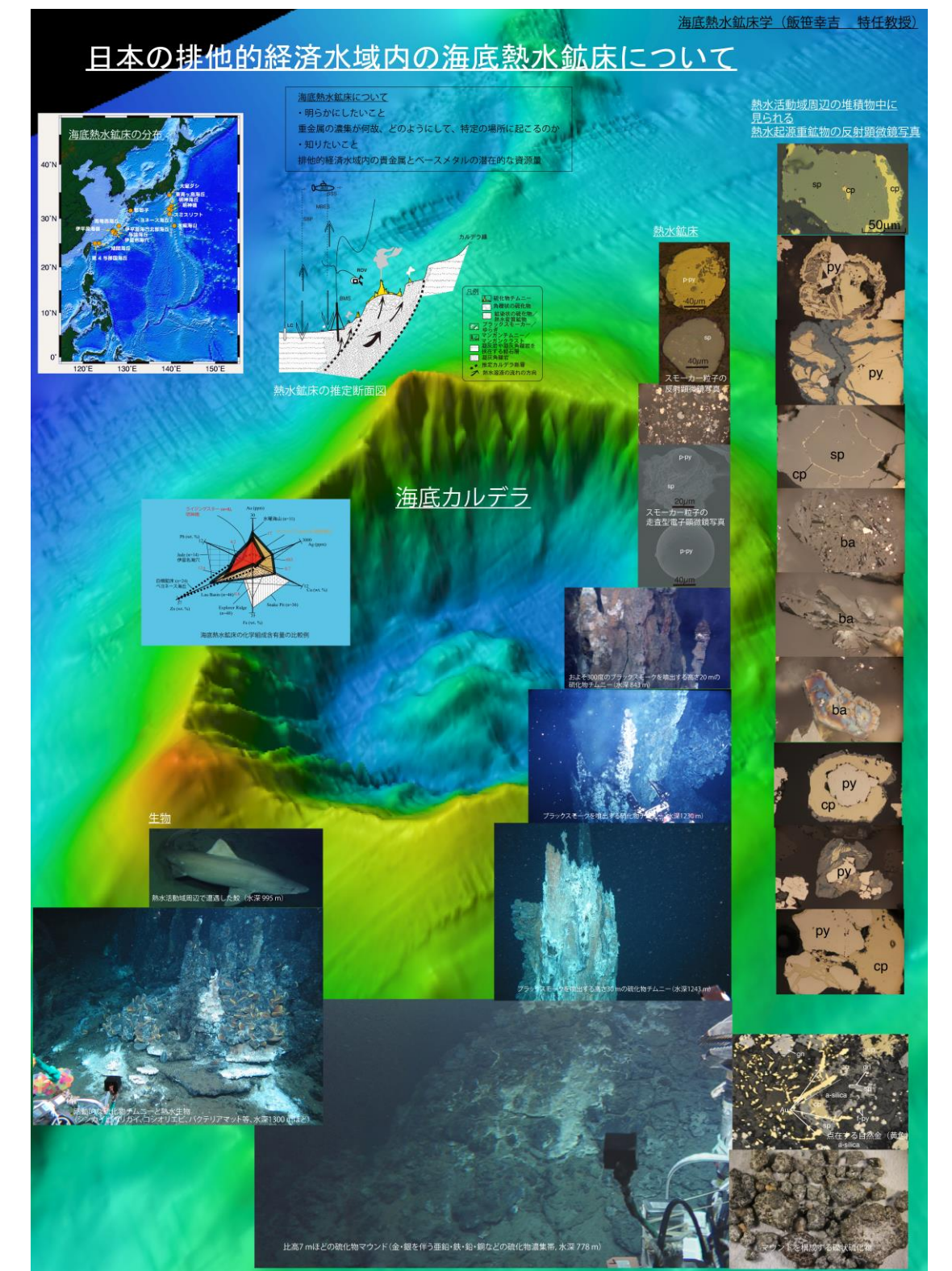
Rheem Lab.
Ocean Environmental
Engineering



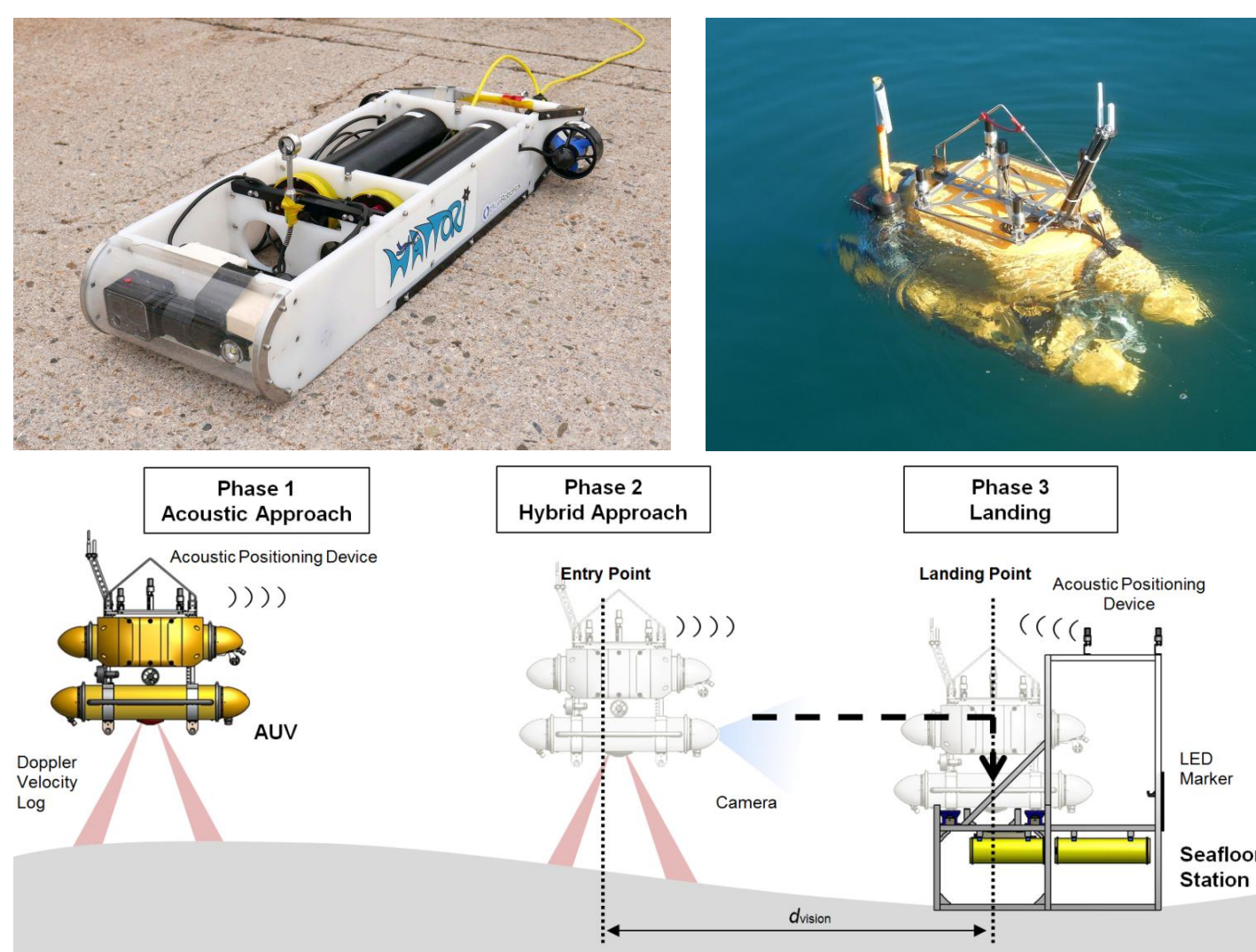
Asada Lab.
Underwater Acoustic
Systems Engineering



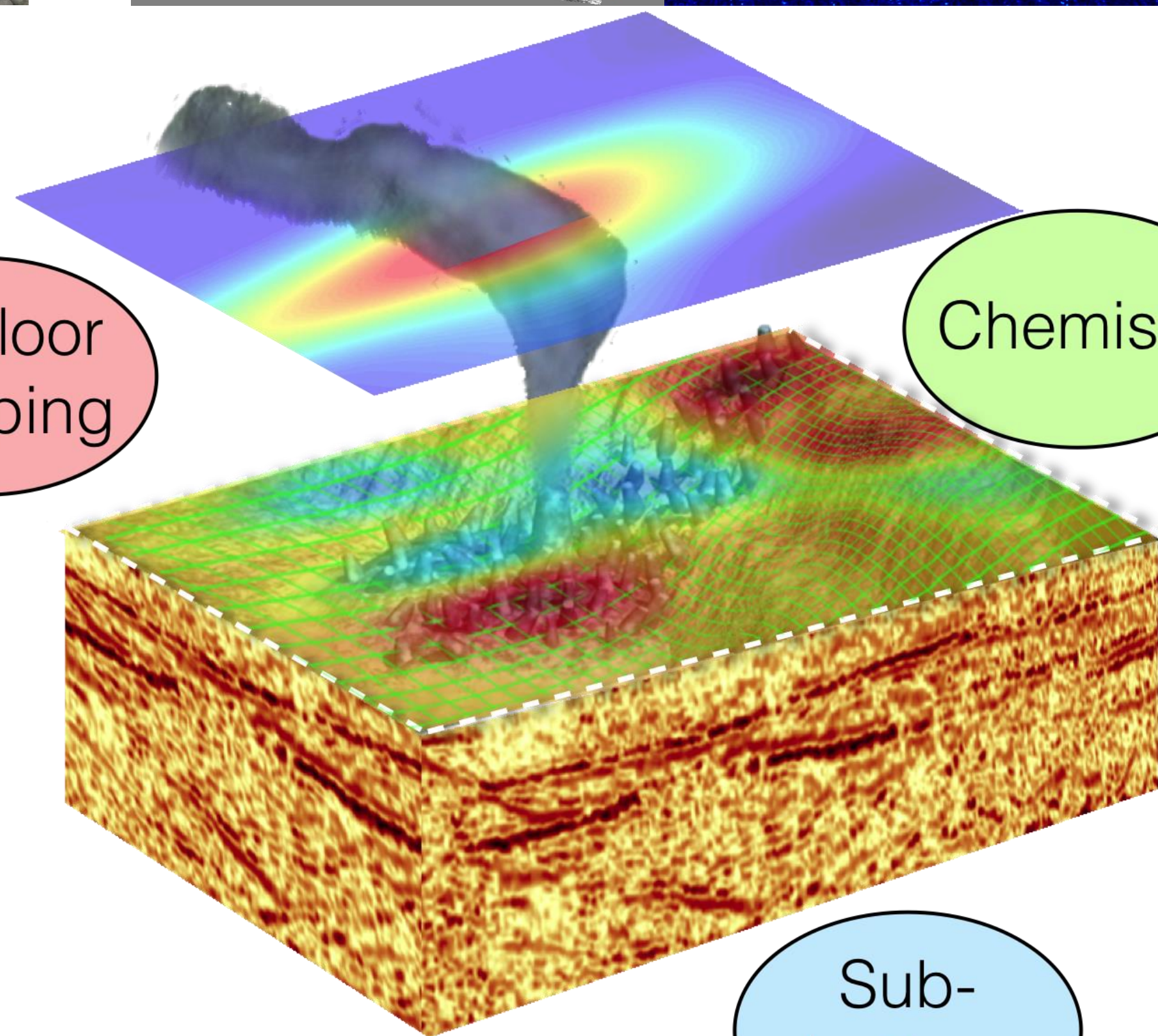
Iizasa Lab.
Seafloor Massive Sulfide
Geology



Maki Lab.
Underwater Platform Systems



Seafloor mapping



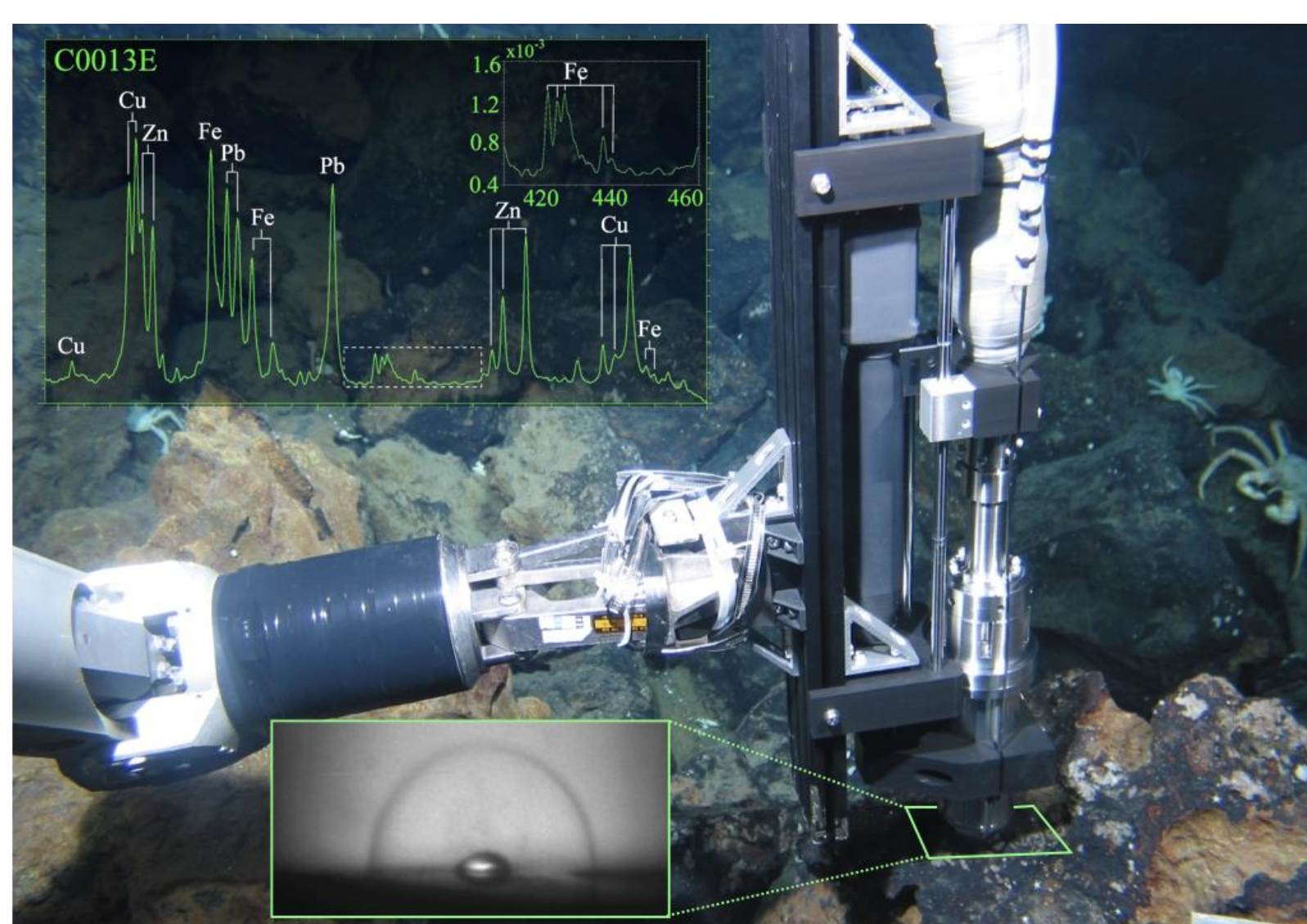
Chemistry

Sub-bottom

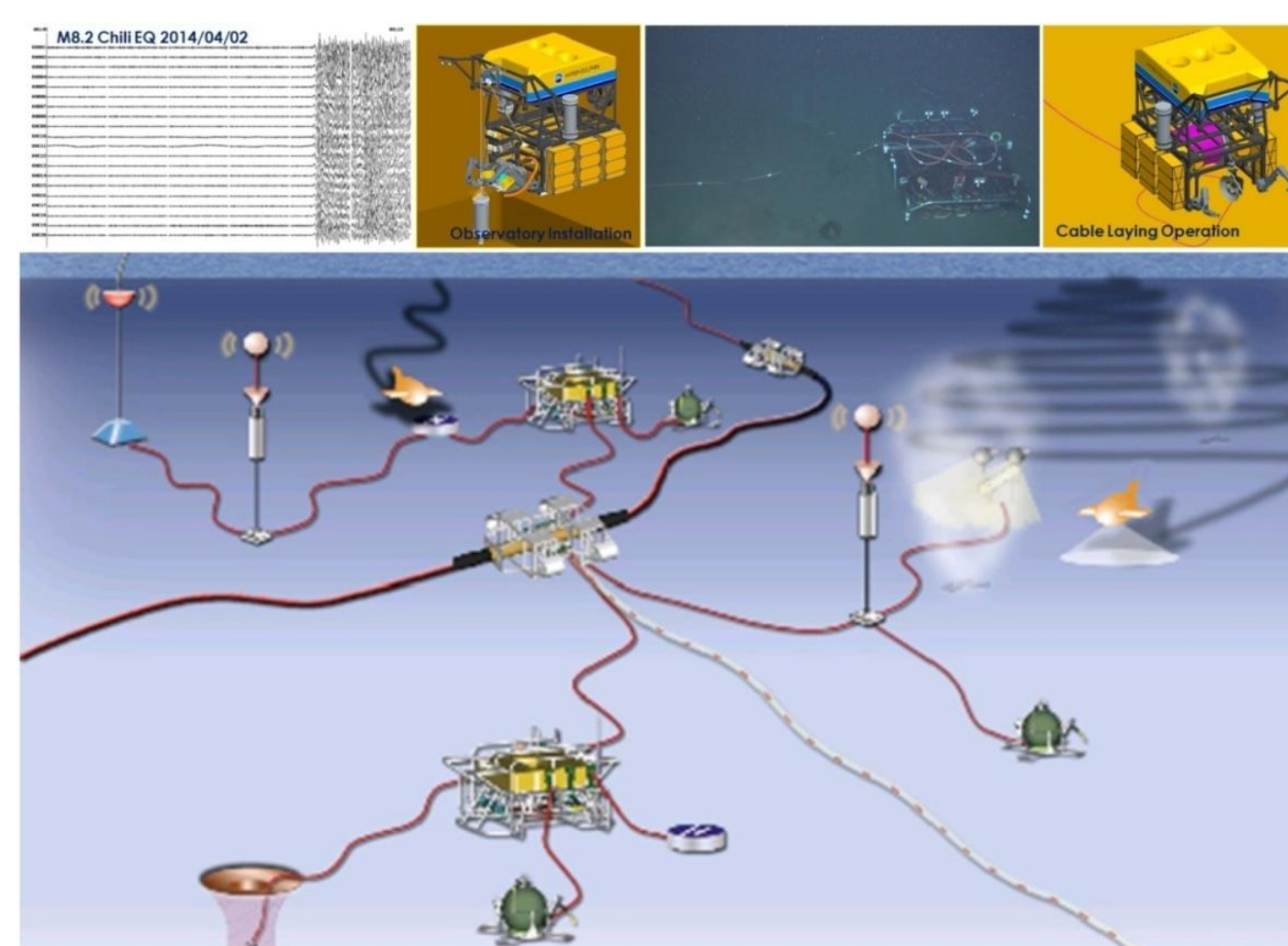
Kitazawa Lab.
Marine Ecosystem Engineering



Thornton Lab.
Underwater Photonics



Kawaguchi Lab.
Multidisciplinary Seafloor Observatory
Engineering



Nishida Lab.
Ocean Nanosensing

