

HAMBA LAB.

[Physics and Modeling of Turbulence]

Department of Fundamental Engineering

Fluid Physics

Department of Physics, School of Science

<http://www.iis.u-tokyo.ac.jp/~hamba/>

Turbulence Modeling

Turbulence can be widely seen in air and water flows in nature and in engineering field. Turbulent flows can be simulated by calculating the equation of fluid motion with computer. But it is difficult to simulate all eddies from the largest one to the smallest one. It is necessary to predict turbulent flows by simulating only large eddies of the mean velocity field. We then need to theoretically derive the equation for the mean velocity field. This is called the turbulence modeling.

The turbulent motion of small eddies is not solved; their effect on the large eddies is expressed as the enhanced viscosity due to turbulence. It is important to evaluate the turbulent viscosity and to obtain a closed system of equations for the mean velocity field and the turbulence quantities. In our group, using statistical theory and numerical simulation we clarify the mechanism of turbulence and model the turbulent viscosity to develop universal model equations of turbulence.

◆ Analysis of turbulent transport in channel flow

The mean shear near the wall is the important mechanism of the turbulence generation. The effect of mean shear on the turbulent transport is studied theoretically and numerically.

◆ Analysis of turbulent thermal convection in rotating system

Thermal convection is driven in a flow between two plates heated from below. The effect of system rotation on the turbulent thermal convection is studied using numerical simulation.

◆ Modeling the magnetohydrodynamic turbulence and magnetic reconnection

Solar flares are driven by the reconnection of magnetic flux tubes. The magnetic reconnection is simulated and analyzed from the viewpoint of magnetohydrodynamic turbulence modeling.

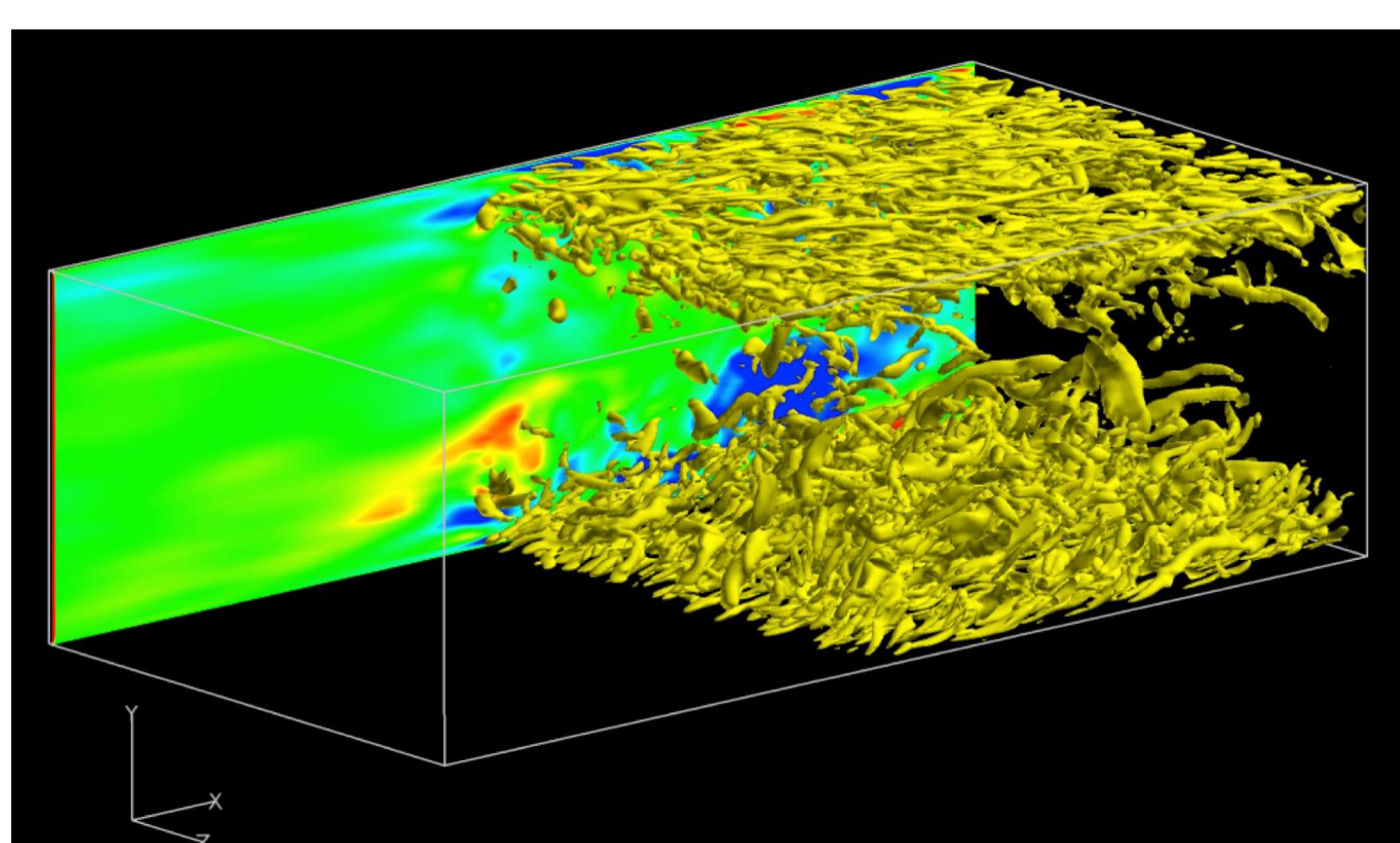


Fig.1 Vortices near the walls in turbulent channel flow

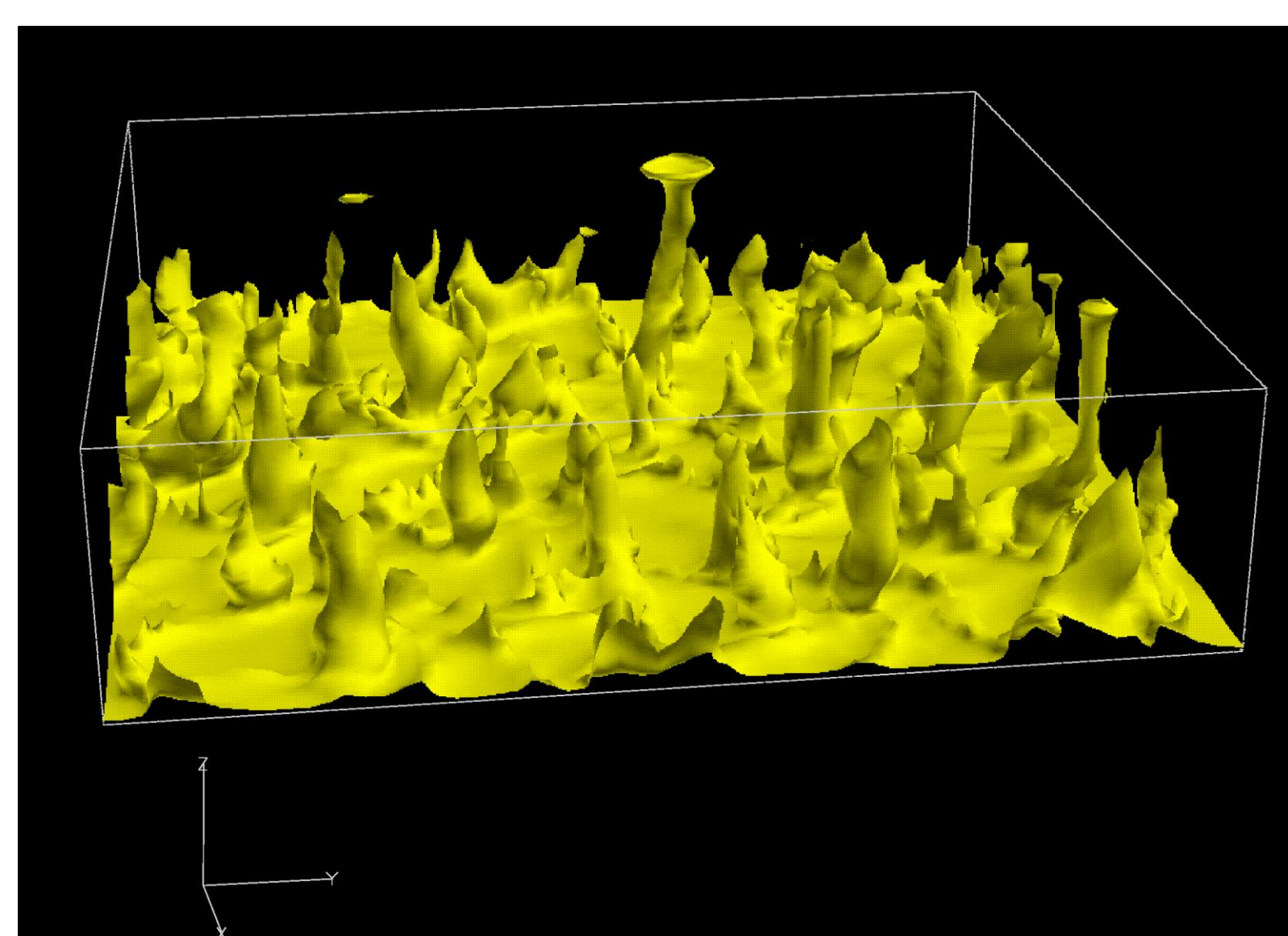


Fig.2 Rising plumes in turbulent thermal convection in rotating system

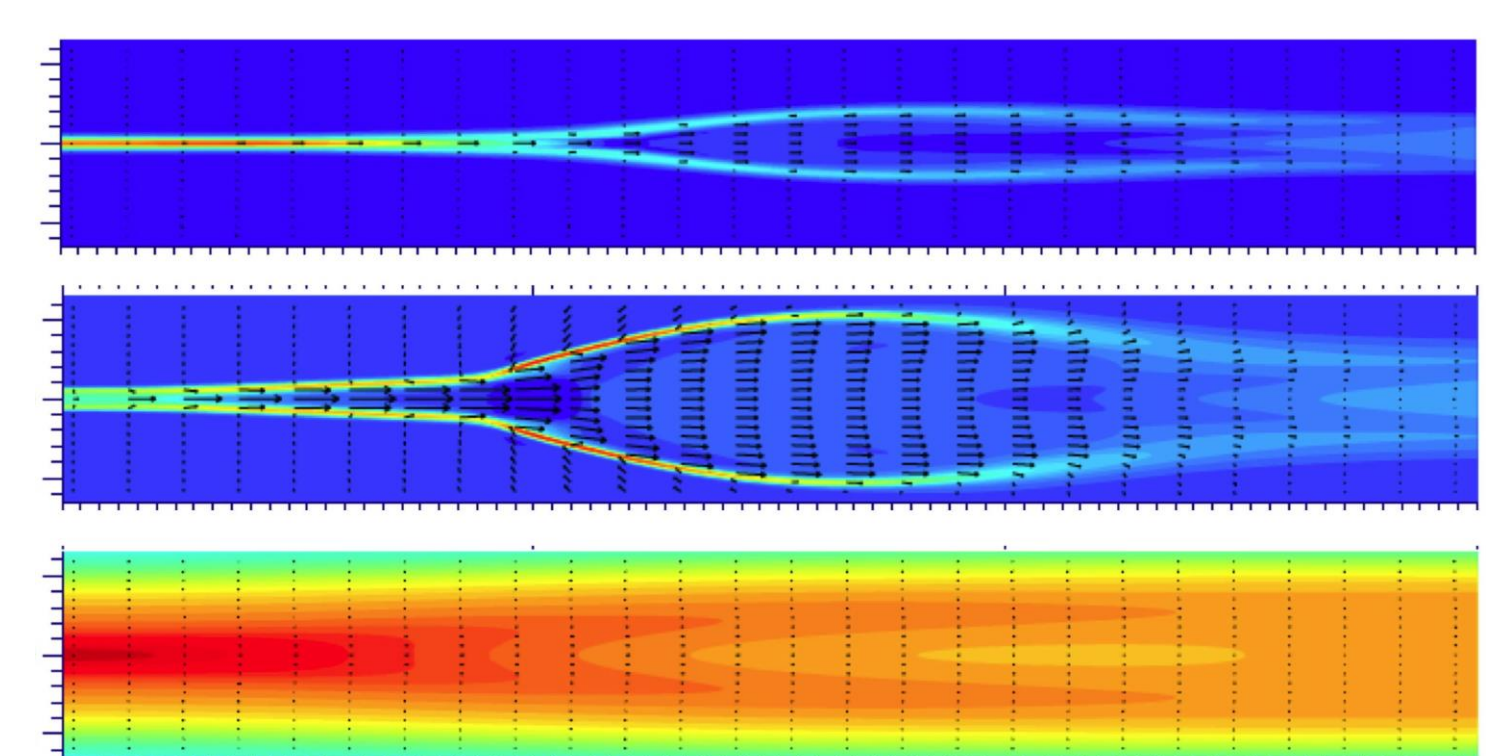


Fig.3 Current and jet of magnetic reconnection