

# YASHIRO LAB.

## [Building and Internet of Things -Potentials and Challenges]

Institute of Industrial Science  
Department of Human and Social Systems

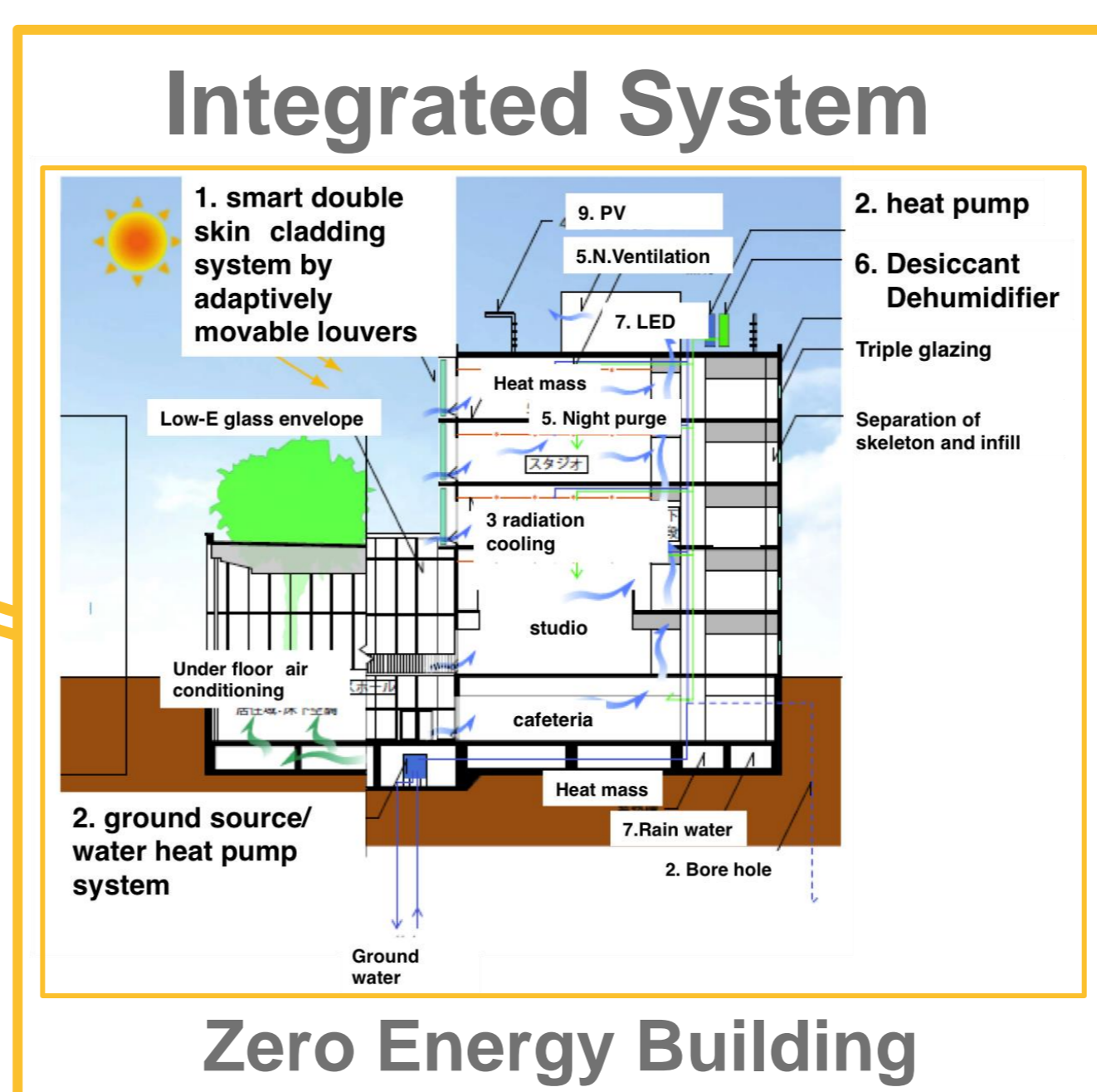
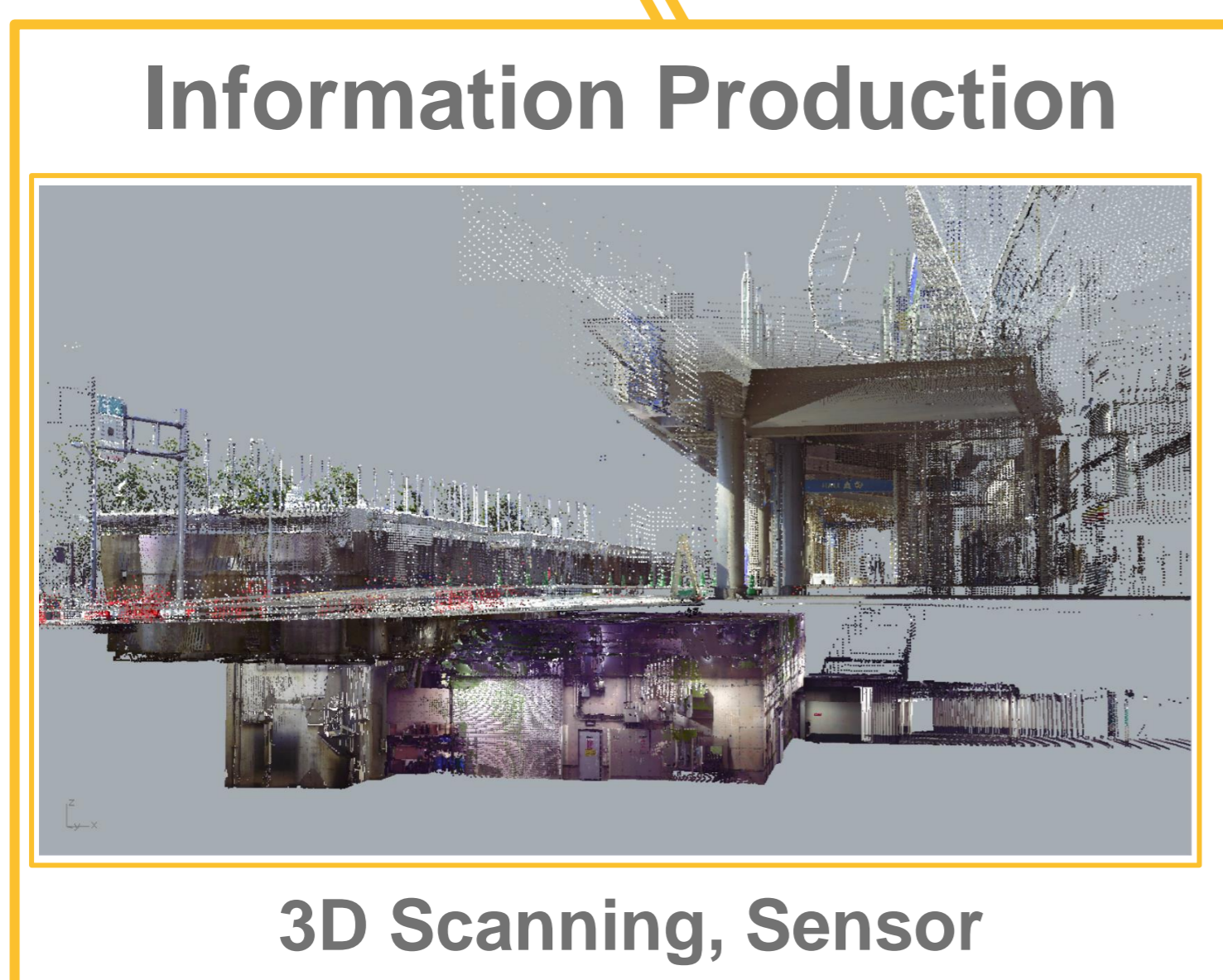
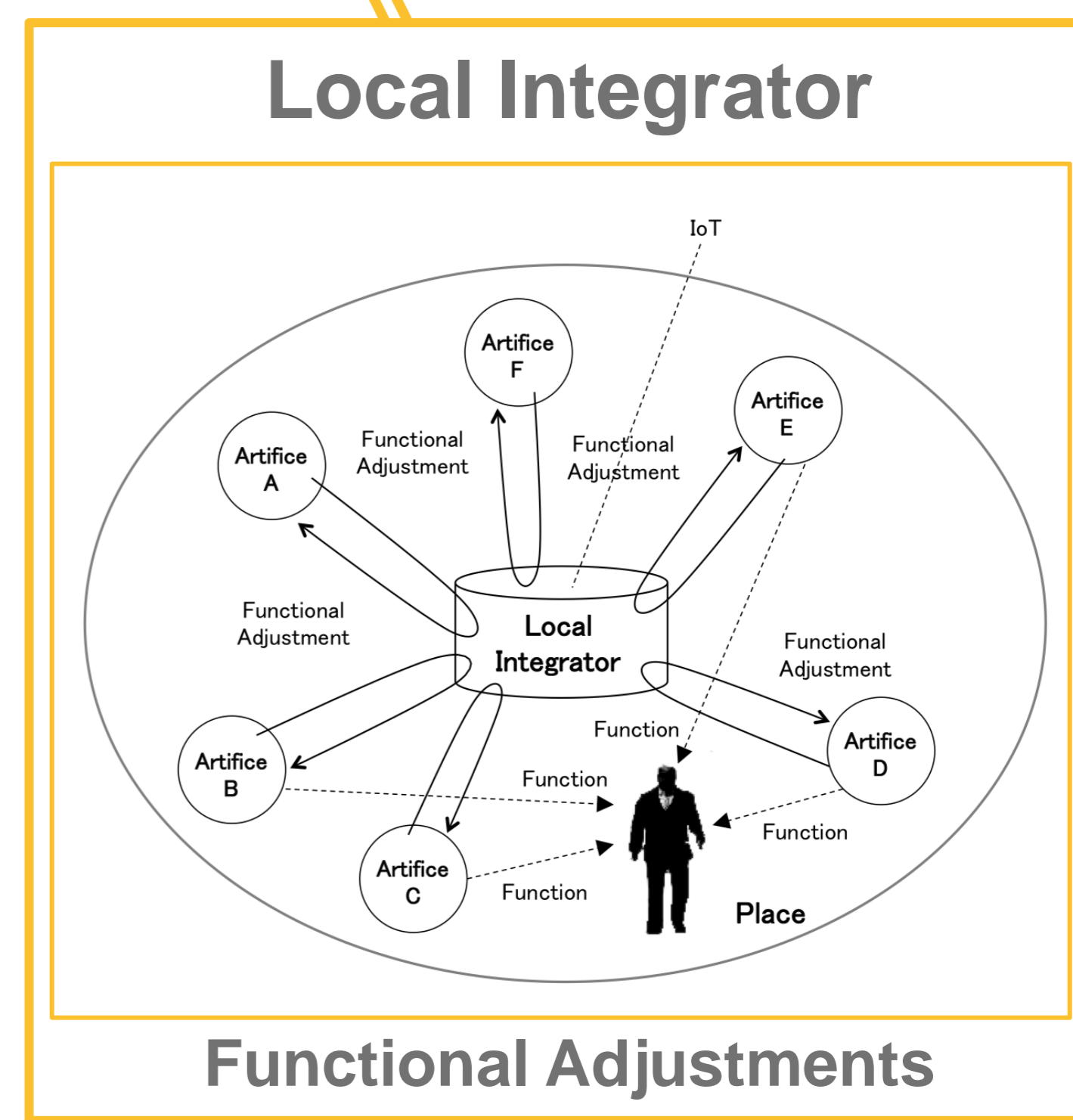
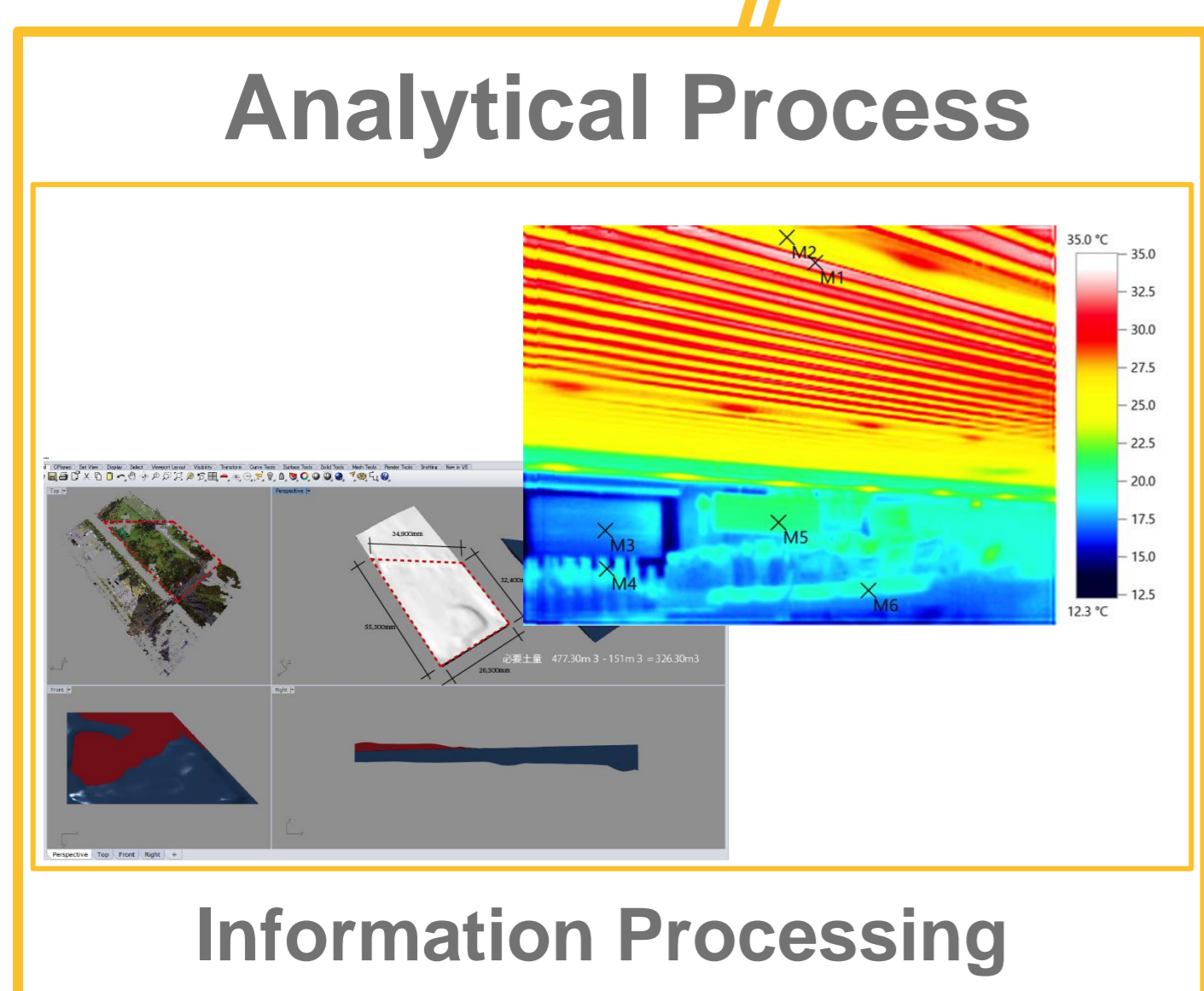
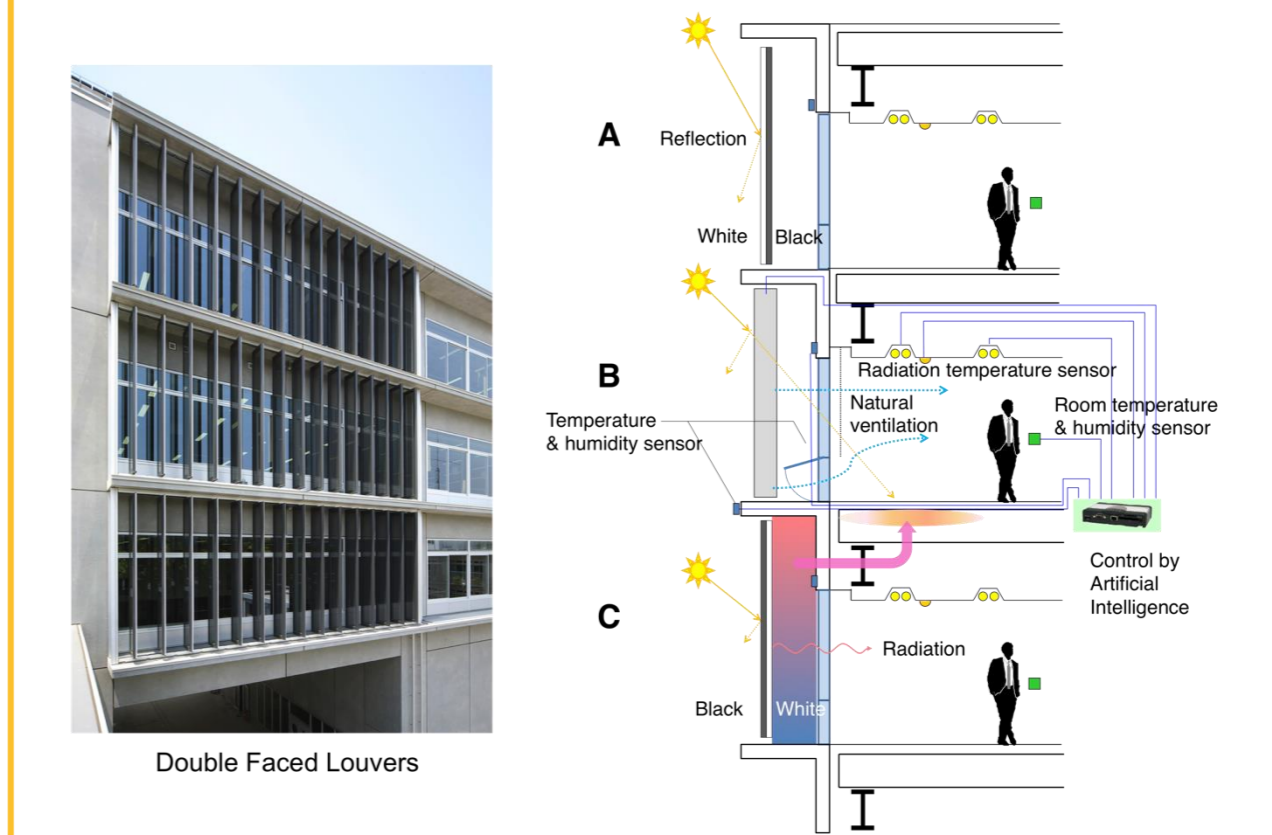
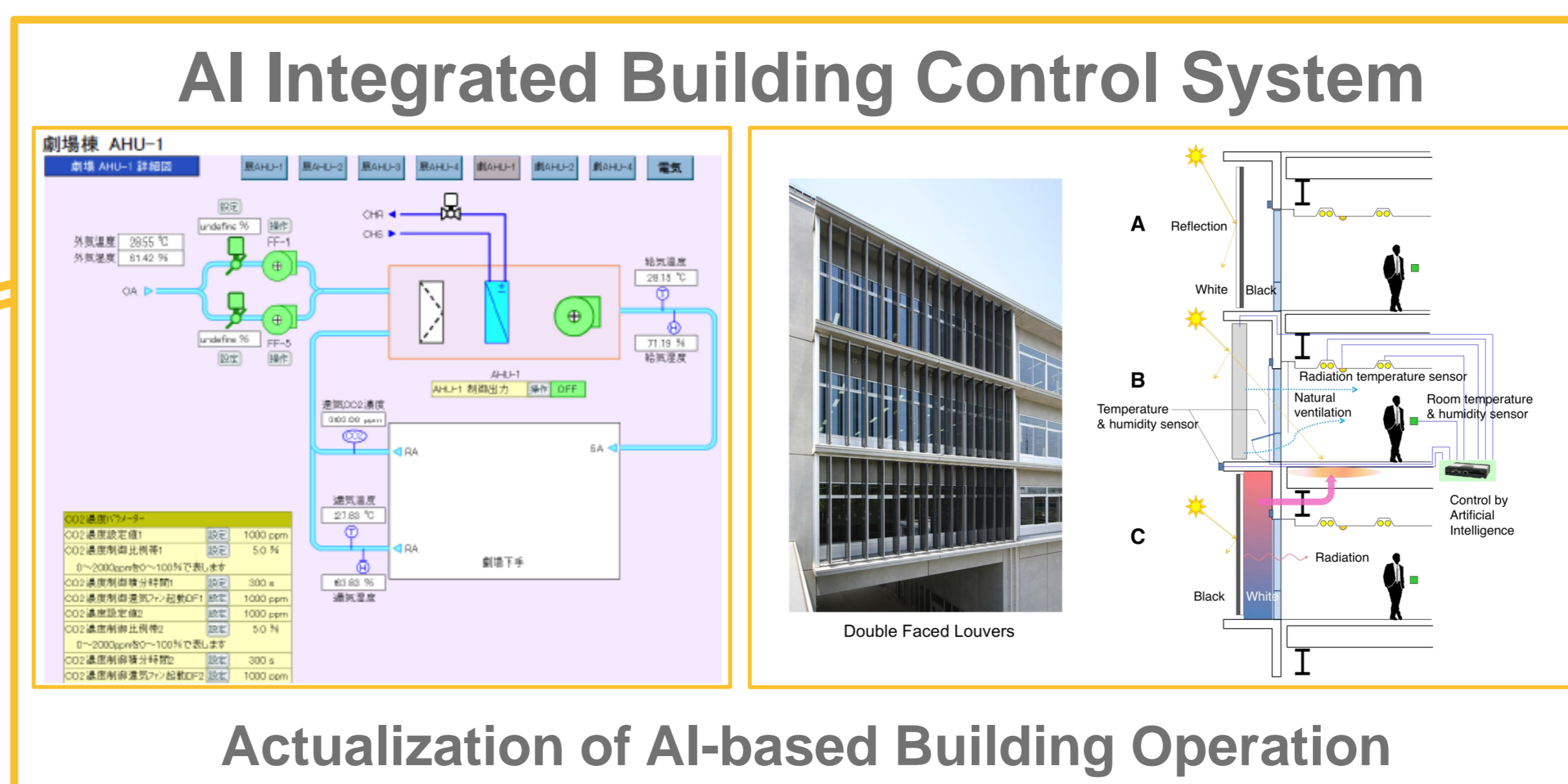
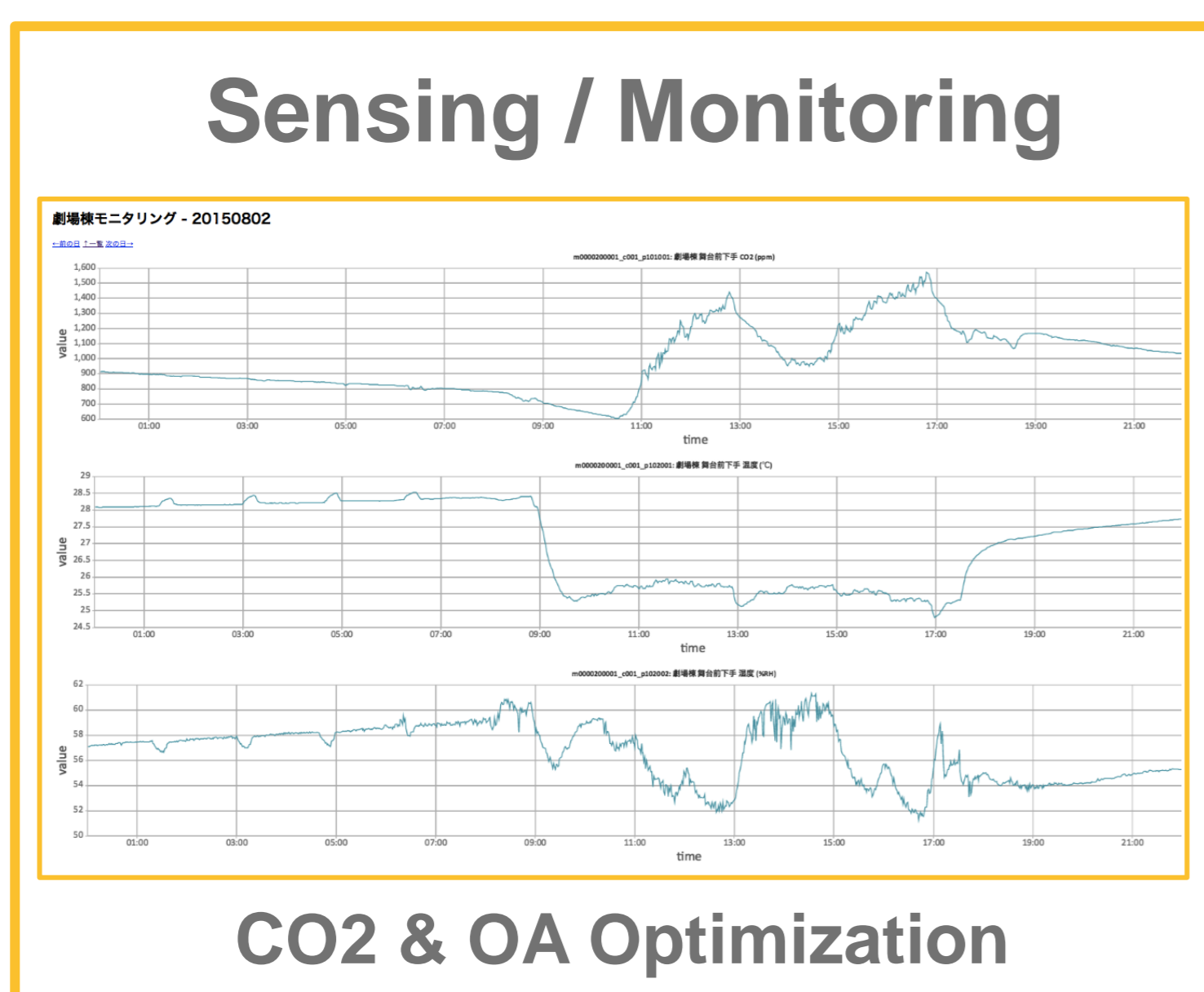
<http://yashirolab.iis.u-tokyo.ac.jp/>

Management of Project

Engineering/Architecture  
Technology Management for Innovation

# Building and Internet of Things

## Potentials and Challenges



### User Interface

Summer		Winter	
Temp.	Expected Maximum Temp.	Temp.	Expected Maximum Temp.
29.8°C	29.8°C	11.5°C	12.3°C
<b>Tomonari Yashiro Lab</b>		<b>Tomonari Yashiro Lab</b>	
Now :	6.0 kW	Now :	4.0 kW
Target of Peak Demand :	5.9 kW	Target of Peak Demand :	5.9 kW
<b>-Komaba Research Campus-</b>		<b>-Komaba Research Campus-</b>	
Now :	4,000.0 kW	Now :	3,080.0 kW
Target of Peak Demand :	4,900.0 kW	Target of Peak Demand :	4,900.0 kW

Energy Visualization