



W. Takeuchi lab

[Monitoring global environment changes and international technology collaboration]

Department of human and social systems

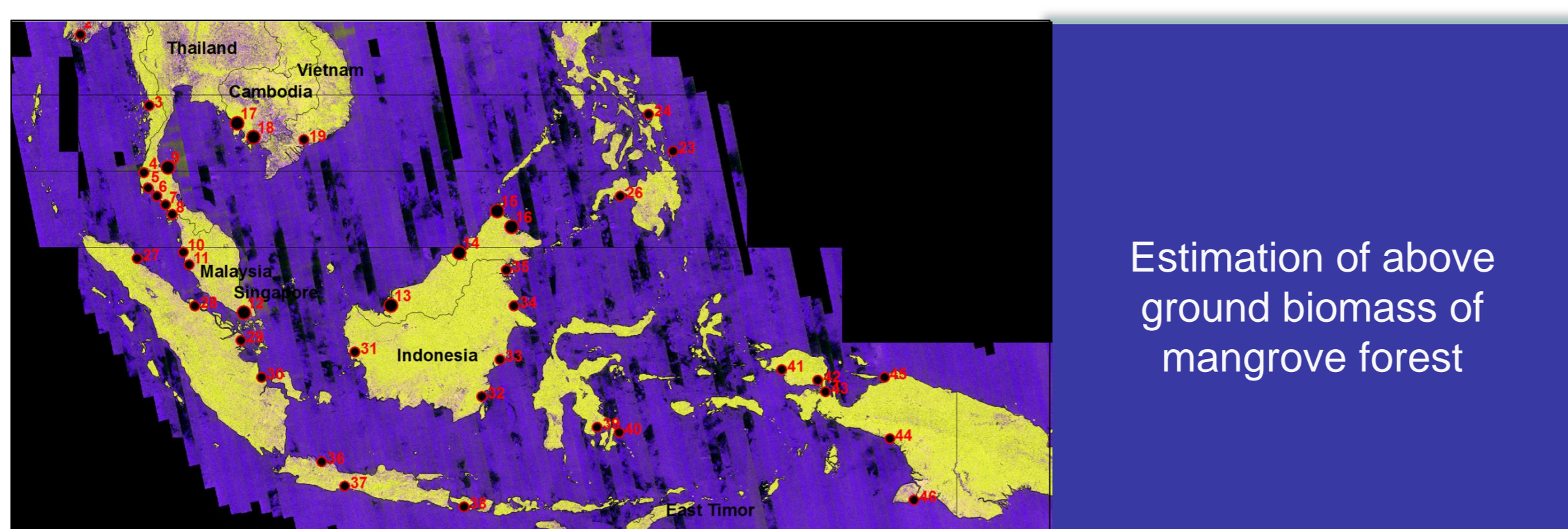
<http://wtlab.iis.u-tokyo.ac.jp/>

Remote sensing of environment and disaster

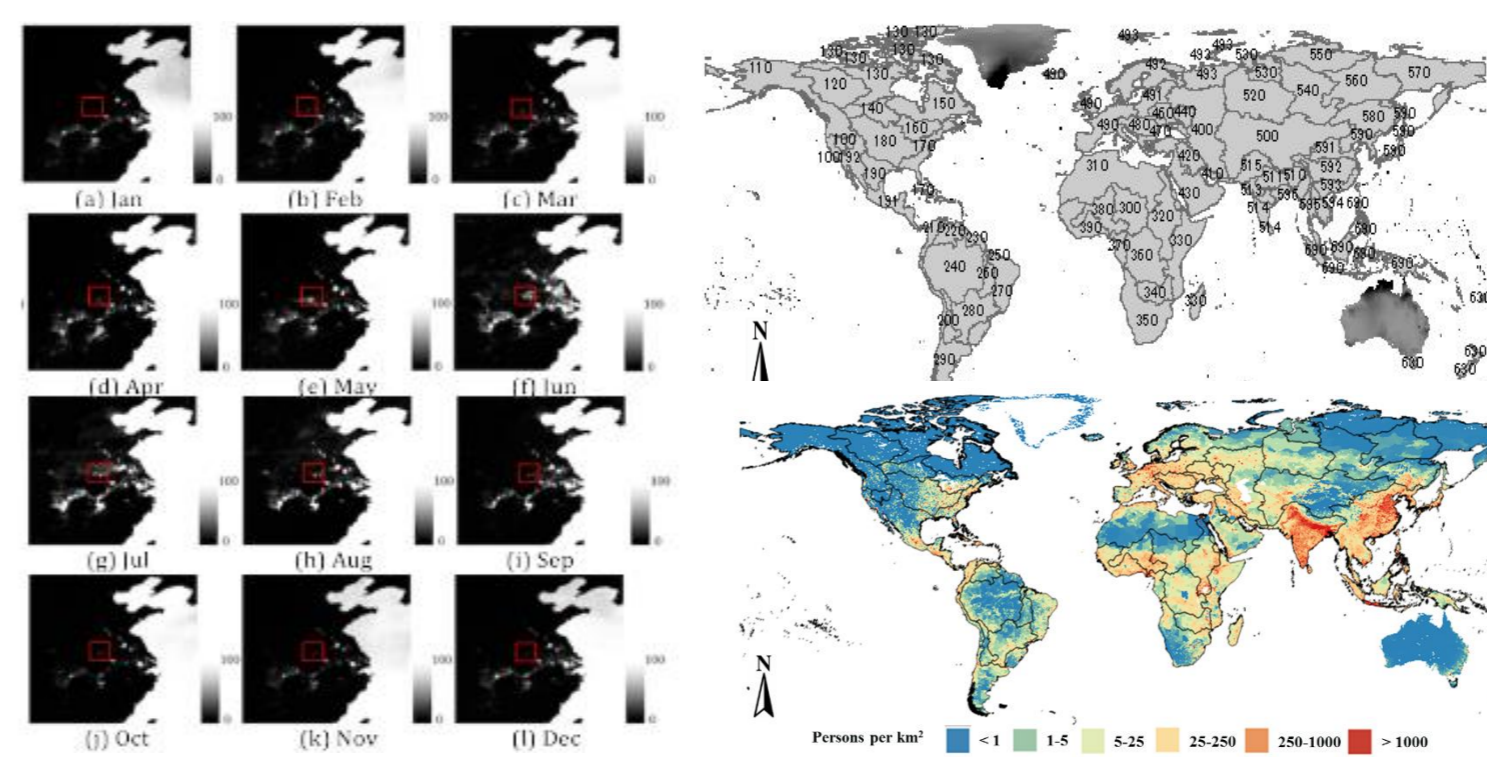
Department of civil engineering, faculty of engineering

Monitoring global environment changes and international technology collaboration

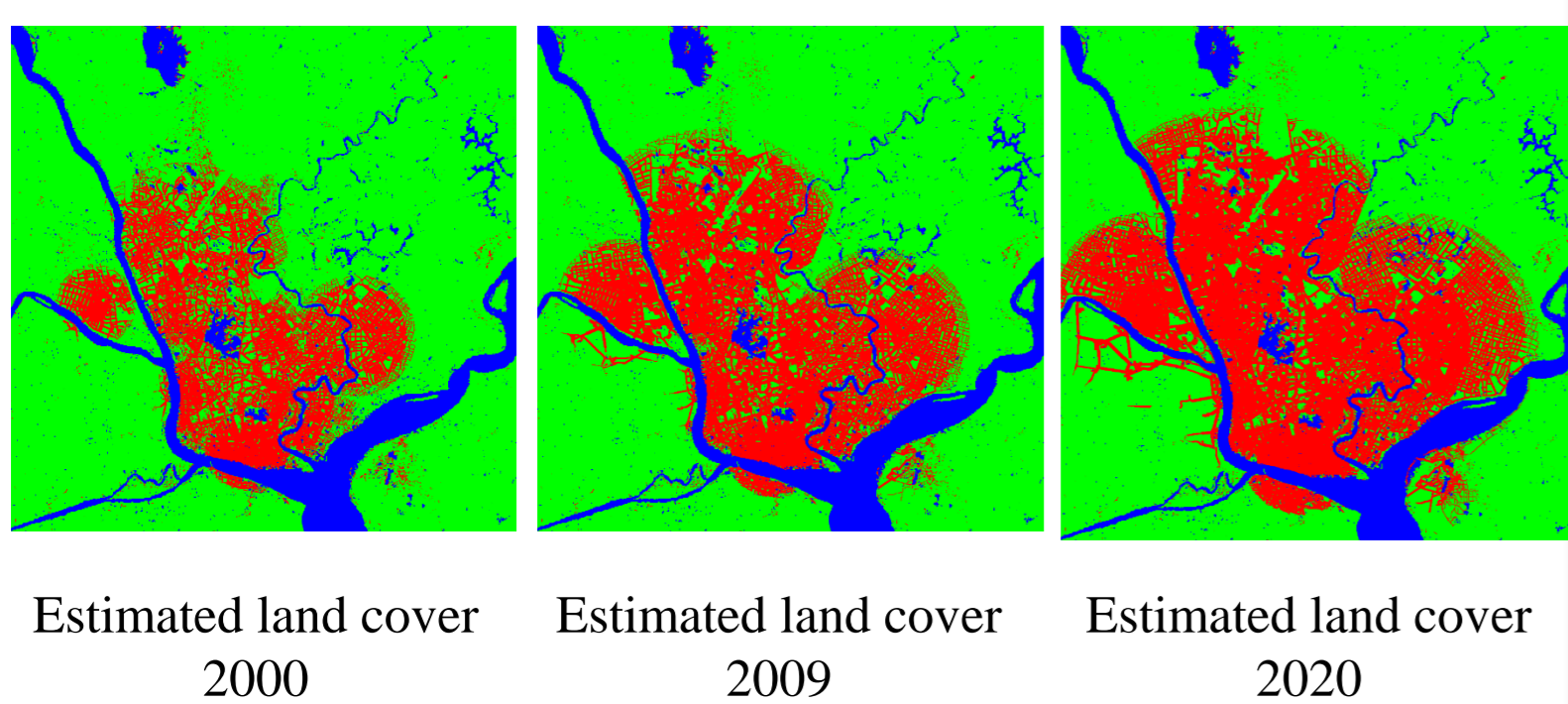
Our lab's mission is to develop the methodology to measure and evaluate the environmental changes of city, agricultural area and forested area focused on human activities in global scale. Those researches are carried out under international technology collaboration and the derived systems are implemented and transferred to operational schemes into mainly Asian countries including Vietnam, Thailand, Cambodia, Myanmar, Lao PDR, Malaysia, Indonesia India and Sri Lanka through Asia Pacific Region Space Forum (APRSAF), Asian Development Bank (ADB) and Japan International Cooperation Agency (JICA).



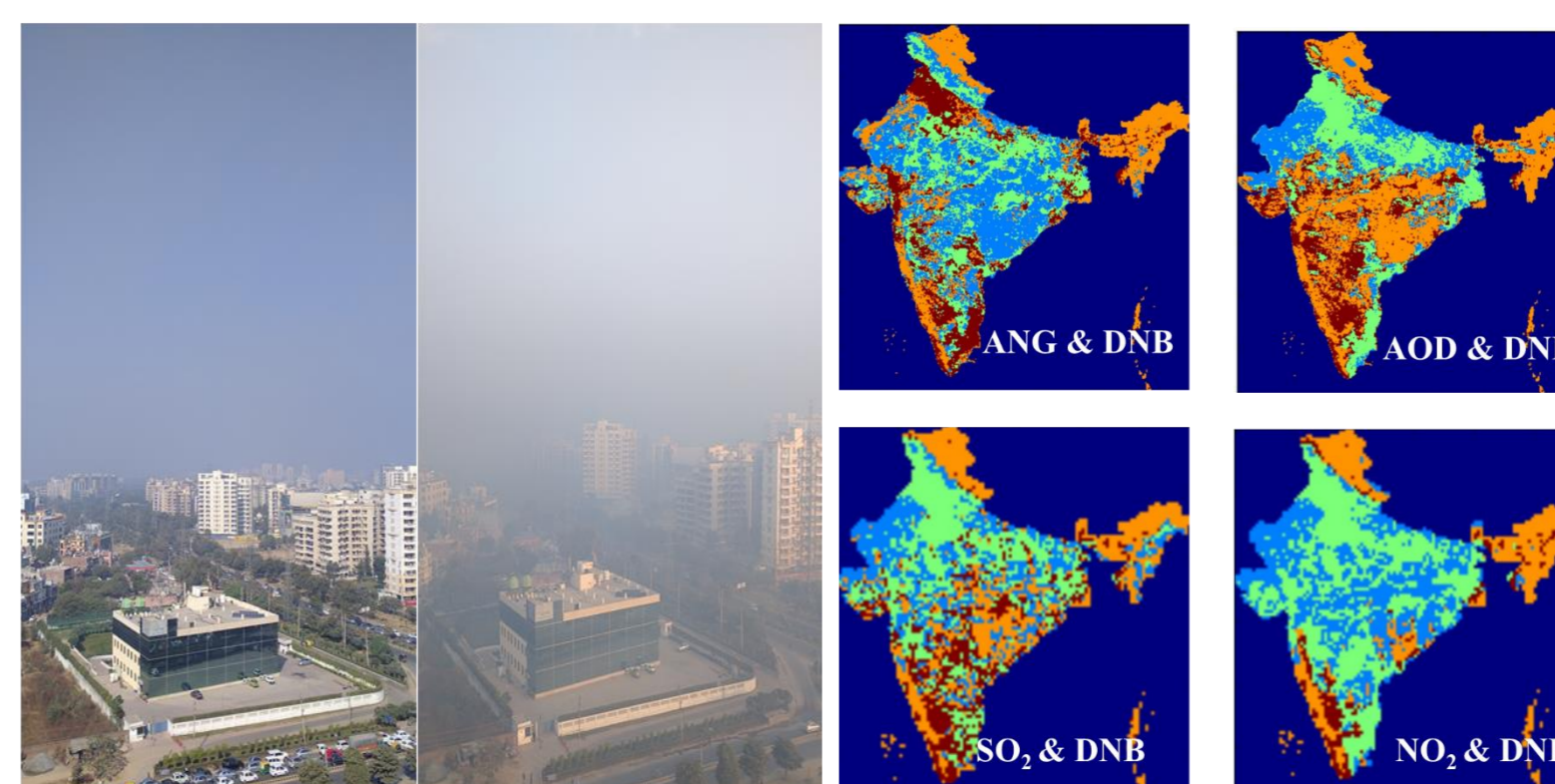
Estimation of above ground biomass of mangrove forest



Flood detection and other analysis from microwave data fusion technique in global scale



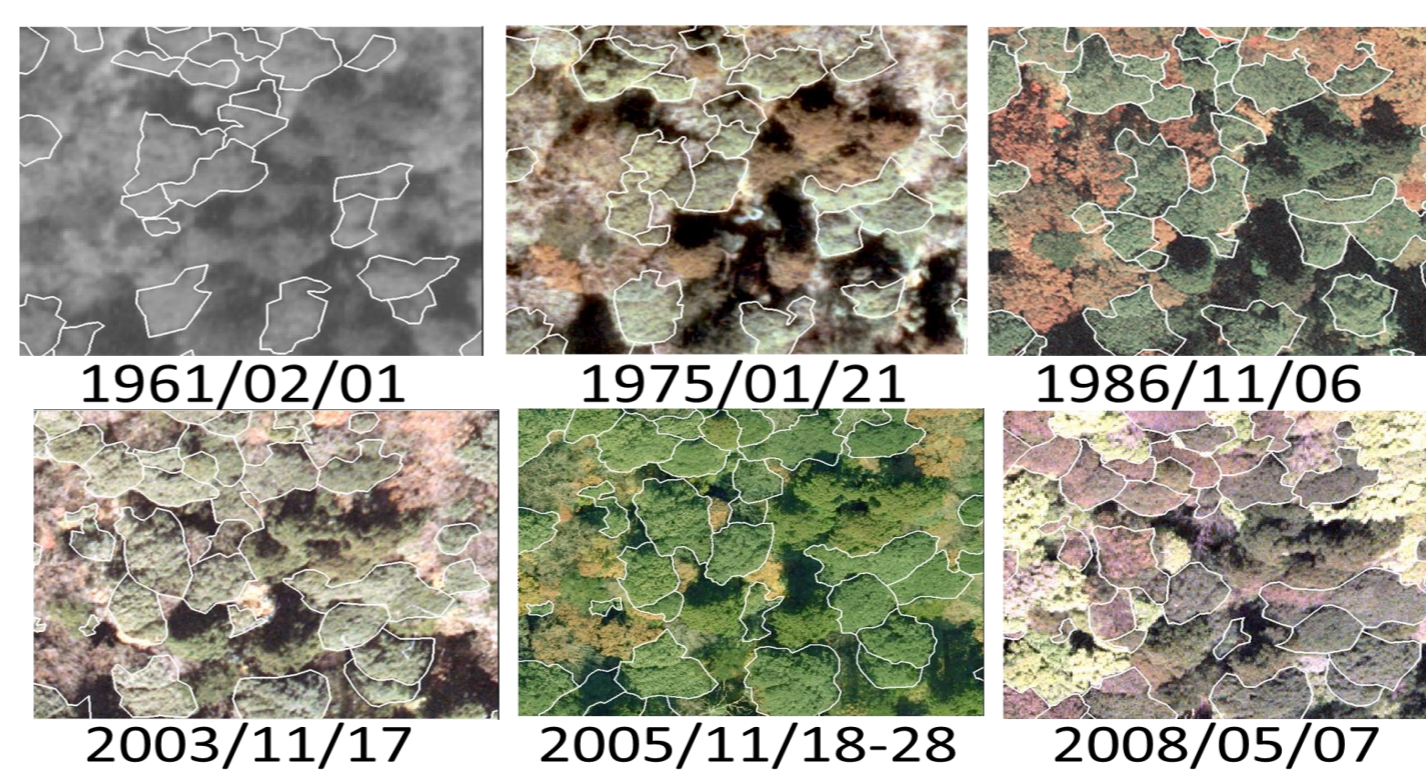
Modeling of urban expansion



Air quality monitoring and modeling



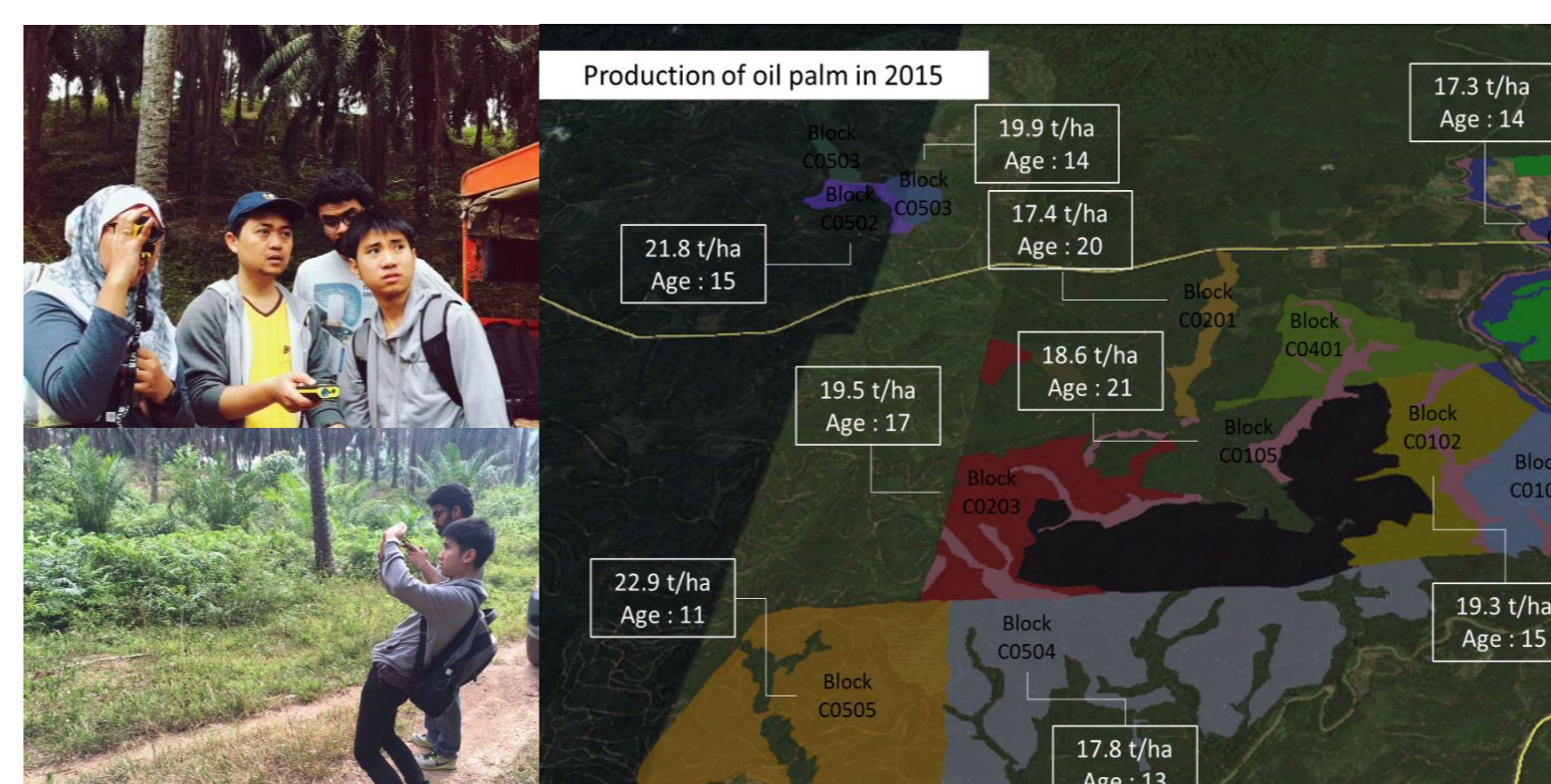
Carbon emission from tropical peat land fires



Change detection of distribution evergreen broad-leaved tree



Land subsidence measurement with InSAR in tropical peat land



Monitoring of oil palm plantation