

YASHIRO LAB.

Information Systems for a Sustainable Built Environment

Department of Human and Social Systems

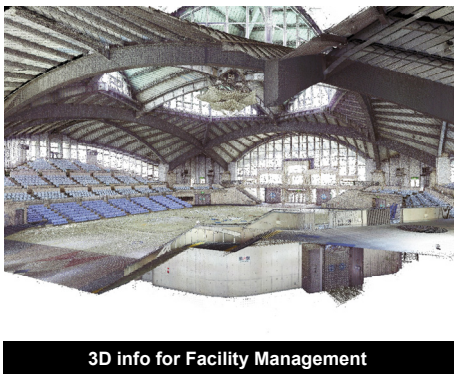
<http://yashirolab.iis.u-tokyo.ac.jp/>

Engineering/Architecture
Interdisciplinary Information Studies
Technology Management for Innovation

Management of Project

Information Systems for a Sustainable Built Environment

Measuring, aggregating, and analyzing the functioning of buildings is the first step toward the sustainable operation and utilization of buildings. We will introduce information systems that are under development and trial according to these aims.



3D info for Facility Management



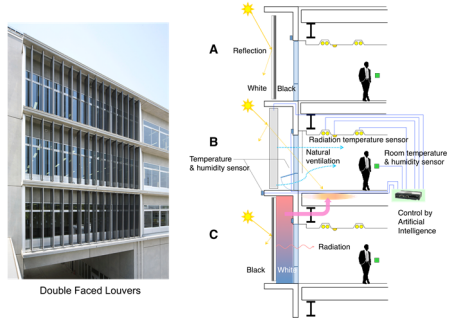
Testing Constructability



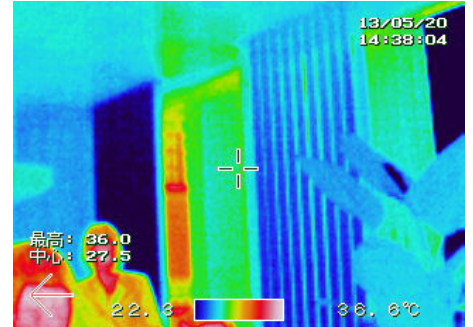
Information for Multi-stakeholder Communication



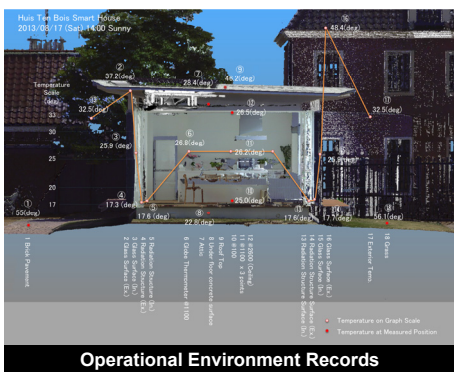
Energy Demand Management



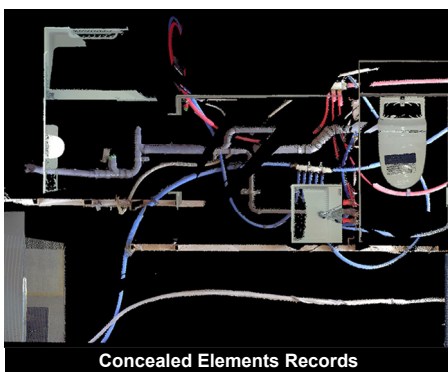
Genetic Algorithm & Operational Optimization



Performance Verification in Operational Phase



Operational Environment Records



Concealed Elements Records



Construction Process Records