



W. Takeuchi lab

[Monitoring global environment changes and international technology collaboration]

Department of human and social systems

<http://wtlab.iis.u-tokyo.ac.jp/>

Remote sensing of environment and disaster

Department of civil engineering, faculty of engineering

Monitoring global environment changes and international technology collaboration

Our lab's mission is to develop the methodology to measure and evaluate the environmental changes of city, agricultural area and forested area focused on human activities in Asian countries. Those researches are carried out under international technology collaboration and the derived systems are implemented and transferred to operational schemes in ASEAN countries including Vietnam, Laos, Indonesia and Myanmar through APRSAF and JICA.

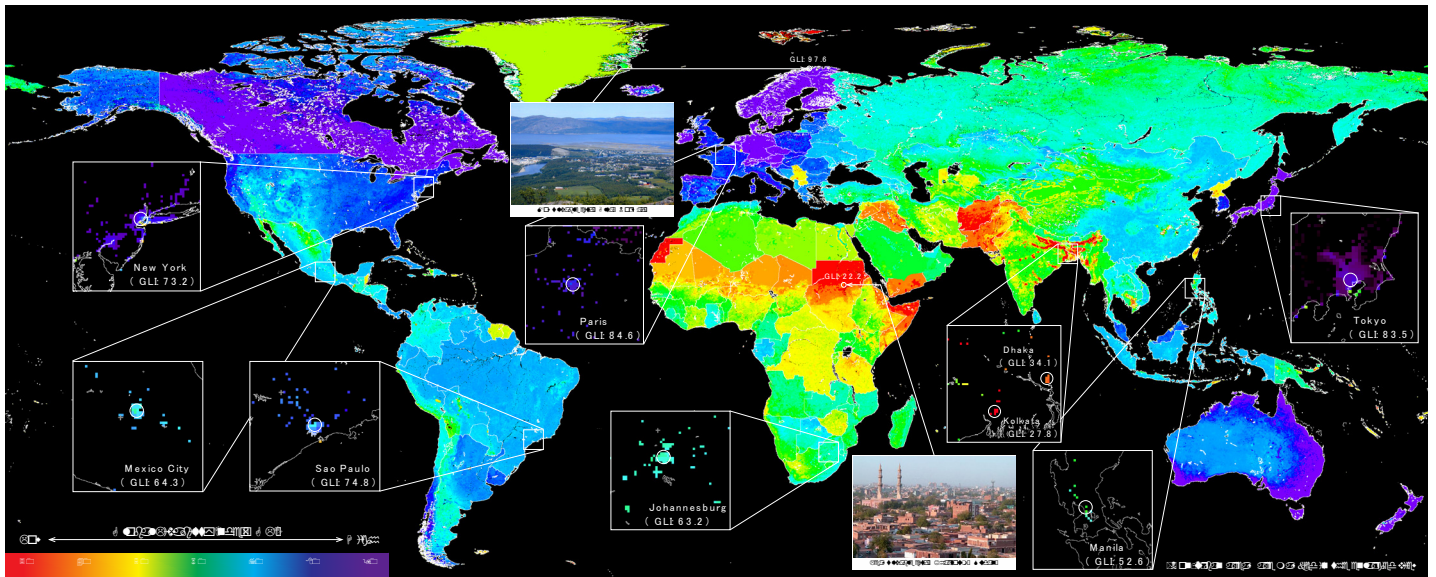


Fig.1 Livability map of global urban areas created by the combination of remote sensing data, statistical data, and questionnaire survey

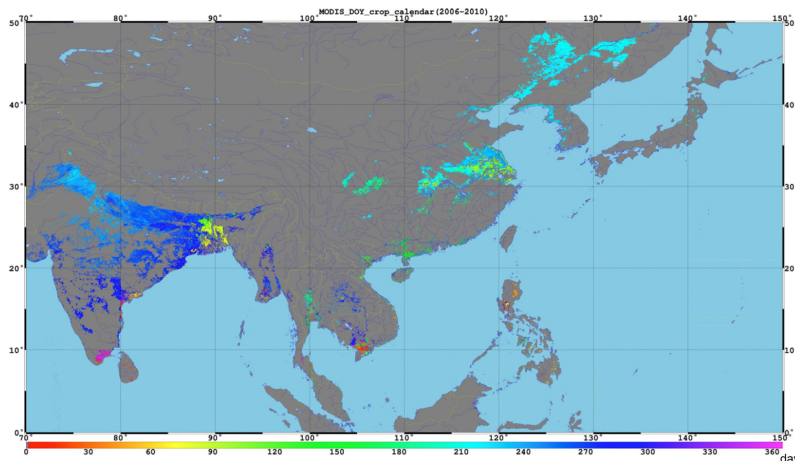


Fig.2 Cropping calendar of rice paddy field in Asia



Fig.3 Field survey of mangrove and paddy field in Sri Lanka