



TOSHIYOSHI LAB.



[Optical MEMS & RF-MEMS]

Center for International Research on Micronano Mechatronics

<http://toshi.iis.u-tokyo.ac.jp/toshilab/>

Micromachine System Engineering (IIS), Micro Device Engineering (RCAST)

Dept. Electrical Engineering and Information Systems (EEIS), School of Engineering
 Also with Dept. Department of Advanced Interdisciplinary Studies (AIS), School of Engineering

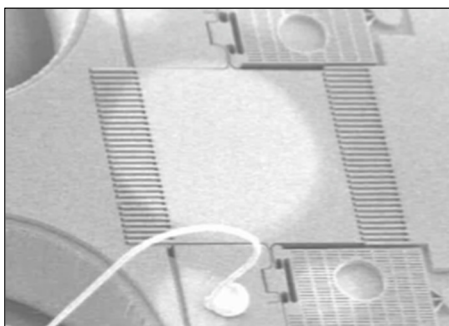
Industrial Application of MEMS

[Read the QR-codes to see movies](#)

Practical Applications of MEMS

Mechanical motion is the essence of MEMS, which cannot be performed by the conventional semiconductor devices. We use the mechanical motion of MEMS actuators to develop fiber telecom devices, image displays, fiber endoscopes, and terahertz filters.

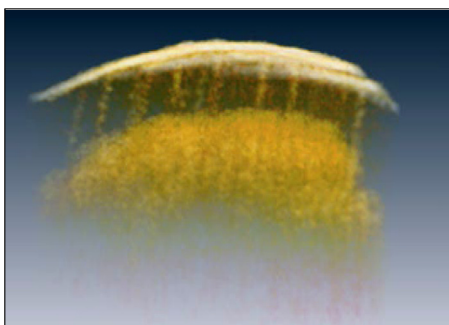
MEMS Actuators for Fiber Telecom



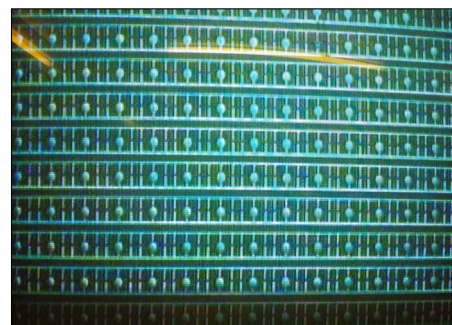
Interactive MEMS Image Display



MEMS Optical Coherence Tomography 1



MEMS Terahertz Tunable Filter



MEMS Optical Coherence Tomography 2



MEMS Shutter Array for Observatory

